

HDD sd card mdvr with 4ch camera with gps 3g wifi optional



| Item | Parameter |
|-------------------|---|
| OS | Linux |
| Language | English/Chinese/Customized |
| Video Compression | H.264 Compression |
| OSD | Overlays information such as date time and vehicle ID |
| GUI | Graphical User Interface Setup system parameters with the remote control. |

| | | |
|-----------------------|--|--|
| Video Record System | Video Input | 4CH 720P AHD input/SD input/ mixed input,aviation connector, 1.0Vp-p, 75Ω |
| | Video Output | 2CH CVBS+ VGA output for optional, 1.0Vp-p, 75Ω,Aviation,Support 1CH Full Screen, 4CH Screen view |
| | Preview | Support 1 channel and 4 channels preview., Support Manual/Alarm Trigger full screen preview |
| | Resolution | 720P/D1/HD1/CIF, MAX:4 channels 720P and 4 channels D1 |
| | Image Quality | 0-7 levels, 0 is the highest level. |
| | Video Standard | PAL: 100f/s , CCIR625 line,50field; NTSC: 120f/s, CCIR525 line,60field; CIF: 256Kbps ~ 1.5Mbps, 8 level video quality optional; HD1: 600Kbps ~ 2.5Mbps, 8 level video quality optional; D1: 800Kbps ~ 3Mbps, 8 level video quality optional; 720P: 4Mbps-6Mbps, multi level video quality optional |
| | Record Mode | The default setting is auto recording after power on. Timed recording, alarm trigger recording and manual recording are supported. |
| Audio | Audio Input | 4CH Aviation Plug Input |
| | Audio Output | 2CH,headphone connect at front panel, BNC Connect on Back panel |
| | Compression | G.726 compression, 8KB/s speed |
| Alarm Input | 7CH Alarm Input,1CH AD Input, impulse speed input,Alarm Linkage | |
| Alarm Output | 2CH Alarm Output,Support Light/ Sound alarm sensor,Oil/Power cut off | |
| Interface | 3CH RS232, POS/Fuel Sensor/ LED Advertisement Connection | |
| | 2CH 485 Interface,Connect PTZ Camera | |
| | 2CH CAN interface | |
| Wireless Transmission | Support Built in 3G transmission, WCDMA, CDMA2000,GPRS, EDGE Built in 4G module optional, TDD-LTE, FDD-LTE | |
| GPS Position | Support Built GPS/BD Module | |
| | HDD | Max 2.5" 2TB HDD |
| Storage | SD Card | Max 128GB SD Card Mirror Recording Keep Data Safety |
| | Update | Support USB Updating, SD Card Updatin, OTA Remote Updating |
| | File Format | H.264 |
| | File System | Special FAT32 File System |
| | USB | USB Interface on Front Panel for data back up by U Disk,Hard Disk |
| Record Replay | Video Search | Search By Record Time/Record Type etc |
| | Playback | Max support 4CH Replay /Stop/Fast/Slow at same time Support forward and backward play at the speed of: x 2,x4,x8,x16. |
| Security | User/Admin 2 Level Different Password | |

| | | |
|---------------------|------------------|---|
| Optional Functions | Voice Call | Support voice call each other |
| | Serial Expand | Support LED Advertisement Panel□Oil Sensor□ POS□Bus Station Broadcaster□ Car OBD,ect.external device |
| Voltage & Power | Power Management | Wide Voltage.Support Timed/Delay off |
| | Input Voltage | DC:+6V - +36V |
| | Power | Working □5W |
| | Temperature | -20°C - +70°C |
| Working Environment | Humidity | 20% - 80% |
| | Size | 200 □D□* 187□W□* 62□H□ mm |
| Others | Weight | 1.90 Kg |

Main Features

1. HIS Solution,H.264 Compression,support 4CH 720P AHD input/ 4CH analog standard definition Camera input/2CH HD + 2CH SD mixed input;
2. 3CH video output (2CH CVBS video, support front&rear panel output; VGA output for optional.)
3. Exclusive pre-allocate File System protect data completeness, prevent SD Card fragment,ensure date stablely and completely.
4. 8-36V wide voltage with low power consumption.
5. Unique UPS Technology ensures the integrality of record when power failure occurs,even can for 8-10s.
6. HDD+SD Card Storage (Support 2.5" HDD, max 128G SD Card) protect from Shock & Dust damage ;support USB port data backup and device update;
7. Support 2 USB interfaces, data backup and device upgrade.
8. Support 9CH alarm input (1CH analog input + 8CH IO alarm input), 2CH independent alarm output.
9. Support 2 CAN interfaces.
10. Support HDD heating functions,can work in harsh environment.
11. Support GPS/BD/G-Sensor Extension modul;
12. Realize real-time monitor through 3G/4G;
13. Support WIFI module, can download data automatically.
- 14 Support Broadcast/Intercom/Text sent etc;can add oil sensor/temperature sensor/POS/LED Advertisement Panel;
15. Support SMS remote configure/ control device;

16. OTA(On-The-Air) Device automatically upgrade function, can upgrade to updated version , maintenance is more convenient.

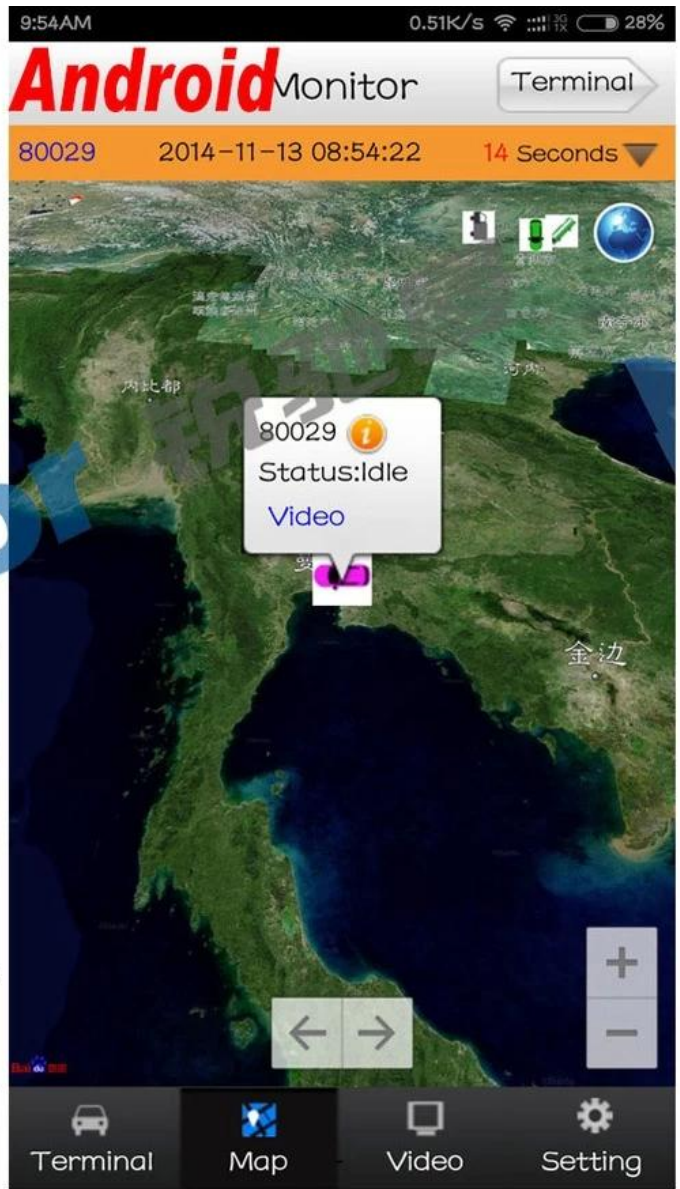
17. Support voice call function.

18. Support IOS/Android Phone Remote monitor

PC Software interface for gps tracking

The screenshot shows the 'Mobile monitoring and management platform' interface. The top navigation bar includes 'Welcome to log in,RCMTEST', 'System', 'Video', 'Map', 'Playback', 'System Set', 'Log Query', and 'Extend App'. The left sidebar displays a 'Dev List' with a tree view of devices under 'Monitor Center(5/12)'. The main area features four video feeds labeled '1' through '4', each showing a different camera angle of a vehicle interior. The right sidebar contains a search bar and a map showing the vehicle's location on a road network. The bottom status bar provides real-time monitoring data: 'Running: 00:02:02', 'Monitor:1 Online:1 Alarm:0 Offline:0 Idling:0 ACC OFF:0 GPS Invalid:0', and 'Online:5 / Number of set loss:5 / Arrears:0 / Total:12 Line Rate:41.67% / Lost Rate:41.67%'. A table below the status bar lists device details for 'Device: 贵C87762', including 'Positioning Time: 2015-08-11 10:10:19', 'Position: 福建省漳州市龙文区G76(厦蓉高速公路)', 'Speed: 0.00 km/h(Northwest)', and 'Alarm: (On)'. The status bar also includes 'Monitoring', 'System Event', and a copyright notice: '© 2015 Baidu - Data © navinfo & CenNavi & 道道通'.

Android/IOS APP Monitor



Server software interface

Vehicle Management System Welcome! 销售客户 | Manager | Exit

Report Device User

Mileage Summary

Begin Time: 2016-01-08 00:00:00 To: 2016-01-08 16:27:09

Device: All Devices Select Device Query Export To Excel Export To Csv Export To Pdf

| Index | Vehicle | Total Mileage (KM) | Begin Time | Start Mileage (KM) | Start Position | End Time | End Mileage (KM) |
|-------|---------|--------------------|---------------------|--------------------|-----------------------|---------------------|------------------|
| 1 | 粤EX3114 | 174.88 | 2016-01-08 09:03:32 | 22.95 | 22.534264, 114.006444 | 2016-01-08 16:25:41 | 157.83 |
| 2 | 粤EX3130 | 202.07 | 2016-01-08 07:33:17 | 18.1 | 22.884299, 112.892602 | 2016-01-08 16:25:28 | 171.57 |
| 3 | 24012 | 277.42 | 2016-01-08 07:09:55 | 23.41 | 23.369562, 116.675227 | 2016-01-08 14:57:24 | 300.83 |
| 4 | 冀A76248 | 97.4 | 2016-01-08 00:00:25 | 299.97 | 41.572469, 118.786245 | 2016-01-08 09:42:39 | 41.09 |
| 5 | 24023 | 0 | 2016-01-08 00:00:07 | 16.26 | 37.758759, 120.731127 | 2016-01-08 16:19:07 | 16.26 |
| 6 | 鲁QW5387 | 416.36 | 2016-01-08 06:09:54 | 96.66 | 35.461432, 117.643793 | 2016-01-08 16:20:11 | 92.83 |
| 7 | 鲁J81712 | 120.98 | 2016-01-08 04:48:40 | 26.51 | 35.876478, 117.681941 | 2016-01-08 14:25:07 | 144.92 |
| 8 | 粤H65250 | 45.81 | 2016-01-08 00:00:03 | 139.13 | 22.654394, 112.498593 | 2016-01-08 16:15:15 | 115.82 |
| 9 | 粤H65153 | 40.61 | 2016-01-08 00:00:27 | 92 | 22.854197, 112.497665 | 2016-01-08 16:11:28 | 73.72 |
| 10 | 粤H65368 | 111.72 | 2016-01-08 00:00:15 | 145.61 | 22.654321, 112.498645 | 2016-01-08 16:24:48 | 93.9 |
| 11 | 粤H65010 | 52.02 | 2016-01-08 00:00:10 | 93.24 | 22.854234, 112.497795 | 2016-01-08 16:15:55 | 57.92 |
| 12 | 鲁AA3683 | 855.08 | 2016-01-08 00:00:29 | 354.36 | 35.950643, 117.659700 | 2016-01-08 16:24:44 | 1009.74 |
| 13 | 24058 | 224.42 | 2016-01-08 07:00:58 | 44.57 | 37.949788, 118.844070 | 2016-01-08 16:17:34 | 60.4 |
| 14 | 28999 | 2.36 | 2016-01-08 13:13:09 | 17.6 | 28.734420, 121.235847 | 2016-01-08 13:57:27 | 19.81 |
| 15 | 01568 | 369.29 | 2016-01-08 00:00:54 | 51.04 | 33.733305, 115.868921 | 2016-01-08 16:03:58 | 420.33 |

Application



Good Relationship with our Customers



For more information pls feel free to contact Amily:

Email: overseasales-2@rcmcctv.com

Skype: rcmcctvsales2

QQ: 2355778097

MB/whatsapp: +86 18929314790