

Araba cep DVR için Wifi, G-Sensor GPS ile H.264 çift SD kart 3G mobil DVR

Modeli: RCM-MDR301WDG

Ana Özellik:

1. 4 Kanal SD kart Mobil DVR
2. Destek 3G, GPS, WiFi, G-sensörü, UPS fonksiyonu
3. Destek PTZ uzaktan kumanda
4. Destek gerçek zamanlı izleme
5. SD gün yazılır Destekler
6. yedekleme destekler ve SD kart ile yükseltin
- Yeniden iktidara sonrası 7. Öz recorvery
- Amortisör ile 8. Sağlam alüminyum alaşım yapısı

Resimleri:





Özellikler:

Öğeler	Cihaz parametreleri	Performans endeksi
İsim	Ürün Adı	4 Kanal Mobil DVR (SD Depolama)
Sistem	İşletim Sistemi	Linux
	Operasyon Arayüzü	Grafik arabirimleri, isteğe bağlı İngilizce / Çince
	Dosya Sistemi	Tescilli Format
	Sistem Ayrıcalıklar	Kullanıcı Şifre
Video	Video Girişi	4ch SDI Bağımsız Giriş: 1.0 Vp-p, 75Ω.Both B & W ve Renkli Kameralar
	Video Çıktı	1 Kanal PAL / NTSC Çıkış, 1.0 Vp-p, 75Ω, Kompozit Video Sinyali
	Video Görüntü	1 Veya 4 Ekran
	Video Standardı	PAL: 25frames / sn; NTSC: 30 çerçeve / sn
	Sistem Kaynakları	PAL: 100 Çerçeveler; NTSC: 120 Çerçeveler

Ses	Ses Girişİ	Dört Kanallar Bağımsız Giriş & nbsp; 500Ω
	Ses Çıkışı	1 Kanal (4 Kanal Serbestçe dönüştürme Olabilir)
	Temel Çıktı & nbsp; Seviye	1.0-2.2V
	Bozulma Artı Gürültü	≤-30dB
	Kayıt Modu	Ses Ve Görüntü Senkronizasyon
	Ses Sıkıştırma	ADPCM
Alarm	Alarm	4 Kanal Bağımsız Girdi. Yüksek Gerilim Tetik
	Alarm çıkışı	2 Kanallar bağımsız çıkış
	Algılama taşı	Mevcut
Ağ Arayüz	Tel hattı Erişim	Bir RJ45 Ethernet Bağlantı Noktası Expand Can
	Wifi	Bir WiFi Modülü İç Expand Can
	3G	Bir WCDMA veya CDMA2000 Modülü İç Expand Can
GPS Arayüzü	Küresel Konumlama Sistemi	İçeride GPS Modülü Expand Can
Arayüzü uzatın	Interkom	İnterkom Modülü İç Expand Can
	G-Sensör	G-Sensör Modülü İç Expand Can
Diğerleri	Güç Tüketimi	DC8-36V & nbsp; % 5 & nbsp; & nbsp; ≤10W
	Çalışma Sıcaklığı	-20 °C ~ + 85 °C & nbsp; ≤80%
	Saat	Dahili Saat, Takvim
Paketleme	Ürün Boyutu	138 (L) * 112 (W) * 36 (H) mm
	Ürün Net Ağırlığı	360g

Bizim CMS yazılım uygulaması:

**Vehicle with device for test in AC Coach
Lahore to Sadiq Abad near motorway @ 86Km/h**

The screenshot displays a vehicle monitoring software interface. The main window shows a Google Map of Lahore, Pakistan, with a vehicle icon and a data popup for device ALI01. The popup displays: Time: 2013-11-02 21:59:50, Speed: 86.00 km/h(South), Position: Katar Bund Road, Lahore, Pakistan, Alarm: ACC ON, SD Card Exist, 3G Signal Normal, Video Intercom Monitor Snapshot More. On the right, there are four video camera feeds showing the interior of the vehicle. At the bottom, there is a status bar with 'Monitoring / Alarm Information / System Event /' and a playback control bar.

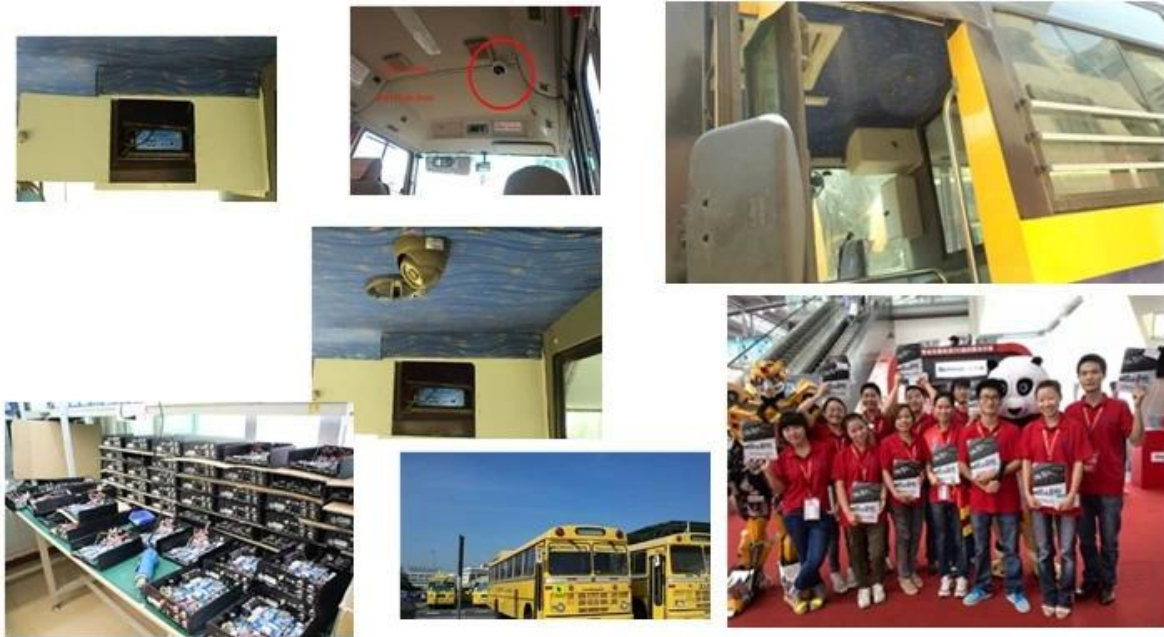
İçin , Windows PC'nizi gerçek zamanlı Gözetim

İçin IOS & Android işletim Cep Telefonu Gözetim



Araçlar için Bizim Mobil DVR projesi





Sertifikasi:

VERIFICATION OF CONFORMITY

Verification of Conformity
Reference No.: LC0129429719

Responsible Party: Shenzhen Rishuo Technology Development Co., LTD.
Address: 2F No.24 West Longquan Road, Longhua New District, Shenzhen, China
Product: Tablet
Model No.: RCM-IPC24, RCM-IPC28, RCM-LP24, RCM-LP28, RCM-MPC24, RCM-MPC28, RCM-MPC24L, RCM-MPC28L, RCM-MPC24H, RCM-MPC28H, RCM-MPC24LH, RCM-MPC28LH, RCM-MPC24HL, RCM-MPC28HL, RCM-MPC24HLH, RCM-MPC28HLH, RCM-MPC24HLH1, RCM-MPC28HLH1
Trade Mark: Rishuo
Standard: FCC CFR 47 PART 15 Subpart B, 2011, ANSI C63.4 2002

Important note:
This device is in compliance with Part 15 of the FCC Rules and Regulations for radio frequency device. Operation of this product is subject to the following two conditions:
(1) This device may not cause harmful interference, and (2) this device must accept any interference received, including interference that originates from radio transmitting devices.
The user must refer to the applicable FCC Rules and Regulations. The method of testing used in accordance with the most accurate measurement standards possible, and that all necessary steps have been undertaken to ensure that all production units of the same equipment will continue to comply with the Federal Communications Commission's requirements.

Shenzhen LCC Compliance Testing Laboratory Ltd
1F, Jingnong Industrial Park, Tangba Road, Bao'an Dist., Bao'an District, Shenzhen, Guangdong, China
Tel: 867573-62091122
Fax: 867573-62091122
Http://www.LCC-test.com Email: admin@lcc-test.com

Manager
April 16, 2013

VERIFICATION OF CONFORMITY

Verification of Conformity
Reference No.: LC0129429719

Responsible Party: Shenzhen Rishuo Technology Development Co., LTD.
Address: 2F No.24 West Longquan Road, Longhua New District, Shenzhen, China
Product: Mobile DVR
Model No.: RCM-MDPC10, RCM-MDPC16, RCM-MDPC18, RCM-MDPC20, RCM-MDPC24, RCM-MDPC28, RCM-MDPC30, RCM-MDPC36, RCM-MDPC40, RCM-MDPC48
Trade Mark: Rishuo
Standard: FCC CFR 47 PART 15 Subpart B, 2011, ANSI C63.4 2002

Important note:
This device is in compliance with Part 15 of the FCC Rules and Regulations for radio frequency device. Operation of this product is subject to the following two conditions:
(1) This device may not cause harmful interference, and (2) this device must accept any interference received, including interference that originates from radio transmitting devices.
The user must refer to the applicable FCC Rules and Regulations. The method of testing used in accordance with the most accurate measurement standards possible, and that all necessary steps have been undertaken to ensure that all production units of the same equipment will continue to comply with the Federal Communications Commission's requirements.

Shenzhen LCC Compliance Testing Laboratory Ltd
1F, Jingnong Industrial Park, Tangba Road, Bao'an Dist., Bao'an District, Shenzhen, Guangdong, China
Tel: 867573-62091122
Fax: 867573-62091122
Http://www.LCC-test.com Email: admin@lcc-test.com

Manager
April 16, 2013

CERTIFICATE OF CONFORMITY

CERTIFICATE of Conformity
Reference No.: LC0129429719

Applicant: Shenzhen Rishuo Technology Development Co., LTD.
Address: 2F No.24 West Longquan Road, Longhua New District, Shenzhen, China
Product: Mobile DVR
Model No.: RCM-MDPC10, RCM-MDPC16, RCM-MDPC18, RCM-MDPC20, RCM-MDPC24, RCM-MDPC28, RCM-MDPC30, RCM-MDPC36, RCM-MDPC40, RCM-MDPC48
Trade Mark: Rishuo

The submitted products have been tested in all the listed standards and found in compliance with the following European Directives:

The EMC Directive 2004/104/EC
EMC EN55022, EN 55024, EN 60928

The tests were performed in normal operation mode. This test result applies only to the particular sample tested and to the specific model number only. This certificate applies specifically to the sample investigated in our test laboratory only. No other samples.

The CE marking as shown below can be affixed on the product after completion of necessary technical documentation.

Other relevant Directives have to be observed.

Shenzhen LCC Compliance Testing Laboratory Ltd
1F, Jingnong Industrial Park, Tangba Road, Bao'an Dist., Bao'an District, Shenzhen, Guangdong, China
Tel: 867573-62091122
Fax: 867573-62091122
Http://www.LCC-test.com Email: admin@lcc-test.com

Manager
April 16, 2013

CE

CERTIFICATE OF CONFORMITY

CERTIFICATE of Conformity
Reference No.: LC0129429719

Applicant: Shenzhen Rishuo Technology Development Co., LTD.
Address: 2F No.24 West Longquan Road, Longhua New District, Shenzhen, China
Product: Tablet
Model No.: RCM-IPC24, RCM-IPC28, RCM-LP24, RCM-LP28, RCM-MPC24, RCM-MPC28, RCM-MPC24L, RCM-MPC28L, RCM-MPC24LH, RCM-MPC28LH, RCM-MPC24HL, RCM-MPC28HL, RCM-MPC24HLH, RCM-MPC28HLH, RCM-MPC24HLH1, RCM-MPC28HLH1
Trade Mark: Rishuo

The submitted products have been tested in all the listed standards and found in compliance with the following European Directives:

The EMC Directive 2004/104/EC
EMC EN55022, EN 55024, EN 60928

The tests were performed in normal operation mode. This test result applies only to the particular sample tested and to the specific model number only. This certificate applies specifically to the sample investigated in our test laboratory only. No other samples.

The CE marking as shown below can be affixed on the product after completion of necessary technical documentation.

Other relevant Directives have to be observed.

Shenzhen LCC Compliance Testing Laboratory Ltd
1F, Jingnong Industrial Park, Tangba Road, Bao'an Dist., Bao'an District, Shenzhen, Guangdong, China
Tel: 867573-62091122
Fax: 867573-62091122
Http://www.LCC-test.com Email: admin@lcc-test.com

Manager
April 16, 2013

CE

CERTIFICATE OF CONFORMITY

CERTIFICATE of Conformity
INTERNATIONAL REGISTRATION OF MEASUREMENT ESTABLISHMENTS
Reference No.: LC0129429719

When listed as specified, the submitted sample complies with the requirements of Commission Decision of 21 July 2011 amending Directive 2002/95/EC.

Applicant: Shenzhen Rishuo Technology Development Co., LTD.
Address: 2F No.24 West Longquan Road, Longhua New District, Shenzhen, China
Trade Mark: Rishuo
Product: Tablet
Model No.: RCM-IPC24, RCM-IPC28, RCM-LP24, RCM-LP28, RCM-MPC24, RCM-MPC28, RCM-MPC24L, RCM-MPC28L, RCM-MPC24LH, RCM-MPC28LH, RCM-MPC24HL, RCM-MPC28HL, RCM-MPC24HLH, RCM-MPC28HLH, RCM-MPC24HLH1, RCM-MPC28HLH1
Standard: RoHS 2002/95/EC, REACH 2006/1825/EC

This test report is issued by the Company subject to its General Conditions of Service printed on separate paper. Attention is drawn to the limitations of liability, identification and intellectual property defined therein. This liability shown in this test report only refers to the sample(s) tested unless otherwise stated. This Test Report cannot be re-utilized, copied or full without prior written permission of the Company.

Other relevant Directives have to be observed.

Shenzhen LCC Compliance Testing Laboratory Ltd
1F, Jingnong Industrial Park, Tangba Road, Bao'an Dist., Bao'an District, Shenzhen, Guangdong, China
Tel: 867573-62091122
Fax: 867573-62091122
Http://www.LCC-test.com Email: admin@lcc-test.com

Manager
April 16, 2013

RoHS

CERTIFICATE OF CONFORMITY

CERTIFICATE of Conformity
INTERNATIONAL REGISTRATION OF MEASUREMENT ESTABLISHMENTS
Reference No.: LC0129429719

When listed as specified, the submitted sample complies with the requirements of Commission Decision of 21 July 2011 amending Directive 2002/95/EC.

Applicant: Shenzhen Rishuo Technology Development Co., LTD.
Address: 2F No.24 West Longquan Road, Longhua New District, Shenzhen, China
Trade Mark: Rishuo
Product: Mobile DVR
Model No.: RCM-MDPC10, RCM-MDPC16, RCM-MDPC18, RCM-MDPC20, RCM-MDPC24, RCM-MDPC28, RCM-MDPC30, RCM-MDPC36, RCM-MDPC40, RCM-MDPC48

This test report is issued by the Company subject to its General Conditions of Service printed on separate paper. Attention is drawn to the limitations of liability, identification and intellectual property defined therein. This test result refers only to the particular tested sample unless otherwise stated. This Test Report cannot be re-utilized, copied or full without prior written permission of the Company.

Other relevant Directives have to be observed.

Shenzhen LCC Compliance Testing Laboratory Ltd
1F, Jingnong Industrial Park, Tangba Road, Bao'an Dist., Bao'an District, Shenzhen, Guangdong, China
Tel: 867573-62091122
Fax: 867573-62091122
Http://www.LCC-test.com Email: admin@lcc-test.com

Manager
April 16, 2013

RoHS

İlgili Ürünler:



SD Mobile DVR with 3G GPS



HD Mobile DVR with 3G GPS

İşbirliği Şartları:

Ödeme koşulları: T / T, Western Union, MoneyGram, Paypal

Teslimat süresi: İçinde 5 iş günü sonra ödemeyi onaylamak.

Garanti: 12 ay

Nakliye yolu: DHL, UPS, FedEx, EMS, TNT vb

Yolları Ambalaj:



Richmor Brand Package



Standard Package

Hizmet-satış sonrası:

1. Eğer biz bunu nasıl kullanılacağını gerçekleştirmek için yardımcı olacaktır, bizim ürün alırsınız.
2. Teklif Eğer mobil DVR yazılımı kullanabilirsiniz.
3. Oniki ay garanti

4. sırasında Eğer herhangi bir sorun varsa, bizim garanti, biz bunu çözmek için yardımcı olabilir.
5. sırasında Garanti, bunu onarmak için bize dönebilirsiniz.

Açıklama: Tüm Nitelikli döner / yedek bize rehberlik gerekir, ya da iade kabul etmeyecektir önceden bize haber vermeden.

Hakkımızda:



Richmor

OEM & ODM Service

Brasil World Cup Supplier



Inner Training after study from Alibaba in July



Technical Training For Fast Response to Customer Richmor 锐驰曼



lecturer for Execution