

School Bus için High Definition D1 H.264 Mobil DVR Oyuncu(RT-MDR500)

SD Kart Mobil DVR Özellikler:

- 1.SD Card Mobile DVR, SD Card Locked for protecting the video for analyze the complete the recording.
- 2.GPRS / 3G / 4G & nbsp; GPS & nbsp; için & nbsp; isteğe bağlı
- 3.Support alarming, PTZ control, LED advertisement, broadcast, Text scheduling, talk backi ng(driver to the head office)
- 4.RJ45port: & nbsp; Emlak & nbsp; zamanı & nbsp; izleme & nbsp; & nbsp; eğer, hiçbir & nbsp; 3G.
- 5.Support & nbsp; mobil & nbsp; telefon & nbsp; izleme (iPhone, & nbsp; iPad, & nbsp; Android)
- 6.Function & nbsp; Extended, Fonksiyon özelleştirilmiş ve & nbsp; yazılım & nbsp; yükseltmesi & nbsp; uzaktan





SD Kart Mobil DVR Parametre:

Ürün	Parametre
A & V & nbsp; Girdi	4 & nbsp; kanal, & nbsp; havacılık & nbsp; konektörü
A & V & nbsp; Çıktı	1 & nbsp; kanal, & nbsp; havacılık & nbsp; konektörü
Video ve nbsp; sıkıştırma & nbsp; biçimi	H.264
Çözünürlük	D1 / HD1 / CIF & nbsp; ayarlandı
Video ve nbsp; Çerçeve	PAL & nbsp; & amp; & nbsp; NTSC & nbsp; ayarlandı
Kayıt	Fire & nbsp; kayıt, & nbsp; zamanı & nbsp; kayıt, & nbsp; alarmı & nbsp; kayıt
Depolama	SD & nbsp; kart & nbsp; yukarı & nbsp; & nbsp; 64GB
Alarm	1CH'ye & nbsp; alarmı; & nbsp; alarmı & nbsp; ve & nbsp; kayıt & nbsp; & nbsp; aynı & nbsp; anda & nbsp;
Araç & nbsp; kayıt	Gösterilen & nbsp; & nbsp; Zaman, & nbsp; lisans & nbsp; No'ları & nbsp;. Rota & nbsp; Sürücü
Kablosuz & nbsp; İletim	Destek & nbsp; GPRS / 3G
Sistem & nbsp; Koruma	Tasarruf & nbsp; & nbsp; kayıt & nbsp; veri & nbsp; ne zaman & nbsp; & nbsp; gücünü & nbsp; off
Küresel Konumlama Sistemi	Destek & nbsp; yerleşik & nbsp; GPS
Pil	Geniş & nbsp; Gerilim & nbsp; Aralığı: & nbsp; 6V ~ 48V, & nbsp; Ani & nbsp; gerilim & nbsp; 70V
Güç	2.4W
Sistem	Gömülü & nbsp; Linux & nbsp; Sistemi
Çalışma & nbsp; çevre	Çalışma & nbsp; sıcaklığı: & nbsp; -20C °için 70C °

Boyutlar	180mm * 145mm * 45mm & nbsp; & nbsp; & nbsp; & nbsp; & nbsp; & nbsp; 1KG
----------	---



AV Input Cables



AV Output Cable



Power Cable



IO Cables



3G Antenna



GPS Antenna

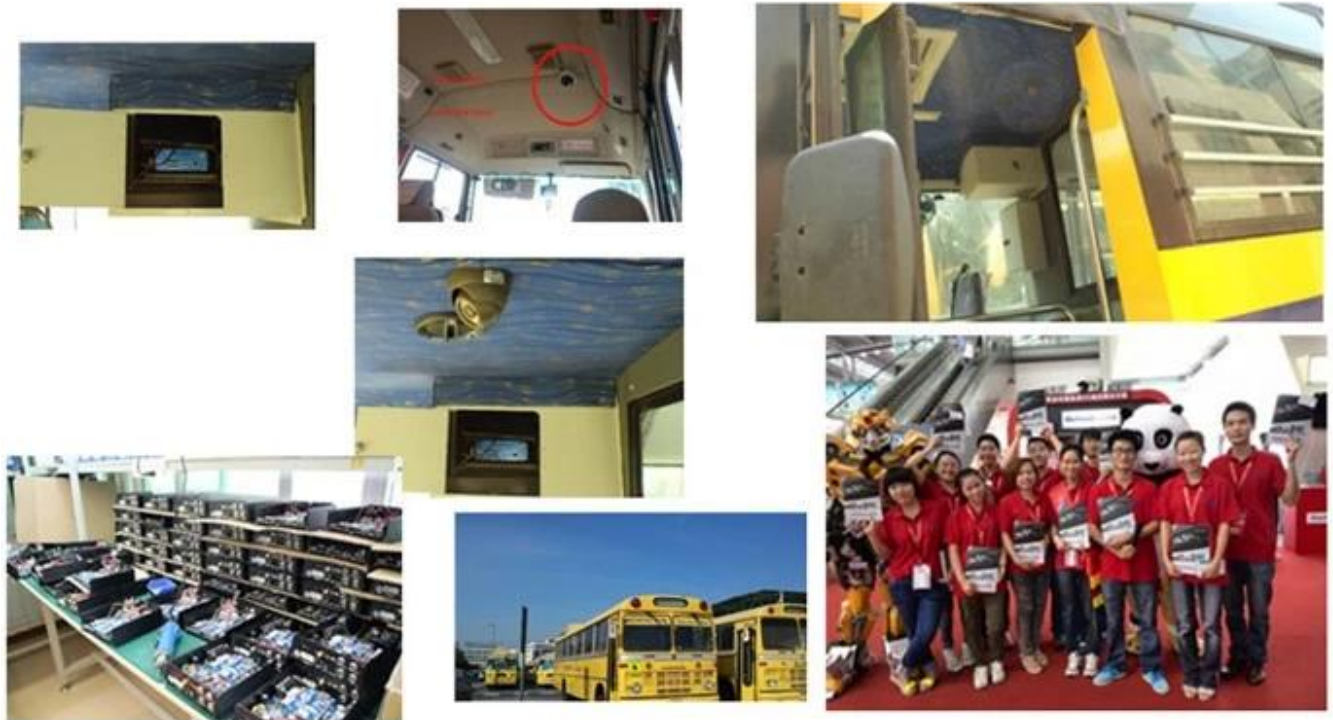


Remote Control



CD (Manual & Software inside)

Güçlü Yazılım ve Kılıfları:



SD Kart Mobil DVR'S Onay:

Verification of Conformity
Reference No: L191004028719

Responsible Party: Shenchen Remote Technology Development Co., LTD.
Address: #F No.44 West Longgang Road, Longhua New District, Shenzhen, China
Product: Camera
Model No: RCM-IP2176, RCM-IP2174, RCM-LP2176, RCM-IP2178, RCM-IP2170, RCM-IP2168, RCM-200, RCM-400, RCM-300, RCM-100, RCM-200S, RCM-300S, RCM-400S, RCM-100S, RCM-200L, RCM-300L, RCM-400L, RCM-100L
Trade Mark: Hichron
Standards: FCC CFR 47 PART 15 Subpart B, 2011, ANSI C63.4-2008

Required notes:
This device is in conformity with Part 15 of the FCC Rules and Regulations for radio frequency devices. Operation of this product is subject to the following two conditions:
(1) This device may not cause harmful interference, and (2) this device must accept any interference received, including interference that originates from authorized radio services.
We warrant to conform to the applicable FCC Rules and Regulations. The method of testing used is equivalent to the most accurate measurement standards possible, and that all necessary steps have been followed to ensure that all production units of the same equipment will continue to comply with the Federal Communications Commission's requirements.

Shenzhen L23 Compliance Testing Laboratory Ltd.
#F, Jingqian Industrial Park, Tengda Road, Bao'an Dist., Shenzhen District, Shenzhen, Guangdong, China
Tel: 86755-27691122 Fax: 86755-27691122
http://www.l23.com.cn Email: admin@l23.com.cn

Manager
April 19, 2015

Verification of Conformity
Reference No: L191004028719

Responsible Party: Shenchen Remote Technology Development Co., LTD.
Address: #F No.44 West Longgang Road, Longhua New District, Shenzhen, China
Product: Media DVR
Model No: RCM-MD176, RCM-MD170, RCM-MD174, RCM-MD178, RCM-MD172, RCM-MD174S, RCM-MD170S, RCM-MD176S, RCM-MD178S, RCM-MD172S
Trade Mark: Hichron
Standards: FCC CFR 47 PART 15 Subpart B, 2011, ANSI C63.4-2008

Required notes:
This device is in conformity with Part 15 of the FCC Rules and Regulations for radio frequency devices. Operation of this product is subject to the following two conditions:
(1) This device may not cause harmful interference, and (2) this device must accept any interference received, including interference that originates from authorized radio services.
We warrant to conform to the applicable FCC Rules and Regulations. The method of testing used is equivalent to the most accurate measurement standards possible, and that all necessary steps have been followed to ensure that all production units of the same equipment will continue to comply with the Federal Communications Commission's requirements.

Shenzhen L23 Compliance Testing Laboratory Ltd.
#F, Jingqian Industrial Park, Tengda Road, Bao'an Dist., Shenzhen District, Shenzhen, Guangdong, China
Tel: 86755-27691122 Fax: 86755-27691122
http://www.l23.com.cn Email: admin@l23.com.cn

Manager
April 19, 2015

CERTIFICATE of Conformity
Reference No: L191004028719

Applicant: Shenchen Remote Technology Development Co., LTD
Address: #F No.44 West Longgang Road, Longhua New District, Shenzhen, China
Product: Media DVR
Model No: RCM-MD176, RCM-MD170, RCM-MD174, RCM-MD178, RCM-MD172, RCM-MD174S, RCM-MD170S, RCM-MD176S, RCM-MD178S, RCM-MD172S
Trade Mark: Hichron

The applicant products have been tested to comply with the latest standards and found to conform with the following European Directives:
The EMC Directive 2004/108/EC
EN 60950-1:2005, EN 60950-2:2005

The tests were performed in normal operation mode. The test results apply only to the particular sample tested and in the specific tests carried out. This certificate declares conformity in the scope investigated in our test laboratory under only.
The CE markings on these labels can be affixed to the product after preparation of necessary technical documentation.
Other relevant Directives have to be observed.

CE

Shenzhen L23 Compliance Testing Laboratory Ltd.
#F, Jingqian Industrial Park, Tengda Road, Bao'an Dist., Shenzhen District, Shenzhen, Guangdong, China
Tel: 86755-27691122 Fax: 86755-27691122
http://www.l23.com.cn Email: admin@l23.com.cn

Manager
April 19, 2015

CERTIFICATE of Conformity
Reference No: L191004028719

Applicant: Shenchen Remote Technology Development Co., LTD
Address: #F No.44 West Longgang Road, Longhua New District, Shenzhen, China
Product: Camera
Model No: RCM-IP2176, RCM-IP2174, RCM-LP2176, RCM-IP2178, RCM-IP2170, RCM-IP2168, RCM-200, RCM-400, RCM-300, RCM-100, RCM-200S, RCM-300S, RCM-400S, RCM-100S, RCM-200L, RCM-300L, RCM-400L, RCM-100L
Trade Mark: Hichron

The applicant products have been tested to comply with the latest standards and found to conform with the following European Directives:
The EMC Directive 2004/108/EC
EN 60950-1:2005, EN 60950-2:2005

The tests were performed in normal operation mode. The test results apply only to the particular sample tested and in the specific tests carried out. This certificate declares conformity in the scope investigated in our test laboratory under only.
The CE markings on these labels can be affixed to the product after preparation of necessary technical documentation.
Other relevant Directives have to be observed.

CE

Shenzhen L23 Compliance Testing Laboratory Ltd.
#F, Jingqian Industrial Park, Tengda Road, Bao'an Dist., Shenzhen District, Shenzhen, Guangdong, China
Tel: 86755-27691122 Fax: 86755-27691122
http://www.l23.com.cn Email: admin@l23.com.cn

Manager
April 19, 2015

CERTIFICATE of Conformity
Reference No: L191004028719

When tested as specified, the applicant products conform with the requirements of Commission Decision of 27 Aug 2011 amending Decision 2011/933/EC

Applicant: Shenchen Remote Technology Development Co., LTD
Address: #F No.44 West Longgang Road, Longhua New District, Shenzhen, China
Trade Mark: Hichron
Product: Camera
Model No: RCM-IP2176, RCM-IP2174, RCM-LP2176, RCM-IP2178, RCM-IP2170, RCM-IP2168, RCM-200, RCM-400, RCM-300, RCM-100, RCM-200S, RCM-300S, RCM-400S, RCM-100S, RCM-200L, RCM-300L, RCM-400L, RCM-100L

The test report is issued by the Company subject to its General Conditions of Service printed without alteration in copies to the limitations of liability, indemnification and jurisdiction stated without alteration. The results shown in this test report are only in the samples tested unless otherwise stated. This Test Report cannot be reproduced, stored in full, without prior written permission of the Company.
Other relevant Directives have to be observed.

RoHS

Shenzhen L23 Compliance Testing Laboratory Ltd.
#F, Jingqian Industrial Park, Tengda Road, Bao'an Dist., Shenzhen District, Shenzhen, Guangdong, China
Tel: 86755-27691122 Fax: 86755-27691122
http://www.l23.com.cn Email: admin@l23.com.cn

Manager
April 19, 2015

CERTIFICATE of Conformity
Reference No: L191004028719

When tested as specified, the applicant sample complies with the requirements of Commission Decision of 27 Aug 2011 amending Decision 2011/933/EC

Applicant: Shenchen Remote Technology Development Co., LTD
Address: #F No.44 West Longgang Road, Longhua New District, Shenzhen, China
Trade Mark: Hichron
Product: Media DVR
Model No: RCM-MD176, RCM-MD170, RCM-MD174, RCM-MD178, RCM-MD172, RCM-MD174S, RCM-MD170S, RCM-MD176S, RCM-MD178S, RCM-MD172S

The test report is issued by the Company subject to its General Conditions of Service printed without alteration in copies to the limitations of liability, indemnification and jurisdiction stated without alteration. The results shown in this test report are only in the samples tested unless otherwise stated. This Test Report cannot be reproduced, stored in full, without prior written permission of the Company.
Other relevant Directives have to be observed.

RoHS

Shenzhen L23 Compliance Testing Laboratory Ltd.
#F, Jingqian Industrial Park, Tengda Road, Bao'an Dist., Shenzhen District, Shenzhen, Guangdong, China
Tel: 86755-27691122 Fax: 86755-27691122
http://www.l23.com.cn Email: admin@l23.com.cn

Manager
April 19, 2015

İlgili Ürünler: [Google Map GPS Takip ile HDD 3G Mobil DVR](#)

SD Kart Mobil DVR'S Ambalaj:



SD Mobil DVR'S Nakliye Ürün Kodu:

1. FedEx / DHL / UPS / TNT için örneklerinde, Kapıdan Kapiya;

2. Teslimat Zaman: 3-7 gün için örneklerinin; negoniation için toplu mallar.

Ödeme Şartları:

1. Ödeme: T / T, Batı Birliği, Paypal; % 30 mevduat; % 70 dengesi önce teslimat.

2. Adedi: 1 adet

3. Garanti : 1years

4. Package Bilgiler: 1 adet başına kutusunda, marka, ambalaj, nötral ambalaj ve özelleştirilmiş ambalaj

Neden Biz seçimi?

1.We vardır Alibaba Değerlendirilen 3 yaş Altın Tedarikçi.

2.We are a factory manufacturing,best production capability ,best quality control, Best Service .

3.Inspected by the Inspection Institution of Bureau Veritas Certification.

4.100% QC muayene Before Shippment.

5. CE / RoHS / FCC listede, competitve fiyat.



Richmor

OEM & ODM Service

Brasil World Cup Supplier