

Tam Fonksiyonu ile Çin Mobil DVR Üretici 3G Mobil DVR (RT-MDR7000)

China Mobile DVR'S Ana Özellik:

1. 4 kanal HD & amp; SD kart Mobil DVR
2. Destek 3G, GPS, WiFi, G-sensörü, UPS fonksiyonu
3. Destek PTZ uzaktan kumanda
4. Destek gerçek zamanlı izleme
5. HD günlerinde tarafından yazılır Destekler
6. yedekleme desteği ve HD & Gamble ile yükseltmesi; SD kart
- Yeniden iktidara sonrası 7. Öz recorvery
- Amortisör ile 8. Sağlam alüminyum alaşım yapısı
9. CE FCC RoHS Onayı

China Mobile DVR'S Resimler:



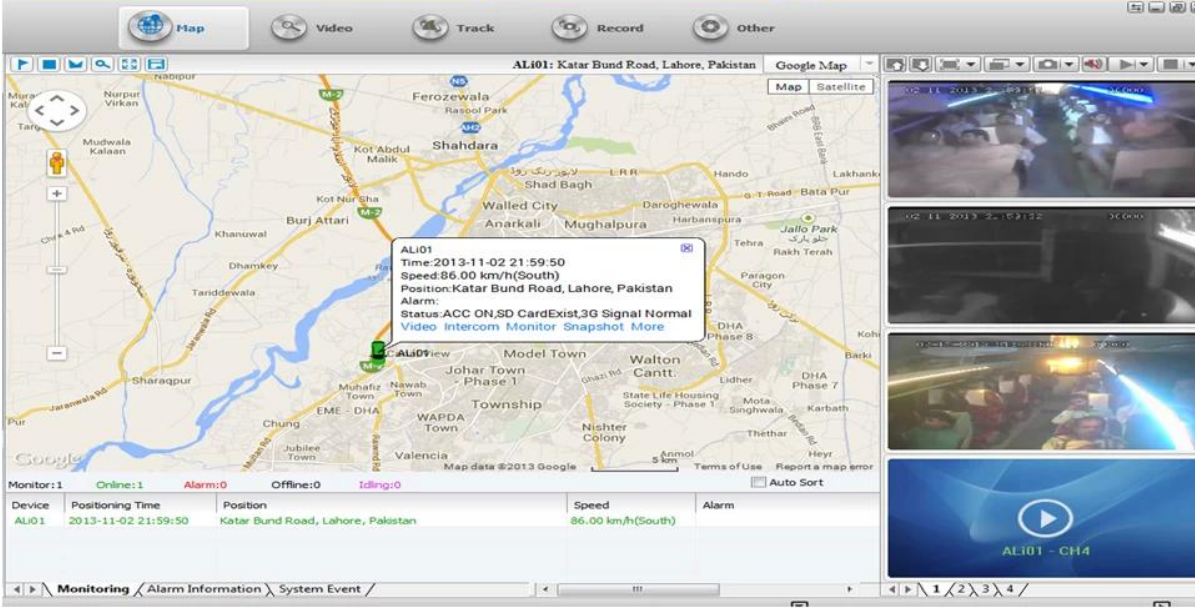


China Mobile DVR'S Özellikler:

Öğeler	Cihaz parametreleri	Performans endeksi
İsim	Ürün Adı	4 Kanal Mobil DVR (HDD & SD Depolama)
Sistem	İşletim Sistemi	Linux
	Operasyon Arayüzü	Grafik arabirimleri, isteğe bağlı İngilizce / Çince
	Dosya Sistemi	Tescilli Format
	Sistem Ayrıcalıklar	Kullanıcı Şifre
Video	Video Girişi	4ch SDI Bağımsız Girdi: 1.0 Vp-p, 75Ω.Both B & W ve Renkli Kameralar
	Video Çıkışı	1 Kanal PAL / NTSC Çıkış, 1.0Vp-p, 75Ω, Kompozit Video Sinyali
	Video Görüntü	1 Veya 4 Ekran
	Video Standardı	PAL: 25frames / sn; NTSC: 30 çerçeve / sn
	Sistem Kaynakları	PAL: 100 Çerçeveler; NTSC: 120 Çerçeveler
Ses	Ses Girişi	Dört Kanallar Bağımsız Giriş & 500Ω
	Ses Çıkışı	1 Kanal (4 Kanal Serbestçe dönüştürme Olabilir)
	Temel Çıktı & Seviye	1.0-2.2V
	Bozulma Artı Gürültü	≤-30dB
	Kayıt Modu	Ses Ve Görüntü Senkronizasyon
	Ses Sıkıştırma	ADPCM
Alarm	Alarm	6 Kanal Bağımsız Girdi. Yüksek Gerilim Tetik
	Alarm çıkışı	1 Kanallar Bağımsız çıkışı
	Algılama taşı	Mevcut
Ağ Arayüzü	Tel hattı Erişim	Bir RJ45 Ethernet Bağlantı Noktası Expand Can
	Wifi	Bir WiFi Modülü İç Expand Can
	3G	Bir WCDMA veya CDMA2000 Modülü İç Expand Can
GPS Arayüzü	Küresel Konumlama Sistemi	Dışında GPS Modülü Expand Can
Arayüzü uzatın	Interkom	İnterkom Modülü İç Expand Can
	G-Sensör	G-Sensör Modülü İç Expand Can

Diğerleri	Güç Tüketimi	DC8-36V & nbsp; % 5 & nbsp; & nbsp; ≤10W
	Çalışma Sıcaklığı	-20 °C ~ + 85 °C & nbsp; ≤80%
	Saat	Dahili Saat, Takvim
Paketleme	Ürün Boyutu	200 (L) * 160 (W) * (Tutucu) 62 (H) mm
	Ürün Net Ağırlığı	(HDD olmadan) 2.2kg

Vehicle with device for test in AC Coach Lahore to Sadiq Abad near motorway @ 86Km/h



Windows PC'de gerçek zamanlı Gözetimi

IOS & Android işletim Cep Telefonu Gözetim



Araçlar için Bizim Mobil DVR projesi



China Mobile DVR'S Onay:

VERIFICATION OF CONFORMITY

Verification of Conformity
Reference No. LC030403870

Responsible Party : Shenzhen Ruckun Technology Development Co., LTD.
Address : 2F No.88 West Longgang Road, Longhua New District, Shenzhen, China
Product : Camera
Model No. : RCM-P020, RCM-P024, RCM-P026, RCM-P028, RCM-P030, RCM-P032, RCM-P034, RCM-P036, RCM-P038, RCM-P040, RCM-P042, RCM-P044, RCM-P046, RCM-P048, RCM-P050, RCM-P052, RCM-P054, RCM-P056, RCM-P058, RCM-P060, RCM-P062, RCM-P064, RCM-P066, RCM-P068, RCM-P070, RCM-P072, RCM-P074, RCM-P076, RCM-P078, RCM-P080, RCM-P082, RCM-P084, RCM-P086, RCM-P088, RCM-P090, RCM-P092, RCM-P094, RCM-P096, RCM-P098, RCM-P100
Trade Mark : Ruckun
Standard : FCC CFR 47 PART 15 Subpart B, 2011, AMR 2013-1-200

Important note:
This device is in compliance with Part 15 of the FCC Rules and Regulations for radio frequency devices. Operation of the product is subject to the following two conditions:
(1) This device may not cause harmful interference, and (2) this device must accept any interference received, including interference that may cause undesired operation.
This device is in compliance with the applicable FCC Rules and Regulations. The method of testing was in accordance to the most accurate measurement applicable possible, and that all necessary steps have been authorized to ensure that all products under the same equipment will continue to comply with the Federal Communications Commission's requirements.

Shenzhen LCC Compliance Testing Laboratory Ltd.
2/F, Longgang Industrial Park, Longgang Road, Bao'an District, Shenzhen, Guangdong, China
Tel: (86)755-82691132 Fax: (86)755-82691133
http://www.lcc-test.com E-mail: test@shenzhenlcc.com



Manager
April 16, 2013

VERIFICATION OF CONFORMITY

Verification of Conformity
Reference No. LC030403870

Responsible Party : Shenzhen Ruckun Technology Development Co., LTD.
Address : 2F No.88 West Longgang Road, Longhua New District, Shenzhen, China
Product : Mobile DVR
Model No. : RCM-M020, RCM-M024, RCM-M028, RCM-M032, RCM-M036, RCM-M040, RCM-M044, RCM-M048, RCM-M052, RCM-M056, RCM-M060, RCM-M064, RCM-M068, RCM-M072, RCM-M076, RCM-M080, RCM-M084, RCM-M088, RCM-M092, RCM-M096, RCM-M100
Trade Mark : Ruckun
Standard : FCC CFR 47 PART 15 Subpart B, 2011, AMR 2013-1-200

Important note:
This device is in compliance with Part 15 of the FCC Rules and Regulations for radio frequency devices. Operation of the product is subject to the following two conditions:
(1) This device may not cause harmful interference, and (2) this device must accept any interference received, including interference that may cause undesired operation.
This device is in compliance with the applicable FCC Rules and Regulations. The method of testing was in accordance to the most accurate measurement applicable possible, and that all necessary steps have been authorized to ensure that all products under the same equipment will continue to comply with the Federal Communications Commission's requirements.

Shenzhen LCC Compliance Testing Laboratory Ltd.
2/F, Longgang Industrial Park, Longgang Road, Bao'an District, Shenzhen, Guangdong, China
Tel: (86)755-82691132 Fax: (86)755-82691133
http://www.lcc-test.com E-mail: test@shenzhenlcc.com



Manager
April 16, 2013

CERTIFICATE of Conformity
Reference No. LC030403870

Applicant : Shenzhen Ruckun Technology Development Co., LTD.
Address : 2F No.88 West Longgang Road, Longhua New District, Shenzhen, China
Product : Mobile DVR
Model : RCM-M020, RCM-M024, RCM-M028, RCM-M032, RCM-M036, RCM-M040, RCM-M044, RCM-M048, RCM-M052, RCM-M056, RCM-M060, RCM-M064, RCM-M068, RCM-M072, RCM-M076, RCM-M080, RCM-M084, RCM-M088, RCM-M092, RCM-M096, RCM-M100
Trade Mark : Ruckun

The submitted products have been tested to conform with the latter standards and found in compliance with the following European Directive:
The EMC Directive 2004/108/EC
EN 55022: 2007, EN 55024: 2010

The tests were performed in normal operation mode. The test results apply only to the particular sample tested and to the specific test carried out. This certificate applies specifically to the sample investigated and is not an endorsement in any way.
The CE marking on shown below can be affixed to the product after preparation of necessary technical documentation.
Other relevant Directives have to be obtained.

Shenzhen LCC Compliance Testing Laboratory Ltd.
2/F, Longgang Industrial Park, Longgang Road, Bao'an District, Shenzhen, Guangdong, China
Tel: (86)755-82691132 Fax: (86)755-82691133
http://www.lcc-test.com E-mail: test@shenzhenlcc.com



Manager
April 16, 2013

CE

CERTIFICATE of Conformity
Reference No. LC030403870

Applicant : Shenzhen Ruckun Technology Development Co., LTD.
Address : 2F No.88 West Longgang Road, Longhua New District, Shenzhen, China
Product : Camera
Model : RCM-P020, RCM-P024, RCM-LP016, RCM-LP018, RCM-LP020, RCM-LP022, RCM-LP024, RCM-LP026, RCM-LP028, RCM-LP030, RCM-LP032, RCM-LP034, RCM-LP036, RCM-LP038, RCM-LP040, RCM-LP042, RCM-LP044, RCM-LP046, RCM-LP048, RCM-LP050, RCM-LP052, RCM-LP054, RCM-LP056, RCM-LP058, RCM-LP060, RCM-LP062, RCM-LP064, RCM-LP066, RCM-LP068, RCM-LP070, RCM-LP072, RCM-LP074, RCM-LP076, RCM-LP078, RCM-LP080, RCM-LP082, RCM-LP084, RCM-LP086, RCM-LP088, RCM-LP090, RCM-LP092, RCM-LP094, RCM-LP096, RCM-LP098, RCM-LP100
Trade Mark : Ruckun

The submitted products have been tested to conform with the latter standards and found in compliance with the following European Directive:
The EMC Directive 2004/108/EC
EN 55022: 2007, EN 55024: 2010

The tests were performed in normal operation mode. The test results apply only to the particular sample tested and to the specific tests carried out. This certificate applies specifically to the sample investigated and is not an endorsement in any way.
The CE marking on shown below can be affixed to the product after preparation of necessary technical documentation.
Other relevant Directives have to be obtained.

Shenzhen LCC Compliance Testing Laboratory Ltd.
2/F, Longgang Industrial Park, Longgang Road, Bao'an District, Shenzhen, Guangdong, China
Tel: (86)755-82691132 Fax: (86)755-82691133
http://www.lcc-test.com E-mail: test@shenzhenlcc.com



Manager
April 16, 2013

CE

CERTIFICATE of Conformity
Reference No. LC030403870

Applicant : Shenzhen Ruckun Technology Development Co., LTD.
Address : 2F No.88 West Longgang Road, Longhua New District, Shenzhen, China
Trade Mark : Ruckun
Product : Camera
Model : RCM-P020, RCM-P024, RCM-LP016, RCM-LP018, RCM-LP020, RCM-LP022, RCM-LP024, RCM-LP026, RCM-LP028, RCM-LP030, RCM-LP032, RCM-LP034, RCM-LP036, RCM-LP038, RCM-LP040, RCM-LP042, RCM-LP044, RCM-LP046, RCM-LP048, RCM-LP050, RCM-LP052, RCM-LP054, RCM-LP056, RCM-LP058, RCM-LP060, RCM-LP062, RCM-LP064, RCM-LP066, RCM-LP068, RCM-LP070, RCM-LP072, RCM-LP074, RCM-LP076, RCM-LP078, RCM-LP080, RCM-LP082, RCM-LP084, RCM-LP086, RCM-LP088, RCM-LP090, RCM-LP092, RCM-LP094, RCM-LP096, RCM-LP098, RCM-LP100
Standard : RoHS

The test result is based on the Company's report to the Federal Conditions of Service stated (unless otherwise stated) in the conditions of safety, identification and professional issues without device. The results shown in this test report refer only to the particular tested sample of the Company.
Other relevant Directives have to be obtained.

Shenzhen LCC Compliance Testing Laboratory Ltd.
2/F, Longgang Industrial Park, Longgang Road, Bao'an District, Shenzhen, Guangdong, China
Tel: (86)755-82691132 Fax: (86)755-82691133
http://www.lcc-test.com E-mail: test@shenzhenlcc.com



Manager
April 16, 2013

RoHS

CERTIFICATE of Conformity
Reference No. LC030403870

Applicant : Shenzhen Ruckun Technology Development Co., LTD.
Address : 2F No.88 West Longgang Road, Longhua New District, Shenzhen, China
Trade Mark : Ruckun
Product : Mobile DVR
Model : RCM-M020, RCM-M024, RCM-M028, RCM-M032, RCM-M036, RCM-M040, RCM-M044, RCM-M048, RCM-M052, RCM-M056, RCM-M060, RCM-M064, RCM-M068, RCM-M072, RCM-M076, RCM-M080, RCM-M084, RCM-M088, RCM-M092, RCM-M096, RCM-M100

The test report is based on the Company's report to the General Conditions of Service stated (unless otherwise stated) in the conditions of safety, identification and professional issues without device. The results shown in this test report refer only to the particular tested sample of the Company.
Other relevant Directives have to be obtained.

Shenzhen LCC Compliance Testing Laboratory Ltd.
2/F, Longgang Industrial Park, Longgang Road, Bao'an District, Shenzhen, Guangdong, China
Tel: (86)755-82691132 Fax: (86)755-82691133
http://www.lcc-test.com E-mail: test@shenzhenlcc.com



Manager
April 16, 2013

RoHS

China Mobile DVR'S ilgili Ürünler:
[Tam Fonksiyonu ile Sanayi Seviye Mobil DVR](http://www.3g.cn)

İşbirliği Şartları:

Ödeme koşulları: T / T, Western Union, MoneyGram, Paypal
Teslimat süresi: 5 iş günü içerisinde sonra ödemeyi onaylamak.
Garanti: 12 ay
Nakliye yolu: DHL, UPS, FedEx, EMS, TNT vb
Yolları Ambalaj:



Richmor Brand Package



Standard Package

Hizmet-satış sonrası:

Eğer ürünlerimizi aldıktan sonra 1., biz nasıl kullanılacağını gerçekleştirmek için size yardımcı olacaktır.

2. Teklif Eğer mobil DVR kullanıyorsanız yazılımı.

3. Oniki ay garanti

Eğer herhangi bir sorun varsa, bizim garanti sırasında 4., biz bunu çözmek için yardımcı olabilir.

Bizim garanti süresince 5., bunu onarmak için bize dönebilirsiniz.

Açıklama: Tüm kalifiye döner / yedek bize rehberlik gerekir, ya da önceden bize haber vermeden iade kabul etmeyecektir.

Hakkımızda:



Richmor

OEM & ODM Service

Brasil World Cup Supplier



Inner Training after study from Alibaba in July



Technical Training For Fast Response to Customer Richmor 锐驰曼



lecturer for Execution