

## Product Description

### User Manual for Mobile Network Video Recorder(MNVR) Model : RCM-MDR9000

1. Real time HD video record, **1080p/720p/D1/HD1/CIF** optional, video quality adjustable, support 4ch 1080p or 8ch 720p video record, 2ch video output.
2. Professional vehicle voltage design, support 8-36v wide voltage input; transient voltage can be 6-70v, over-load/over-voltage/short circuit/reverse protection for kinds of vehicle;
3. **ACC delay** (max support 24 hours delay);
4. Support 1CH CAN, OBD;
5. Support **PTZ control**/pos/fuel sensor, led advertisement;
6. Support **SD card** upgrading/**OTA** upgrading
7. Support **wireless** AP hotspot;
8. Support local picture capture when alarm trigger;
9. 2CH alarm output, support audible&visual alarm, oil/power cut off;
10. 8CH alarm input (door open/close; lighting; turning; braking; reversing etc), multi-alarm linkage;
11. Support manual , overspeed /lowspeed, parking, motion detection, cross the border, route deviation fatigue
12. driving, dangerous driving and lane departure, detection alarm;
13. Support remote video/audio monitor, talk back function, remote PTZ control;
14. Support **IE web configuration**, support MSG/software configuration/Software get configuration;
15. Auto record/timing record /alarm record working mode option, for different request; display&record vehicle driving status/plate no; driving route, speed information for easily management;
16. Special file predistribution function, solve the file fragmentation of disk re-writing;
17. **Watch dog function**, protect device and video lost from device reboot;
18. HDD+SD card record (support **2.5"1TB HDD** and **128GB SD card** )shockproof design protect data lost from shock&dust;
19. DC12v voltage output, can offer power for cameras and some other accessories;
20. HIS solution, **H.264** video compression with multi-stream record;
21. Size: 190mm(D)\*188mm(W)\*67mm(H)

## Product Features:

- ◆ HIS Solution,H.264 Compression, Multiple stream recording, support 4CH 1080P AHD Mega pixels camera input;
- ◆ High quality real time recording,1080P/ 720P/CIF/HD1/D1 Optional, quality adjustable;
- ◆ Professional Car Power Design,8-36V wide voltage,Provide reverse voltage/overload/short circuit protection, to meet kinds of car application;
- ◆ Support 12VDC output voltage,power supply for Camera/Screen etc;
- ◆ HDD+SD CARD record (support 2.5" HDD + max 128GB SD Card ),protect NVR from shock & Dust damage;
- ◆ Watchdog abnormal restart function,protect SD Card and Record;
- ◆ Exclusive pre-allocate DVR Special File System Technology,Solving repeatedly wipe cause file fragmentation, and ensure the integrity of the data.
- ◆ ACC Delay off,can set 24 hours;
- ◆ Unique UPS Technology ensures the integrality of record when power failure occurs,even can for 10-15s.
- ◆ Auto Record/Manual Record/Alarm Record etc working mode to meet different requirements;
- ◆ Show Car status/Plate/Driving Route/Low Speed/Over Speed information for convenient management;
- ◆ Support GPS/BD,3G/4G Module Optional,WIFI extend;
- ◆ Strong Network,phone device configure ,Support SMS Get device information and configure;
- ◆ Support Video&Audio Monitoring,Intercom, PTZ, Alarm,Over speed,Geo Fence etc through remote control platform;
- ◆ 7CH Alarm input(Door Open,Light,Turn direction,brake,reverse etc),can linkage kinds of alarm;
- ◆ 2CH alarm output, Support the linkage acousto-optic alarm, cut off fuel oil/power,etc .
- ◆ 1CH CAN port, get the information of car.
- ◆ High level aviation interface,easily installation and better shockproof, more stable;
- ◆ Easily Smart GUI Interface, saving time in device setting;
- ◆ Strong Stable Application,Support Real-time monitor, talk-back,playback,record,picture snap etc;
- ◆ Updated through SD or OTA Remote Automatic updating,more stable and convenient;
- ◆ Support Phone Remote Monitor, 3G Phone Calling etc;
- ◆ Support PTZ/POS/Oil Sensor/LED Advertisement Panel etc;
- ◆ Support Ministry of Transport Standard Agreement
- ◆ Be Customized according your request;

## Main Functions

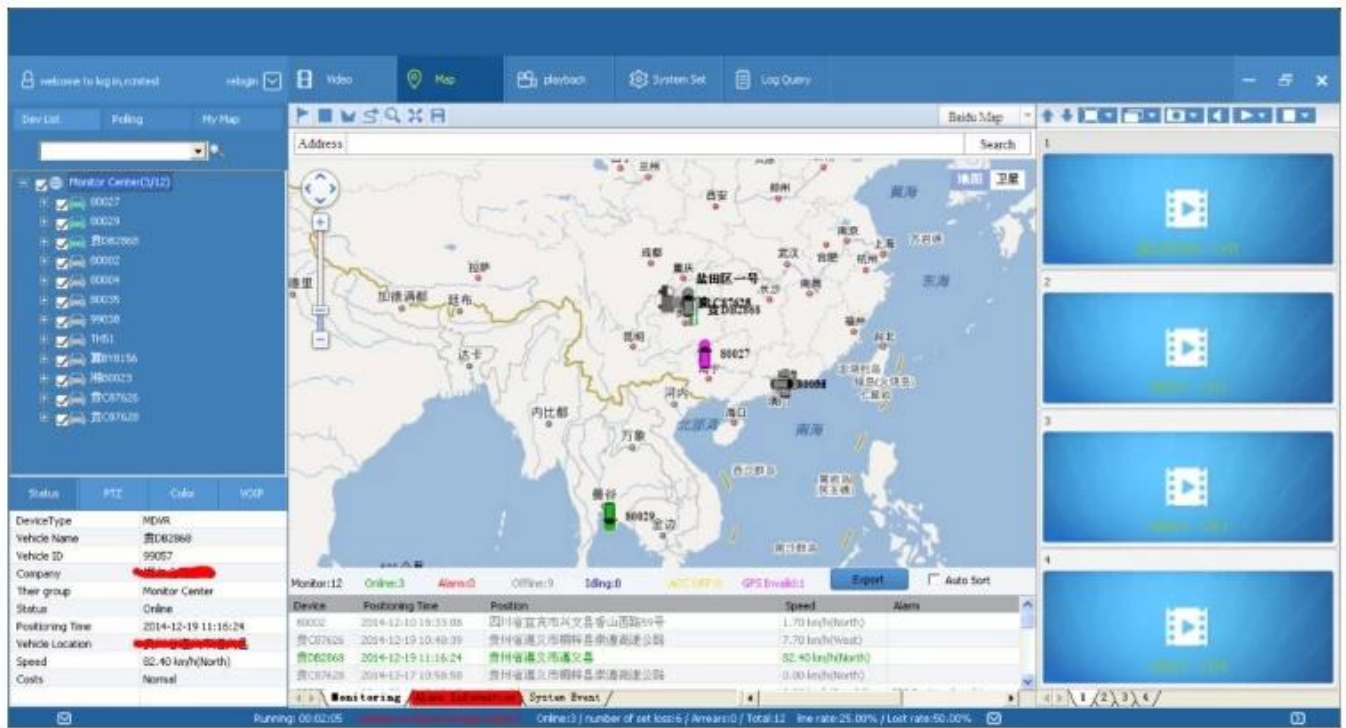
Item		Parameter
OS		Linux
Language		Chinese/English/Others (can be customized)
Video Compression		H.264 Compression Mode
OSD		Overlays information such as date time and vehicle ID
GUI	Graphical User Interface	Can connect to external LED screen. Setup system parameters with the remote control.
Video RecordSystem	Video Input	4CH 1080p input ,aviation connector.
	Video Output	1CH CVBS+ VGA output for optional, 1.0Vp-p, 75Ω
	Preview	Support 1 channel and 4 channels preview,Support Manual/Alarm Trigger full screen preview
	Resolution	1080p/720p/D1/HD1/CIF, MAX:4 channels 1080p
	Video Quality	0-7 levels, 0 is the highest level, 7 is the lowest level.
	Video Standard	CIF: 256Kbps ~ 1.5Mbps, multi levels video quality optional HD1: 600Kbps ~ 2.5Mbps, multi levels video quality optional D1: 800Kbps ~ 3Mbps, multi levels video quality optional 720P:4Mbps-6Mbps, multi levels video quality optional 1080P:4Mbps-8Mbps, multi levels video quality optional
	Record Mode	The default setting is auto recording after power on. Timed recording, alarm trigger recording and manual recording are supported.
Audio	Audio Input	4CH
	Audio Output	1CH
	Compression	G.711 compression, 8KB/s speed
Alarm Input		8CH IO Alarm Input; Support alarm linkage function
Alarm Output		2CH power on/off Alarm Output, Support the linkage acousto-optic alarm, cut off fuel oil/power,etc
Communication Interface		2CH RS232, support extension device, such as POS machine, Oil Feul sensor, LED advertising screen , etc.
		2CH 485 interface, can connect PTZ,etc.
		1CH CAN interface.
Wireless transfer		Support Built-in 3G/4G network, WCDMA,CDMA2000,TDD-LTE,FDD-LTE... TD-SCDMA Compatible with GPRS,EDGE
Position		Support Built GPS/BD Module,can make playback analysis of vehicle routing
G-Sensor		Support G-sensor

Video Storage	Storage	2.5" HDD+ SD Card,each max 2TB HDD + 128GB SD Card mirror recording to protect data from loss
	Upgrade	Support USB flash disk updating,SD card upgrade , OTA remote upgrade automatically
	File Format	.264 General video format
	File System	Professional MNVR File System
	USB	Front panel supports USB port, support USB flash disk upgrade to backup; hard disk box USB port, can back up video data
Video Playback	Video Search	Search video by Record Time/Record Type etc
	Playback	Max support 4CH Replay /Stop/Fast Forward/Fast Reverse at same time
		Support x 2,x4,x8,x16. fast forward or fast backward play
Safety Management		User/Admin 2 Levels Different Passwords , support screen lock
Voltage & Power Consumption	Power Management	Adaptive wide power input, support Wide Voltage, Over-load、 Over-voltage、 Short Circuit、 Reverse Protection..Support Time Setting/Delay power off
	Voltage Input	DC:+8V ~ +36V
	Voltage Output	+12V@2.5A , +5V@2.5A
	Power-off Protection	UPS Technology,All video information can be saved automatically when the power is cut off, and make sure that all the files can not be damaged.
	Power Consumption	Normal Working <5W
Working Environment	Temperature	-20℃ to +70℃
	Humidity	20% to 80%
others	Size	187 (D) * 188 (W) * 67 (H) mm
	Net Weight	1.8kg

## RMSV6 INTERFACE

Easily Smart GUI Interface, saving time in device setting.





## Customer Feedback

---



**David from USA.**

This supplier has good softwares ability and can meet my needs. The sample works very good. I am hoping to order more.

**Tony from Russia.**

The cooperation is satisfied. The products are good. Very strong housing case. My clients like a lot.



**Jose from Columbia.**

We made correct decision in choosing this supplier. We are now having much better management and control on our vehicles. The ticket cash are more each day.



## Products Show



[illegible]

<div style="text-align: center;">   <b>Verification of Conformity</b>                      Reference No. 1131304030719                 </div>	
Responsible Party	Shenzhen Nuclear Technology Development Co., Ltd.
Address	2F No. 10 West Longgang Road, Longgang New District, Shenzhen
Product	Model 2048
Model No.	NCM-40071000, NCM-40071001, NCM-40071002, NCM-40071003, NCM-40071004, NCM-40071005, NCM-40071006, NCM-40071007, NCM-40071008, NCM-40071009, NCM-40071010, NCM-40071011, NCM-40071012, NCM-40071013, NCM-40071014, NCM-40071015, NCM-40071016, NCM-40071017, NCM-40071018, NCM-40071019, NCM-40071020, NCM-40071021, NCM-40071022, NCM-40071023, NCM-40071024, NCM-40071025, NCM-40071026, NCM-40071027, NCM-40071028, NCM-40071029, NCM-40071030, NCM-40071031, NCM-40071032, NCM-40071033, NCM-40071034, NCM-40071035, NCM-40071036, NCM-40071037, NCM-40071038, NCM-40071039, NCM-40071040, NCM-40071041, NCM-40071042, NCM-40071043, NCM-40071044, NCM-40071045, NCM-40071046, NCM-40071047, NCM-40071048, NCM-40071049, NCM-40071050, NCM-40071051, NCM-40071052, NCM-40071053, NCM-40071054, NCM-40071055, NCM-40071056, NCM-40071057, NCM-40071058, NCM-40071059, NCM-40071060, NCM-40071061, NCM-40071062, NCM-40071063, NCM-40071064, NCM-40071065, NCM-40071066, NCM-40071067, NCM-40071068, NCM-40071069, NCM-40071070, NCM-40071071, NCM-40071072, NCM-40071073, NCM-40071074, NCM-40071075, NCM-40071076, NCM-40071077, NCM-40071078, NCM-40071079, NCM-40071080, NCM-40071081, NCM-40071082, NCM-40071083, NCM-40071084, NCM-40071085, NCM-40071086, NCM-40071087, NCM-40071088, NCM-40071089, NCM-40071090, NCM-40071091, NCM-40071092, NCM-40071093, NCM-40071094, NCM-40071095, NCM-40071096, NCM-40071097, NCM-40071098, NCM-40071099, NCM-40071100, NCM-40071101, NCM-40071102, NCM-40071103, NCM-40071104, NCM-40071105, NCM-40071106, NCM-40071107, NCM-40071108, NCM-40071109, NCM-40071110, NCM-40071111, NCM-40071112, NCM-40071113, NCM-40071114, NCM-40071115, NCM-40071116, NCM-40071117, NCM-40071118, NCM-40071119, NCM-40071120, NCM-40071121, NCM-40071122, NCM-40071123, NCM-40071124, NCM-40071125, NCM-40071126, NCM-40071127, NCM-40071128, NCM-40071129, NCM-40071130, NCM-40071131, NCM-40071132, NCM-40071133, NCM-40071134, NCM-40071135, NCM-40071136, NCM-40071137, NCM-40071138, NCM-40071139, NCM-40071140, NCM-40071141, NCM-40071142, NCM-40071143, NCM-40071144, NCM-40071145, NCM-40071146, NCM-40071147, NCM-40071148, NCM-40071149, NCM-40071150, NCM-40071151, NCM-40071152, NCM-40071153, NCM-40071154, NCM-40071155, NCM-40071156, NCM-40071157, NCM-40071158, NCM-40071159, NCM-40071160, NCM-40071161, NCM-40071162, NCM-40071163, NCM-40071164, NCM-40071165, NCM-40071166, NCM-40071167, NCM-40071168, NCM-40071169, NCM-40071170, NCM-40071171, NCM-40071172, NCM-40071173, NCM-40071174, NCM-40071175, NCM-40071176, NCM-40071177, NCM-40071178, NCM-40071179, NCM-40071180, NCM-40071181, NCM-40071182, NCM-40071183, NCM-40071184, NCM-40071185, NCM-40071186, NCM-40071187, NCM-40071188, NCM-40071189, NCM-40071190, NCM-40071191, NCM-40071192, NCM-40071193, NCM-40071194, NCM-40071195, NCM-40071196, NCM-40071197, NCM-40071198, NCM-40071199, NCM-40071200, NCM-40071201, NCM-40071202, NCM-40071203, NCM-40071204, NCM-40071205, NCM-40071206, NCM-40071207, NCM-40071208, NCM-40071209, NCM-40071210, NCM-40071211, NCM-40071212, NCM-40071213, NCM-40071214, NCM-40071215, NCM-40071216, NCM-40071217, NCM-40071218, NCM-40071219, NCM-40071220, NCM-40071221, NCM-40071222, NCM-40071223, NCM-40071224, NCM-40071225, NCM-40071226, NCM-40071227, NCM-40071228, NCM-40071229, NCM-40071230, NCM-40071231, NCM-40071232, NCM-40071233, NCM-40071234, NCM-40071235, NCM-40071236, NCM-40071237, NCM-40071238, NCM-40071239, NCM-40071240, NCM-40071241, NCM-40071242, NCM-40071243, NCM-40071244, NCM-40071245, NCM-40071246, NCM-40071247, NCM-40071248, NCM-40071249, NCM-40071250, NCM-40071251, NCM-40071252, NCM-40071253, NCM-40071254, NCM-40071255, NCM-40071256, NCM-40071257, NCM-40071258, NCM-40071259, NCM-40071260, NCM-40071261, NCM-40071262, NCM-40071263, NCM-40071264, NCM-40071265, NCM-40071266, NCM-40071267, NCM-40071268, NCM-40071269, NCM-40071270, NCM-40071271, NCM-40071272, NCM-40071273, NCM-40071274, NCM-40071275, NCM-40071276, NCM-40071277, NCM-40071278, NCM-40071279, NCM-40071280, NCM-40071281, NCM-40071282, NCM-40071283, NCM-40071284, NCM-40071285, NCM-40071286, NCM-40071287, NCM-40071288, NCM-40071289, NCM-40071290, NCM-40071291, NCM-40071292, NCM-40071293, NCM-40071294, NCM-40071295, NCM-40071296, NCM-40071297, NCM-40071298, NCM-40071299, NCM-40071300, NCM-40071301, NCM-40071302, NCM-40071303, NCM-40071304, NCM-40071305, NCM-40071306, NCM-40071307, NCM-40071308, NCM-40071309, NCM-40071310, NCM-40071311, NCM-40071312, NCM-40071313, NCM-40071314, NCM-40071315, NCM-40071316, NCM-40071317, NCM-40071318, NCM-40071319, NCM-4007

 <b>CERTIFICATE</b> of Conformity Reference No.: CCB-07/2012-0475	
Applicant:	Sinochem Shennan Technology Development Co., LTD.
Address:	3F No.6 West Longgang Road, Longgang New District, Shenzhen, China
Product:	Mobile DVR
Model(s):	HC-MD000A, HC-MD000B, HC-MD000C, HC-MD000D, HC-MD000E, HC-MD000F, HC-MD000G, HC-MD000H
Trade Mark:	Rohinson

The applicant products have been tested as well as the listed standards and found to conform with the following European Directives:

The EMC Directive (2004/108/EC)

To EN55022, EN55024, EN55025

The tests were performed in normal operation mode. The test results apply only to the particular version tested and to the specific model tested and do not constitute approval specifically to the sample investigated or to the listed certificate number only.

The CE markings on other parts can be affixed on the product after presentation of necessary technical documentation.

Other related Directives have to be checked.

  
 Date: April 18, 2012

 <b>CERTIFICATE</b> of Conformity Reference No.: JZC01-08-000716	
<b>Applicant:</b>	Mitsubishi Motor Technology Development Co., Ltd.
<b>Address:</b>	5F, No. 101 Wang Longgang Road, Longgang New District, Shenzhen City
<b>Product:</b>	Camera
<b>Model(s):</b>	NCM-P121S, NCM-P121S, NCM-LP121S, NCM-LP121S, NCM-IMP121, NCM-IMP121, NCM-242, NCM-242, NCM-242, NCM-242, NCM-242, NCM-242, NCM-242, NCM-242, NCM-242, NCM-P121S, NCM-IMP121, NCM-IMP121, NCM-IMP121
<b>Trade Mark:</b>	Boschman
<p>The submitted products have been tested by us with the listed standards and found to conform with the following European Directives:</p> <p>The CE Directive (EMV) (EMC)</p> <p>(EN 61010-1, EN 61010-2, EN 61010-3)</p> <p>The tests were performed in normal operation mode. The test results apply only to the particular sample tested and do not explicitly cover all cases. This certificate applies specifically to the sample investigated in our laboratory number 010.</p> <p>This CE marking as shown below can be affixed to the product after inspection if necessary technical documentation.</p> <p>(Other relevant Directives may be applicable)</p>	
<div style="display: flex; justify-content: space-between;"> <div>  <p>Shenzhen CEC Competency Testing Laboratory Ltd.            2/F, Guangdong International Plaza, Tongxin Road, Bantian Street, Baoan District, Shenzhen City, Guangdong, China            Tel: 86(0)755-26111111  <a href="http://www.ceclab.com.cn">http://www.ceclab.com.cn</a></p> </div> <div>  <p>April 10, 2015</p> </div> </div>	

[illegible]

	
<h1 style="text-align: center;">CERTIFICATE</h1> <h2 style="text-align: center;">of Conformity</h2> <h3 style="text-align: center;">20100001-Registration of Hazardous Substances</h3>	
<p style="text-align: center;">Reference No.: <b>UL-01-0001-0000-14</b></p>	
<p>When tested as specified, the submitted sample complies with the requirements of Commission Decision of 21 July 2002 amending Directive 2002/95/EC (RoHS).</p>	
Applicant:	<b>Shenzhen National Technology Development Co., Ltd.</b>
Address:	<b>2F, No. 64 West Longgang Road, Longgang New District, Shenzhen, China</b>
Trade Mark:	<b>Redragon</b>
Product:	<b>Mouse (USB)</b>
Version:	<b>PC/M-MOUSE, PC/M-MOUSE, PC/M-MOUSE, PC/M-MOUSE, PC/M-MOUSE, PC/M-MOUSE, PC/M-MOUSE, PC/M-MOUSE</b>
<p>This test report is issued by the Company subject to its Standard Conditions of Service printed separately. Attention is drawn to the limitations of liability, interpretation and confidentiality issues outlined therein. This results sheet is this test report only and is not intended to replace other documents issued. This Test Report should be reproduced, except in full, without prior written permission of the Company.</p>	
<p>Other relevant documents have to be supplied.</p>	
<div style="display: flex; justify-content: space-between; align-items: center;"> <div> <h1 style="margin: 0;">RoHS</h1> <p style="margin: 0;">Shenzhen UL2 Compliance Testing Laboratory Ltd. 1/F, Wingkee Industrial Park, Tongle Road, Shen-Mei, Shenzhen, Guangdong, China Tel: 0086-755-83201100 Email: ul@ulap.com.cn http://www.ulap.com.cn</p> </div> <div style="text-align: center;">  <p style="margin: 0;"><i>Handwritten Signature</i> <b>Manager</b> April 18, 2012</p> </div> </div>	

## FAQ

### **Q:Are you factory manufacturer or trade company?**

We are factory manufacturer,we have our own factory and technology/skill support,we have engineers to support/take charge of R&D ,resolve problems product.

### **Q: Does the MDVR support Hard drive and SD card?**

Yes, HDD version MDVR supports SSD, HDD, and SD card. SD card version MDVR supports max 2 SD card.The storage capacity can be from 32GB to 2TB.

### **Q: Is it difficult to install MDVR into the vehicle?**

**Actually it is easy to install it into vehicle. Most driver can figure out how to connect the power cables.**And the camera installation is more easy. Just screw, connect and mount on the target place inside the vehicle.

### **Q: If I need door open and close alarm, overspeed alarm, reverse video, brake video, left-turn video, right-turn video, etc,is it available?**

Definitely yes!The I/O RS232 and 485 extension port is for all expanded purposes, including the functions above.In fact, there are more customized functions which can be connect through this port, such as Fuel sensor, Counter system,PTZ camera, and so on.

### **Q: We have our own platform and server, can we use your MDVR? Do you have SDK or can you do customized platform for us?**

Yes, we have SDK ready and welcome your OEM customized order!

**Q: We have our own platform and server, can we use your MDVR? Do you have SDK or can you do customized platform for us?**

Yes, we have SDK ready and welcome your OEM customized order!

**Q: Does the MDVR come with accessory, such as HDD, SD card, Microphone, Camera, Extension cable etc?**

We have all accessories ready. You can ask us to make the complete quote for one whole set. Normally the MDVR doesn't include any accessory. Therefore it is advisable to inform us about your target accessory. All are can done right here. One-stop-serve purchasing.

**Q: Can I get a sample to test before formal order?**

Yes, you can. We can provide sample with 1 month test period. It will demand some deposit and the delivery (both send and resend) cost is supposed to be on your own side. If the deliver cost is not so high, we recommend this way. If not, then we do not recommend you do this. Do not forget the import tax as well.

**Q: How many camera in one set? Can I use my own accessory?**

A: The accessory depends on you. The normal quotation is based on MDVR only. The accessory would not be quoted until you ask for them. And it is OK to use your own accessory. It is compatible.

**Q: What can I do if the MDVR fails to work?**

A: You can send it back to us. Remember that we provide 12 months quality warranty under normal use. If you send it back, we will inspect the MDVR in details and repair it for you. However we seldom have returned defective MDVR. The quality is rather good!



Welcome to contact **Sylvia** for more details

By Skype: rmcctvsales4

By Trade manager: cn1001765398

By We chat: Jobslovers

By What's app: +86 18126263832

By E-mail: [overseasales-4@rcmcctv.com](mailto:overseasales-4@rcmcctv.com)

---

Easily Smart WIN8 Interface, saving time in device setting.

