

Cartão SD 4CH Móvel DVR com GPS 3G para School Bus Segurança

Modelo: RCM-MDR501WDG

Característica principal:

- 1 4 cartão SD canal DVR móvel
- 2 Suporte 3G, função GPS
- 3 Suporte Controlo remoto PTZ
- 4 Suporte vigilância em tempo real
5. suporta SD substituídos por dia
- 6 Suporta backup e upgratde com cartão SD
- 7 Auto recorvery após falha eléctrica
- 8 estrutura de liga de alumínio estável com amortecedor

Fotos:





Especificação:

Itens	Os parâmetros do dispositivo	Índice de desempenho
Nome	Nome do produto	DVR 4 Channel Mobile (Armazenamento SD)
Sistema	Operação do Sistema	Linux
	Interface de Operação	Interfaces gráficas, Chinês / Inglês opcional
	Sistema de Arquivos	Formato proprietário
	Privilégios de Sistema	Usuário Senha

Vídeo	Entrada de vídeo	4 canais de entrada SDI Independent: 1,0 Vp-p, 75Ω.Both B & amp; W e Color Câmeras
	Vídeo Saída	1 canal de saída PAL / NTSC, 1,0 Vp-p, 75Ω, Sinal de Vídeo Composto
	Exibição de vídeo	Mostrar 1 ou 4 Tela
	Video Standard	PAL: 25frames / s; NTSC: 30frames / Sec
	Recursos do sistema	PAL: 100 Frames; NTSC: 120 Frames
Áudio	Entrada de Áudio	Dois canais de entrada independentes & nbsp; 500Ω
	Saída de Áudio	Um canal (4 canais podem ser livremente converter)
	Saída Basic & nbsp; Nível	1.0-2.2V
	Distorção mais ruído	≤-30dB
	Modo de Gravação	A sincronização de imagem e som
	Compressão de áudio	ADPCM
Alarme	Alarme em	4 canais de entrada independentes. Disparo de Alta Tensão
	Saída de alarme	2 canais de saída independentes
	Mover Detectar	disponível
Rede Interface	3G	Pode expandir um WCDMA ou CDMA2000 Módulo Dentro
GPS interface	GPS	Pode Expandir Módulo GPS dentro
Estender interface	Intercom	Pode Expandir Intercom módulo dentro
Outros	Consumo de energia	DC8-36V & nbsp; 5% & nbsp; & nbsp; ≤10W
	Temperatura de trabalho	-20 °C ~ + 85 °C & nbsp; ≤80%
	Relógio	Relógio embutido, Calendar
Embalagem	Tamanho do produto	170 (L) * 141(W) *41(H) mm
	Peso líquido do produto	0,7Kg

Nossa aplicação de software CMS:

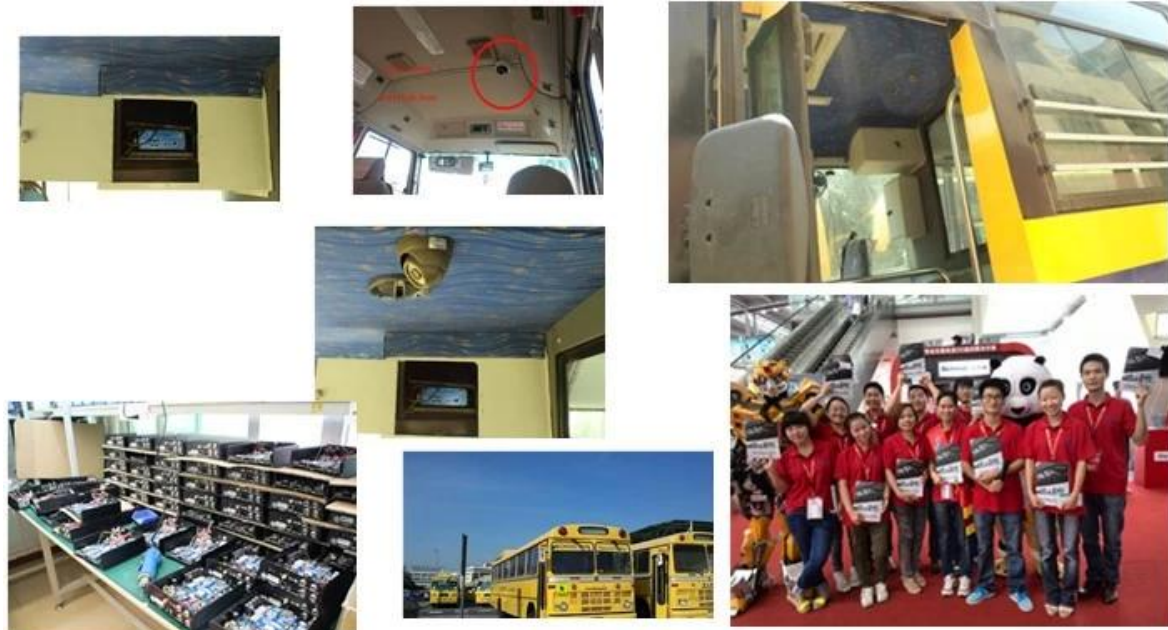


Para PC com Windows Vigilância em tempo real

Para IOS & Fiscalização do telefone Android OS mobile



Nosso projeto DVR móvel para veículos



Certificação:

VERIFICATION OF CONFORMITY

Verification of Conformity
Reference No.: LC0130402870

Responsible Party: Shenzhen Reaktor Technology Development Co., LTD.
Address: 27 No.84 West Longgang Road, Longhua New District, Shenzhen, China
Product: Camera
Model No.: RCM-PC20L, RCM-PC20L, RCM-LP20L, RCM-PC20L, RCM-AP20L, RCM-AP20L, RCM-30L, RCM-30L, RCM-40L, RCM-40L, RCM-50L, RCM-50L, RCM-60L, RCM-60L, RCM-70L, RCM-70L, RCM-80L, RCM-80L, RCM-90L, RCM-90L
Trade Mark: Reaktor
Standards: FCC CFR 47 PART 15 Subpart B, 2011, ANSI C63.4-2008

Important note:
This device is in compliance with Part 15 of the FCC Rules and Regulations for radio frequency devices. Operation of the product is subject to the following two conditions:
(1) This device may not cause harmful interference, and (2) this device must accept any interference received, including interference that may cause undesired operation.
The EMC Directive 2014/53/EU
EN 55032, EN 55034, EN 55035
This test was performed in normal operation mode. This test results apply only to the particular sample tested and to the specific test method used. This certificate applies specifically to the sample investigated in our test reference number only.
The CE marking is shown below and is affixed to the product after preparation of necessary technical documentation.
Clear technical documents have to be obtained.

Shenzhen LCC Compliance Testing Laboratory Ltd.
17, Jingqian Industrial Park, Tengda Road, Bao'an District, Shenzhen, Guangdong, China
Tel: 86755-26291122 Fax: 86755-26291122
http://www.lcc-test.com Email: admin@lcc-test.com

Manager
April 16, 2013

VERIFICATION OF CONFORMITY

Verification of Conformity
Reference No.: LC0130402870

Responsible Party: Shenzhen Reaktor Technology Development Co., LTD.
Address: 27 No.84 West Longgang Road, Longhua New District, Shenzhen, China
Product: Mobile DVR
Model No.: RCM-M200L, RCM-M200L, RCM-M200L, RCM-M200L, RCM-M200L, RCM-M200L, RCM-M200L, RCM-M200L, RCM-M200L, RCM-M200L
Trade Mark: Reaktor
Standards: FCC CFR 47 PART 15 Subpart B, 2011, ANSI C63.4-2008

Important note:
This device is in compliance with Part 15 of the FCC Rules and Regulations for radio frequency devices. Operation of the product is subject to the following two conditions:
(1) This device may not cause harmful interference, and (2) this device must accept any interference received, including interference that may cause undesired operation.
The EMC Directive 2014/53/EU
EN 55032, EN 55034, EN 55035
This test was performed in normal operation mode. This test results apply only to the particular sample tested and to the specific test method used. This certificate applies specifically to the sample investigated in our test reference number only.
The CE marking is shown below and is affixed to the product after preparation of necessary technical documentation.
Clear technical documents have to be obtained.

Shenzhen LCC Compliance Testing Laboratory Ltd.
17, Jingqian Industrial Park, Tengda Road, Bao'an District, Shenzhen, Guangdong, China
Tel: 86755-26291122 Fax: 86755-26291122
http://www.lcc-test.com Email: admin@lcc-test.com

Manager
April 16, 2013

CERTIFICATE OF CONFORMITY
Reference No.: LC0130402870

Applicant: Shenzhen Reaktor Technology Development Co., LTD.
Address: 27 No.84 West Longgang Road, Longhua New District, Shenzhen, China
Product: Mobile DVR
Model No.: RCM-M200L, RCM-M200L, RCM-M200L, RCM-M200L, RCM-M200L, RCM-M200L, RCM-M200L, RCM-M200L, RCM-M200L, RCM-M200L
Trade Mark: Reaktor

The submitted products have been tested in accordance with the latest standards and found in compliance with the following European Directives:
The EMC Directive 2014/53/EU
EN 55032, EN 55034, EN 55035
This test was performed in normal operation mode. This test results apply only to the particular sample tested and to the specific test method used. This certificate applies specifically to the sample investigated in our test reference number only.
The CE marking is shown below and is affixed to the product after preparation of necessary technical documentation.
Clear technical documents have to be obtained.

Shenzhen LCC Compliance Testing Laboratory Ltd.
17, Jingqian Industrial Park, Tengda Road, Bao'an District, Shenzhen, Guangdong, China
Tel: 86755-26291122 Fax: 86755-26291122
http://www.lcc-test.com Email: admin@lcc-test.com

Manager
April 16, 2013

CERTIFICATE OF CONFORMITY

CERTIFICATE of Conformity
Reference No.: LC0130402870

Applicant: Shenzhen Reaktor Technology Development Co., LTD.
Address: 27 No.84 West Longgang Road, Longhua New District, Shenzhen, China
Product: Camera
Model No.: RCM-PC20L, RCM-PC20L, RCM-LP20L, RCM-PC20L, RCM-AP20L, RCM-AP20L, RCM-30L, RCM-30L, RCM-40L, RCM-40L, RCM-50L, RCM-50L, RCM-60L, RCM-60L, RCM-70L, RCM-70L, RCM-80L, RCM-80L, RCM-90L, RCM-90L
Trade Mark: Reaktor

The submitted products have been tested in accordance with the latest standards and found in compliance with the following European Directives:
The EMC Directive 2014/53/EU
EN 55032, EN 55034, EN 55035
This test was performed in normal operation mode. This test results apply only to the particular sample tested and to the specific test method used. This certificate applies specifically to the sample investigated in our test reference number only.
The CE marking is shown below and is affixed to the product after preparation of necessary technical documentation.
Clear technical documents have to be obtained.

Shenzhen LCC Compliance Testing Laboratory Ltd.
17, Jingqian Industrial Park, Tengda Road, Bao'an District, Shenzhen, Guangdong, China
Tel: 86755-26291122 Fax: 86755-26291122
http://www.lcc-test.com Email: admin@lcc-test.com

Manager
April 16, 2013

CERTIFICATE OF CONFORMITY

CERTIFICATE of Conformity
Reference No.: LC0130402870

Applicant: Shenzhen Reaktor Technology Development Co., LTD.
Address: 27 No.84 West Longgang Road, Longhua New District, Shenzhen, China
Trade Mark: Reaktor
Product: Camera
Model No.: RCM-PC20L, RCM-PC20L, RCM-LP20L, RCM-PC20L, RCM-AP20L, RCM-AP20L, RCM-30L, RCM-30L, RCM-40L, RCM-40L, RCM-50L, RCM-50L, RCM-60L, RCM-60L, RCM-70L, RCM-70L, RCM-80L, RCM-80L, RCM-90L, RCM-90L

The test result is issued by the Company subject to the General Conditions of Service printed on the back of this report. The results shown in this test report refer only to the particular tested sample unless otherwise stated. This Test Report cannot be reproduced in any form without prior written permission of the Company.
Clear technical documents have to be obtained.

Shenzhen LCC Compliance Testing Laboratory Ltd.
17, Jingqian Industrial Park, Tengda Road, Bao'an District, Shenzhen, Guangdong, China
Tel: 86755-26291122 Fax: 86755-26291122
http://www.lcc-test.com Email: admin@lcc-test.com

Manager
April 16, 2013

CERTIFICATE OF CONFORMITY

CERTIFICATE of Conformity
Reference No.: LC0130402870

Applicant: Shenzhen Reaktor Technology Development Co., LTD.
Address: 27 No.84 West Longgang Road, Longhua New District, Shenzhen, China
Trade Mark: Reaktor
Product: Mobile DVR
Model No.: RCM-M200L, RCM-M200L, RCM-M200L, RCM-M200L, RCM-M200L, RCM-M200L, RCM-M200L, RCM-M200L, RCM-M200L, RCM-M200L

The test report is issued by the Company subject to the General Conditions of Service printed on the back of this report. The results shown in this test report refer only to the particular tested sample unless otherwise stated. This Test Report cannot be reproduced in any form without prior written permission of the Company.
Clear technical documents have to be obtained.

Shenzhen LCC Compliance Testing Laboratory Ltd.
17, Jingqian Industrial Park, Tengda Road, Bao'an District, Shenzhen, Guangdong, China
Tel: 86755-26291122 Fax: 86755-26291122
http://www.lcc-test.com Email: admin@lcc-test.com

Manager
April 16, 2013

Produtos relacionados:



SD Mobile DVR with 3G GPS



SD Mobile DVR with WIFI 3G GPS G-Sensor

Cooperação Termos:

Condições de pagamento: T / T, Western Union, MoneyGram, Paypal

Prazo de entrega: Dentro de 5 dias úteis após a confirmar o pagamento.

Garantia: 12 meses

Maneira do transporte: DHL, UPS, FedEx, EMS, TNT, etc

Embalagem maneiras:



Richmor Brand Package



Standard Package

Serviço pós-venda:

- 1 Depois você recebe nossos produtos, nós vamos ajudá-lo a perceber como usá-lo.
2. Oferta você o software se você utilizar o nosso DVR móvel.
3. Doze meses de garantia
- 4 Durante a nossa garantia, se você tiver qualquer problema, nós podemos ajudá-lo a resolvê-lo.
- 5 Durante a nossa garantia, você pode voltar para nós repará-lo.

Observação: Todos retornos qualificados / substituição deve ser guiada por nós, ou não vai aceitar o seu retorno sem nos informar com antecedência.

Sobre nós:



Richmor

OEM & ODM Service

Brasil World Cup Supplier



Inner Training after study from Alibaba in July



Technical Training For Fast Response to Customer Richmor 锐驰曼



lecturer for Execution