

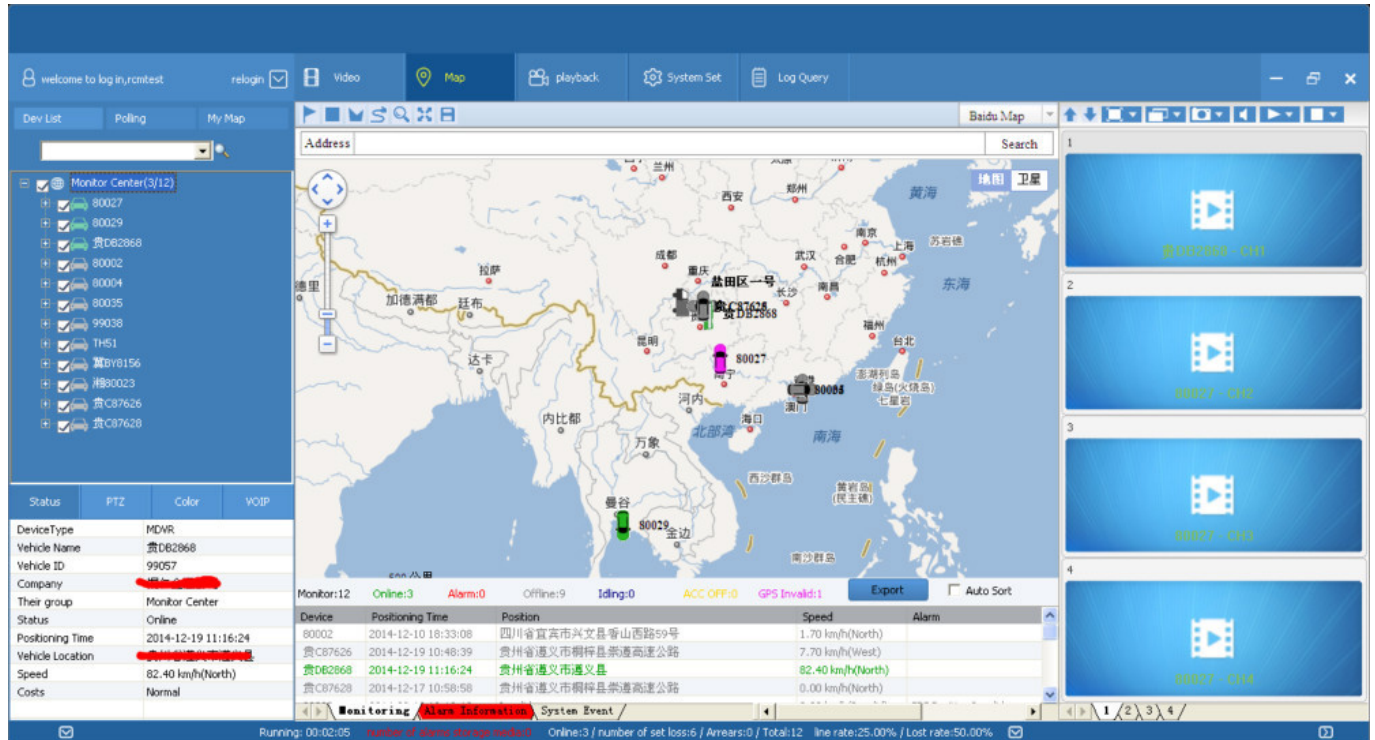
Specification

Item		Parameter
OS		Linux
Language		English/Chinese/Customized
Video Compression		H.264 Compression
OSD		Overlays information such as date time and vehicle ID
GUI	Graphical User Interface	Setup system parameters with the remote control.
Video Record System	Video Input	4CH 960P/720P AHD input,aviation connector, 1.0Vp-p, 75Ω
	Video Onput	1 CVBS, 1.0Vp-p, 75Ω,Aviation,Support 1CH Full Screen,4CH Screen view
	Preview	Support 1 channel and 4 channels preview., Support Manual/Alarm Trigger full screen preview
	Resolution	720P/D1/HD1/CIF, MAX:4 channels of 720P and 4 channels of D1
	Image Quality	1-4 levels, 1 is the highest level.
	Video Standard	PAL: 100f/s , CCIR625 line,50field; NTSC: 120f/s, CCIR525 line,60field; CIF: 256Kbps ~ 1.5Mbps, 8 level video quality optional; HD1: 600Kbps ~ 2.5Mbps, 8 level video quality optional; D1: 800Kbps ~ 3Mbps, 8 level video quality optional; 720P: 4Mbps-6Mbps, multi level video quality optional
	Record Mode	The default setting is auto recording after power on. Timed recording, alarm trigger recording and manual recording are supported.
Audio	Audio Input	4CH Aviation Plug Input
	Audio Output	2CH,headphone connect at front panel, BNC Connect on Back panel
	Compression	G.726 compression, 8KB/s speed
Alarm Input		7CH Alarm Input,1CH AD Input,impulse speed input,Alarm Linkage
Alarm Output		2CH Alarm Output,Support Light/Sound alarm sensor,Oil/Power cut off
Interface		3CH RS232, POS/Fuel Sensor/LED Advertisement Connection
Wireless Transmission		1CH 485 Interface,Connect PTZ Camera Support Built in 3G transmission,, WCDMA, CDMA2000,GPRS, EDGE; Built in 4G module optional, TDD-LTE, FDD-LTE
GPS Position		Support Built GPS/BD Module
Storage	HDD	Max 2.5" 1TB HDD
	SD Card	Max 128GB SD Card Mirror Recording Keep Data Safety
	Update	Support USB Updating, SD Card Updating,OTA Remote Updating
	File Format	H.264
	File System	Special FAT32 File System
Record Replay	USB	USB Interface on Front Panel for data back up by U Disk,Hard Disk
	Video Search	Search By Record Time/Record Type etc
	Playback	Max support 4CH Replay /Stop/Fast/Slow at same time Support forward and backward play at the speed of: x 2,x4,x8,x16.
Security		User/Admin 2 Level Different Password
Optional Functions	Voice Call	Support voice call each other
	TTS Voice Broadcast	Support TTS voice broadcast function.
	Serial Expand	Support LED Advertisement Panel,Oil Sensor, POS,Bus Station Broadcaster,Car OBD,ect.external device
Voltage & Power	Power Management	Wide Voltage.Support Timed/Delay off
	Input Voltage	DC:+6V - +36V
	Output Voltage	+12V~1.5A,+5V~1.5A
	Power	Working <5W
Working Environment	Temperature	-20℃ - +70℃
	Humidity	20% - 80%
	Size	200 (D)* 187(W)* 62(H) mm
Ohters	Weight	1.90 Kg

Our Services



CMSV6 Interface



CMSV6 In Mobile Phone

hand

Have all in the palm of your

Real-time monitoring via Mobile Phone
Support iPhone, Android, iPad system



Video & Audio Monitoring Online Vehicle GPS
Satellite Map Video Storage
PTZ control Tracking Display Picture
Snapshot Voice intercom

Q: During playback, the map doesn't show?

A: Possible reasons are as follows;

1.Net cable did not connect to PC;

2.Net works, but the computer can not get to the Internet;

Q: When SD card and HDD records, How is the record coverage?

A: SD card and HDD will record circularly for each other. When they are full, they will delete the original video records respectively.

Q: The device was opened, HDD was installed, but the device can not record successful.

A: 1.Check the HDD/SD Card was formatted or not, the unformatted HH/SD Card can not be used. Enter into the Main Menu - System Setup - Formatting the new installed HDD/SD Card.

2. If the recording channel is closed, if set the timing recording, it can not recording when it beyond the period of timing recording.

3. If the HDD is connect well, if the HDD/SD light is on.



Richmor Brand Package



Standard Package



Shipping

Strong cooperated with DHL/UPS Etc for fast and safety delivery.

a. 2-5 days after payment cleared for sample order.

b. 5-10 days after payment cleared depends on order quantity for bulk order.

Payment



Exhibition

Richmor

CPSE2012 in Shenzhen



CPSE2013

10.29-10.31

4 Booth we have

Welcome you !!!



CPSE2012-- Guangdong TV Report-Shenzhen Richmor



第十三届中国国际公共安全博览会



第十三届中国国际公共安全博览会



第十三届中国国际公共安全博览会

Certifications

VERIFICATION OF CONFORMITY	 Verification of Conformity Reference No.: LCC020400009	
	Responsible Party	Shenzhen Richstar Technology Development Co., LTD.
	Address	DP No.40 West Longgang Road, Longhua New District, Shenzhen, China
	Product	Cables
	Model No.	RSC-PCVH, RSC-PCVH, RSC-LPCVH, RSC-LPCVH, RSC-RPVCB, RSC-RPVCB, RSC-LAB, RSC-LAB, RSC-DABS, RSC-DABS, RSC-DABS, RSC-DABS, RSC-HD-CVH, RSC-HD-CVH, RSC-DABS
Trade Mark	Richstar	
Standards	FCC-CRM AT PART 18 Subpart B; EMC EN55024:2008	
<p>Important note:</p> <p>This identity is in conformance with Part 18 of the FCC Rules and Regulations for radio frequency devices. Declaration affixed is subject to the following test conditions: (1) This device may not cause harmful interference, and (2) this device must accept any interference received, including interference that may cause undesired operation. We intend to conform to the applicable FCC Rules and Regulations. The method of testing was in accordance to the most stringent measurement standard available, and that all necessary steps have been followed to assure that all production units of the same equipment will continue to comply with the Federal Communications Commission's requirements.</p>		
<div style="text-align: right;">  Date: April 10, 2012 </div>		
Shenzhen LCS Compliance Testing Laboratory Ltd. * Anping Industrial Park, Pingguo Road, Bao'an Dist., Shenzhen District, Shenzhen Guangdong, China Tel: +86(0)755-26291491 http://www.lcs-test.com Fax: +86(0)755-26291491 Email: sales@lcs-test.com		

VERIFICATION OF CONFORMITY		
	<h2 style="margin: 0;">Verification of Conformity</h2> <p style="margin: 0;">Reference No.: 1701284000719</p>	
	Responsible Party :	Shenzhen Weikuan Technology Development Co., LTD.
	Address :	3F Bay 34 West Longgang Road, Longgang New District, Shenzhen, China
	Product :	Mobile DVR
	Model No. :	WCM-M00000, WCM-M00001, WCM-M00002, WCM-M00003, WCM-M00004, WCM-M00005, WCM-M00006, WCM-M00007, WCM-M00008, WCM-M00009
	Trade Mark :	WIKUON
	Standards :	FCC (PCE) at Part 15 Subpart B, 2011, 47CFR 15.205-2009
	<p>Important note:</p> <p>This device is in-conformance with Part 15 of the FCC Rules and Regulations for radio frequency emission. Operation of this product is subject to the following two conditions:</p> <p>(1) this device may not interfere with other electronics; and (2) this device must accept any interference received, including interference that may cause unusual operation.</p> <p>This device is conform to the applicable FCC Rules and Regulations. The content of labeling was in accordance to the most accurate measurement standards possible, and that all necessary steps have been taken to ensure that all production units of the same equipment will continue to comply with the Federal Communications Commission's requirements.</p>	
		
<p style="margin: 0;">Shenzhen, April 16, 2013</p>		
<p>Shenzhen LCC Compliance Testing Laboratory Ltd. #1, Angang Industrial Park, Tangme Road, Shean New District, Shenzhen, Guangdong, China Tel: 86-755-8358-1200 http://www.LCC-cert.com</p> <p style="text-align: right;">Fax: 86-755-8358-1552 Email: szlcc@lcc-cert.com</p>		

CERTIFICATE OF CONFORMITY		
	CERTIFICATE of Conformity Reference No.: L23-0001029475	
	Applicant:	Shenzhen Resonance Technology Development Co., LTD.
	Address:	12F No.44 West Longgang Road, Longgang New District, Shenzhen, China
	Product:	Mobile DVR
Model(s):	RCM-M0010R, RCM-M0010R, RCM-M0010R, RCM-M0010R, RCM-M0010R, RCM-M0010R, RCM-M0010R, RCM-M0010R	
Trade Mark:	Resonance	
<p>The submitted products have been tested in accordance with the following European Directives:</p> <p>The EMC Directive 2004/108/EC</p> <p>EN 55032: 2015, EN 55035: 2010</p> <p>The tests were performed in normal operation mode. The test results apply only to the particular sample tested and to the specific batch number only. This certificate applies specifically to the sample investigated or to test reference number only.</p> <p>The CE markings as shown below can be affixed on the product after presentation of necessary technical documentation.</p> <p>Other relevant Directives have to be checked.</p>		
<div style="display: flex; justify-content: space-around; align-items: center;">   </div> <p style="text-align: right;">  Date: 10.11.2017 </p>		
Shenzhen LCC Compliance Testing Laboratory Ltd. 12F, Longgang Industrial Park, Longgang New District, Shenzhen, Guangdong, China Tel: (86)755-83071122 Web: www.lcc.com.cn		
Fax: (86)755-83071122 Email: admin@lcc.com.cn		

CERTIFICATE OF CONFORMITY

CERTIFICATE of Conformity

Reference No.: CCB0104008972

Applicant:	Suzhou Runyao Technology Development Co., LTD.
Address:	3F No.8 West Longgang Road, Longtan New District, Suzhou, China
Product:	2 Tablets
Model(s):	RNM-IP310L, RNM-IP310S, RNM-LP310L, RNM-IP310S, RNM-MP310L, RNM-MP310S, RNM-DAL, RNM-HAL, RNM-SAL, RNM-IND, RNM-INS, RNM-ROD, RNM-RSD, RNM-KDS, RNM-BOPSU, RNM-MEDUS, RNM-COAGUR
Tested Item:	Robustness

The submitted products have been tested by us with the latest standards and found to conform with the following European Directives:

The EMC Directive 2004/108/EC

(EN 60950, EN 61010, EN 60335, EN 60730)

The tests were performed in normal operation mode. The test results apply only to the particular sample tested and to the specific tests carried out. This certificate applies specifically to the samples investigated in our test reference number 040.

The CE markings we affixed below can be affixed on the product after presentation of necessary technical documentation.

(Other relevant Directives have to be checked)

April 10, 2013

Shenzhen CCS Consumer Testing Laboratory Ltd.
No. 10, Anqiang Industrial Park, Tongshan,
Guangdong, China
Tel: +86(755) 42620112
<http://www.ccs-test.com>

Fax: +86(755) 42620112
Email: info@ccs-test.com

CERTIFICATE OF CONFORMITY



CERTIFICATE of Conformity

2011050101 Recognition of Manufacturer Declaration

Reference No.: C01-001000270

When asked as specified, the submitted sample complies with the requirements of Commission Decision of 21 July 2005 amending Directive 2011050101

Applicant	Shenzhen Richison Technology Development Co., LTD.
Address	1/F North West Language Road, Langshui New District, Shenzhen, China
Trade Mark	Richison
Product	Camera
Model(s)	RCM-IP210, RCM-IP215, RCM-UP210, RCM-UP215, RCM-SP100, RCM-SP105, RCM-SP150, RCM-SP155, RCM-SP160, RCM-SP165, RCM-SP170, RCM-SP175, RCM-SP180, RCM-SP185, RCM-SP190, RCM-SP195, RCM-SP200, RCM-SP205, RCM-SP210, RCM-SP215, RCM-SP220, RCM-SP225, RCM-SP230, RCM-SP235, RCM-SP240, RCM-SP245, RCM-SP250, RCM-SP255, RCM-SP260, RCM-SP265, RCM-SP270, RCM-SP275, RCM-SP280, RCM-SP285, RCM-SP290, RCM-SP295, RCM-SP300, RCM-SP305, RCM-SP310, RCM-SP315, RCM-SP320, RCM-SP325, RCM-SP330, RCM-SP335, RCM-SP340, RCM-SP345, RCM-SP350, RCM-SP355, RCM-SP360, RCM-SP365, RCM-SP370, RCM-SP375, RCM-SP380, RCM-SP385, RCM-SP390, RCM-SP395, RCM-SP400, RCM-SP405, RCM-SP410, RCM-SP415, RCM-SP420, RCM-SP425, RCM-SP430, RCM-SP435, RCM-SP440, RCM-SP445, RCM-SP450, RCM-SP455, RCM-SP460, RCM-SP465, RCM-SP470, RCM-SP475, RCM-SP480, RCM-SP485, RCM-SP490, RCM-SP495, RCM-SP500, RCM-SP505, RCM-SP510, RCM-SP515, RCM-SP520, RCM-SP525, RCM-SP530, RCM-SP535, RCM-SP540, RCM-SP545, RCM-SP550, RCM-SP555, RCM-SP560, RCM-SP565, RCM-SP570, RCM-SP575, RCM-SP580, RCM-SP585, RCM-SP590, RCM-SP595, RCM-SP600, RCM-SP605, RCM-SP610, RCM-SP615, RCM-SP620, RCM-SP625, RCM-SP630, RCM-SP635, RCM-SP640, RCM-SP645, RCM-SP650, RCM-SP655, RCM-SP660, RCM-SP665, RCM-SP670, RCM-SP675, RCM-SP680, RCM-SP685, RCM-SP690, RCM-SP695, RCM-SP700, RCM-SP705, RCM-SP710, RCM-SP715, RCM-SP720, RCM-SP725, RCM-SP730, RCM-SP735, RCM-SP740, RCM-SP745, RCM-SP750, RCM-SP755, RCM-SP760, RCM-SP765, RCM-SP770, RCM-SP775, RCM-SP780, RCM-SP785, RCM-SP790, RCM-SP795, RCM-SP800, RCM-SP805, RCM-SP810, RCM-SP815, RCM-SP820, RCM-SP825, RCM-SP830, RCM-SP835, RCM-SP840, RCM-SP845, RCM-SP850, RCM-SP855, RCM-SP860, RCM-SP865, RCM-SP870, RCM-SP875, RCM-SP880, RCM-SP885, RCM-SP890, RCM-SP895, RCM-SP900, RCM-SP905, RCM-SP910, RCM-SP915, RCM-SP920, RCM-SP925, RCM-SP930, RCM-SP935, RCM-SP940, RCM-SP945, RCM-SP950, RCM-SP955, RCM-SP960, RCM-SP965, RCM-SP970, RCM-SP975, RCM-SP980, RCM-SP985, RCM-SP990, RCM-SP995, RCM-SP1000, RCM-SP1005, RCM-SP1010, RCM-SP1015, RCM-SP1020, RCM-SP1025, RCM-SP1030, RCM-SP1035, RCM-SP1040, RCM-SP1045, RCM-SP1050, RCM-SP1055, RCM-SP1060, RCM-SP1065, RCM-SP1070, RCM-SP1075, RCM-SP1080, RCM-SP1085, RCM-SP1090, RCM-SP1095, RCM-SP1100, RCM-SP1105, RCM-SP1110, RCM-SP1115, RCM-SP1120, RCM-SP1125, RCM-SP1130, RCM-SP1135, RCM-SP1140, RCM-SP1145, RCM-SP1150, RCM-SP1155, RCM-SP1160, RCM-SP1165, RCM-SP1170, RCM-SP1175, RCM-SP1180, RCM-SP1185, RCM-SP1190, RCM-SP1195, RCM-SP1200, RCM-SP1205, RCM-SP1210, RCM-SP1215, RCM-SP1220, RCM-SP1225, RCM-SP1230, RCM-SP1235, RCM-SP1240, RCM-SP1245, RCM-SP1250, RCM-SP1255, RCM-SP1260, RCM-SP1265, RCM-SP1270, RCM-SP1275, RCM-SP1280, RCM-SP1285, RCM-SP1290, RCM-SP1295, RCM-SP1300, RCM-SP1305, RCM-SP1310, RCM-SP1315, RCM-SP1320, RCM-SP1325, RCM-SP1330, RCM-SP1335, RCM-SP1340, RCM-SP1345, RCM-SP1350, RCM-SP1355, RCM-SP1360, RCM-SP1365, RCM-SP1370, RCM-SP1375, RCM-SP1380, RCM-SP1385, RCM-SP1390, RCM-SP1395, RCM-SP1400, RCM-SP1405, RCM-SP1410, RCM-SP1415, RCM-SP1420, RCM-SP1425, RCM-SP1430, RCM-SP1435, RCM-SP1440, RCM-SP1445, RCM-SP1450, RCM-SP1455, RCM-SP1460, RCM-SP1465, RCM-SP1470, RCM-SP1475, RCM-SP1480, RCM-SP1485, RCM-SP1490, RCM-SP1495, RCM-SP1500, RCM-SP1505, RCM-SP1510, RCM-SP1515, RCM-SP1520, RCM-SP1525, RCM-SP1530, RCM-SP1535, RCM-SP1540, RCM-SP1545, RCM-SP1550, RCM-SP1555, RCM-SP1560, RCM-SP1565, RCM-SP1570, RCM-SP1575, RCM-SP1580, RCM-SP1585, RCM-SP1590, RCM-SP1595, RCM-SP1600, RCM-SP1605, RCM-SP1610, RCM-SP1615, RCM-SP1620, RCM-SP1625, RCM-SP1630, RCM-SP1635, RCM-SP1640, RCM-SP1645, RCM-SP1650, RCM-SP1655, RCM-SP1660, RCM-SP1665, RCM-SP1670, RCM-SP1675, RCM-SP1680, RCM-SP1685, RCM-SP1690, RCM-SP1695, RCM-SP1700, RCM-SP1705, RCM-SP1710, RCM-SP1715, RCM-SP1720, RCM-SP1725, RCM-SP1730, RCM-SP1735, RCM-SP1740, RCM-SP1745, RCM-SP1750, RCM-SP1755, RCM-SP1760, RCM-SP1765, RCM-SP1770, RCM-SP1775, RCM-SP1780, RCM-SP1785, RCM-SP1790, RCM-SP1795, RCM-SP1800, RCM-SP1805, RCM-SP1810, RCM-SP1815, RCM-SP1820, RCM-SP1825, RCM-SP1830, RCM-SP1835, RCM-SP1840, RCM-SP1845, RCM-SP1850, RCM-SP1855, RCM-SP1860, RCM-SP1865, RCM-SP1870, RCM-SP1875, RCM-SP1880, RCM-SP1885, RCM-SP1890, RCM-SP1895, RCM-SP1900, RCM-SP1905, RCM-SP1910, RCM-SP1915, RCM-SP1920, RCM-SP1925, RCM-SP1930, RCM-SP1935, RCM-SP1940, RCM-SP1945, RCM-SP1950, RCM-SP1955, RCM-SP1960, RCM-SP1965, RCM-SP1970, RCM-SP1975, RCM-SP1980, RCM-SP1985, RCM-SP1990, RCM-SP1995, RCM-SP2000, RCM-SP2005, RCM-SP2010, RCM-SP2015, RCM-SP2020, RCM-SP2025, RCM-SP2030, RCM-SP2035, RCM-SP2040, RCM-SP2045, RCM-SP2050, RCM-SP2055, RCM-SP2060, RCM-SP2065, RCM-SP2070, RCM-SP2075, RCM-SP2080, RCM-SP2085, RCM-SP2090, RCM-SP2095, RCM-SP2100, RCM-SP2105, RCM-SP2110, RCM-SP2115, RCM-SP2120, RCM-SP2125, RCM-SP2130, RCM-SP2135, RCM-SP2140, RCM-SP2145, RCM-SP2150, RCM-SP2155, RCM-SP2160, RCM-SP2165, RCM-SP2170, RCM-SP2175, RCM-SP2180, RCM-SP2185, RCM-SP2190, RCM-SP2195, RCM-SP2200, RCM-SP2205, RCM-SP

CERTIFICATE OF CONFORMITY



CERTIFICATE of Conformity

301769003-Recognition of Hazardous Substances

Reference No.: L301304-100818

When tested as specified, the submitted sample complies with the requirements of Commission Decision of 21 July 2011 amending Directive 2011/65/EU:

Applicant:	Shenzhen Richison Technology Development Co., Ltd.
Address:	3F No.84 West Longgang Road, Longgang New District, Shenzhen, China
Trade Mark:	Richison
Product:	Memory Stick
Model(s):	MSM-MC9000, MSM-MC9000S, MSM-MC9000L, MSM-MC9000SL, MSM-MC9000T, MSM-MC9000S, MSM-MC9000

This test report is issued to the Company subject to its General Conditions of Service printed hereon. Attention is drawn to the limitations of liability, indemnification and jurisdiction clause set forth herein. This report drawn in this test report only to the company, tested unless otherwise stated. This Test Report cannot be reproduced, copied in full, without prior written permission of the Company.

Other relevant documents have to be obtained.

RoHS




 10/10/2018
 April 10, 2018

Shenzhen L30 Compliance Testing Laboratories Ltd
 10/F, Industrial Park, Tonghe Road, Xixiang East, Baoan District, Shenzhen,
 Guangdong, China
 Tel: +86755 2666 6666
 www.l30.com.cn

Fax: +86755 2666 6666
 Email: service@l30.com.cn

Skype:rcmcctvsales5