

# Portátil Digital Video Recorder Polícia pessoais

Modelo: RCM-SP5800

## Característica principal:

- 1 DVR portátil para Pessoal
- 2 Suporte Wi-Fi, 3G, GPS função
- 3 Suporte vigilância em tempo real
4. suporta SD substituídos por dia
5. Suporta backup e atualizar com cartão SD
6. Auto recorvery após falha eléctrica

## Fotos:





<b>Vídeo</b>	Entrada de vídeo	Built-in lente da câmera, ângulo de visibilidade: 70 °, sensor CMOS
	OSD	Tempo & amp; data, ID do dispositivo, GPS, etc
	Compressão	H.264. Hisilicon alta processador de desempenho é adotado.
	Resolução de vídeo	VGA por padrão, QVGA opcional
	Taxa de Vídeo Bit QVGA	QVGA: 400Kbps ~ 1.5Mbps, 4 níveis de taxa de bits opcional
	VGA vídeo taxa de bits	VGA: 1000kbps ~ 2Mbps, 4 níveis de taxa de bits opcional
	Função de visualização	Tempo real, gravação de vídeo pré-visualização
	Fluxo dual	Suporte
<b>Áudio</b>	A entrada de áudio	Built-in MIC
	Saída de áudio	Alto-falante embutido, & gt; 1W
	Compressão	G.726
<b>Gravação</b>	Mídia de armazenamento	Cartão Micro-SD, suporte 1G ~ 32G
	Formato de arquivo / sistema	Formato de arquivo de registro ASF, Sistema de arquivos FAT32
	Modo de gravação	Gravação de inicialização padrão, o suporte de gravação manual
	Busca de gravação	Arquivos de vídeo de gravação de Pesquisa por hora, tipo, etc
	Reprodução de gravação	Apoio ao avanço rápido, rápido para trás, play, pause, suporte 2, 4, 8, 16 vezes a velocidade de avanço rápido ou rápido para trás, suporta a reprodução de arquivo por vez
<b>USB Interface</b>	Anfitrião Acesso	Pode Expandir One For Disk USB Backup
<b>Interface de rede</b>	A transmissão sem fio	Built-in 3G sem fio módulo de transmissão, WCDMA, CDMA2000, sistema TD-SCDMA opcional; Compatível com o GPRS, EDGE;
<b>Estender interface</b>	Intercom	Pode Expandir Intercom Módulo Dentro
<b>Parâmetros de tela</b>	Tamanho	2,4 polegadas
	Tipo	TFT
	Resolução	480 * 234
<b>Atualização</b>	Atualização do sistema	Apoio às Micro SD-card atualização
<b>Ambiente de trabalho</b>	Temperatura	-20 ° C a + 50 ° C
	Umidade	20% a 80%
<b>Dimensão</b>	Dispositivo principal	50 (W) x90 (H) x28 (D) mm
	Dispositivo auxiliar	70 (W) x110 (H) x28 (D) mm
<b>Peso</b>	Dispositivo principal	Peso líquido: 95g, Gross peso: 307.5g
	Dispositivo auxiliar	Peso líquido: 238g, Gross peso: 352g

**Nossa aplicação de software CMS:**

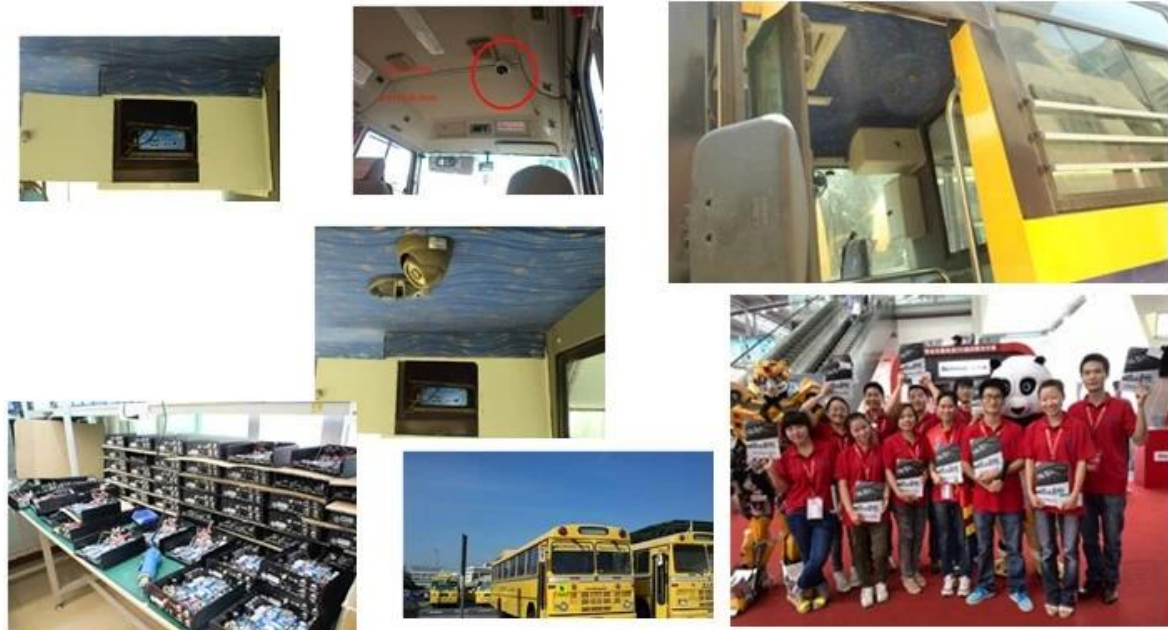


**Para PC com Windows Vigilância em tempo real**

**Para IOS & Fiscalização do telefone Android OS mobile**



**Noosso projeto DVR móvel para veículos**



**Certificação:**

**VERIFICATION OF CONFORMITY**

**Verification of Conformity**  
Reference No.: LC0130402870

Responsible Party: Shenzhen Reaktor Technology Development Co., LTD.  
Address: 27 No.84 West Longgang Road, Longhua New District, Shenzhen, China  
Product: Camera  
Model No.: RCM-PC20L, RCM-PC20L, RCM-LP20L, RCM-PC20L, RCM-AP20L, RCM-AP20L, RCM-30L, RCM-30L, RCM-40L, RCM-40L, RCM-50L, RCM-50L, RCM-60L, RCM-60L, RCM-70L, RCM-70L, RCM-80L, RCM-80L, RCM-90L, RCM-90L  
Trade Mark: Reaktor  
Standards: FCC CFR 47 PART 15 Subpart B, 2011, ANSI C63.4-2008

**Important note:**  
This device is in compliance with Part 15 of the FCC Rules and Regulations for radio frequency devices. Operation of the product is subject to the following two conditions:  
(1) This device may not cause harmful interference, and (2) this device must accept any interference received, including interference that may cause undesired operation.  
The EMC Directive 2014/53/EU  
The test results were performed in normal operation mode. The test results apply only to the particular sample tested and to the specific test method used. This certificate applies specifically to the sample investigated and not the reference number only.  
The CE marking is shown below and is affixed to the product after preparation of necessary technical documentation.  
Clear technical documents have to be obtained.

Shenzhen LCC Compliance Testing Laboratory Ltd.  
17, Jingqian Industrial Park, Tengda Road, Bao'an District, Shenzhen, Guangdong, China  
Tel: 86755-83291122 Fax: 86755-83291122  
http://www.lcc-test.com Email: admin@lcc-test.com

**VERIFICATION OF CONFORMITY**

**Verification of Conformity**  
Reference No.: LC0130402870

Responsible Party: Shenzhen Reaktor Technology Development Co., LTD.  
Address: 27 No.84 West Longgang Road, Longhua New District, Shenzhen, China  
Product: Mobile DVR  
Model No.: RCM-M200L, RCM-M200L, RCM-M200L, RCM-M200L, RCM-M200L, RCM-M200L, RCM-M200L, RCM-M200L, RCM-M200L, RCM-M200L  
Trade Mark: Reaktor  
Standards: FCC CFR 47 PART 15 Subpart B, 2011, ANSI C63.4-2008

**Important note:**  
This device is in compliance with Part 15 of the FCC Rules and Regulations for radio frequency devices. Operation of the product is subject to the following two conditions:  
(1) This device may not cause harmful interference, and (2) this device must accept any interference received, including interference that may cause undesired operation.  
The EMC Directive 2014/53/EU  
The test results were performed in normal operation mode. The test results apply only to the particular sample tested and to the specific test method used. This certificate applies specifically to the sample investigated and not the reference number only.  
The CE marking is shown below and is affixed to the product after preparation of necessary technical documentation.  
Clear technical documents have to be obtained.

Shenzhen LCC Compliance Testing Laboratory Ltd.  
17, Jingqian Industrial Park, Tengda Road, Bao'an District, Shenzhen, Guangdong, China  
Tel: 86755-83291122 Fax: 86755-83291122  
http://www.lcc-test.com Email: admin@lcc-test.com

**CERTIFICATE OF CONFORMITY**  
Reference No.: LC0130402870

Applicant: Shenzhen Reaktor Technology Development Co., LTD.  
Address: 27 No.84 West Longgang Road, Longhua New District, Shenzhen, China  
Product: Mobile DVR  
Model No.: RCM-M200L, RCM-M200L, RCM-M200L, RCM-M200L, RCM-M200L, RCM-M200L, RCM-M200L, RCM-M200L, RCM-M200L, RCM-M200L  
Trade Mark: Reaktor

The submitted products have been tested in accordance with the latest standards and found in compliance with the following European Directives:  
The EMC Directive 2014/53/EU  
EN 55032, EN 55035, EN 55034, EN 55035  
The test results were performed in normal operation mode. The test results apply only to the particular sample tested and to the specific test method used. This certificate applies specifically to the sample investigated and not the reference number only.  
The CE marking is shown below and is affixed to the product after preparation of necessary technical documentation.  
Clear technical documents have to be obtained.

Shenzhen LCC Compliance Testing Laboratory Ltd.  
17, Jingqian Industrial Park, Tengda Road, Bao'an District, Shenzhen, Guangdong, China  
Tel: 86755-83291122 Fax: 86755-83291122  
http://www.lcc-test.com Email: admin@lcc-test.com

**CERTIFICATE OF CONFORMITY**

**CERTIFICATE of Conformity**  
Reference No.: LC0130402870

Applicant: Shenzhen Reaktor Technology Development Co., LTD.  
Address: 27 No.84 West Longgang Road, Longhua New District, Shenzhen, China  
Product: Camera  
Model No.: RCM-PC20L, RCM-PC20L, RCM-LP20L, RCM-PC20L, RCM-AP20L, RCM-AP20L, RCM-30L, RCM-30L, RCM-40L, RCM-40L, RCM-50L, RCM-50L, RCM-60L, RCM-60L, RCM-70L, RCM-70L, RCM-80L, RCM-80L, RCM-90L, RCM-90L  
Trade Mark: Reaktor

The submitted products have been tested in accordance with the latest standards and found in compliance with the following European Directives:  
The EMC Directive 2014/53/EU  
EN 55032, EN 55035, EN 55034, EN 55035  
The test results were performed in normal operation mode. The test results apply only to the particular sample tested and to the specific test method used. This certificate applies specifically to the sample investigated and not the reference number only.  
The CE marking is shown below and is affixed to the product after preparation of necessary technical documentation.  
Clear technical documents have to be obtained.

Shenzhen LCC Compliance Testing Laboratory Ltd.  
17, Jingqian Industrial Park, Tengda Road, Bao'an District, Shenzhen, Guangdong, China  
Tel: 86755-83291122 Fax: 86755-83291122  
http://www.lcc-test.com Email: admin@lcc-test.com

**CERTIFICATE OF CONFORMITY**

**CERTIFICATE of Conformity**  
2011/65/EU Restriction of Hazardous Substances  
Reference No.: LC0130402870

When tested as specified, the submitted sample complies with the requirements of Commission Decision of 27 July 2011 amending Directive 2011/65/EU.

Applicant: Shenzhen Reaktor Technology Development Co., LTD.  
Address: 27 No.84 West Longgang Road, Longhua New District, Shenzhen, China  
Trade Mark: Reaktor  
Product: Camera  
Model No.: RCM-PC20L, RCM-PC20L, RCM-LP20L, RCM-PC20L, RCM-AP20L, RCM-AP20L, RCM-30L, RCM-30L, RCM-40L, RCM-40L, RCM-50L, RCM-50L, RCM-60L, RCM-60L, RCM-70L, RCM-70L, RCM-80L, RCM-80L, RCM-90L, RCM-90L

The test results are issued by the Company subject to the General Conditions of Service printed on the back of this report. The results shown in this test report refer only to the particular tested sample unless otherwise stated. This Test Report cannot be reproduced in any form without prior written permission of the Company.  
Clear technical documents have to be obtained.

Shenzhen LCC Compliance Testing Laboratory Ltd.  
17, Jingqian Industrial Park, Tengda Road, Bao'an District, Shenzhen, Guangdong, China  
Tel: 86755-83291122 Fax: 86755-83291122  
http://www.lcc-test.com Email: admin@lcc-test.com

**CERTIFICATE OF CONFORMITY**

**CERTIFICATE of Conformity**  
2011/65/EU Restriction of Hazardous Substances  
Reference No.: LC0130402870

When tested as specified, the submitted sample complies with the requirements of Commission Decision of 27 July 2011 amending Directive 2011/65/EU.

Applicant: Shenzhen Reaktor Technology Development Co., LTD.  
Address: 27 No.84 West Longgang Road, Longhua New District, Shenzhen, China  
Trade Mark: Reaktor  
Product: Mobile DVR  
Model No.: RCM-M200L, RCM-M200L, RCM-M200L, RCM-M200L, RCM-M200L, RCM-M200L, RCM-M200L, RCM-M200L, RCM-M200L, RCM-M200L

The test report is issued by the Company subject to the General Conditions of Service printed on the back of this report. The results shown in this test report refer only to the particular tested sample unless otherwise stated. This Test Report cannot be reproduced in any form without prior written permission of the Company.  
Clear technical documents have to be obtained.

Shenzhen LCC Compliance Testing Laboratory Ltd.  
17, Jingqian Industrial Park, Tengda Road, Bao'an District, Shenzhen, Guangdong, China  
Tel: 86755-83291122 Fax: 86755-83291122  
http://www.lcc-test.com Email: admin@lcc-test.com

**Produtos relacionados:**



SD Mobile DVR with 3G GPS



SD Mobile DVR with WIFI 3G GPS G-Sensor

**Cooperação Termos:**

**Condições de pagamento:** T / T, Western Union, MoneyGram, Paypal

**Prazo de entrega:** Dentro de 5 dias úteis após a confirmar o pagamento.

**Garantia:** 12 meses

**Maneira do transporte:** DHL, UPS, FedEx, EMS, TNT, etc

**Embalagem maneiras:**



Richmor Brand Package



Standard Package

**Serviço pós-venda:**

- 1 Depois você recebe nossos produtos, nós vamos ajudá-lo a perceber como usá-lo.
2. Oferta você o software se você utilizar o nosso DVR móvel.
3. Doze meses de garantia
- 4 Durante a nossa garantia, se você tiver qualquer problema, nós podemos ajudá-lo a resolvê-lo.
- 5 Durante a nossa garantia, você pode voltar para nós repará-lo.

**Observação: Todos retornos qualificados / substituição deve ser guiada por nós, ou não vai aceitar o seu retorno sem nos informar com antecedência.**

**Sobre nós:**



# Richmor

## OEM & ODM Service

### Brasil World Cup Supplier



Inner Training after study from Alibaba in July



Technical Training For Fast Response to Customer Richmor 锐驰曼



lecturer for Execution