

Products Description

AI Chipset Strong Algorithm

This model supports *DSM* (driver status monitoring) and *ADAS* (advanced driving assistant system). *BSD* (blind spot detection) is under development. Will be a smart mini tool for your fleet management.



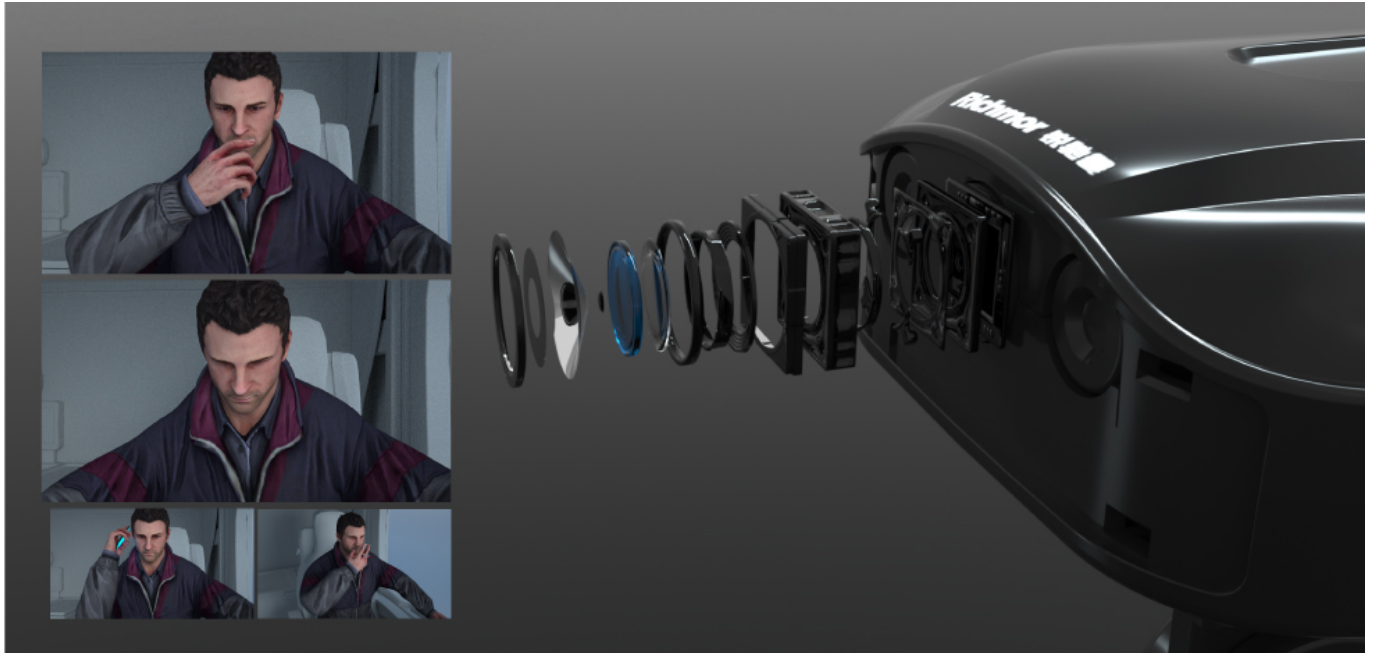
Supports Max 4CH Video Recording

DSM camera built-in, supports 2~3 external cameras, comprehensive monitoring with AI function.



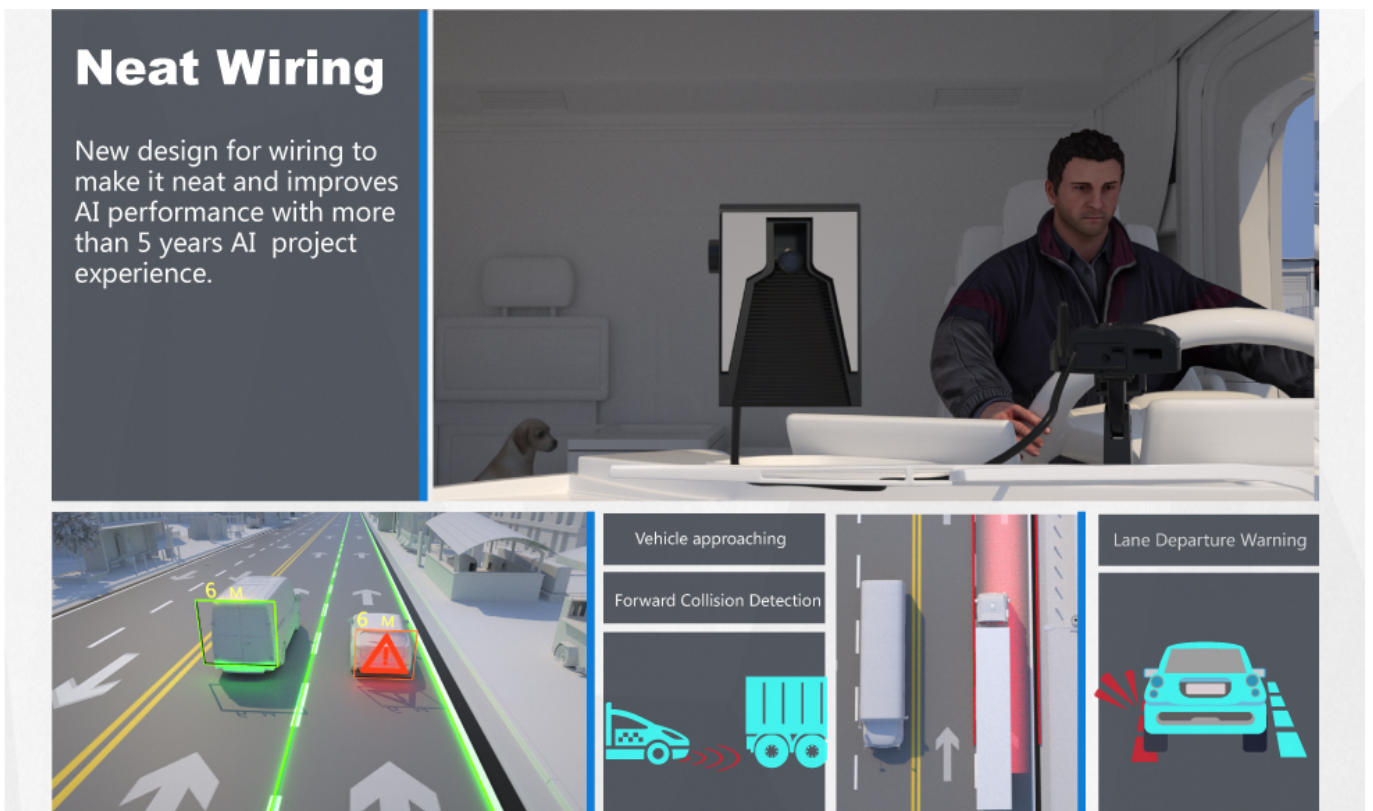
Integrated DSM camera & DSM algorithm

Dangerous driving behaviors detection includes Fatigue(eye closed, yawning), Distraction(looking left or right for a while), Smoking, Making a call, driver abnormality, etc.



Integrated ADAS algorithm

ADAS function for optional. Once connect to ADAS camera, supports FCW (forward collision warning), HMW (headway monitoring), LDW (lane departure warning), and PCW (pedestrian collision warning).



Driver Facial Recognition



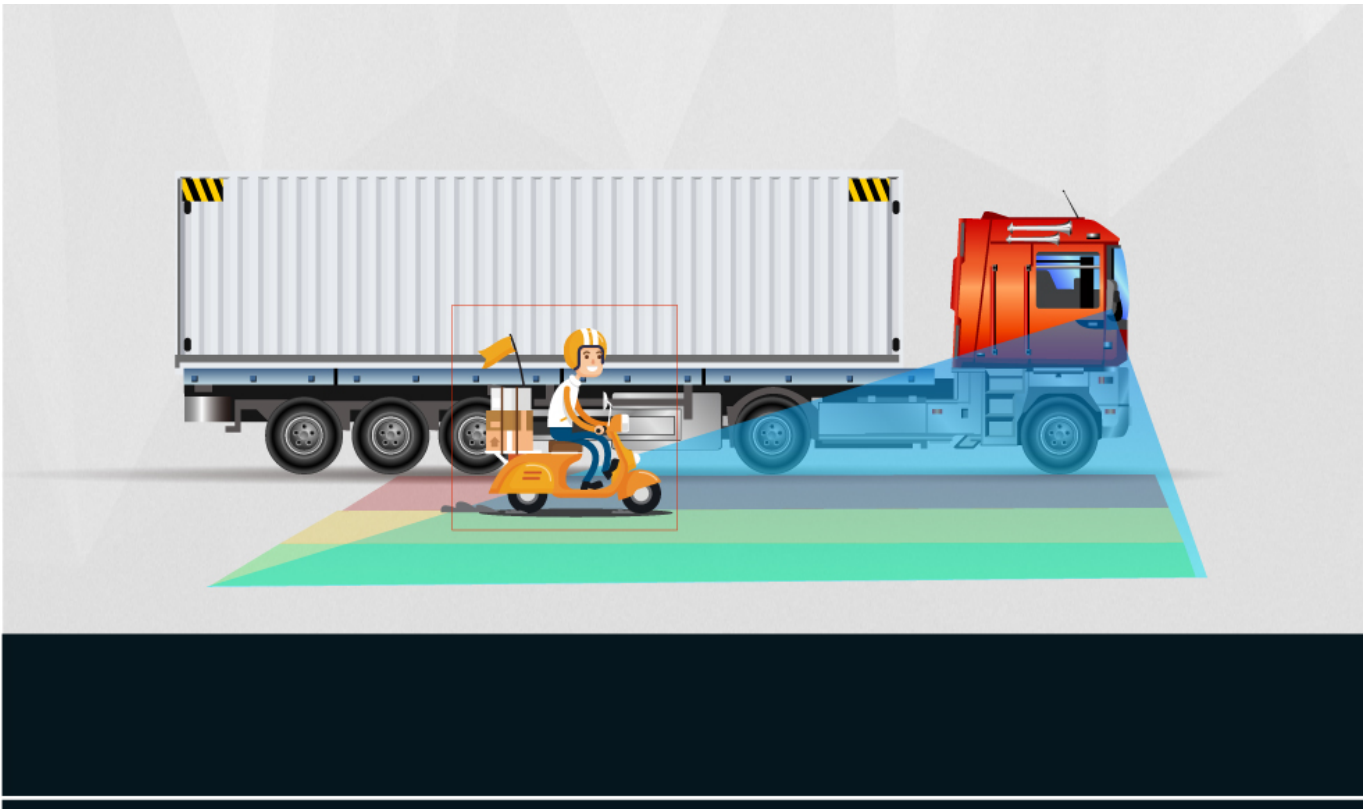
Driver face recognition

Driver ID Face recognition benefits to the attendance of fleet management: avoid illegally replacing shifts, non-compliant drivers, to regulate drivers and operation management.



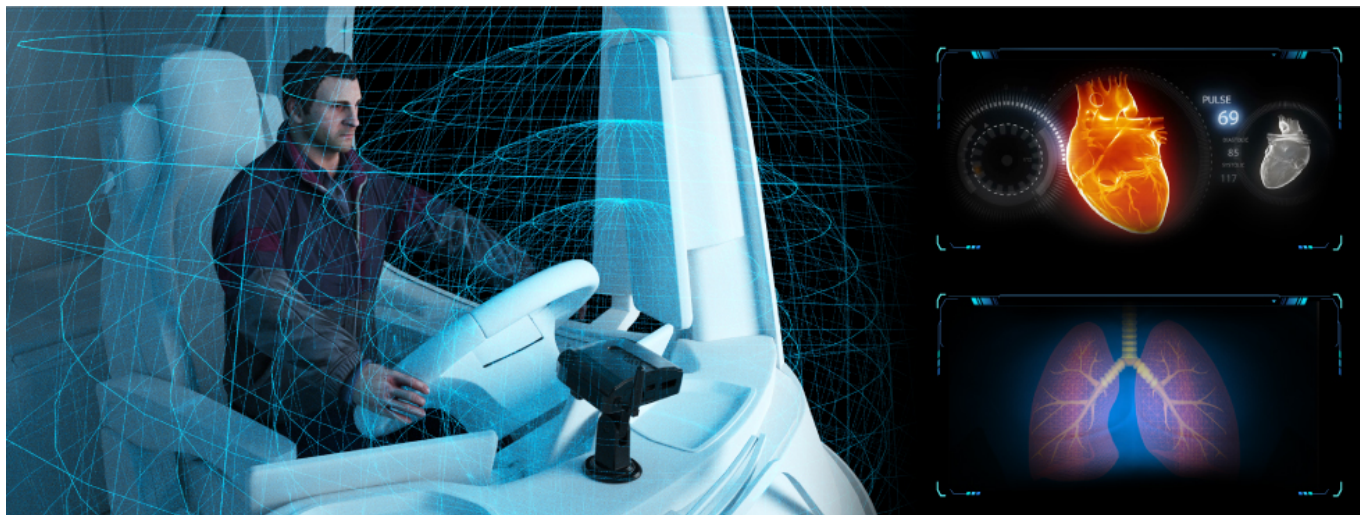
Optional BSD Blind Spot Detection

Connect BSD camera for blind area detection and voice reminder: pedestrians, motorcyclist, bicyclist detection. Voice reminder inside and outside with a light flashing speaker. (This function is under development. Contact salesperson for confirmation~)



Optional Driver Physiological State Detection

Optional to integrate the radar which detects and analyses driver's heart beat and breathe. The most effective way to monitor driver state with video algorithm DSM.



4G + GPS + G-sensor + ADAS + DSM + Speaker + MIC

Super mini size, easy installation and short wiring design to save time and labor cost.



Dual-SD card recording, Seamless loop recording

Dual SD card storage, max 512GB each,. Support hot swap.



WIFI APP-Check

Optional WIFI, for App checking and configuration. Convenient for device operation and maintenance.



Product Parameters

Operation system	Linux
Network type	3G□4G
DSM cam	HD 720P cam
Other cam	HD 720P/1080p cam
Position	GPS/BD
WiFi	2.4G□IEEE 802.11b/g/n
Speaker and MIC	YES
G-sensor	3-axis acceleration sensor
Shut Down Mode	ACC OFF; Delay mode; ultra-low power sleep
Working temperature	-40°C~70°C
Storage temperature	-40°C-85°C

Company Profile

Shenzhen Richmor Technology Development Co., Ltd. is a TOP high-tech enterprise/

manufacturer specialized in digital and intelligent mobile video surveillance products, with rich experiences for developing, producing and selling over 13 years. Product Mainly includes 3G 4G SD card/HDD mobile DVRs, ADAS DSM BSD AI mobile DVRs, MINI DVRs, HD vehicle camera etc. As a professional manufacturer, we oncentrate ourselves on providing customers with most advanced technologies and products with highest quality.

01. Our company



02. Office area

03. Service team



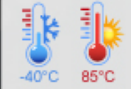
04. Factory Photos

Industrial Hisilicon 3520D image processor chip

Choose the electronic material of industrial grade specification, ensure the life of the component and the stability of the whole machine.

Adopt low heat resistance aluminum profile to make equipment shell, strong and durable, protect heat dissipation.

Temperature rating



High quality image processing



International brand components



Industrial design

