

Products Description

Ride-hailing/Taxi Fleet management

Mini HD dual-len dashcam



2CH 1080P



4G



BD/GPS



IO alarm



Intercom



WiFi AP



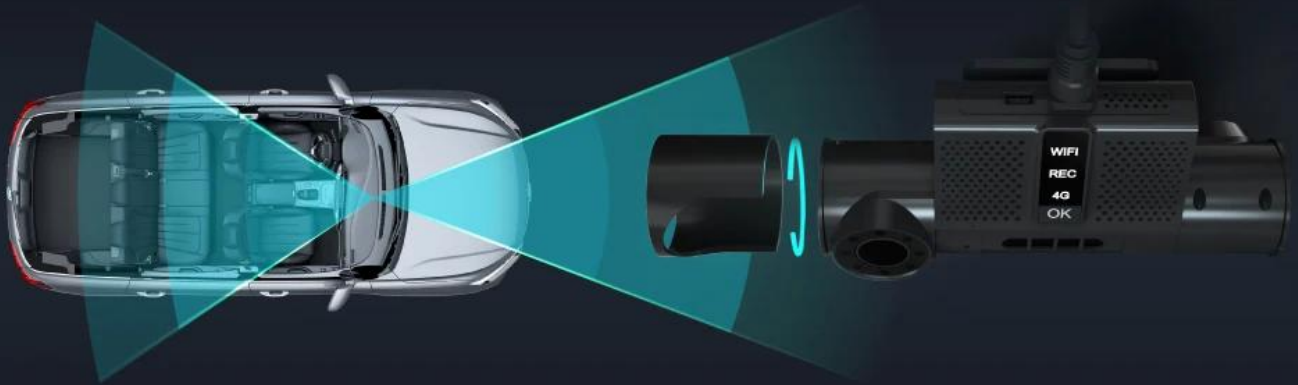
G-Sensor



Mini and Easy Installation

Just need to paste the device to windshield with 3M glue, save time and labor cost.

HD recording Dual 1080P



Front and cabin view, wide-angle lens. Lens can be adjusted 180°vertically, then fixed by structure.

Pretty Night Vision

Cabin len with IR, support viewing at night.



Mini All-in-One Design

Mental and ABS material as case, delicate, mini and firm. Industrial-level solution, reliable electromagnetic compatibility.



4G Remote Transmission

Professional fleet management softwares help you monitoring vehicles remotely through PC or mobile phone.



Automatic Alarm

Integrated G-SENSOR, supporting automatic alarms to platform for abnormal shocks, collision, rollover, etc.

Loop recording

Advanced loop recording technology, make sure enough space for recording.



G-Sensor

When vehicle get hit, device snaps automatically.

Anti-Thief Mode

Device will wake to take photo and send to APP to inform the owner when it get shocks under this mode.



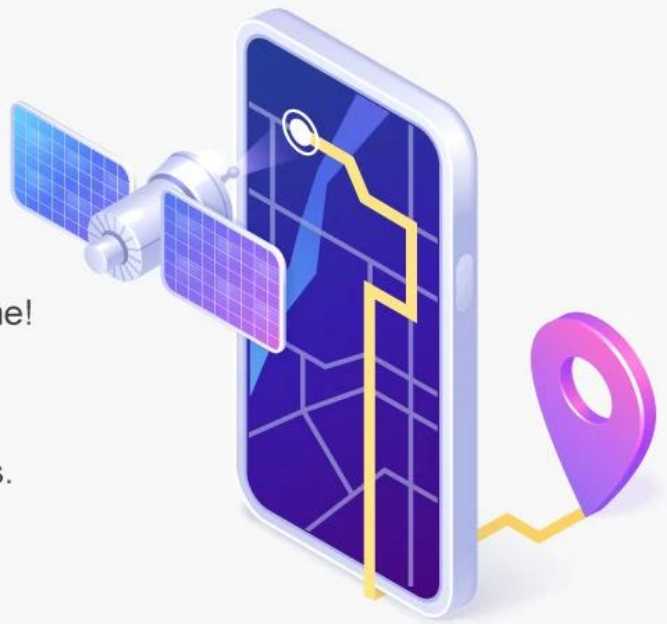
Time-lapse video

1 frame per second recording, low power consumption under this mode.

GPS/BD

Integrated GPS/BD,
tracking your vehicles at any time!

Support routine management,
max save 16 routines and areas.



Panic Button

Integrated sound pick up and speaker, support voice recording and intercom,
support panic button for sending alarms and photos.



voice record
and intercom

WIFI Hotspot

AP mode, support max8 devices at a time.
Support phone connecting WIFI to do setting.



Applications Suitable for Ride-Hailing car/ uber/taxi, van, etc.



Product Parameters

| | |
|---------------------------|--|
| Product name | Dual len 1080P HD dashcam MDVR |
| Dual Len | Supports, front len 1080P, reverse len 1080P |
| Angle of len | Ajustable, 180 degree vertical |
| 4G | Yes |
| Communication Frequency | TDD-LTE: B38/B39/B40/B41 FDD-LTE: B1/B3/B8 WCDMA: B1 |
| GPS | Yes |
| WiFi | Yes |
| Fleet management Platform | Free |
| Speaker | 8Ω, 1W, with audio cavity |
| Microphone | Single microphone, support echo and noise elimination |
| G-Sensor | 3-axis acceleration sensor |
| USB | Mini USB*1, support local upgrade or data backup, expandable external digital camera |
| Panic button | Mini panic button along with |
| SIM card slot | SIM card slot*1 (MICRO SIM) |

| | |
|---------------------|--|
| TF card slot | TF card slot (For recording video) |
| Button | 1 upgrade button, long press to upgrade |
| Indicator light | 3 |
| Power input | 5-30V wide voltage input |
| Working temperature | -30°C~70°C |
| Size and weight | length: 115mm; max width: 57.5mm; thickness: 40mm. |
| Application | Taxi / Car / Online-Hailing / Van, etc. |

Company Profile

Shenzhen Richmor Technology Development Co., Ltd. is a TOP high-tech enterprise/ manufacturer specialized in digital and intelligent mobile video surveillance products, with rich experiences for developing, producing and selling over 13 years. Product Mainly includes 3G 4G SD card/HDD mobile DVRs, ADAS DSM BSD AI mobile DVRs, MINI DVRs, HD vehicle camera etc. As a professional manufacturer, we oncentrate ourselves on providing customers with most advanced technologies and products with highest quality.

