

Product Description

RCM-MDR7104

1. Real time HD video record, **720p/D1/HD1/CIF** optional, video quality adjustable;
2. HDD+SD card record(128GB SD card)**shockproof design** protect data lost from shock&dust;
3. **Special file predistribution** function, solve the file fragmentation of disk re-writing;
4. **ACC delay** (max support 24 hours delay) ;
5. Support **SMS**/client check and modify device configuration;
6. Support manual ,overspeed /lowspeed,parking,motiondetection,cross the border,route deviation fatigue driving,dangerous driving and lane departure, detection alarm;
7. 8CH alarm input (door open/close;lighting;turning;braking;reversing etc),2CH alarm output;multi-alarm linkage;
8. Support local picture capture when alarm trigger;
9. Support **wireless** AP hotspot;
10. Support SD card upgrading/**OTA** auto upgrading;
11. Support **mobile phone remote** monitor phone calling function;
12. Support **PTZ** control, pos,fuel sensor, led advertisement;Support 1CH **CAN,OBD**;

Item	Parameter	
OS	Linux	
Language	English/Chinese/Customized	
Video Compression	H.264 Compression	
OSD	Overlays information such as date time and vehicle ID	
GUI	Graphical User Interface	Setup system parameters with the remote control.
Video Record System	Video Input	4CH 720P AHD input/SD input/mixed input,aviation connector, 1.0Vp-p, 75Ω
	Video Onput	2CH CVBS+ VGA output for optional, 1.0Vp-p,75Ω,
		Aviation,Support 1CH Full Screen,4CH Screen view
	Resolution	720P/D1/HD1/CIF, MAX:4 channels 720P ; 4 channels D1
	Image Quality	0-7 levels, 0 is the highest level.
	Preview	Support 1 channel and 4 channels preview.,Support Manual/Alarm Trigger full screen preview
	Video Standard	PAL: 100f/s , CCIR625 line,50field; NTSC: 120f/s, CCIR525 line,60field; CIF: 256Kbps ~ 1.5Mbps, 8 level video quality optional; HD1: 600Kbps ~ 2.5Mbps, 8 level video quality optional; D1: 800Kbps ~ 3Mbps, 8 level video quality optional; 720P: 4Mbps-6Mbps, multi level video quality optional

	Record Mode	The default setting is auto recording after power on. Timed recording, alarm trigger recording and manual recording are supported.
Audio	Audio Input	4CH Aviation Plug Input
	Audio Output	2CH,headphone connect at front panel, BNC Connect on Back panel
	Compression	G.726 compression, 8KB/s speed
Alarm Input		7CH Alarm Input,1CH AD Input,impulse speed input,Alarm Linkage
Alam output		2CH Alarm Output,Support Light/Sound alarm sensor,Oil/Power cut off
Interface		3CH RS232, POS/Fuel Sensor/LED Advertisement Connection
		2CH 485 Interface,Connect PTZ Camera
		2CH CAN interface
Wireless Transmission		Built in 4G module optional, TDD-LTE, FDD-LTE
		Support Built in 3G transmission,, WCDMA, CDMA2000,GPRS, EDGE;
GPS Position		Support Built GPS/BD Module
Storage	HDD	Max 2.5" 2TB HDD
	SD Card	Max 128GB SD Card Mirror Recording Keep Data Safety
	Update	Support USB Updating, SD Card Updating,OTA Remote Updating
	File Format	H.264
	File System	Special FAT32 File System
	USB	USB Interface on Front Panel for data back up by U Disk,Hard Disk

Record Replay	Video Search	Search By Record Time/Record Type etc
	Playback	Max support 4CH Replay /Stop/Fast/Slow at same timeSupport forward and backward play at the speed of: x 2,x4,x8,x16.
Security		User/Admin 2 Level Different Password
Optional Functions	Voice Call	Support voice call each other
	Serial Expand	Support LED Advertisement Panel、 Oil Sensor、 POS、 Bus Station Broadcaster、 Car OBD,ect.external device
Voltage & Power	Power Management	Wide Voltage.Support Timed/Delay off
	Input Voltage	DC:+6V - +36V
	Output Voltage	+12V 1.5A, +5V 1.5A
	Power	Working <5W
	Temperature	-20℃ - +70℃
Working Environment	Humidity	20% - 80%
	Size	200 (D) * 187 (W) * 62 (H) mm
Ohters	Weight	1.90 Kg



Our Company



Factory

Our Factory



Team

Our Team

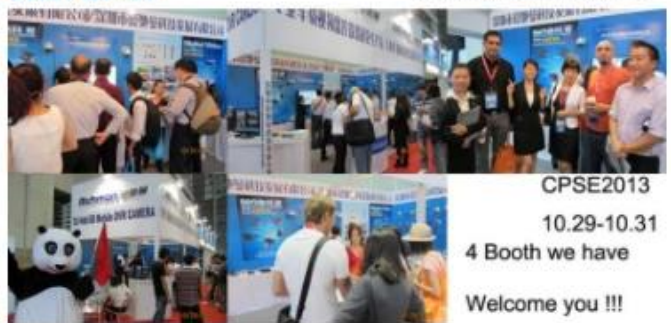


Our company

Office & Worker

Richmor

CPSE2012 in Shenzhen



Trade show

Our show in Shenzhen

Packing & Delivery

Packing Details : 1pc/box, 1box/carton, by standard box and carton, packing method can be as your request.

Delivery Details : We can delivery goods by air, by sea, by truck, etc. 5-15days after deposit and order details confirmed.



1. Special brand packing



2. Box with Richmor



3. Neutural box



4. Standard accessories



5. Support all ways of delivery

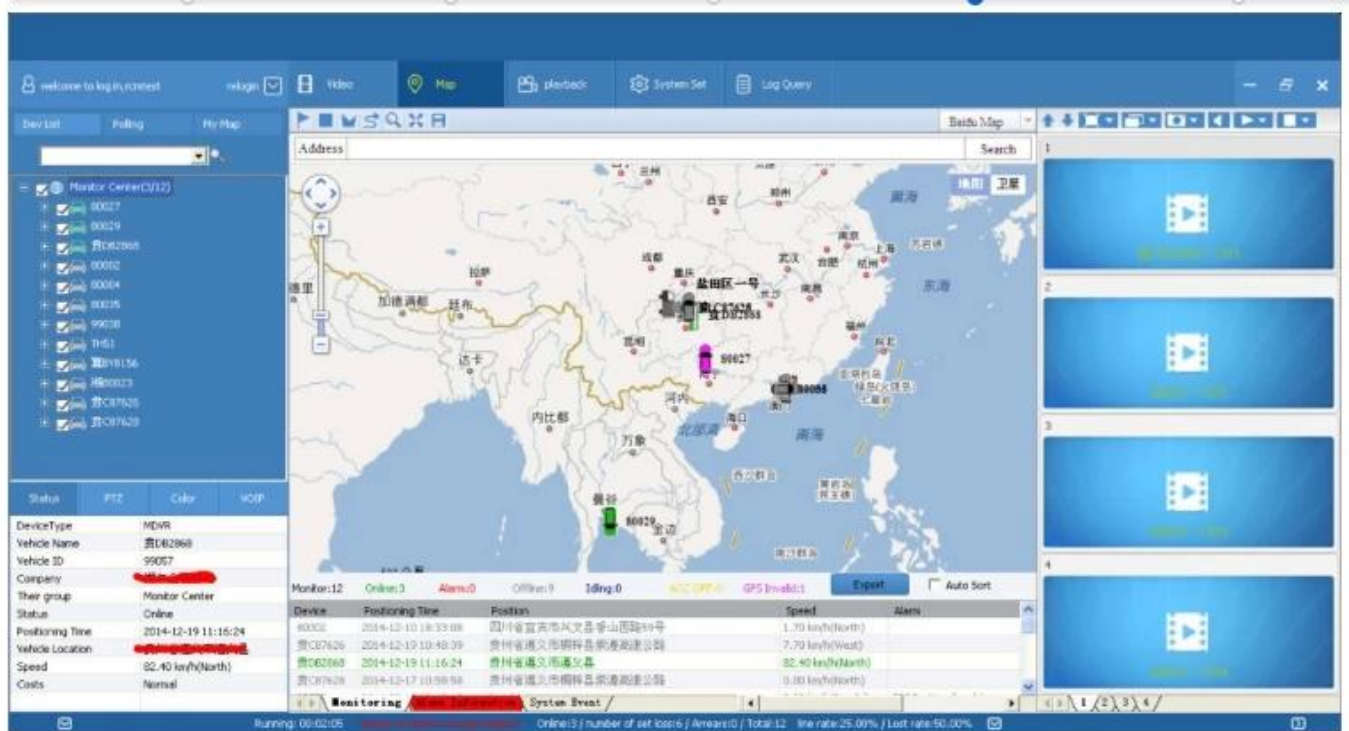


6. Join Richmor

CMSV6 INTERFACE

Easily Smart GUI Interface, saving time in device setting.





Support all vehicles

Omnibearing Viewing and Total Vision Protection



Dangerous chemical car



Tobacco Logistics



Travelling Bus



Public Bus



School Bus



Express Logistics



Taxi



Truck

FAQ



Welcome to contact Sylvia for more details

By Skype: rcmcctvsales4

By Trade manager: cn1001765398

By We chat: Jobslovers

By What's app: +86 18126263832

By E-mail: overseasales-4@rcmcctv.com

Q:Are you factory manufacturer or trade company?

We are factory manufacturer,we have our own factory and technology/skill support,we have engineers to support/take charge of R&D ,resolve problems product.

Q: Does the MDVR support Hard drive and SD card?

Yes, HDD version MDVR supports SSD, HDD, and SD card. SD card version MDVR supports max 2 SD card.The storage capacity can be from 32GB to 2TB.

Q: Is it difficult to install MDVR into the vehicle?

Actually it is easy to install it into vehicle. Most driver can figure out how to connect the power cables.And the camera installation is more easy. Just screw, connect and mount on the target place inside the vehicle.

Q: If I need door open and close alarm, overspeed alarm, reverse video, brake video, left-turn video, right-turn video, etc,is it available?

Definitely yes!The I/O RS232 and 485 extension port is for all expanded purposes, including the functions above.In fact, there are more customized functions which can be connect through this port, such as Fuel sensor, Counter system,PTZ camera, and so on.

Q: We have our own platform and server, can we use your MDVR? Do you have SDK or can you do customized platform for us?

Yes, we have SDK ready and welcome your OEM customized order!

Q: Does the MDVR come with accessroy, such as HDD, SD card, Microphone, Camera, Extension cable etc?

We have all accessories ready. You can ask us to make the complete quote for one whole set. Normally the MDVR doesn't include any accessory. Therefore it is advisable to inform us about your target accessory. All can be done right here. One-stop service purchasing.

Q: Can I get a sample to test before formal order?

Yes, you can. We can provide sample with 1 month test period. It will demand some deposit and the delivery (both send and resend) cost is supposed to be on your own side. If the delivery cost is not so high, we recommend this way. If not, then we do not recommend you do this.

Do not forget the import tax as well.

Q: How many camera in one set? Can I use my own accessory?

A: The accessory depends on you. The normal quotation is based on MDVR only. The accessory would not be quoted until you ask for them. And it is OK to use your own accessory. It is compatible.

Q: What can I do if the MDVR fails to work?

A: You can send it back to us. Remember that we provide 12 months quality warranty under normal use. If you send it back, we will inspect the MDVR in details and repair it for you. However we seldom have returned defective MDVR. The quality is rather good!