

Mobile dvr support fule sensor for truck security with 4ch ahd camera input

(RCM-MDR210 Series)

[Mobile dvr with wifi](#)

PRODUCT FEATURES

4ch 720P 3G 4G Mobile DVR

1. H.264 Compression Mode, support 4CH real-time 720P Mega Pixel AHD input and Analog Standard Definition camera input;
2. Exclusive pre-allocate DVR Special File System Technology, solving repeatedly wipe cause file fragmentation, solving SD Card file system collapse, data loss and cannot find SD CARD and file garbled, ensure the integrity of the data.
3. 10-36V Adaptive Wide Voltage input, Super low Power Consumption Design;
4. SD card storage (2SD cards, Each maximum support 128GB) It can be completely resist car Vibration. Dust and others cause data corruption;
5. Support GPS/BD/G-Sensor; High Reliability Aviation Connectors.
6. High Cost Performance with reliable stability, simple and clear operation menu.

| RCM-MDR 210 Series | |
|--------------------|---|
| Model NO. | Function |
| RCM-MDR210XXXI | Basic Recording,G-Sensor, Single SD card slot |
| RCM-MDR210XGXX | GPS, G-Sensor, Single SD card slot |
| RCM-MDR210WGSX | 3G, GPS, G-Sensor, Dual SD card slot |
| RCM-MDR210FGSX | 3G, 4G, GPS, G-Sensor, Dual SD card slot |
| RCM-MDR210WGDX | 3G, WIFI, GPS, G-Sensor, Dual SD card slot |
| RCM-MDR210FGDX | 3G, 4G, WIFI, GPS, G-Sensor,Dual SD card slot |

DEATAIL PICTURES



Device back view



Device front view

4ch 720P 3G 4G Mobile DVR



Device back view

4ch 720P 3G 4G Mobile DVR



Device front view

4ch 720P 3G 4G Mobile DVR

LED Indicators



4ch 720P 3G 4G Mobile DVR

Back Panel



RCM-MDR210 PARAMETER SHEET

| Item | | Parameter |
|---------------------|--------------------------|---|
| OS | | Linux |
| Language | | Chinese/English/Customized |
| Video Compression | | H.264 |
| OSD | | Overlays information such as date time and vehicle ID |
| GUI | Graphical User Interface | Setup system parameters with the remote control. |
| Video Record System | Video Input | 4CH 720P AHD input/SD input/mixed video input, aviation connector, 1.0Vp-p, 75Ω |
| | Video Output | 1CH CVBS+1CH VGA output, 1.0Vp-p, 75Ω, Aviation, Support 1CH Full Screen, 4CH Screen |
| | Preview | Support 1 channel and 4 channels preview. Support Manual/Alarm Trigger full screen preview |
| | Resolution | 720P/D1/HD1/CIF, MAX:4 channels 720P |
| | Video Quality | 0-7 levels, 0 is the highest level. |
| | Video Standard | PAL: 100f/s , CCIR625 line, 50field; NTSC: 120f/s, CCIR525 line, 60field; CIF: 256Kbps ~ 1.5Mbps, 8 level video quality optional; HD1: 600Kbps ~ 2.5Mbps, 8 level video quality optional; D1: 800Kbps ~ 3Mbps, 8 level video quality optional; 720P: 4Mbps-6Mbps, multi level video quality optional |
| Record Mode | | The default setting is auto recording after power on. Timed recording, alarm trigger recording and manual recording are supported. |
| Audio | Audio Input | 4CH ,Aviation Plug |
| | Audio Output | 1CH, Aviation Plug |
| | Compression | G.726 compression, 8KB/s speed |

| | | |
|-------------------------|-------------------|--|
| Alarm Input | | 4Ch Alarm Input, kinds of alarm linkage support |
| Alarm Output | | 1CH Alarm Output |
| Communication interface | | 1CH RS232 or 1CH RS485 for optional |
| Position | | Support Built GPS/BD Module, built in G-sensor, can replay and analyse vehicle driven route. |
| wireless transmission | | Support Built-in 3G/4G wireless transmission function, WCDMA, CDMA2000, TDD-LTE, FDD-LTE.... |
| Motion Detection | | Support motion detection alarm. (Can set the video recording duration time after alarm on platform.) |
| G-Sensor | | Support G-sensor |
| Storage | SD | Dual SD Card,each max 128GB SD Card loop recording |
| | Upgrade | Support SD Card remote updating |
| | File Format | H.264 |
| | File System | Special FAT32 File System |
| Video Playback | Video Search | Search By Record Time/Record Type etc |
| | Playback | Max support 4CH Replay /Stop/Fast/Slow at same time Support forward and backward play at the speed of: x 2,x4,x8,x16. |
| Voltage & Power | Power Management | Wide Voltage.Support Timed/Delay off |
| | Voltage Input | DC:+8V ~ +36V |
| | Power Consumption | Normal Working □14W , Stand-by status < 0.5W |
| | Temperature | -20°C to +70°C |
| Working Environment | Humidity | 20% to 80% |
| | Password | User/Admin 2 Level Different Password |
| Security | Size | 112(W) x36(H) x138(D) mm |
| others | Net Weight | 360g |

RICHMOR SURVEILLANCE GUL

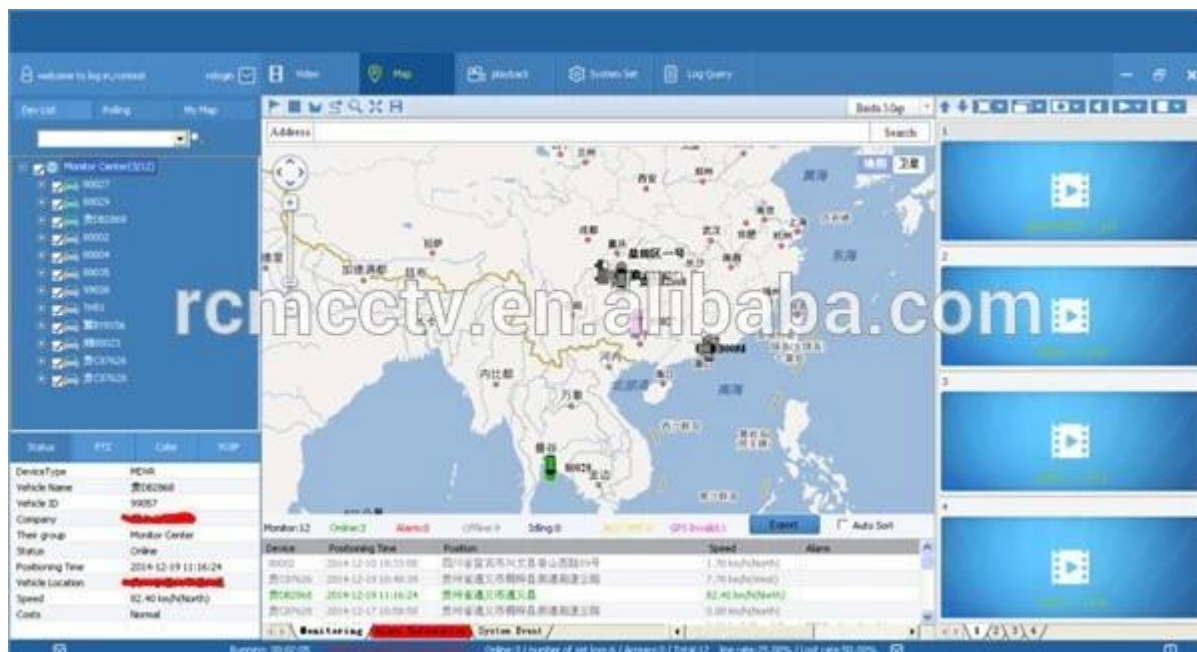
The main menu includes: Search, System setup, Rec setup, Network setup, Alarm setup, Peripheral setup, System Tools, System Information, as below:



RICHMOR MOBILE DVR MILEAGE SUMMARY

| Vehicle Management System | | | | | | | | | |
|--|---------|--------------------|---------------------|--------------------|-----------------------|---------------------|------------------|--|--|
| Welcome! 销售经理 Manager Exit | | | | | | | | | |
| Report Device User | | | | | | | | | |
| <div> </div> <div> Mileage Summary </div> <div> Begin Time: 2016-01-08 00:00:00 To: 2016-01-08 16:27:09 </div> <div> Device: All Devices Select Device Query Export To Excel Export To Csv Export To Pdf </div> | | | | | | | | | |
| Mileage Summary | | | | | | | | | |
| Index | Vehicle | Total Mileage (KM) | Begin Time | Start Mileage (KM) | Start Position | End Time | End Mileage (KM) | | |
| 1 | 023114 | 174.00 | 2016-01-08 08:00:30 | 22.85 | 22.524294, 114.000444 | 2016-01-08 16:25:41 | 157.03 | | |
| 2 | 023130 | 202.07 | 2016-01-08 07:30:17 | 18.1 | 22.664299, 112.882902 | 2016-01-08 16:25:28 | 171.57 | | |
| 3 | 24012 | 277.42 | 2016-01-08 07:09:55 | 23.41 | 23.369582, 116.675227 | 2016-01-08 14:57:24 | 300.03 | | |
| 4 | 178248 | 97.4 | 2016-01-08 00:00:25 | 296.97 | 41.572492, 110.788245 | 2016-01-08 08:42:38 | 41.09 | | |
| 5 | 24023 | 0 | 2016-01-08 00:00:07 | 16.26 | 37.158759, 120.731127 | 2016-01-08 16:19:07 | 16.26 | | |
| 6 | 005387 | 416.36 | 2016-01-08 08:09:54 | 98.88 | 35.481432, 117.643793 | 2016-01-08 16:20:11 | 92.83 | | |
| 7 | 0261712 | 120.98 | 2016-01-08 04:48:40 | 26.51 | 36.676478, 117.681941 | 2016-01-08 14:25:07 | 144.92 | | |
| 8 | 005250 | 45.81 | 2016-01-08 00:00:03 | 138.13 | 22.654294, 112.489593 | 2016-01-08 16:15:15 | 115.82 | | |
| 9 | 005153 | 48.64 | 2016-01-08 00:00:27 | 82 | 22.654187, 112.487665 | 2016-01-08 16:11:28 | 73.72 | | |
| 10 | 005388 | 111.72 | 2016-01-08 00:00:15 | 145.61 | 22.654321, 112.489647 | 2016-01-08 16:24:48 | 93.9 | | |
| 11 | 005010 | 52.02 | 2016-01-08 00:00:10 | 89.24 | 22.654294, 112.487785 | 2016-01-08 16:15:55 | 57.82 | | |
| 12 | 044083 | 895.08 | 2016-01-08 00:00:29 | 354.36 | 35.950843, 117.689781 | 2016-01-08 16:24:44 | 1089.74 | | |
| 13 | 24058 | 224.42 | 2016-01-08 07:00:58 | 44.57 | 37.549786, 116.944070 | 2016-01-08 16:17:34 | 60.4 | | |
| 14 | 28999 | 2.36 | 2016-01-08 13:13:08 | 17.6 | 28.734432, 121.238847 | 2016-01-08 13:57:27 | 19.81 | | |
| 15 | 00588 | 369.29 | 2016-01-08 00:00:54 | 51.04 | 35.733305, 115.663921 | 2016-01-08 16:00:58 | 420.33 | | |

PLAYER SOFTWARE INTERFACE



Richmor actual case



APPLICATION

Widely used in passenger car,bus,taxi,school bus,lorry,dangerous vehicle, personal car and ship etc.



Travelling Bus



Public Bus



Dangerous chemical car



Tobacco Logistics



Taxi



Truck



School Bus



Express Logistics



Road Police Car



Border Car



Traffic Inspection Car



Civil Work Vehicle



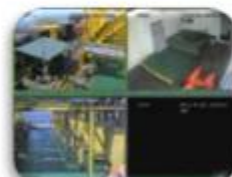
Escort Vehicle



Ambulance



Fixed place monitor



Ship Monitor

BUYING GUIDES

Packaging

1 unit with all standard accessories such as AV Cables/IO Cable/Power Cable/Key etc

Neutral paper box or Color paper box with Logo Richmor printed,also welcome customized package.



Richmor Brand Package



Standard Package

COOPEATION TERMS

SHIPPING INFO

Estimated Shipping Time

- a. 3-5 working days after payment cleared for sample order.
- b. 5-10 working days after payment cleared depends on order quantity for bulk order.

Remarks:

- 1.Order will be dispatched before next 2 working day after full payment is done,48 hours aging time;
- 2.Related documents will be sent after order is dispatched,please check mail;
- 3.All parcels will be shipped by DHL/TNT/UPS/EMS/FedEx/Air etc according your option;

PAYMENT INFO

- 1.T/T;Western Union;Paypal optional;
- 2.30% deposit,balance be paid before delivery

Remarks:

Please sent bank slip when payment done,according this we will arrange the production

WARRANTY INFO

Free Replacement:

Mobile DVR Recorder can replace free under conditions within 15 days after sale,in the precondition of our quality problem,non-artificial damage

SUPPLIER WARRANTY

We offer ONE YEAR warranty on Vehicle Mobile DVR Recorder,if your item has any warranty issue please contact us for a satisfying solution

Remark:

All qualified returns/replacement must be guided by us,we may not accept your return without informing us in advance

SUPPLIER WARRANTY

1. Well Trained Sales Team and strong engineers for fast and professional support.
2. OEM/ODM Service



CUSTOMER SATISFACTION

- Excellent Aftersale service
- 12 months warranty
- 24 hours customer service
- We understand the importance of our customers

CERTIFICATIONS

Certification



EXHIBITION

Richmor

CPSE2012 in Shenzhen



CPSE2013

10.29-10.31

4 Booth we have

Welcome you !!!



CPSE2012-- Guangdong TV Report-Shenzhen Richmor



ABOUTUS & CUSTOMERS





EXCELLENT SUPPORT



Skype: rcmcctvsales2

[hd car dvr camera system](#)