

Detailed Images



H.264 Compression Mode, Support 4CH real-time 720P AHD and 4CH Analog mega pixel Standard Definition camera input, Support 2CH HD+2CH Standard Definition camera input;
Exclusive pre-allocate DVR Special File System Technology,Solving repeatedly wipe cause file fragmentation, solving SD card file system collapse, data loss and cannot find SD card and file garbled, ensure the integrity of the data.
8-36V Adaptive Wide Voltage input, Super Low Power Consumption Design;HDD+SD card storage (maximum support 2TB 2.5" hard disk and 128GB SD card.) It can be completely resist car Vibration,Dust and others cause data corruption; Support GPS/BD/G-SENSOR ; High Reliability Aviation Connectors,High Cost Performance with reliable stability,simple and clear operation menu .



Item		Parameter
OS		Linux
Language		Chinese/English/Others (can be customized)
Video Compression		H.264 Compression Mode
OSD		Overlays information such as date time and vehicle ID
GUI	Graphical User Interface	Can connect to external LED screen. Setup system parameters with the remote control.
Video Record System	Video Input	4CH 720P AHD/4CH SD/2CH HD+2CH SD input ,aviation connector.
	Video Output	1CH CVBS+ VGA output for optional, 1.0Vp-p, 75 Ω
	Preview	Support 1 channel and 4 channels preview.,Support Manual/Alarm Trigger full screen preview
	Resolution	Support 720P/D1/CIF, MAX:4 channels 720P or 4channels D1(analog)
	Video Quality	0-7 levels, 0 is the highest level, 7 is the lowest level.
	Video Standard	PAL: 100f/s , CCIR625 line,50field; NTSC: 120f/s, CCIR525 line,60field; CIF: 256Kbps ~ 1.5Mbps, multi levels video quality optional; HD1: 600Kbps ~ 2.5Mbps, multi levels video quality optional; D1: 800Kbps ~ 3Mbps, multi levels video quality optional; 720P : 1Mbps~4Mbps, multi levels video quality optional;
	Record Mode	The default setting is auto recording after power on. Timed recording, alarm trigger recording and manual recording are supported.

Audio	Audio Input	4CH ,Aviation Plug
	Audio Output	1CH,rear port connects to BNC connector.
	Compression	G.726 compression, 8KB/s speed
Alarm Input		6CH IO Alarm Input, Support alarm linkage function
Alarm Output		2CH Relay Alarm Output, Support the linkage acousto-optic alarm, cut off fuel oil/power,etc
Communication Interface		1CH RS232, support extension device, such as POS machine, Oil Fuel sensor, LED advertising screen , etc.
		1CH 485 interface, can connect PTZ,etc.
		2CH CAN interface.
Wireless transfer		Support Built-in 3G network, WCDMA,CDMA2000,TD-SCDMA compatible with GPRS,EDGE; Support Built-in 4G network, TTD-LTE, FDD-LTE
Position		Support Built GPS/BD Module,can make playback analysis of vehicle routing
G-Sensor		Support G-sensor
Video Storage	Storage	2.5" HDD+ SD Card,each max 2TB HDD + 128GB SD Card mirror recording to protect data from loss
	Upgrade	Support USB flash disk updating,SD card upgrade , OTA remote upgrade automatically
	File Format	264
	File System	Special Car system File System
	USB	Front panel supports USB port, support USB flash disk upgrade to backup; hard disk box USB port, can back up video data

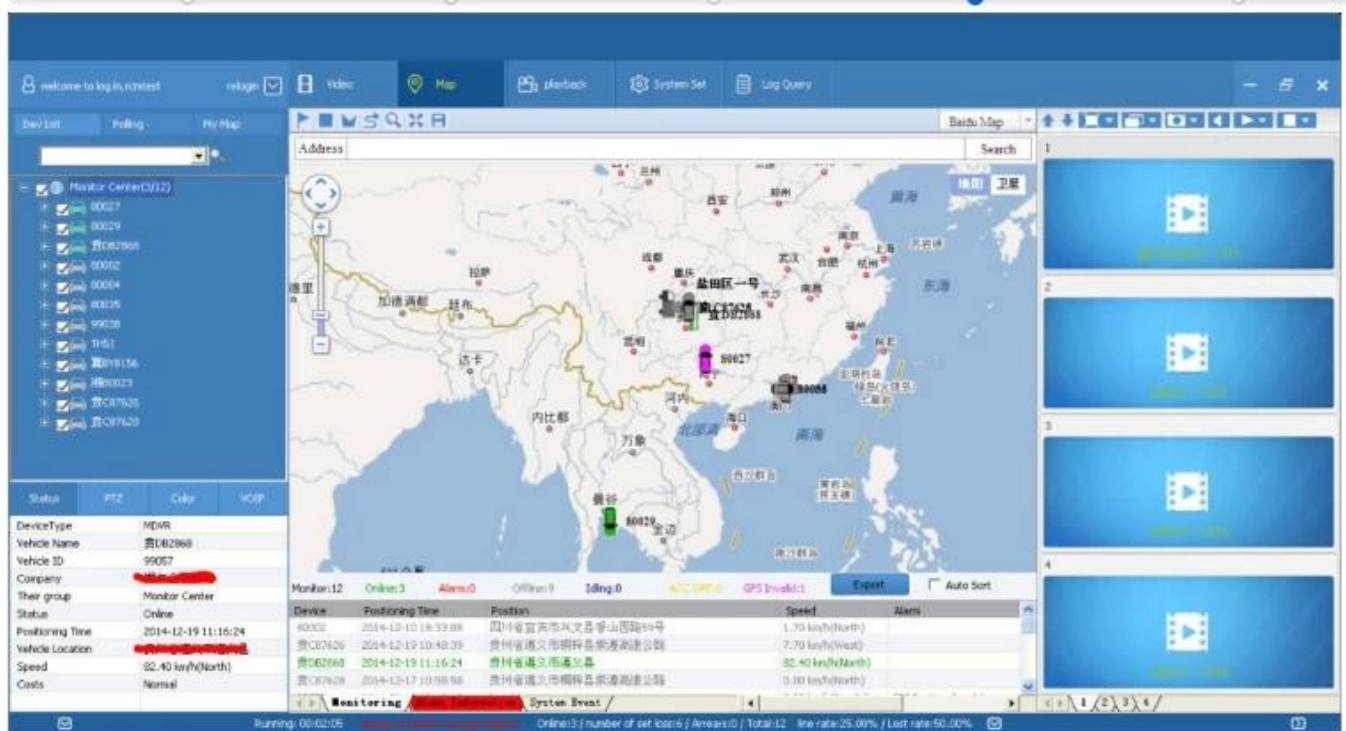
	Playback	Max support 4CH Replay /Stop/Fast Forward/Fast Reverse at same time
		Support x 2,x4,x8,x16. fast forward or fast backward play
Safety Management		User/Admin 2 Levels Different Passwords , support screen lock
Voltage &Power Consumption	Power Management	Adaptive wide power input, support Wide Voltage, Over-load、Over-voltage、Short Circuit、Reverse Protection..Support Time Setting/Delay power off
	Voltage Input	DC:+8V ~ +36V
	Voltage Output	+12V@2.5A, +5V@2.5A
	Power Consumption	Normal Working <14W
Working Environment	Temperature	-20℃ to +70℃
	Humidity	20% to 80%
others	Size	200 (D) * 187 (W) * 62 (H) mm
	Net Weight	1.9kg

Application

RMSV6 INTERFACE

Easily Smart GUI Interface, saving time in device setting.





Support all vehicles

Omnibearing Viewing and Total Vision Protection



Dangerous chemical car



Tobacco Logistics



Travelling Bus



Public Bus



School Bus



Express Logistics



Taxi



Truck

Our Company

Shenzhen **Richmor** Science & Technology Development Co.,Ltd

Shenzhen Richmor Science & Technology Development Co.,Ltd, is a high-tech corporation specialized in developing,producing and selling intelligentized digital CCTV systems.

Our products mainly include 3G/4G mobile DVR, network /analog million pixels High definition SD card/HDD mobile DVRs, 3G/4G portable DVRs for Law enforcement;

And many kinds of cameras;Including CCTV night viewing HD PTZ Camera,analog car cameras,car high definition cameras and other professional car CCTV equipment.





"4 M" MANAGEMENT

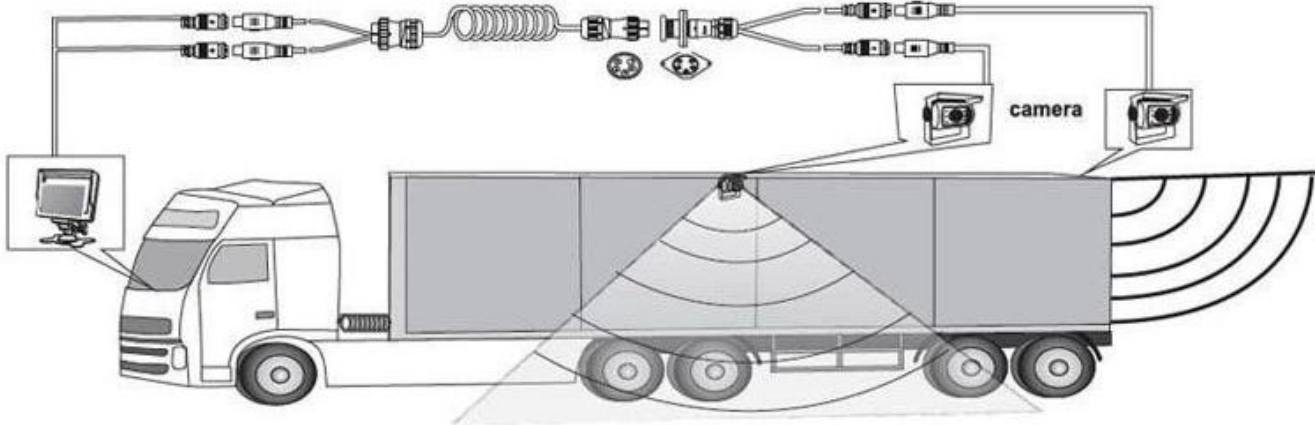
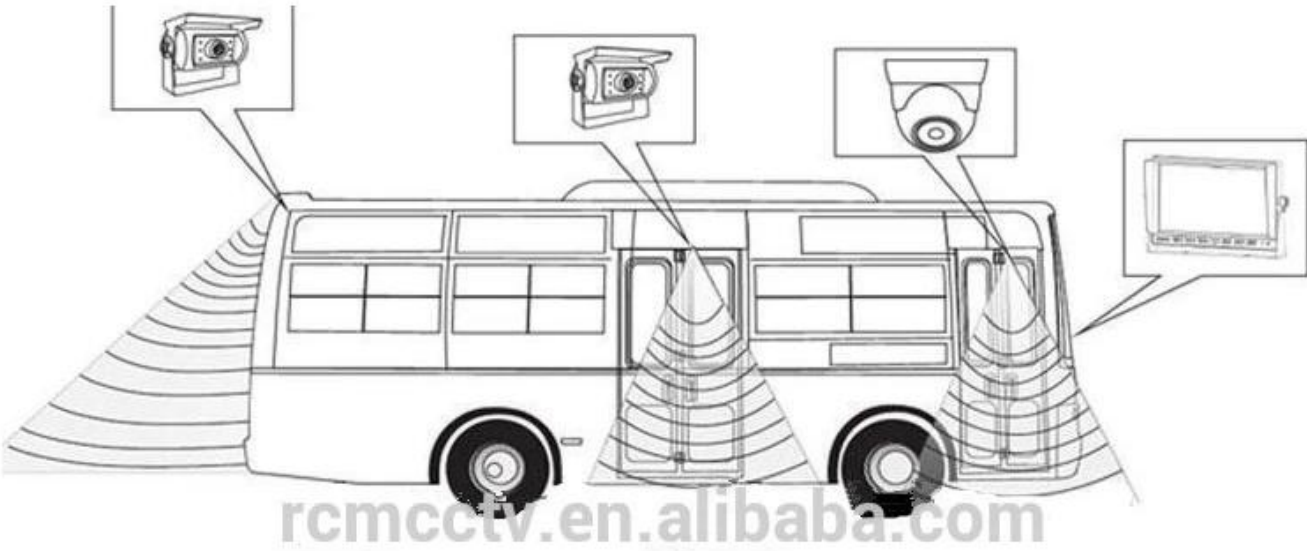
More enhancements of product quality everyday.

More progress of services and sales everyday.

More widely the effect of our brand expands everyday.

More smiles to each of us everyday.

Support All Vehicle



Richmor Brazil, Sao Paulo

EXPOSEC
FEIRA INTERNACIONAL DE SEGURANÇA

10 a 12 maio de 2016
das 13h às 20h
São Paulo Expo - Exhibition & Convention Center



21th TO 24th, March 2016 **Moscow, Russia**

securika
Mips Moscow 2016

IFSEC International
SECURING PEOPLE, PROPERTY & ASSETS
21-23 JUNE 2016 EXCEL LONDON UK

Excel London, UK



Our Certifications



We are professional OEM Mobile DVR and NVR produtor and company.

There are more certifications in our company.Such as RoHs,FCC,CE etc.

FAQ

Q:Are you factory manufacturer or trade company?

We are factory manufacturer,we have our own factory and technology/skill support,we have engineers to support/take charge of R&D ,resolve problems product.

Q: Does the MDVR support Hard drive and SD card?

Yes, HDD version MDVR supports SSD, HDD, and SD card. SD card version MDVR supports max 2 SD card.The storage capacity can be from 32GB to 2TB.

Q: Is it difficult to install MDVR into the vehicle?

Actually it is easy to install it into vehicle. Most driver can figure out how to connect the power cables.And the camera installation is more easy. Just screw, connect and mount on the target place inside the vehicle.

Q: If I need door open and close alarm, overspeed alarm, reverse video, brake video, left-turn video, right-turn video, etc,is it available?

Definitely yes!The I/O RS232 and 485 extension port is for all expanded purposes, including the functions above.In fact, there are more customized functions which can be connect through this port, such as Fuel sensor, Counter system,PTZ camera, and so on.

Q: We have our own platform and server, can we use your MDVR? Do you have SDK or can you do customized platform for us?

Yes, we have SDK ready and welcome your OEM customized order!

Q: We have our own platform and server, can we use your MDVR? Do you have SDK or can you do customized platform for us?

Yes, we have SDK ready and welcome your OEM customized order!

Q: Does the MDVR come with accessory, such as HDD, SD card, Microphone, Camera, Extension cable etc?

We have all accessories ready. You can ask us to make the complete quote for one whole set. Normally the MDVR doesn't include any accessory. Therefore it is advisable to inform us about your target accessory. All are can done right here. One-stop-serve purchasing.

Q: Can I get a sample to test before formal order?

Yes, you can. We can provide sample with 1 month test period. It will demand some deposit and the delivery (both send and resend) cost is supposed to be on your own side. If the deliver cost is not so high, we recommend this way. If not, then we do not recommend you do this. Do not forget the import tax as well.

Q: How many camera in one set? Can I use my own accessory?

A: The accessory depends on you. The normal quotation is based on MDVR only. The accessory would not be quoted until you ask for them. And it is OK to use your own accessory. It is compatible.

Q: What can I do if the MDVR fails to work?

A: You can send it back to us. Remember that we provide 12 months quality warranty under normal use. If you send it back, we will inspect the MDVR in details and repair it for you. However we seldom have returned defective MDVR. The quality is rather good!



Welcome to contact **Sylvia** for more details

By Skype: [rcmcctvsales4](#)

By Trade manager: [cn1001765398](#)

By We chat: [Jobslovers](#)

By What's app: [+86 18126263832](#)

By E-mail: overseasales-4@rcmcctv.com
