



System Selling Points:

- 1) MDVR + AI All-In-One. Monitoring and Enhance Driving Safety at the same time.
- 2) Strongly Support ADAS+DSM+BSD. Further support HOD, 360 degree view, etc.
- 3) 8 channel full HD (1080P) video recording, H.265.
- 4) World first AI MDVR, 1.2T computing NPU ensures high accuracy and stable performance.

Send us inquiry to get complete product presentation and competitive price!

Applications

Widely applied in bus, coach, truck, logistics field.



What does this system combine?

MDVR + ADAS cam + DSM cam + BSD cam + inner&outer Speaker



AI-Chipset MDVR 8CH Full HD + H.265 + GPS + 3G/4G + WIFI (optional)
 Algorithm is written inside the MDVR chipsets.



ADAS(Advanced Driving Assistance System)

Collision Warning/Passenger Detection/Lane Departure Warning Enhance driving safety,
 Avoid accidents!!



DSM(Driver Status Monitoring) Behavior Detection:
Fatigue/Disctraction/Smoking/Calling supported Language:
English/Russian/Spanish/Portuguese/customized

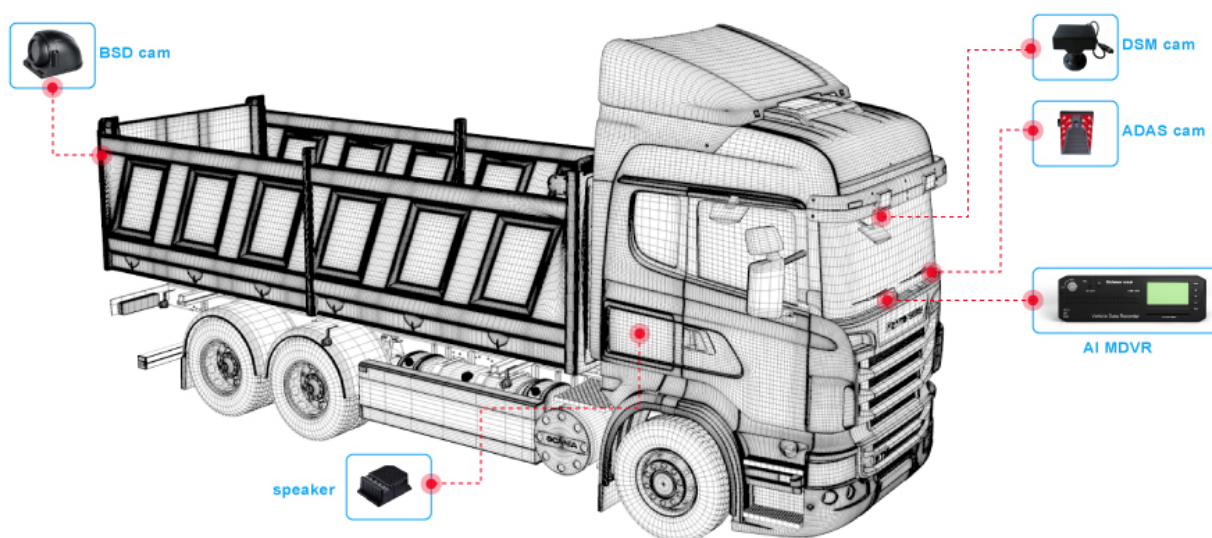


BSD (Blind Area Detection)

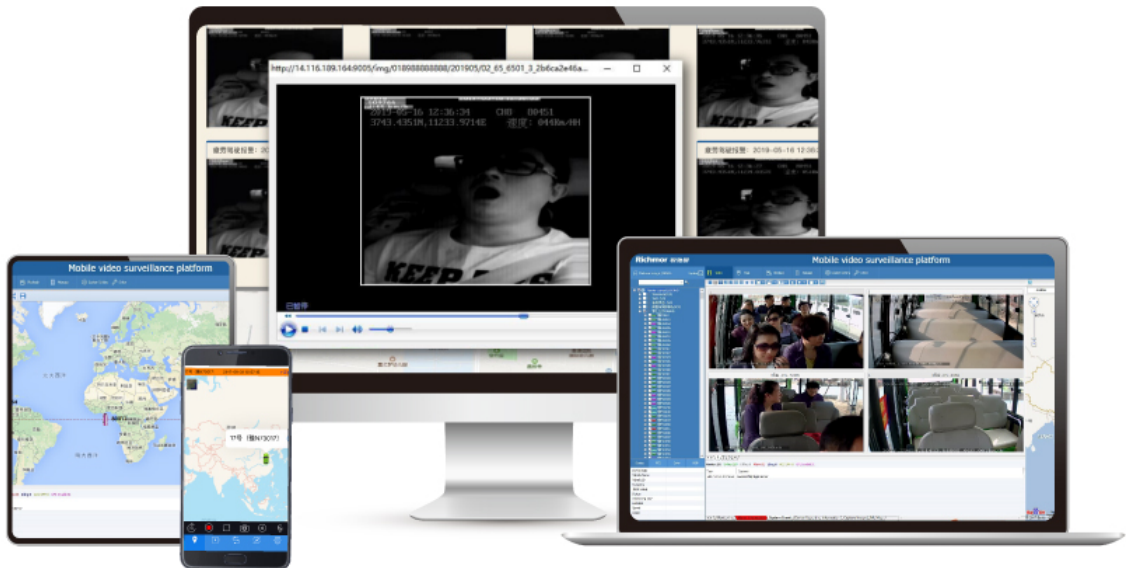
3-level pre-warnings Distinguish Moving Objectives Intelligently



Installation Diagram BSD camera supports installing on the left/right back/front side to adapt to different vehicles. Supports dual BSD detection. Quick installation and easy parameter setup.



AI Platform GPS/Video/Event report PC client/Andoid APP/IOS APP/Professional player



More AI function The strong AI chipset enables this system further supports below functions and more.

360°viewing



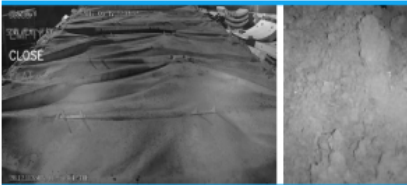
HOD detection



Seatbelt detection



Cargo detection



Using phone detection



Passenger counting



Specification

item	value
Operation system	Linux
CPU Speed	1.2GHZ
NOR FLASH CAPACITY	32MB NOR+128M NAND
RAM CAPACITY	1G
Resolution	1080P/960P/720P/D1/CIF
Compression mode	H.265, H.264
Video input	8 channels
Video output	CVBS or VGA
Communicate mode	3g/4g/wifi optional
Audio Input	8 channels
Audio output	3 channels
AI function	ADAS/DSM/BSD/face recognition optional

API/SDK integration	Yes
GPS	Yes
Warranty	12 months

Company Profile

Shenzhen Richmor Technology Development Co., Ltd. is a TOP high-tech enterprise/manufacturer specialized in digital and intelligent mobile video surveillance products, with rich experiences for developing, producing and selling over 13 years. Product Mainly includes *3G 4G SD card/HDD mobile DVRs, ADAS DSM BSD AI mobile DVRs, MINI DVRs, HD vehicle camera* etc. As a professional manufacturer, we oncentrate ourselves on providing customers with most advanced technologies and products with highest quality.