

3G 4G 1080p video camera 2tb hdd VGA to 5ch mobile car dvr for school bus Remote Viewing Surveillance

(RCM-MDR 7105 Series)

[HD Vehicle DVR wholesales china](#)

[720p 4ch car dvr supplier](#)

[AHD MDVR manufacturer china](#)

**Remote Viewing Surveillance 3G 4G GPS WIFI 5CH HDD Mobile DVR With 1CH IPC
School bus solution**





功能特点 Features



实时监控, GPS定位
Real-time monitoring,
GPS positioning

身份验证, 人数统计
Two-factor authentication

采用高压压缩比, 图像清晰的H.264编码格式, 支持开机录像、定时录像及报警录像, 支持ACC熄火延时录像。内置GPS全球定位系统, 可通过3G网络远程查看实时视频, 车辆位置, 回放历史录像。支持手机远程监控。Adopting H.264 Video compression with high resolution, ACC on/off, Timer Recording, ACC Delay Recording Mode supported. Built-in GPS Tracking system, Real time video stream, Vehicle Position, Video Replay can be viewed through 3G Network, Support Mobile Phone remote Monitor.



可直接刷卡验证身份, 统计数据, 避免人工统计时出现失误。提供每个停靠站点实时的上下学生人数, 避免漏接学生, 以及把学生遗留在车内, 造成事故。Combine with Card Equipment for authenticate information and counting, avoid artificial statistical mistake, offer the students get on/off real time number at each station, avoid the accident caused by missing students or leaving students in the carriage.

语音功能 Voice features



可进行语音电话, 网络对讲, 声音广播。实现管理中心和车辆即时通讯。Support VOIP, 3G Intercom, Broadcast realize Center office communicate with Driver in real time.

行车记录, 驾驶员行为管理
Driving behavior management



对司机的不良行为进行监督, 比如经常超速、急加速、急减速、急刹车等容易对车内学生造成危险的行为; 并对其进行评测, 预防安全隐患发生。Supervise driver's bad behavior, such as: over-speed, acceleration, decelerate urgently, brakes etc dangerous behavior for students, Driver's Performance evidence.



短信提醒
Assured SMS alerts

车载智能系统会根据需要向家长发送孩子上下车短信, 包括什么时间、在哪里上车及下车, 让家长及时、快捷的了解学生安全状况, 有利于学生接送时间的精确控制。Intelligent vehicle system, students get on/off bus information sent to parents by SMS including When and where on/off, convenient for parents to know students status and easily for picking up students.



偏离报警
Yaw alarm

预先设定校车的固定行驶路线, 当校车未按照预定的行驶路线行驶时, 中心上会自动发出语音报警, 中心可与车载终端通过语音对讲进行通讯。Geo Fence Alarm, preset driving route, when out off the line it will sound alarm automatically at center office, center can talk with the driver for the information.

DETAILED PICTURES

Remote Viewing Surveillance 3G 4G 5ch GPS WIFI HDD Mobile DVR/ NVR with 1 CH IPC

Richmor

 **Factory Audit**

SMS Device configure
OTA Remote Updating
AHD 720P/960P
2TB HDD+128GB SD Card

NEW



CE

FC



Remote Viewing Surveillance 3G 4G 5ch GPS WIFI HDD Mobile DVR/ NVR with 1 CH IPC

Richmor

 **Factory Audit**

SMS Device configure

OTA Remote Updating

AHD 720P/960P

2TB HDD+128GB SD Card



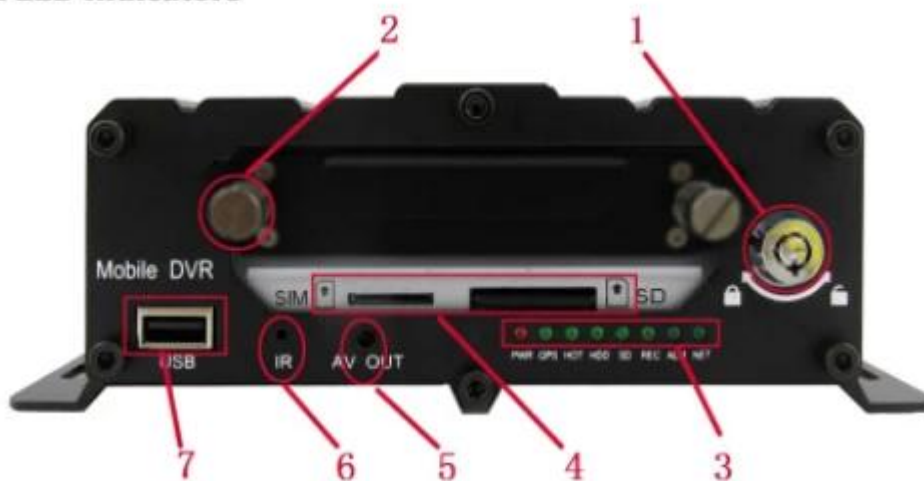
PRODUCT FEATURES

Remote Viewing Surveillance 3G 4G 5ch GPS WIFI HDD Mobile DVR/ NVR with 1 CH IPC

H.264 Compression Mode, Max support 5CH Million pixels HD video surveillance/ recording/ playback (4CH real-time 720P Million Pixels AHD input or 4CH Analog Standard Definition camera input, or 2CH HD input+2CH SD input) + 1CH 1080P IP Camera input ; Exclusive pre-allocate DVR Special File System Technology,Solving repeatedly wipe cause file fragmentation, solving SD card file system collapse, data loss and cannot find SD card and file garbled, ensure the integrity of the data. 8-36V Adaptive Wide Voltage input, Super Low Power Consumption Design;HDD+SD card storage (maximum support 2TB 2.5" hard disk and 128GB SD card.) It can be completely resist car Vibration,Dust and others cause data corruption; Support GPS/BD/G-SENSOR ; High Reliability Aviation Connectors,High Cost Performance with reliable stability,simple and clear operation menu .

Remote Viewing Surveillance 3G 4G 5ch GPS WIFI HDD Mobile DVR/ NVR with 1 CH IPC

Front LED Indicators



Remote Viewing Surveillance 3G 4G 5ch GPS WIFI HDD Mobile DVR/ NVR with 1 CH IPC

Back Panel IO Indicators



RICHMOR SURVEILLANCE GUL

The main menu includes: Search, System setup, Rec setup, Network setup, Alarm setup, Peripheral setup, System Tools, System Information, as below:



RCM-MDR7105 PARAMATER SHEET

Item	Parameter	
OS	Linux	
Language	English/Chinese/Customized	
Video Compression	H.264 Compression	
OSD	Overlays information such as date time and vehicle ID	
GUI	Graphical User Interface	Setup system parameters with the remote control.
Video Record System	Video Input	4CH real-time 720p million pixels Analog HD input / 4CH analog standard definition input/2CH analog input+ 2CH HD mixed input+ 1CH 1080P network camera input), aviation connector, 1.0Vp-p, 75Ω
	Video Output	2CH CVBS output+1CH VGA output for optional,1.0Vp-p, 75Ω,Support 1CH Full Screen,4CH Screen view
	Preview	Support 1 channel and 4 channels preview, 5 channels splice preview Support Manual/ Alarm Trigger full screen preview
	Resolution	1080P/720P/D1/HD1/CIF, MAX:4 channels of 720P + 1080P / 4 channels of D1
	Image Quality	1-4 levels, 1 is the highest level.
	Video Standard	PAL: 100f/s , CCIR625 line,50field; NTSC: 120f/s, CCIR525 line,60field; CIF: 256Kbps ~ 1.5Mbps, 8 level video quality optional; HD1: 600Kbps ~ 2.5Mbps, 8 level video quality optional; D1: 800Kbps ~ 3Mbps, 8 level video quality optional; 720P: 4Mbps-6Mbps, multilevel video quality optional
	Record Mode	The default setting is auto recording after power on. Timed recording, alarm trigger recording and manual recording are supported.
Audio	Audio Input	4CH Aviation Plug Input
	Audio Output	2CH,headphone connect at front panel, BNC Connect on Back panel
	Compression	G.726 compression, 8KB/s speed
Alarm Input	7CH Alarm Input,1CH AD Input, impulse speed input,Alarm Linkage	
Alarm Output	2CH Alarm Output,Support Light/Sound alarm sensor,Oil/Power cut off	
Interface	3CH RS232, POS/Fuel Sensor/ LED Advertisement Connection	
	2CH 485 Interface,Connect PTZ Camera	
Wireless Transmission	Support Built in 3G transmission,WCDMA, CDMA2000,GPRS, EDGE Built in 4G module optional, TDD-LTE, FDD-LTE	

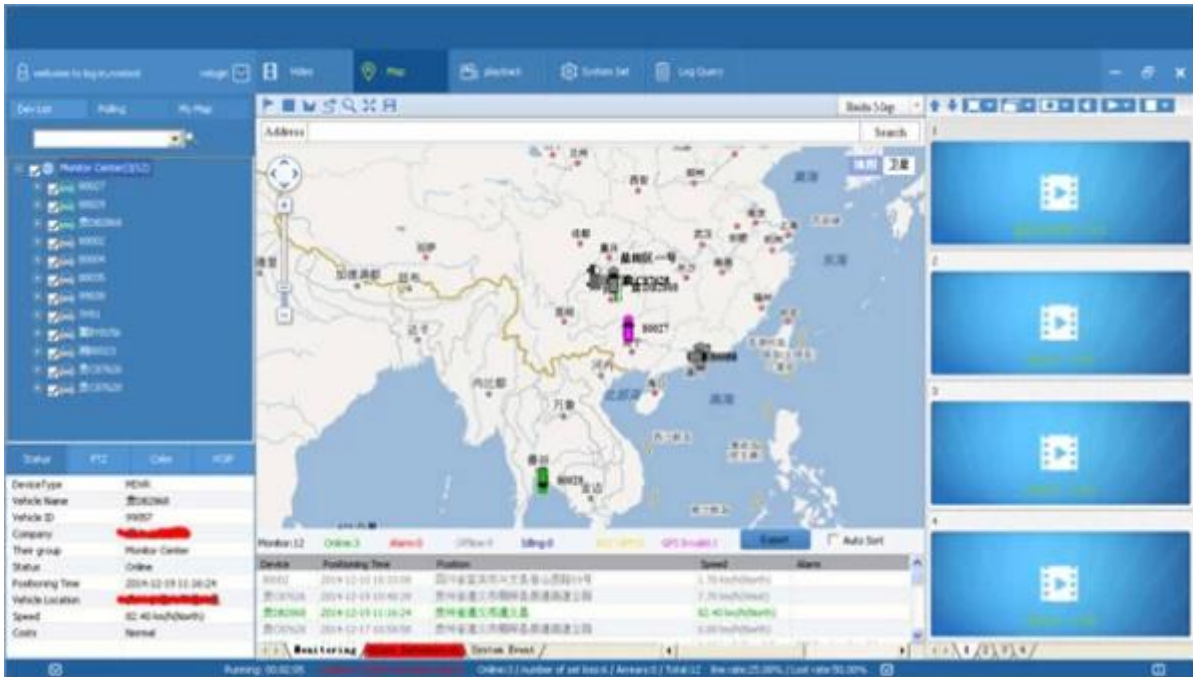
GPS Position		Support Built GPS/BD Module
	HDD	Max 2.5" HDD
Storage	SD Card	Max 128GB SD Card Mirror Recording Keep Data Safety
	Update	Support USB Updating, SD Card Updating, OTA Remote Updating
	File Format	H.264
	File System	Special FAT32 File System
	USB	USB Interface on Front Panel for data back up by U Disk,Hard Disk
Record Replay	Video Search	Search By Record Time/Record Type etc
	Playback	Max support 4CH Replay /Stop/ Fast/Slow at same time
		Support forward and backward play at the speed of: x 2,x4,x8,x16.
Security		User/Admin 2 Level Different Password
Optional Functions	Voice Call	Support voice call each other
	TTS Voice Broadcast	Support TTS voice broadcast function.
	Serial Expand	Support LED Advertisement Panel Oil Sensor POS Bus Station Broadcaster Car OBD,ect. external device
Voltage & Power	Power Management	Wide Voltage.Support Timed/Delay off/ over-load/Reversing connection/voltage shortage/ short circuit etc.
	Input Voltage	DC:+6V - +36V
	Power	Working 5W
Working Environment	Temperature	-20°C - +70°C
	Humidity	20% - 80%
Others	Size	200 D* 187W* 62H mm
	Weight	1.90 Kg

BUYING GUIDES

1. Support 5CH video input, video recording and playback (4CH real-time 720p mega pixels Analog HD input /4CH analog standard definition input/2CH high definition & 2 CH analog standard definition mixed input+1CH 1080P network camera input)
2. 3CH video output (2CH CVBS video output,Support front and rear output; 1CH VGA output for optional)

3. Exclusive pre-allocate DVR Special File System Technology, Solving repeatedly wipe cause file fragmentation, solving storage file system crash, data loss and cannot find storage media and file garbled, ensure the integrity of the data.
4. 8-36V wide voltage with low power consumption. Support Reverse Protection □ over-voltage/over-current protection. Output max to 10Amps current, support 12V & 5V peripheral equipment power supply. Ultra low power design;
5. Unique UPS Technology ensures the integrity of record when power failure occurs, even can last for 8-10s.
6. HDD+SD Card Storage (Support 2.5" HDD, max 128G SD Card) protect from Shock & Dust damage; support USB port data backup and device update;
7. Support 2 USB ports, data backup and equipment upgrades.
8. Support 9CH alarm input (1CH Analog input + 8CH IO alarm input), 2CH Independent alarm output.
9. Support 2 CAN interface.
10. Support HDD heating functions, can work in harsh environment.
11. Support GPS/BD/G-Sensor Extension module;
12. Realize real-time monitor through 3G/4G;
13. Support Broadcast/Intercom/Text sent etc; can add oil sensor/temperature sensor/POS/LED Advertisement Panel;
14. Support OTG device upgrade automatically, , device can automatically upgrade version update, maintenance is more convenient
15. Support IOS/Android Phone Remote monitor
16. High reliability aviation connectors, high cost performance, stable and reliable.

Player software interface (CMSV6 In PC)



CMSV6 In Mobile Phone.

Have all in the palm of your hand

Real-time monitoring via Mobile Phone --Support iPhone, Android, iPad system



Surveillance platform Playback

The screenshot displays a surveillance playback application window. At the top, there are tabs for 'File' and 'Video'. On the left, a 'Date' section shows the year '2015' and a 'Dec.' button. Below this is a calendar grid with the date '26' selected. The main area features a search interface with a 'Directory' field set to 'C:\', a 'Time Range' dropdown set to 'All', and a list of 'Event Type' checkboxes including 'All', 'I/O_1', 'I/O_2', 'I/O_3', 'I/O_4', 'I/O_5', 'I/O_6', 'I/O_7', 'I/O_8', and 'Emergency Button Alarm'. The central part of the window contains eight event thumbnails arranged in a 2x4 grid. Each thumbnail is a blue-tinted image with a white checkmark. Below each thumbnail are fields for 'Description:', 'Begin:', 'Duration:', and 'Event Type:'. At the bottom of the main area, there are navigation controls for 'Groups' and 'Pages'. The bottom-most section is a timeline from 00:00 to 24:00 with a legend on the left showing 'All', '1', '2', '3', and '4' with corresponding colored bars.

RICHMOR MOBILE DVR MILEAGE SUMMARY

Report Device User

Mileage Summary

Begin Time: 2016-01-08 00:00:00 To: 2016-01-08 16:27:09

Device: All Devices [Select Device] [Query] [Report To Excel] [Report To Csv] [Report To Pdf]

Index	Vehicle	Total Mileage (KM)	Begin Time	Start Mileage (KM)	Start Position	End Time	End Mileage (KM)
1	粤BXS114	174.88	2016-01-08 09:03:32	22.95	22.534394, 114.008444	2016-01-08 16:25:41	157.83
2	粤BXS130	302.07	2016-01-08 07:30:17	18.1	22.604299, 112.602902	2016-01-08 16:25:28	171.57
3	24312	277.42	2016-01-08 07:06:55	23.41	23.36882, 116.675227	2016-01-08 14:57:24	300.83
4	粤AT6248	97.4	2016-01-08 00:00:25	299.97	41.572469, 118.708245	2016-01-08 09:42:38	41.09
5	24323	0	2016-01-08 00:00:07	18.26	37.750759, 120.731127	2016-01-08 16:19:07	18.26
6	粤NYS387	416.36	2016-01-08 06:06:54	96.66	35.461432, 117.643793	2016-01-08 16:20:11	82.63
7	粤J81712	120.98	2016-01-08 04:48:40	28.51	35.376475, 117.681941	2016-01-08 14:25:07	144.92
8	粤NYS250	45.81	2016-01-08 00:00:03	139.13	22.654294, 112.468593	2016-01-08 16:15:15	115.82
9	粤NYS153	48.61	2016-01-08 00:00:27	92	22.654197, 112.497965	2016-01-08 16:11:28	73.72
10	粤NYS368	111.72	2016-01-08 00:00:15	145.61	22.654321, 112.466645	2016-01-08 16:24:48	95.9
11	粤NYS110	52.02	2016-01-08 00:00:10	93.24	22.654294, 112.497795	2016-01-08 16:15:55	57.92
12	粤NA3883	855.89	2016-01-08 00:00:29	354.36	35.958843, 117.658700	2016-01-08 16:24:44	1009.74
13	24358	224.42	2016-01-08 07:00:58	44.57	37.949708, 118.844370	2016-01-08 16:17:34	60.4
14	28999	2.38	2016-01-08 13:13:09	17.6	28.734420, 121.235947	2016-01-08 13:57:27	19.86
15	01566	369.29	2016-01-08 00:00:54	51.04	33.733305, 115.868921	2016-01-08 16:03:58	420.33

Richmor actual case

Richmor 锐德摩 移动视频监控平台

公交客车 锐驰曼实用放心有品味

The screenshot displays a comprehensive monitoring interface. On the left, a tree view lists various bus routes and vehicles. The main area features four live video feeds: two from the driver's perspective and two from passenger areas. A map on the right shows the bus's current location and route. Below the feeds, a data table provides details for each vehicle, including its ID, license plate, and status.

车牌	车牌号	位置	速度	状态
24023	2015-09-11 13:46:37	广东省东莞市南城街道	0.00 km/h (静止)	正常
24023	2015-09-11 13:46:38	广东省东莞市南城街道	0.00 km/h (静止)	正常
24023	2015-09-11 13:46:39	广东省东莞市南城街道	0.00 km/h (静止)	正常
24023	2015-09-11 13:46:40	广东省东莞市南城街道	0.00 km/h (静止)	正常

Application

Widely used in passenger car, bus, taxi, school bus, lorry, dangerous vehicle, personal car and ship etc.



Travelling Bus



Public Bus



Dangerous chemical car



Tobacco Logistics



Taxi



Truck



School Bus



Express Logistics



Road Police Car



Border Car



Traffic Inspection Car



Civil Work Vehicle



Escort Vehicle



Ambulance



Fixed place monitor



Ship Monitor

Buying Guides

Packaging

1 unit with all standard accessories such as AV Cables/IO Cable/Power Cable/Key etc



AV Input Cables



AV Output Cable



IO Cables



Power Cable



Remote Control



CD (Manual & Software inside)

Neutral paper box or Color paper box with Logo Richmor printed,also welcome customized package.



Richmor Brand Package



Standard Package

Shipping

Strong cooperated with DHL/UPS Etc for fast and safety delivery.

- a. 2-5 days after payment cleared for sample order.
- b. 5-10 days after payment cleared depends on order quantity for bulk order.

PAYMENT INFO



Service

1. Well Trained Sales team and engineers for fast and professional support
2. OEM/ODM Service



CUSTOMER SATISFACTION

- Excellent Aftersale service
- 12 months warranty
- 24 hours customer service
- We understand the importance of our customers

Certifications

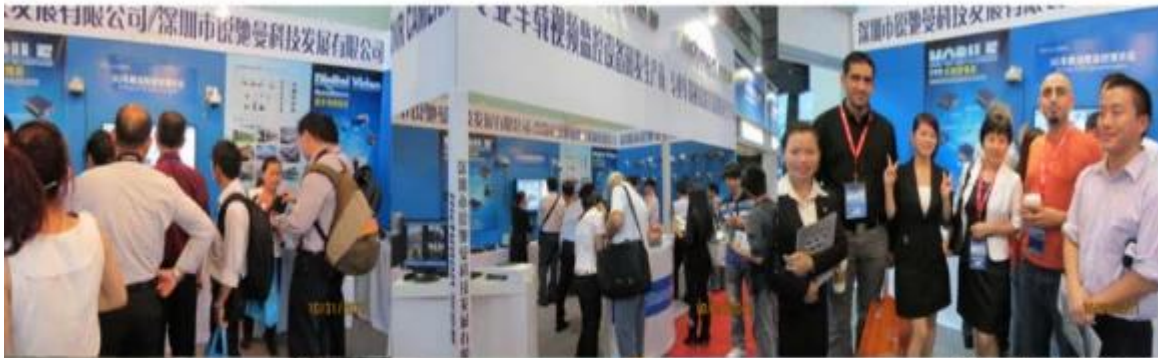
Certification



EXHIBITION

Richmor

CPSE2012 in Shenzhen



CPSE2013

10.29-10.31

4 Booth we have

Welcome you !!!



CPSE2012-- Guangdong TV Report-Shenzhen Richmor



ABOUTUS & CUSTOMERS





EXCELLENT SUPPORT



What is our expectation

Being your helpful and long term partner meeting your requirement.

Any question about your vehicle project, contact our representative Vicky.

Email: overseasales-7@rcmctv.com Skype: [rcmctvsales7](https://www.skype.com/en/contacts/overseasales7)