

With Free monitoring Software 1080P HD 2T HDD mobile Dvr for truck OEM customized 5CH DVR/NVR

(RCM-MDR 7105 Series)

**Remote Viewing Surveillance GPS WIFI 5CH HDD Mobile DVR With IPC Truck
solution**





功能特点 Features



实时视频
Real Time Video



运营调度
Fleet Management

GPS定位及轨迹回放
GPS Position and Path Track



安全报警
Security Alarm



油量管理
Oil Management



货物实时监控
Goods Security

- 采用高压压缩比，图像清晰的H.264编码格式，支持开机录像、定时录像及报警录像，支持ACC熄火延时录像。内置GPS全球定位系统，可通过3G网络远程查看实时视频，车辆位置，回放历史录像。支持手机远程监控。

Adopt H.264 Video Compression,support Auto Recording, Timed Recording,Alarm Recording,also ACC Power on/off Recording. Built-in GPS System,can view the real time video and Vehicle Position,replay Historical Video through 3G,Mobile Phone real time view supported.

- 具有线路调度，运营监控管理功能；可通过可视化调度指挥，语音广播、双向对讲、语音通话等信息交互，及时处理各种事件，比如堵车、车辆故障、交通事故等。

With Line Scheduling and operation management function;can handle all kinds of emergency thing such as heavy traffic,Vehicle Breakdown,traffic accident through Real time video, Broadcast,Intercom talk back function etc.

- 在地图上能连续自动以蓝色数字描述需监控车辆的运行路线，自动刷新实时查看车辆的最新位置。监控管理中心还可以在电子地图上远程回放车辆行驶的历史轨迹记录，重现车辆的行驶过程。

A blue mark in the map show the vehicle driving route automatically and continuous, refresh the Vehicle latest Position.Remote replay the vehicle driving route in map at center office.

- 通过配置疲劳驾驶检测仪，监测司机是否疲劳驾驶。危险驾驶，车道偏离并产生报警，从而保障司机驾驶车辆安全运行。

By configuring fatigue tester, monitoring whether the driver is fatigue driving, dangerous driving and lane departure,then generate alarm, so as to ensure the safety driving of the vehicle.

- 可实时监测油箱的油量状态，油量突然急剧变化时可触发报警，有效防止车辆被偷油事件的发生。

Real Time checking the Oil Tank condition,it will trigger alarm when oil suddenly changed,prevent the oil from stolen

- 通过给货物配置RFID智能电子锁，有效距离内能自动识别、收集货物信息，对货物运输的全过程实现不间断的实时监控，实时报警，使客户能实时掌握物流流向动态，确保货物运输过程中的有效监督。

By RFID Digital E-lock, can automatically identify and collect the goods information with a effective distance,monitor the goods in real time with alarm all the way for customer ensure the goods information and effective handle during vehicle on the way.

The Professional Mobile DVR Solution For Truck



Detail pictures

Remote Viewing Surveillance 3G 4G 5ch GPS WIFI HDD Mobile DVR/ NVR with 1 CH IPC



Remote Viewing Surveillance 3G 4G 5ch GPS WIFI HDD Mobile DVR/ NVR with 1 CH IPC



Product features

Remote Viewing Surveillance 3G 4G 5ch GPS WIFI HDD Mobile DVR/ NVR with 1 CH IPC

H.264 Compression Mode, Max support 5CH Million pixels HD video surveillance/ recording/ playback (**4CH real-time 720P Million Pixels AHD input or 4CH Analog Standard Definition camera input, or 2CH HD input+2CH SD input**) + **1CH 1080P IP Camera input** ; Exclusive pre-allocate DVR Special File System Technology,Solving repeatedly wipe cause file fragmentation, solving SD card file system collapse, data loss and cannot find SD card and file garbled, ensure the integrity of the data. 8-36V Adaptive Wide Voltage input, Super Low Power Consumption Design;HDD+SD card storage (maximum support 2TB 2.5" hard disk and 128GB SD card.) It can be completely resist car Vibration,Dust and others cause data corruption; Support GPS/BD/G-SENSOR ; High Reliability Aviation Connectors,High Cost Performance with reliable stability,simple and clear operation menu .

Remote Viewing Surveillance 3G 4G 5ch GPS WIFI HDD Mobile DVR/ NVR with 1 CH IPC

Front LED Indicators



Remote Viewing Surveillance 3G 4G 5ch GPS WIFI HDD Mobile DVR/ NVR with 1 CH IPC

Back Panel IO Indicators



Richmor surveillance GUI

The main menu includes: Search, System setup, Rec setup, Network setup, Alarm setup, Peripheral setup, System Tools, System Information, as below:



RCM-MDR7105 Parameter Sheet

Item		Parameter
OS		Linux
Language		English/Chinese/Customized
Video Compression		H.264 Compression
OSD		Overlays information such as date time and vehicle ID
GUI	Graphical User Interface	Setup system parameters with the remote control.
Video Record System	Video Input	4CH real-time 720p million pixels Analog HD input / 4CH analog standard definition input/2CH analog input+ 2CH HD mixed input+ 1CH 1080P network camera input), aviation connector, 1.0Vp-p, 75Ω
	Video Output	2CH CVBS output+1CH VGA output for optional,1.0Vp-p, 75Ω,Support 1CH Full Screen,4CH Screen view
	Preview	Support 1 channel and 4 channels preview, 5 channels splice preview Support Manual/ Alarm Trigger full screen preview
	Resolution	1080P/720P/D1/HD1/CIF, MAX:4 channels of 720P + 1080P / 4 channels of D1
	Image Quality	1-4 levels, 1 is the highest level.
	Video Standard	PAL: 100f/s , CCIR625 line,50field; NTSC: 120f/s, CCIR525 line,60field; CIF: 256Kbps ~ 1.5Mbps, 8 level video quality optional; HD1: 600Kbps ~ 2.5Mbps, 8 level video quality optional; D1: 800Kbps ~ 3Mbps, 8 level video quality optional; 720P: 4Mbps-6Mbps, multilevel video quality optional
	Record Mode	The default setting is auto recording after power on. Timed recording, alarm trigger recording and manual recording are supported.
Audio	Audio Input	4CH Aviation Plug Input
	Audio Output	2CH,headphone connect at front panel, BNC Connect on Back panel
	Compression	G.726 compression, 8KB/s speed
Alarm Input		7CH Alarm Input,1CH AD Input, impulse speed input,Alarm Linkage
Alarm Output		2CH Alarm Output,Support Light/ Sound alarm sensor,Oil/Power cut off
Interface		3CH RS232, POS/Fuel Sensor/ LED Advertisement Connection
		2CH 485 Interface,Connect PTZ Camera
Wireless Transmission		Support Built in 3G transmission,WCDMA, CDMA2000,GPRS, EDGE Built in 4G module optional, TDD-LTE, FDD-LTE
GPS Position		Support Built GPS/BD Module
	HDD	Max 2.5" HDD
Storage	SD Card	Max 128GB SD Card Mirror Recording Keep Data Safety
	Update	Support USB Updating, SD Card Updating, OTA Remote Updating
	File Format	H.264
	File System	Special FAT32 File System

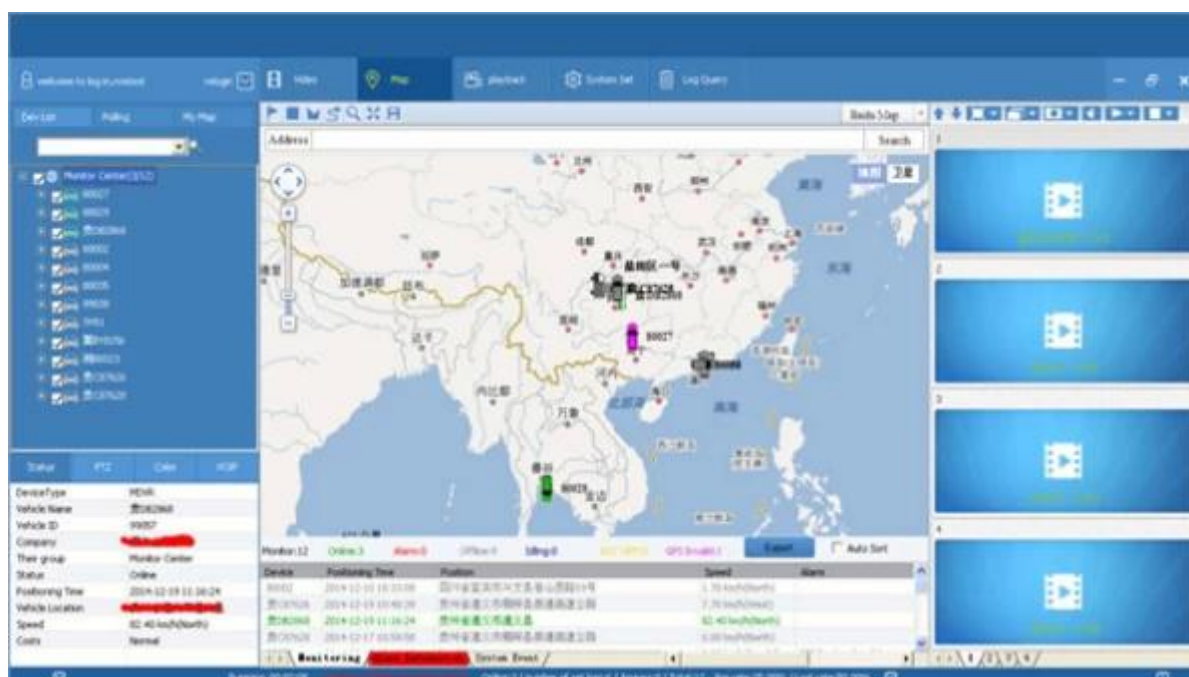
	USB	USB Interface on Front Panel for data back up by U Disk,Hard Disk
Record Replay	Video Search	Search By Record Time/Record Type etc
	Playback	Max support 4CH Replay /Stop/ Fast/Slow at same time
		Support forward and backward play at the speed of: x 2,x4,x8,x16.
Security		User/Admin 2 Level Different Password
Optional Functions	Voice Call	Support voice call each other
	TTS Voice Broadcast	Support TTS voice broadcast function.
	Serial Expand	Support LED Advertisement Panel Oil Sensor POS Bus Station Broadcaster Car OBD,ect. external device
Voltage & Power	Power Management	Wide Voltage.Support Timed/Delay off/ over-load/Reversing connection/voltage shortage/ short circuit etc.
	Input Voltage	DC:+6V - +36V
	Power	Working 5W
Working Environment	Temperature	-20℃ - +70℃
	Humidity	20% - 80%
Others	Size	200 mm* 187mm* 62mm
	Weight	1.90 Kg

Detail Features

1. Support 5CH video input, video recording and playback (4CH real-time 720p mega pixels Analog HD input /4CH analog standard definition input/2CH high definition & 2 CH analog standard definition mixed input+1CH 1080P network camera input)
2. 3CH video output (2CH CVBS video output,Support front and rear output; 1CH VGA output for optional)
3. Exclusive pre-allocate DVR Special File System Technology,Solving repeatedly wipe cause file fragmentation, solving storage file system crash, data loss and cannot find storage media and file garbled, ensure the integrity of the data.
4. 8-36V wide voltage with low power consumption. Support Reverse Protection
over-voltage/over-current protection.Output max to 10Amps current, support 12V & 5V peripheral equipment power supply. Ultra low power design;

5. Unique UPS Technology ensures the integrity of record when power failure occurs,even can last for 8-10s.
6. HDD+SD Card Storage (Support 2.5"HDD, max 128G SD Card) protect from Shock & Dust damage; support USB port data backup and device update;
7. Support 2 USB ports, data backup and equipment upgrades.
8. Support 9CH alarm input (1CH Analog input + 8CH IO alarm input),2CH Independent alarm output.
9. Support 2 CAN interface.
10. Support HDD heating functions,can work in harsh environment.
11. Support GPS/BD/G-Sensor Extension module;
12. Realize real-time monitor through 3G/4G;
13. Support Broadcast/Intercom/Text sent etc;can add oil sensor/temperature sensor/POS/LED Advertisement Panel;
14. Support OTG device upgrade automatically, , device can automatically upgrade version update, maintenance is more convenient
15. Support IOS/Android Phone Remote monitor
16. High reliability aviation connectors, high cost performance, stable and reliable.

Player software interface (CMSV6 In PC)



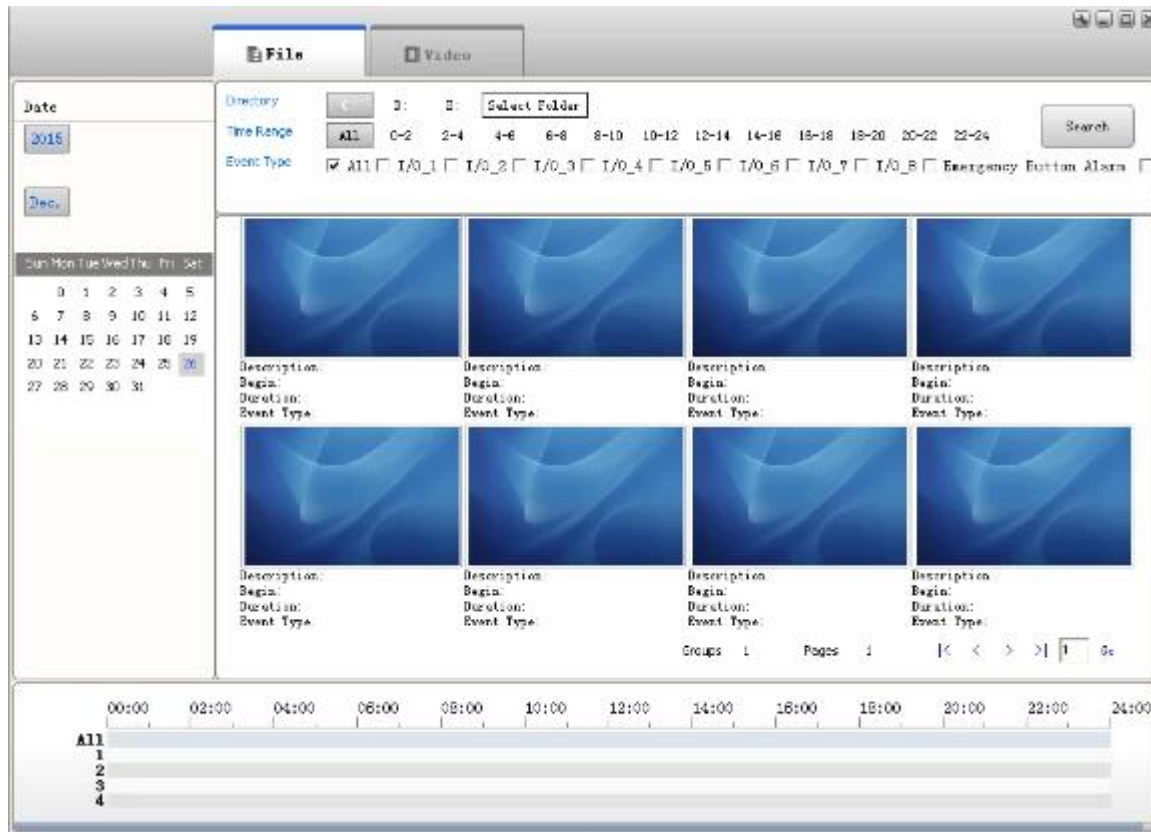
CMSV6 In Mobile Phone.

Have all in the palm of your hand

Real-time monitoring via Mobile Phone --Support iPhone, Android, iPad system



Surveillance platform Playback



Richmor Mobile DVR Mileage Summary

Vehicle Management System Welcome! 管理员 | Manager | Exit

Report | Device | User

Mileage Summary

Begin Time: 2016-01-08 00:00:00 To: 2016-01-08 16:27:09

Device: All Devices Select Device Query Export To Excel Export To Csv Export To Pdf

Index	Vehicle	Total Mileage (KM)	Begin Time	Start Mileage (KM)	Start Position	End Time	End Mileage (KM)
1	粤E23114	174.88	2016-01-08 09:03:32	22.95	22.53439, 114.00644	2016-01-08 16:25:41	157.83
2	粤E23130	202.07	2016-01-08 07:33:17	18.1	22.60429, 112.69292	2016-01-08 16:25:28	171.57
3	24312	277.42	2016-01-08 07:08:55	23.41	23.36862, 116.67527	2016-01-08 14:57:24	300.83
4	冀A76248	97.4	2016-01-08 00:00:25	299.97	41.572469, 118.708245	2016-01-08 09:42:38	41.09
5	24323	0	2016-01-08 00:00:07	18.26	37.758759, 120.731127	2016-01-08 16:19:07	18.26
6	鲁N5307	416.36	2016-01-08 06:08:54	96.66	35.483432, 117.643793	2016-01-08 16:20:11	82.63
7	鲁J81712	120.98	2016-01-08 04:48:40	28.51	35.976478, 117.681941	2016-01-08 14:25:07	144.92
8	粤N25250	45.81	2016-01-08 00:00:03	139.13	22.654294, 112.488993	2016-01-08 16:15:15	115.82
9	粤N25153	40.61	2016-01-08 00:00:27	92	22.654197, 112.497965	2016-01-08 16:11:28	73.72
10	粤N25388	111.72	2016-01-08 00:00:15	145.61	22.654321, 112.488645	2016-01-08 16:24:48	93.9
11	粤N25010	52.02	2016-01-08 00:00:10	93.24	22.654294, 112.497995	2016-01-08 16:15:55	57.92
12	鲁A8893	855.08	2016-01-08 00:00:29	354.36	35.958443, 117.658700	2016-01-08 16:24:44	1009.74
13	24358	224.42	2016-01-08 07:00:58	44.57	37.948798, 118.844370	2016-01-08 16:17:34	60.4
14	28999	2.38	2016-01-08 13:13:09	17.6	28.734460, 121.238847	2016-01-08 13:57:27	19.66
15	01568	369.29	2016-01-08 00:00:54	51.04	33.733005, 115.868921	2016-01-08 16:03:58	420.33

Richmor actual case



Application

Widely used in passenger car, bus, taxi, school bus, lorry, dangerous vehicle, personal car and ship etc.



Travelling Bus



Public Bus



Dangerous chemical car



Tobacco Logistics



Taxi



Truck



School Bus



Express Logistics



Road Police Car



Border Car



Traffic Inspection Car



Civil Work Vehicle



Escort Vehicle



Ambulance



Fixed place monitor



Ship Monitor

Buying Guides

Packaging

1 unit with all standard accessories such as AV Cables/IO Cable/Power Cable/Key etc



AV Input Cables



AV Output Cable



IO Cables



Power Cable



Remote Control



CD (Manual & Software inside)

Neutral paper box or Color paper box with Logo Richmor printed,also welcome customized package.



Richmor Brand Package



Standard Package

Shipping

Strong cooperated with DHL/UPS Etc for fast and safety delivery.

- a. 2-5 days after payment cleared for sample order.
- b. 5-10 days after payment cleared depends on order quantity for bulk order.

Payment



Service

- 1. Well Trained Sales team and engineers for fast and professional support
- 2. OEM/ODM Service



CUSTOMER SATISFACTION

- Excellent Aftersale service
- 12 months warranty
- 24 hours customer service
- We understand the importance of our customers

Certifications

Certification



Exhibition

Richmor

CPSE2012 in Shenzhen



CPSE2013

10.29-10.31

4 Booth we have

Welcome you !!!



CPSE2012-- Guangdong TV Report-Shenzhen Richmor



About us&Customers:





EXCELLENT SUPPORT



What is our expectation

Being your helpful and long term partner meeting your requirement.

Any question about your vehicle project, contact our representative Vicky.

Email: overseasales-7@rcmcctv.com Skype: [rcmcctvsales7](https://www.skype.com/en/contacts/overseasales7)