

Support people counting and RFID Function 4g 3g gps ahd mobile dvr

(RCM-MDR 7104 Series)

Product features

4CH gps 3g 4g wifi g-sensor mobile dvr with ahd resolution

1. H.264 Compression Mode, support 4CH real-time 720P Mega Pixel AHD input and Analog Standard Definition camera input, or 2ch HD input + 2CH SD input.
2. Exclusive pre-allocate DVR Special File System Technology, solving repeatedly wipe cause file fragmentation, solving SD Card file system collapse, data loss and cannot find SD CARD and file garbled, ensure the integrity of the data.
3. 8-36V Adaptive Wide Voltage input, Super low Power Consumption Design;
4. HDD+SD Card storage(maximum support 2TB 2.5'' Hard disk and 128GB SD Card.) It can be completely resist car Vibration, Dust and others cause data corruption;
5. Support GPS/BD/G-Sensor; High Reliability Aviation Connectors.
6. High Cost Performance with reliable stability, simple and clear operation menu.

RCM-MDR 7104 Series	
Model NO.	Function
RCM-MDR7104XXXI	Basic Recording,G-Sensor
RCM-MDR7104WGXX	3G, GPS, G-Sensor
RCM-MDR7104FGXX	3G, 4G, GPS, G-Sensor
RCM-MDR7104WGWX	3G, WIFI, GPS, G-Sensor
RCM-MDR7104FGWX	3G, 4G, WIFI, GPS, G-Sensor

Detail pictures

4CH gps 3g 4g wifi g-sensor mobile dvr with ahd resolution



4CH gps 3g 4g wifi g-sensor mobile dvr with ahd resolution



4CH gps 3g 4g wifi g-sensor mobile dvr with ahd resolution

Front LED Indicators



4CH gps 3g 4g wifi g-sensor mobile dvr with ahd resolution

Back Panel IO Indicators



Richmor surveillance GUI

The main menu includes: Search, System setup, Rec setup, Network setup, Alarm setup, Peripheral setup, System Tools, System Information, as below:

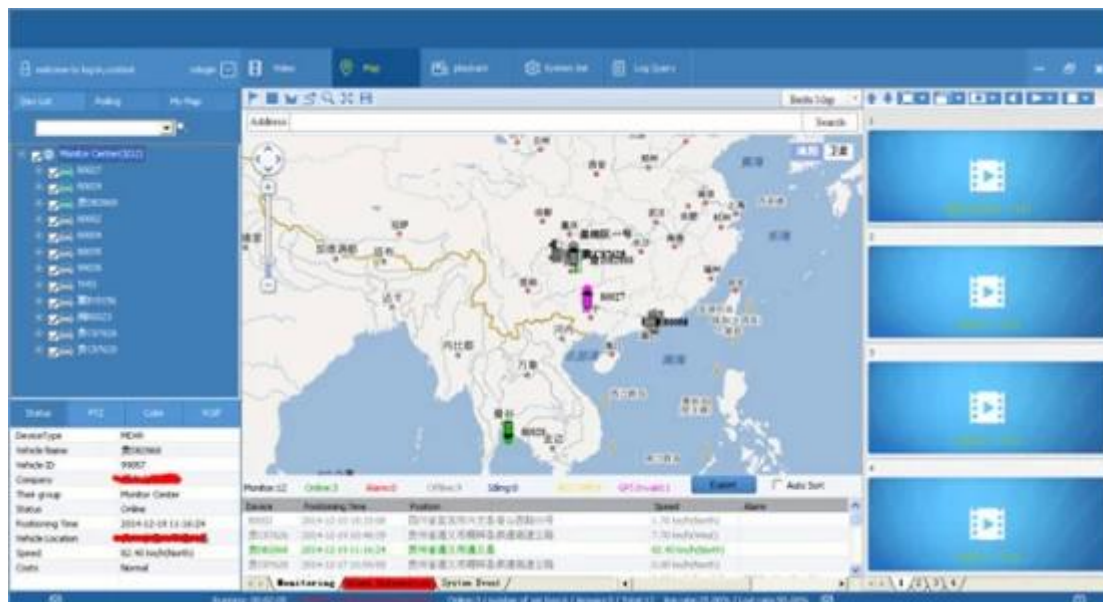


RCM-MDR7104 Parameter Sheet

Item		Parameter
OS		Linux
Language		English/Chinese/Customized
Video Compression		H.264 Compression
OSD		Overlays information such as date time and vehicle ID
GUI	Graphical User Interface	Setup system parameters with the remote control.
Video Record System	Video Input	4CH 720P AHD input/SD input/ mixed input,aviation connector, 1.0Vp-p, 75Ω
	Video Output	2CH CVBS+ VGA output for optional, 1.0Vp-p, 75Ω,Aviation,Support 1CH Full Screen, 4CH Screen view
	Preview	Support 1 channel and 4 channels preview., Support Manual/Alarm Trigger full screen preview
	Resolution	720P/D1/HD1/CIF, MAX:4 channels 720P and 4 channels D1
	Image Quality	0-7 levels, 0 is the highest level.
	Video Standard	PAL: 100f/s , CCIR625 line,50field; NTSC: 120f/s, CCIR525 line,60field; CIF: 256Kbps ~ 1.5Mbps, 8 level video quality optional; HD1: 600Kbps ~ 2.5Mbps, 8 level video quality optional; D1: 800Kbps ~ 3Mbps, 8 level video quality optional; 720P: 4Mbps-6Mbps, multi level video quality optional
	Record Mode	The default setting is auto recording after power on. Timed recording, alarm trigger recording and manual recording are supported.
Audio	Audio Input	4CH Aviation Plug Input
	Audio Output	2CH,headphone connect at front panel, BNC Connect on Back panel
	Compression	G.726 compression, 8KB/s speed
Alarm Input		7CH Alarm Input,1CH AD Input, impulse speed input,Alarm Linkage
Alarm Output		2CH Alarm Output,Support Light/ Sound alarm sensor,Oil/Power cut off
Interface		3CH RS232, POS/Fuel Sensor/ LED Advertisement Connection
		2CH 485 Interface,Connect PTZ Camera
		2CH CAN interface
Wireless Transmission		Support Built in 3G transmission, WCDMA, CDMA2000,GPRS, EDGE Built in 4G module optional, TDD-LTE, FDD-LTE
GPS Position		Support Built GPS/BD Module
	HDD	Max 2.5" 2TB HDD
Storage	SD Card	Max 128GB SD Card Mirror Recording Keep Data Safety
	Update	Support USB Updating, SD Card Updatin, OTA Remote Updating
	File Format	H.264
	File System	Special FAT32 File System

	USB	USB Interface on Front Panel for data back up by U Disk,Hard Disk
Record Replay	Video Search	Search By Record Time/Record Type etc
	Playback	Max support 4CH Replay /Stop/Fast/Slow at same time Support forward and backward play at the speed of: x 2,x4,x8,x16.
Security		User/Admin 2 Level Different Password
Optional Functions	Voice Call	Support voice call each other
	Serial Expand	Support LED Advertisement Panel□Oil Sensor□POS□Bus Station Broadcaster□ Car OBD,ect.external de vice
Voltage & Power	Power Management	Wide Voltage.Support Timed/Delay off
	Input Voltage	DC: +6V - +36V
	Power	Working □5W
	Temperature	-20℃ - +70℃
Working Environment	Humidity	20% - 80%
	Size	200 □D□* 187□W□* 62□H□ mm
Others	Weight	1.90 Kg

Player software interface (CMSV6 In PC)



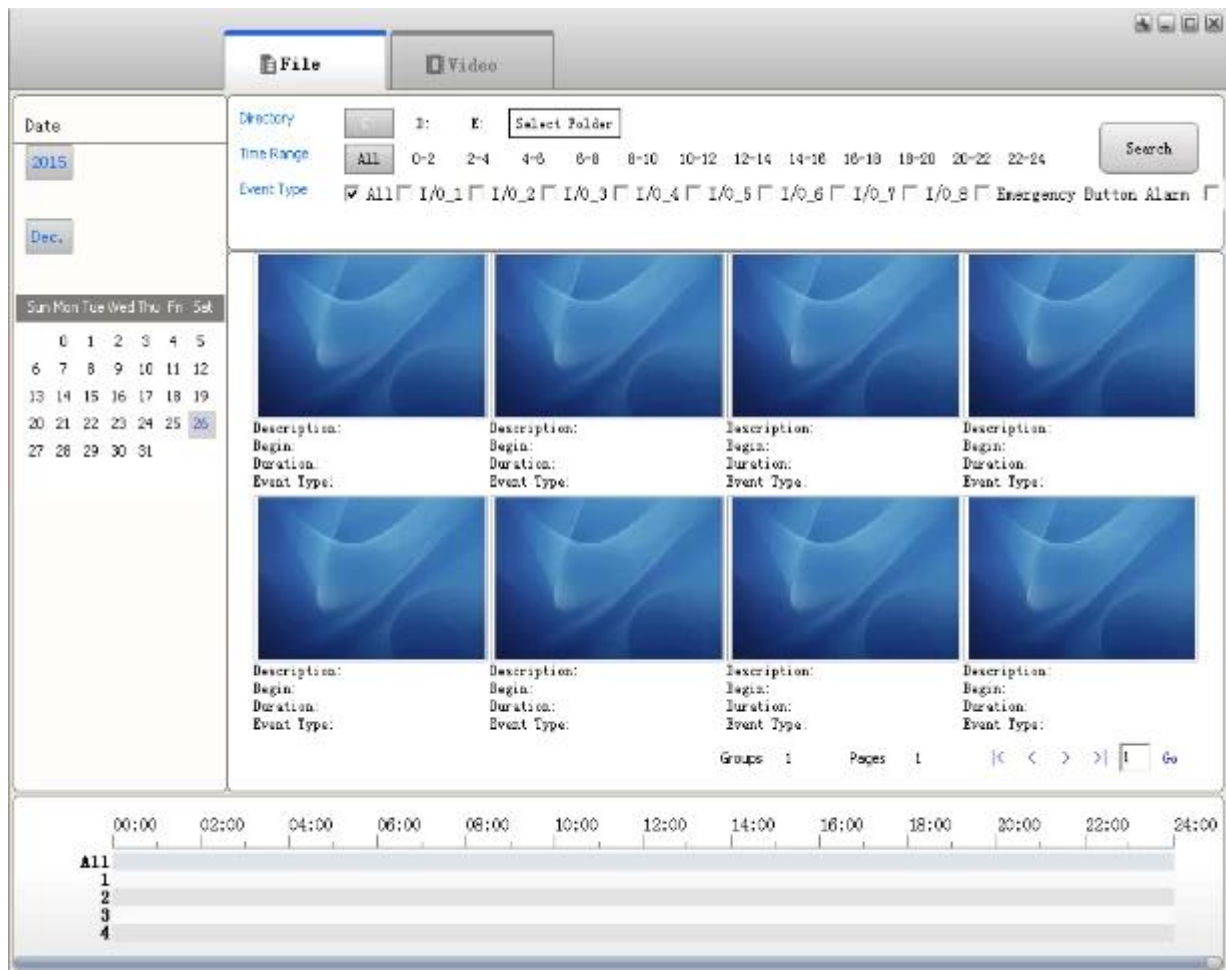
CMSV6 In Mobile Phone.

Have all in the palm of your hand

Real-time monitoring via Mobile Phone --Support iPhone, Android, iPad system



Surveillance platform Playback



Richmor Mobile DVR Mileage Summary


Vehicle Management System

Yajiong! 销售客户 | Manager | Exit

Report

Device

User



Mileage Summary

Begin Time: 2016-01-08 00:00:00 To: 2016-01-08 16:27:09

Device: All Devices

Select Device

Query

Export To Excel

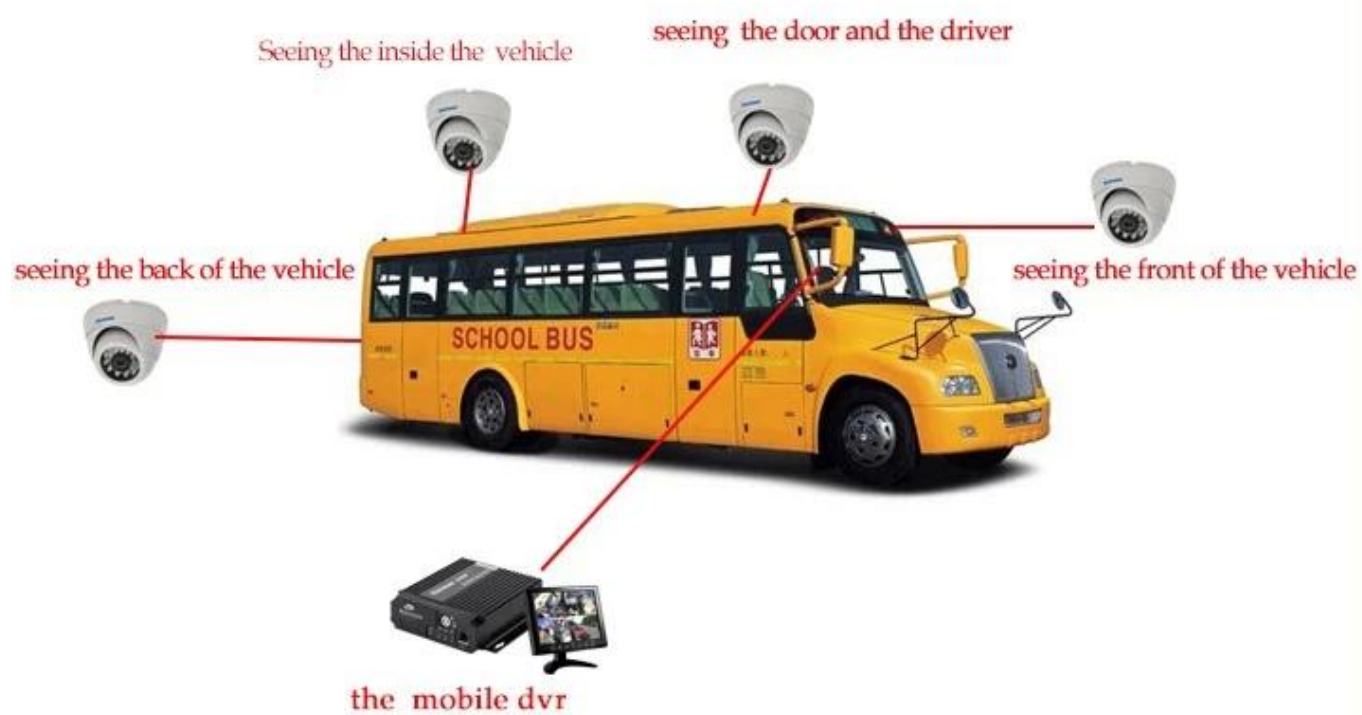
Export To Csv

Export To Pdf

Mileage Summary

Index	Vehicle	Total Mileage(KM)	Begin Time	Start Mileage(KM)	Start Position	End Time	End Mileage(KM)
1	粤B3114	174.88	2016-01-08 09:03:32	22.85	22.534264, 114.006444	2016-01-08 16:25:41	157.83
2	粤B3130	202.07	2016-01-08 07:33:17	18.1	22.684239, 112.652902	2016-01-08 16:25:28	171.57
3	24012	277.42	2016-01-08 07:09:55	23.41	23.368962, 118.675227	2016-01-08 14:57:24	300.83
4	冀A78248	97.4	2016-01-08 00:00:25	258.97	41.573485, 118.708245	2016-01-08 09:42:39	41.09
5	24023	0	2016-01-08 00:00:07	16.26	37.758759, 120.731127	2016-01-08 16:19:07	16.26
6	鲁QW538T	416.36	2016-01-08 06:09:54	96.88	35.462432, 117.643793	2016-01-08 16:20:11	92.83
7	鲁J81712	120.98	2016-01-08 04:48:40	26.51	35.878478, 117.681941	2016-01-08 14:25:07	144.90
8	粤B3250	45.81	2016-01-08 00:00:03	138.13	22.654394, 112.408933	2016-01-08 16:15:15	115.82
9	粤B05153	40.61	2016-01-08 00:00:27	82	22.654197, 112.497685	2016-01-08 16:11:28	73.72
10	粤B35368	111.72	2016-01-08 00:00:15	145.61	22.654321, 112.468845	2016-01-08 16:24:48	93.9
11	粤B5010	52.02	2016-01-08 00:00:10	93.24	22.654234, 112.497795	2016-01-08 16:15:55	57.82
12	鲁A43883	855.88	2016-01-08 00:00:29	354.36	35.952642, 117.658700	2016-01-08 16:24:44	1008.74
13	24058	224.42	2016-01-08 07:00:58	44.57	37.943788, 118.844070	2016-01-08 16:17:34	60.4
14	28998	2.36	2016-01-08 13:13:08	17.6	28.734423, 121.225947	2016-01-08 13:57:27	19.81
15	01568	369.29	2016-01-08 00:00:54	51.04	30.733005, 115.868821	2016-01-08 16:03:58	420.33

Remote Viewing Surveillance 3G 4G WIFI GPS Mobile DVR Taxi solution





功能特点 Features



实时监控, GPS定位
Real-time monitoring,
GPS positioning

身份验证, 人数统计
Two-factor authentication



语音功能 Voice features



行车记录, 驾驶行为管理
Driving behavior management



短信提醒
Assured SMS alerts



偏离预警
Yaw alarm

采用高压压缩比, 图像清晰的H.264编码格式, 支持开机录像、定时录像及报警录像, 支持ACC熄火延时录像。内置GPS全球定位系统, 可通过3G网络远程查看实时视频, 车辆位置, 回放历史录像。支持手机远程监控。Adopting H.264 Video compression with high resolution, ACC on/off, Timer Recording, ACC Delay Recording Mode supported. Built-in GPS Tracking system, Real time video stream, Vehicle Position, Video Replay can be viewed through 3G Network, Support Mobile Phone remote Monitor.

可连接刷卡器验证身份, 统计数据, 避免人工统计时出现失误。提供每个停靠站点实时的上下学生人数, 避免漏接学生, 以及把学生遗留在车内, 造成事故。Combine with Card Equipment for authenticate information and counting, avoid artificial statistical mistake, offer the students get on/off real time number at each station, avoid the accident caused by missing students or leaving students in the carriage.

可进行语音电话, 网络对讲, 声音广播。实现管理中心和车辆即时通讯。Support VOIP, 3G Intercom, Broadcast realize Center office communicate with Driver in real time.

对司机的不良行为进行监督, 比如经常超速、急加速、急减速、急刹车等容易对车内学生造成危险的行为; 并对其进行评测, 预防安全隐患发生。Supervise driver's bad behavior, such as: over-speed, acceleration, decelerateurgently, brakes etc dangerous behavior for students, Driver's Performance evidence.

车载智能系统会根据需要向家长发送孩子上下车短信, 包括什么时间、在哪里上车及下车, 让家长及时、快捷的了解学生安全状况, 有利于学生接送时间的精确控制。Intelligent vehicle system, students get on/off bus information sent to parents by SMS including When and where on/off, convenient for parents to know students status and easily for picking up students.

预先设定校车的固定行驶路线, 当校车未按照预定的行驶路线行驶时, 中心上会自动发出语音报警, 中心可与车载终端通过语音对讲进行通讯。Geo Fence Alarm, preset driving route, when out off the line it will sound alarm automatically at center office, center can talk with the driver for the information.

Richmor Actual Case



Application

Widely used in passenger car, bus, taxi, school bus, lorry, dangerous vehicle, personal car and ship etc.



Travelling Bus



Public Bus



Dangerous chemical car



Tobacco Logistics



Taxi



Truck



School Bus



Express Logistics



Road Police Car



Border Car



Traffic Inspection Car



Civil Work Vehicle



Escort Vehicle



Ambulance



Fixed place monitor



Ship Monitor

Buying Guides

Shipping Info

Estimated Shipping Time

- a. 3-5 working days after payment cleared for sample order.
- b. 5-10 working days after payment cleared depends on order quantity for bulk order.

Remarks:

- 1. Order will be dispatched before next 2 working day after full payment is done, 48 hours aging time;

2.Related documents will be sent after order is dispatched,please check mail;

3.All parcels will be shipped by DHL/TNT/UPS/EMS/FedEx/Air etc according your option;

Payment Info

1.T/T;Western Union;Paypal optional;

2.30% deposit,balance be paid before delivery

Remarks:

Please sent bank slip when payment done,according this we will arrange the production

Warranty Info

Free Replacement:

Mobile DVR Recorder can replace free under conditions within 15 days after sale,in the precondition of our quality problem,non-artificial damage

Supplier Warranty:

We offer ONE YEAR warranty on Vehicle Mobile DVR Recorder,if your item has any warranty issue please contact us for a satisfying solution

Remark:

All qualified returns/replacement must be guided by us,we may not accept your return without informing us in advance

Service

1. Well Trained Sales Team and strong engineers for fast and professional support.
2. OEM/ODM Service



CUSTOMER SATISFACTION

- Excellent Aftersale service
- 12 months warranty
- 24 hours customer service
- We understand the importance of our customers

Certifications



Exhibition

Richmor

CPSE2012 in Shenzhen



CPSE2013

10.29-10.31

4 Booth we have

Welcome you !!!



CPSE2012-- Guangdong TV Report-Shenzhen Richmor



About us&Customers:



EXCELLENT SUPPORT



What is our expectation

Being your helpful and long term partner meeting your requirement.

Any question about your vehicle project, contact our representative Vicky.

Email: overseasales-7@rcmcctv.com Skype: rcmcctvsales7