

Sim card Wireless 3G Mobile DVR 4CH Mobile CCTV DVR Kit for Truck/Bus/Taxi/Fuel Tank Fleet Management Real-time Monitoring

(RCM-MDR210 Series)

Remote Viewing Surveillance 3G 4G Mobile DVR Truck solution





功能特点 Features



实时视频
Real Time Video



运营管理
Fleet Management

GPS定位及轨迹追踪
GPS Position and Path Track



安全报警
Security Alarm



油量管理
Oil Management



货物实时监控
Goods Security

采用高压缩比，图像清晰的H.264编码格式，支持开机录像、定时录像及报警录像，支持ACC熄火延时录像。内置GPS全球定位系统，可通过3G网络远程查看实时视频，车辆位置，回放历史录像。支持手机远程监控。
Adopt H.264 Video Compression, support Auto Recording, Timed Recording, Alarm Recording, also ACC Power on/off Recording. Built-in GPS System, can view the real time video and Vehicle Position, replay Historical Video through 3G, Mobile Phone real time view supported.

具有线路调度，运营监控管理功能；可通过可视化调度指挥，语音广播、双向对讲、语音通话等信息交互，及时处理各种事件，比如塞车、车辆故障、交通事故等。
With Line Scheduling and operation management function; can handle all kinds of emergency thing such as heavy traffic, Vehicle Breakdown, traffic accident through Real time video, Broadcast, intercom talk back function etc.

在地图上能连续自动以蓝色数标描述需监控车辆的运行路线，自动刷新实时查看车辆的最新位置。监控管理中心还可以在电子地图上远程回放车辆行驶的历史轨迹记录，重现车辆的行驶过程。
A blue mark in the map show the vehicle driving route automatically and continuous, refresh the Vehicle latest Position. Remote replay the vehicle driving route in map at center office.

通过配置疲劳驾驶检测仪，监测司机是否疲劳驾驶，危险驾驶，车道偏离并产生报警，从而保障司机驾驶车辆安全运行。
By configuring fatigue tester, monitoring whether the driver is fatigue driving, dangerous driving and lane departure, then generate alarm, so as to ensure the safety driving of the vehicle.

可实时监测油箱的油量状态，油量突然急剧变化时可触发报警，有效防止车辆被偷油事件的发生。
Real Time checking the Oil Tank condition, it will trigger alarm when oil suddenly changed, prevent the oil from stolen

通过给货物配置RFID智能电子锁，有效距离内能自动识别，收集货物信息，对货物运输的全过程实现不间断的实时监控、实时报警，使客户能实时掌握物流流向动态，确保货物运输过程中的有效监管。
By RFID Digital E-lock, can automatically identify and collect the goods information with a effective distance, monitor the goods in real time with alarm all the way for customer ensure the goods information and effective handle during vehicle on the way.

The Professional Mobile DVR Solution For Truck



Product features

Remote Viewing Surveillance 3G 4G Mobile DVR

1. H.264 Compression Mode, support 4CH real-time 720P Mega Pixel AHD input and Analog Standard Definition camera input;
2. Exclusive pre-allocate DVR Special File System Technology, solving repeatedly wipe cause file fragmentation, solving SD Card file system collapse, data loss and cannot find SD CARD and file garbled, ensure the integrity of the data.
3. 10-36V Adaptive Wide Voltage input, Super low Power Consumption Design;
4. SD card storage (2SD cards, Each maximum support 128GB) It can be completely resist car Vibration. Dust and others cause data corruption;
5. Support GPS/BD/G-Sensor; High Reliability Aviation Connectors.
6. High Cost Performance with reliable stability, simple and clear operation menu.

Detail pictures

Remote Viewing Surveillance 3G 4G Mobile DVR



Device back view

Remote Viewing Surveillance 3G 4G Mobile DVR



Device front view

Remote Viewing Surveillance 3G 4G Mobile DVR

LED Indicators



Remote Viewing Surveillance 3G 4G Mobile DVR

Back Panel



Richmor surveillance GUI

The main menu includes: Search, System setup, Rec setup, Network setup, Alarm setup, Peripheral setup, System Tools, System Information, as below:



RCM-MDR210 Parameter Sheet

Item	Parameter	
OS	Linux	
Language	Chinese/English/Customized	
Video Compression	H.264	
OSD	Overlays information such as date time and vehicle ID	
GUI	Graphical User Interface Setup system parameters with the remote control.	
Video Record System	Video Input	4CH 720P AHD input/SD input/mixed video input, aviation connector, 1.0Vp-p, 75Ω
	Video Output	1CH CVBS+1CH VGA output, 1.0Vp-p, 75Ω,Aviation,Support 1CH Full Screen,4CH Screen
	Preview	Support 1 channel and 4 channels preview. Support Manual/Alarm Trigger full screen preview
	Resolution	720P/D1/HD1/CIF, MAX:4 channels 720P
	Video Quality	0-7 levels, 0 is the highest level.
	Video Standard	PAL: 100f/s , CCIR625 line,50field; NTSC: 120f/s, CCIR525 line,60field; CIF: 256Kbps ~ 1.5Mbps, 8 level video quality optional; HD1: 600Kbps ~ 2.5Mbps, 8 level video quality optional; D1: 800Kbps ~ 3Mbps, 8 level video quality optional; 720P: 4Mbps-6Mbps, multi level video quality optional
	Record Mode	The default setting is auto recording after power on. Timed recording, alarm trigger recording and manual recording are supported.
Audio	Audio Input	4CH ,Aviation Plug
	Audio Output	1CH,Aviation Plug
	Compression	G.726 compression, 8KB/s speed
Alarm Input	4Ch Alarm Input, kinds of alarm linkage support	

Alarm Output		1CH Alarm Output
Communication interface		1CH RS232 or 1CH RS485 for optional
Position		Support Built GPS/BD Module, built in G-sensor, can replay and analyse vehicle driven route.
wireless transmission		Support Built-in 3G/4G wireless transmission function, WCDMA, CDMA2000, TDD-LTE, FDD-LTE....
Motion Detection		Support motion detection alarm. (Can set the video recording duration time after alarm on platform.)
G-Sensor		Support G-sensor
Storage	SD	Dual SD Card,each max 128GB SD Card loop recording
	Upgrade	Support SD Card remote updating
	File Format	H.264
	File System	Special FAT32 File System
Video Playback	Video Search	Search By Record Time/Record Type etc
	Playback	Max support 4CH Replay /Stop/Fast/Slow at same time Support forward and backward play at the speed of: x 2,x4,x8,x16.
Voltage & Power	Power Management	Wide Voltage.Support Timed/Delay off
	Voltage Input	DC:+8V ~ +36V
	Power Consumption	Normal Working □14W , Stand-by status < 0.5W
	Temperature	-20°C to +70°C
Working Environment	Humidity	20% to 80%
	Password	User/Admin 2 Level Different Password
Security	Size	112(W) x36(H) x138(D) mm
others	Net Weight	360g

Richmor Mobile DVR Mileage Summary

Vehicle Management System Tel:0561 88888888 | Manager | Exit

Report Device User

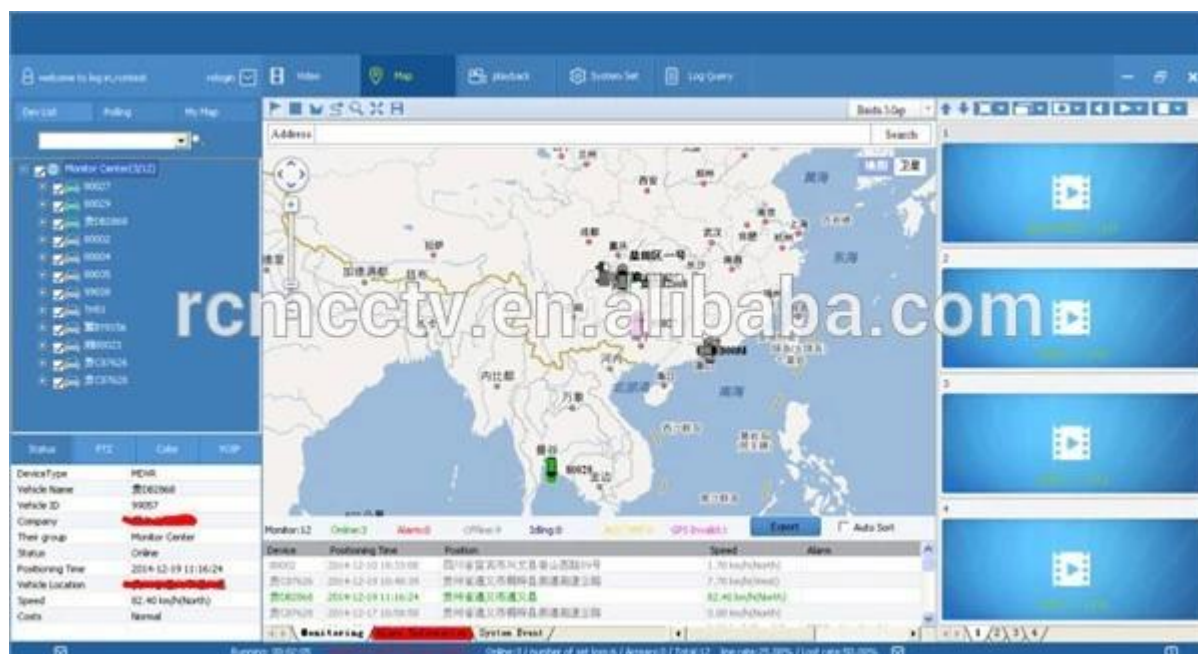
Mileage Summary

Begin Time: 2016-01-08 00:00:00 To: 2016-01-08 16:27:09

Device: All Devices

Index	Vehicle	Total Mileage(KM)	Begin Time	Start Mileage(KM)	Start Position	End Time	End Mileage(KM)
1	鄂E31114	174.88	2016-01-08 09:03:32	22.95	32 524274, 114 900444	2016-01-08 16:25:41	257.83
2	鄂E31130	202.97	2016-01-08 07:33:17	18.1	32 564258, 112 963902	2016-01-08 16:25:28	171.57
3	24012	277.42	2016-01-08 07:09:55	23.43	33 309562, 116 975227	2016-01-08 14:57:24	300.83
4	鄂A75248	97.4	2016-01-08 00:00:25	299.97	41 572988, 118 736249	2016-01-08 09:42:39	41.09
5	24023	0	2016-01-08 00:00:07	16.26	37 780758, 120 731127	2016-01-08 16:19:07	16.26
6	鄂Q95201	416.36	2016-01-08 06:06:54	96.66	35 961626, 117 842792	2016-01-08 16:20:11	92.63
7	鄂J01712	120.98	2016-01-08 04:48:40	26.53	35 878478, 117 863943	2016-01-08 14:25:07	244.82
8	鄂M5250	45.61	2016-01-08 06:00:03	139.13	32 694393, 112 688993	2016-01-08 16:15:15	115.82
9	鄂M3153	40.61	2016-01-08 00:00:27	92	33 854197, 112 487948	2016-01-08 16:11:28	73.72
10	鄂M3368	111.72	2016-01-08 00:00:15	145.41	32 894323, 112 939445	2016-01-08 16:24:48	53.9
11	鄂M9210	52.02	2016-01-08 00:00:18	93.24	32 694274, 112 497796	2016-01-08 16:15:55	87.92
12	鄂A3603	695.08	2016-01-08 00:00:29	354.36	35 909643, 117 832705	2016-01-08 16:24:44	1009.74
13	24058	224.42	2016-01-08 07:00:58	44.57	33 949798, 118 944970	2016-01-08 16:17:34	60.4
14	28999	2.36	2016-01-08 13:13:09	17.6	36 734620, 121 228947	2016-01-08 13:57:27	18.81
15	01568	389.29	2016-01-08 00:00:54	51.04	32 723306, 115 969012	2016-01-08 16:03:58	420.33

Player software interface



CMSV6 In Mobile Phone.

Have all in the palm of your hand

Real-time monitoring via Mobile Phone --Support iPhone, Android, iPad system



Richmor actual case



Application

Widely used in passenger car,bus,taxi,school bus,lorry,dangerous vehicle, personal car and ship etc.



Travelling Bus



Public Bus



Dangerous chemical car



Tobacco Logistics



Taxi



Truck



School Bus



Express Logistics



Road Police Car



Border Car



Traffic Inspection Car



Civil Work Vehicle



Escort Vehicle



Ambulance



Fixed place monitor



Ship Monitor

Buying Guides

Packaging

1 unit with all standard accessories such as AV Cables/IO Cable/Power Cable/Key et c

Neutral paper box or Color paper box with Logo Richmor printed,also welcome customized package.



Richmor Brand Package



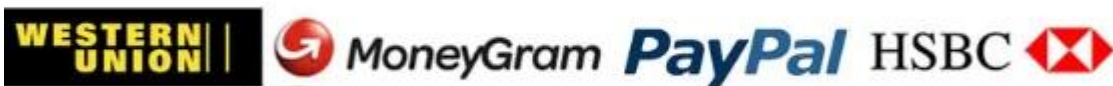
Standard Package

Shipping

Strong cooperated with DHL/UPS Etc for fast and safety delivery.

- a. 2-5 days after payment cleared for sample order.
- b. 5-10 days after payment cleared depends on order quantity for bulk order.

Payment



Service

- 1. Well Trained Sales team and engineers for fast and professional support
- 2. OEM/ODM Service



CUSTOMER SATISFACTION

- Excellent Aftersale service
- 12 months warranty
- 24 hours customer service
- We understand the importance of our customers

Certifications



Exhibition

Richmor

CPSE2012 in Shenzhen



CPSE2013

10.29-10.31

4 Booth we have

Welcome you !!!



CPSE2012-- Guangdong TV Report-Shenzhen Richmor



About us&Customers:



EXCELLENT SUPPORT



What is our expectation

Being your helpful and long term partner meeting your requirement.

Any question about your vehicle project, contact our representative Vicky.

Mob/Whatsapp: +86 18929318475 Skype: rcmctvsales7