

# **SD card storage mobile dvr for bus ,wifi gps 3g sim card vehicle dvr recorder**

## **Main Feature:**

1. 4 channel SD card Mobile DVR
2. Support 3G, GPS, WIFI, G-sensor, UPS function
3. Support PTZ remote control
4. Support real-time surveillance
5. Supports SD overwritten by days
6. Supports backup and upgrade with SD card
7. Self recovery after power reconnected
8. Stable aluminum alloy structure with shock absorber

## **Pictures**





## Specification:

Items	Device parameters	Performance index
<b>Name</b>	Product Name	4 Channel Mobile DVR(SD Storage)
<b>System</b>	Operation System	Linux
	Operation Interface	Graphical Interfaces, Chinese/English optional
	File System	Proprietary Format
	System Privileges	User Password
<b>Video</b>	Video Input	4ch SDI Independent Input: 1.0Vp-p $\square$ 75 $\Omega$ .Both B&W and Color Cameras
	Video Output	1 Channel PAL/NTSC Output, 1.0Vp-p $\square$ 75 $\Omega$ Composite Video Signal
	Video Display	1 Or 4 Screen Display
	Video Standard	PAL:25frames/Sec;NTSC:30frames/Sec
	System Resources	PAL:100 Frames; NTSC:120 Frames
<b>Audio</b>	Audio Input	Four Channels Independent Input 500 $\Omega$
	Audio Output	1 Channel(4 Channels Can Be Convert Freely)
	Basic Output Level	1.0—2.2V
	Distortion Plus Noise	$\leq$ -30dB
	Recording Mode	Sound And Image Synchronization
	Audio Compression	ADPCM
<b>Alarm</b>	Alarm in	4 Channels Independent Input. High Voltage Trigger
	Alarm out	2 Channels Independent output
	Move Detect	available
<b>Network Interface</b>	Wire line Access	Can Expand One RJ45 Ethernet Port
	Wifi	Can Expand One Wifi Module Inside
	3G	Can Expand One WCDMA or CDMA2000 Module Inside
<b>GPS Interface</b>	GPS	Can Expand GPS Module inside
<b>Extend Interface</b>	Intercom	Can Expand Intercom Module Inside
	G-Sensor	Can Expand G-Sensor Module Inside

<b>Others</b>	Power Consumption	DC8-36V 5% ≤10W
	Working Temperature	-20°C ~ +85°C ≤80%
	Clock	Built-In Clock, Calendar
<b>Packaging</b>	Product Size	138(L)*112(W)*36(H)mm
	Product Net Weight	360g

## Our CMS software For Windows PC real-time Surveillance

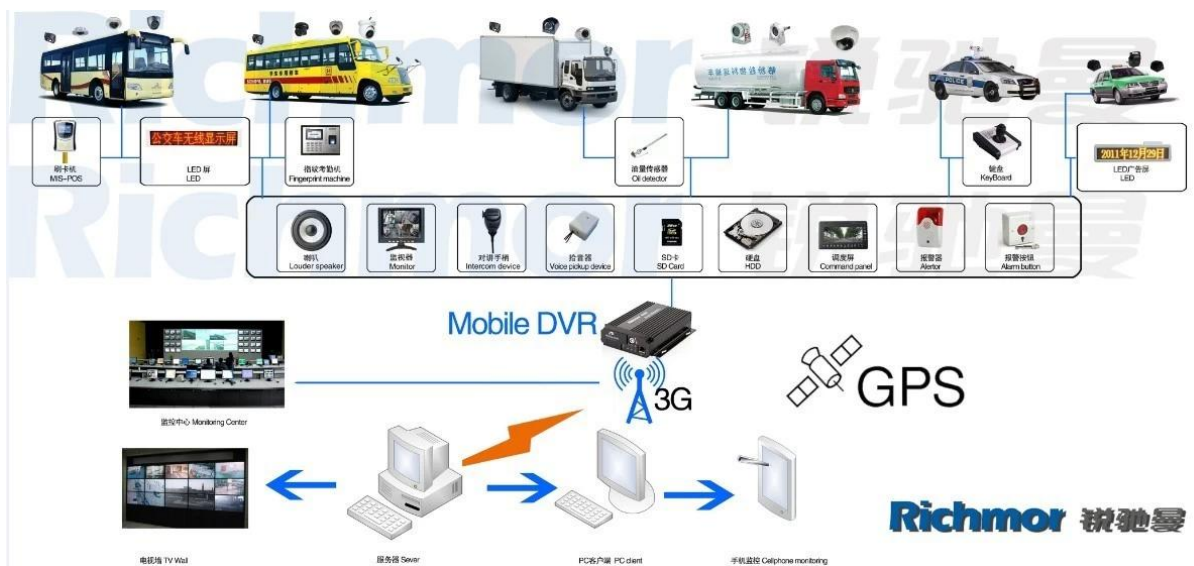
**Vehicle with device for test in AC Coach  
Lahore to Sadiq Abad near motorway @ 86Km/h**

The screenshot displays the CMS software interface for real-time surveillance. The main window features a Google Map of Lahore, Pakistan, with a vehicle tracking overlay. A pop-up window provides details for the device ALI01, including its time (2013-11-02 21:59:50), speed (86.00 km/h), position (Katar Bund Road, Lahore, Pakistan), and alarm status (ACC ON, SD Card Exist, 3G Signal Normal). The interface also includes a top menu bar with options like Map, Video, Track, Record, and Other, and a bottom status bar showing monitoring and alarm information.

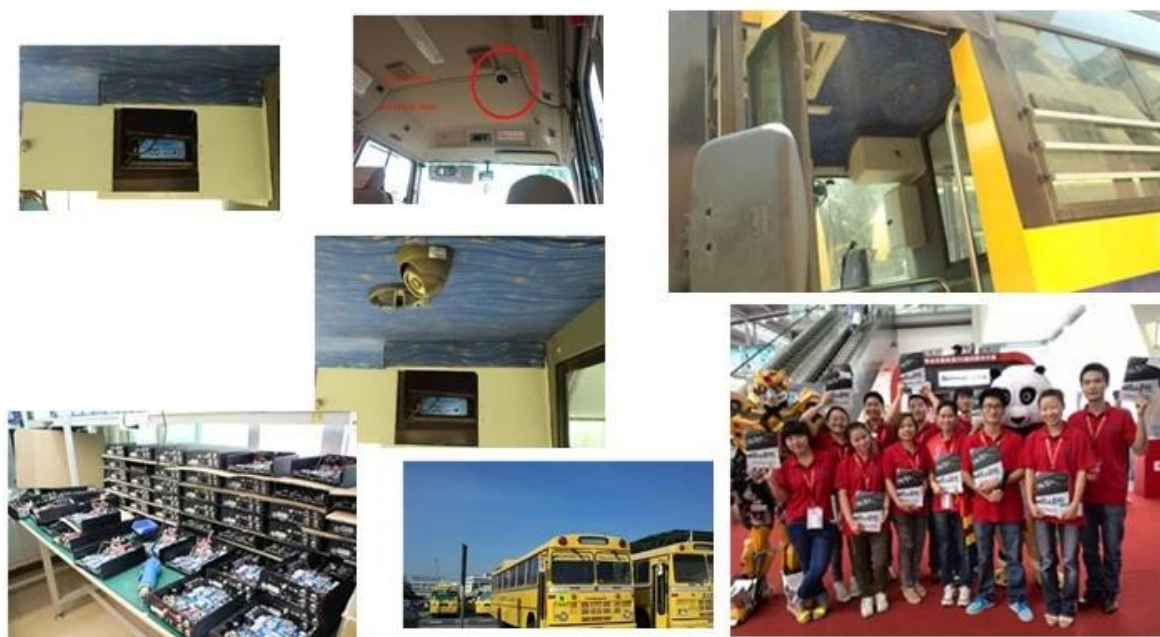
## For IOS & Android OS Mobile Phone Surveillance



## Our Mobile DVR project for vehicles







 <b>Verification of Conformity</b> Reference No.: L2/03/0301/07	
<b>Responsible Party</b>	Sherston Robur Technology Development Co., LTD.
<b>Address</b>	3/F, 3rd Floor West Longgang Road, Longgang New District, Shenzhen, China
<b>Product</b>	Cameras
<b>Model No.</b>	R0M-PC2H, R0M-PC2H, R0M-LPC4H, R0M-PC2H, R0M-BP2H, R0M-BP2H, R0M-SL, R0M-AE, R0M-LAE, R0M-JAE, R0M-AB, R0M-ABW, R0M-ABW, R0M-ABW, R0M-ABW, R0M-BD2H, R0M-BD2H, R0M-BD2H, R0M-BD2H
<b>Trade Mark</b>	Roburcam
<b>Standards</b>	FCC CFR 47 Part 15 Subpart B; CEI, ANSI C83 A-2000
<b>Important note:</b> This document is in accordance with Part 14 of the FCC Rules and Regulations for radio frequency devices. Declaration of Warrantee is subject to the following conditions: (1) This service may not cause harmful interference, and (2) this device must accept any interference received, including interference that may cause undesired operation. We intend to conform to the applicable FCC Rules and Regulations. The method of testing was in accordance to the most accurate measurement standards possible, and that all necessary steps have been enforced to ensure that an evaluator copy of the same agreement will continue to comply with the Federal Communications Commission's requirements.	
 Manager April 10, 2010	
Shenzhen L2C Compliance Testing Laboratory Ltd. 1/F, Angang Industrial Park, Tangbu Street, Bao'an Dist., Shunde District, Shenzhen Guangdong, China Tel: (86)755-82591100 Fax: (86)755-82591010 Web: www.L2C.com.cn E-mail: shenzhen_l2c@163.com	

## **Purchasing Details:**

**Payment terms:** T/T, Western Union, MoneyGram, Paypal

**Delivery time:** Within 5 working days after confirm the payment.

**Warranty:** 12 months

**Shipping way:** DHL, UPS, FedEx, EMS, TNT etc.

## **Packing way:**



remcctv.en.alibaba.com  
brand Packing & Blister Packing



### After-sales Service:

1. After you receive our products, we will assist you to realize how to use it.
2. Offer you the software if you use our mobile DVR.
3. Twelve months warranty
4. During our warranty, if you have any problem, we can help you to solve it.
5. During our warranty, you can return to us to repair it.





# Richmor

OEM & ODM Service

Brasil World Cup Supplier



Inner Training after study from Alibaba in July



Technical Training For Fast Response to Customer Richmor 锐驰曼



lecturer for Execution

Email: [overseasales-2@rcmcctv.com](mailto:overseasales-2@rcmcctv.com)

Skype: [rcmcctvsales2](https://www.skype.com/name/rcmcctvsales2)

QQ: [2355778097](https://www.qq.com/2355778097)

Website: [www.rcmcctv.com](http://www.rcmcctv.com), <http://www.richmor.net/> [www.rcmcctv](http://www.rcmcctv.com)

[.en.alibaba.com](https://www.en.alibaba.com)

**MB:** +86 18929314790