

Richmor UPS function 3G Built-in GPS Support IOS/Android Monitor RCM-MDR7104 Series

Main Feature:

1. 4 channel HD & SD card Mobile DVR
2. Support 3G, 4G,GPS, WIFI, G-sensor, UPS function
3. Support PTZ remote control
4. Support real-time surveillance
5. Supports HD overwritten by days
6. Supports backup and upgrade with HD & SD card
7. Self recovery after power reconnected
8. Stable aluminum alloy structure with shock absorber

Pictures

4 channels GPS 3G sim card car mobile dvr

RCM-MDR7104

MEGA PIXELS HD HDD MOBILE DVR

百万高清车载硬盘录像机



4 channels GPS 3G sim card car mobile dvr

Back Panel IO Indicators



4 channels GPS 3G sim card car mobile dvr

Front LED Indicators



RCM-MDR7104 Parameter Sheet

Item	Parameter	
OS	Linux	
Language	English/Chinese/Customized	
Video Compression	H.264 Compression	
OSD	Overlays information such as date time and vehicle ID	
GUI	Graphical User Interface Setup system parameters with the remote control.	
Video Record System	Video Input	4CH 720P AHD input/SD input/ mixed input,aviation connector, 1.0Vp-p, 75Ω
	Video Output	2CH CVBS+ VGA output for optional, 1.0Vp-p, 75Ω,Aviation,Support 1CH Full Screen, 4CH Screen view
	Preview	Support 1 channel and 4 channels preview., Support Manual/Alarm Trigger full screen preview
	Resolution	720P/D1/HD1/CIF, MAX:4 channels 720P and 4 channels D1
	Image Quality	0-7 levels, 0 is the highest level.
	Video Standard	PAL: 100f/s , CCIR625 line,50field; NTSC: 120f/s, CCIR525 line,60field; CIF: 256Kbps ~ 1.5Mbps, 8 level video quality optional; HD1: 600Kbps ~ 2.5Mbps, 8 level video quality optional; D1: 800Kbps ~ 3Mbps, 8 level video quality optional; 720P: 4Mbps-6Mbps, multi level video quality optional
	Record Mode	The default setting is auto recording after power on. Timed recording, alarm trigger recording and manual recording are supported.
Audio	Audio Input	4CH Aviation Plug Input
	Audio Output	2CH,headphone connect at front panel, BNC Connect on Back panel
	Compression	G.726 compression, 8KB/s speed
Alarm Input	7CH Alarm Input,1CH AD Input, impulse speed input,Alarm Linkage	
Alarm Output	2CH Alarm Output,Support Light/ Sound alarm sensor,Oil/Power cut off	
Interface		3CH RS232, POS/Fuel Sensor/ LED Advertisement Connection
		2CH 485 Interface,Connect PTZ Camera
		2CH CAN interface

Wireless Transmission		Support Built in 3G transmission, WCDMA, CDMA2000,GPRS, EDGE Built in 4G module optional, TDD-LTE, FDD-LTE
GPS Position		Support Built GPS/BD Module
Storage	HDD	Max 2.5" 2TB HDD
	SD Card	Max 128GB SD Card Mirror Recording Keep Data Safety
	Update	Support USB Updating, SD Card Updatin, OTA Remote Updating
	File Format	H.264
	File System	Special FAT32 File System
Record Replay	USB	USB Interface on Front Panel for data back up by U Disk,Hard Disk
	Video Search	Search By Record Time/Record Type etc
	Playback	Max support 4CH Replay /Stop/Fast/Slow at same time Support forward and backward play at the speed of: x 2,x4,x8,x16.
Security		User/Admin 2 Level Different Password
Optional Functions	Voice Call	Support voice call each other
	Serial Expand	Support LED Advertisement Panel Oil Sensor POS Bus Station Broadcaster Car OBD,ect.external device
Voltage & Power	Power Management	Wide Voltage.Support Timed/Delay off
	Input Voltage	DC:+6V - +36V
	Power	Working 5W
	Temperature	-20°C - +70°C
Working Environment	Humidity	20% - 80%
	Size	200 D* 187W* 62H mm
Others	Weight	1.90 Kg

Richmor Transit bus Solution





功能特点 Features



实时监控, GPS定位
Real-time monitoring,
GPS positioning

自动报站
Stop Automatically



公交一卡通 Fare Machine



运营调度
Managing Bus Scheduling



广告发布
Advertising



语音功能
Voice features

- 采用高压倍比, 图像清晰的H.264编码格式, 支持开机录像、定时录像及报警录像, 支持ACC熄火延时录像。内置GPS全球定位系统, 可通过3G网络远程查看实时视频, 车辆位置, 回放历史录像。支持手机远程监控。Adopting H.264 Video compression with high resolution, ACC on/off, Timer Recording, ACC Delay Recording Mode supported, Built-in GPS Tracking system, Real time video stream, Vehicle Position, Video Replay can be viewed through 3G Network, Support Mobile Phone remote Monitor.

- 全自动语音报站, 支持安全乘车提示、换乘车提示、超速行车提示和整点报时, 报站方式支持手动报站或GPS自动报站。Automatic Voice Stop Inform, support Safety Tips, Transfer Bus tips, Overspeed tips and Hour Time Inform, Stop inform including Manual or GPS Automatic.

- 可连接公交刷卡机, 自动接收并存储后台调度系统下发的收费表, 进行公交刷卡消费, 统计各种消费数据。Combine with POS Equipment, automatic receive and store the fees sent by scheduling system, statistics all kind of consumer data.

- 运营管理系统功能包括: 车辆GPS系统、电子排班系统、GIS电子地图系统、车辆运行管理系统和营运数据统计。Bus Fleet Management System Including: GPS System, Electronic Scheduling, GIS Electronic Map, Vehicle Operation management system and data management.

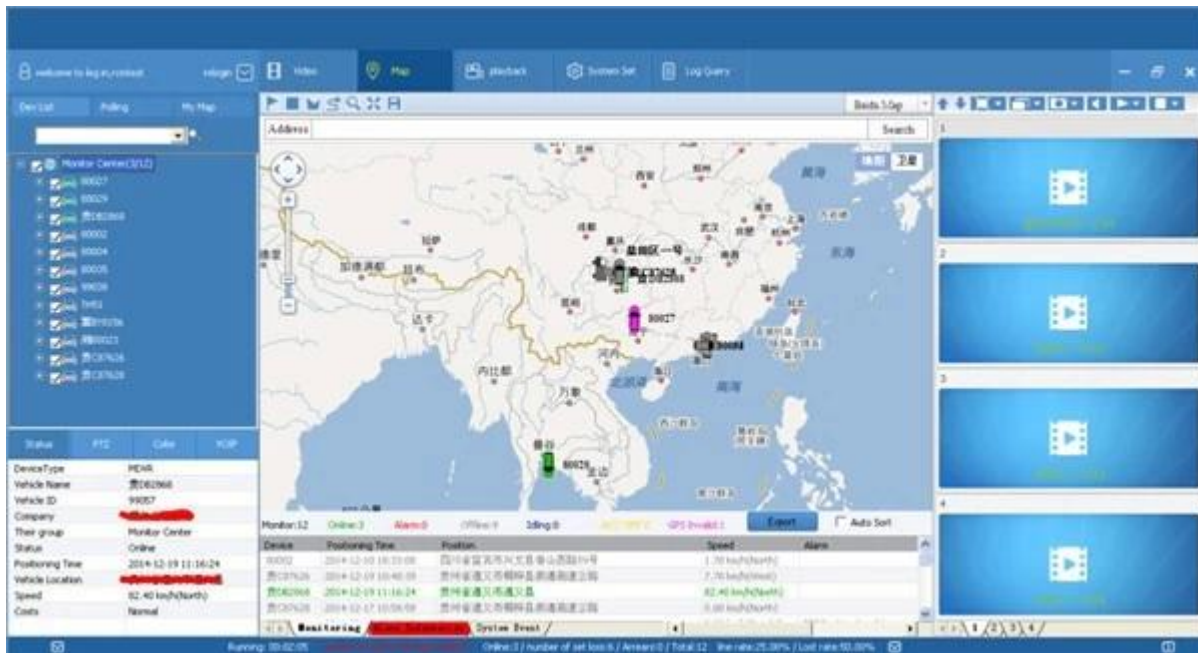
- 控制和下发LED显示屏的显示信息, 包括商业信息、公益信息、政府的方针政策、交通信息、天气预报等各种信息。Control and sent LED information, including Commercial Business Information, Public Information, Government Policy, Traffic Information, Weather Forecasts and so on.

- 可进行语音电话, 网络对讲, 声音广播。实现管理中心和车辆即时通讯。Support VOIP, 3G Intercom, Broadcast realize Center office communicate with Driver in real time.

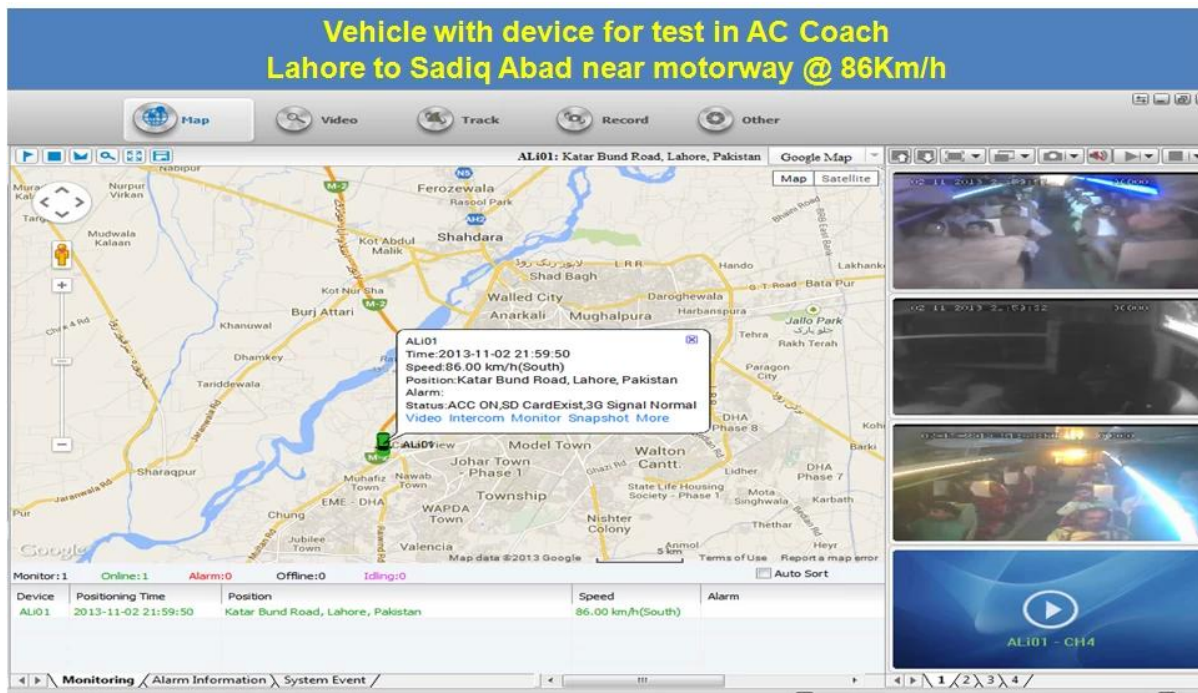
Professional Mobile DVR Solution for Bus



For Windows PC real-time Surveillance



Vehicle with device for test in AC Coach Lahore to Sadiq Abad near motorway @ 86Km/h



For IOS & Android OS Mobile Phone Surveillance



Mileage Summary

Vehicle Management System Welcome! 销售客户 | Manager | Exit

Report Device User

Mileage Summary

Begin Time: 2016-01-08 00:00:00 To: 2016-01-08 16:27:09

Device: All Devices Select Device Query Export To Excel Export To Csv Export To Pdf

Index	Vehicle	Total Mileage (KM)	Begin Time	Start Mileage (KM)	Start Position	End Time	End Mileage (KM)
1	粤EX3114	174.88	2016-01-08 09:03:32	22.95	22.534264, 114.008444	2016-01-08 16:25:41	157.83
2	粤EX3130	202.07	2016-01-08 07:33:17	18.1	22.884299, 112.892602	2016-01-08 16:25:28	171.57
3	24012	277.42	2016-01-08 07:09:55	23.41	23.369582, 116.675227	2016-01-08 14:57:24	300.83
4	冀A78248	97.4	2016-01-08 00:00:25	299.97	41.572469, 118.788245	2016-01-08 09:42:39	41.09
5	24023	0	2016-01-08 00:00:07	16.26	37.758759, 120.731127	2016-01-08 16:19:07	16.26
6	鲁QWS367	416.36	2016-01-08 06:09:54	96.66	35.461432, 117.643793	2016-01-08 16:20:11	92.83
7	鲁J81712	120.98	2016-01-08 04:48:40	26.51	35.876478, 117.681941	2016-01-08 14:25:07	144.92
8	粤HG5250	45.81	2016-01-08 00:00:03	139.13	22.654394, 112.498593	2016-01-08 16:15:15	115.82
9	粤HG5153	40.61	2016-01-08 00:00:27	92	22.654197, 112.497665	2016-01-08 16:11:28	73.72
10	粤HG5368	111.72	2016-01-08 00:00:15	145.61	22.654321, 112.498645	2016-01-08 16:24:48	93.9
11	粤HG5010	52.02	2016-01-08 00:00:10	93.24	22.654234, 112.497795	2016-01-08 16:15:55	57.92
12	鲁AA3683	655.08	2016-01-08 00:00:29	354.36	35.950643, 117.659700	2016-01-08 16:24:44	1009.74
13	24058	224.42	2016-01-08 07:00:58	44.57	37.949788, 118.844070	2016-01-08 16:17:34	60.4
14	28999	2.36	2016-01-08 13:13:09	17.6	28.734420, 121.235847	2016-01-08 13:57:27	19.81
15	01568	369.29	2016-01-08 00:00:54	51.04	33.733305, 115.868921	2016-01-08 16:03:58	420.33

Surveillance platform Playback

The screenshot shows a software application window with the following components:

- Navigation:** 'File' and 'Video' tabs at the top.
- Date Selection:** A 'Date' section with '2015' and 'Dec.' buttons, and a calendar grid for the month of December.
- Search and Filters:** A 'Directory' section with 'C:', 'D:', and 'E:' dropdowns, a 'Select Folder' button, and a 'Search' button. Below it, a 'Time Range' section with 'All' and buttons for 0-2, 2-4, 4-6, 6-8, 8-10, 10-12, 12-14, 14-16, 16-18, 18-20, 20-22, and 22-24. An 'Event Type' section with checkboxes for 'All', 'I/O_1', 'I/O_2', 'I/O_3', 'I/O_4', 'I/O_5', 'I/O_6', 'I/O_7', 'I/O_8', and 'Emergency Button Alarm'.
- Event Grid:** A 2x4 grid of event thumbnails. Each thumbnail is a blue-tinted image with a white overlay. Below each thumbnail are labels for 'Description:', 'Begin:', 'Duration:', and 'Event Type:'.
- Summary:** At the bottom right of the grid, it shows 'Groups 1' and 'Pages 1' with navigation arrows and a 'Go' button.
- Timeline:** A horizontal timeline at the bottom with markers from 00:00 to 24:00 in 2-hour increments. Below the timeline, there are horizontal bars representing event durations for categories 'All', '1', '2', '3', and '4'.

Application

Widely used in passenger car, bus, taxi, school bus, lorry, dangerous vehicle, personal car and ship etc.



Travelling Bus



Public Bus



Dangerous chemical car



Tobacco Logistics



Taxi



Truck



School Bus



Express Logistics



Road Police Car



Border Car



Traffic Inspection Car



Civil Work Vehicle



Escort Vehicle



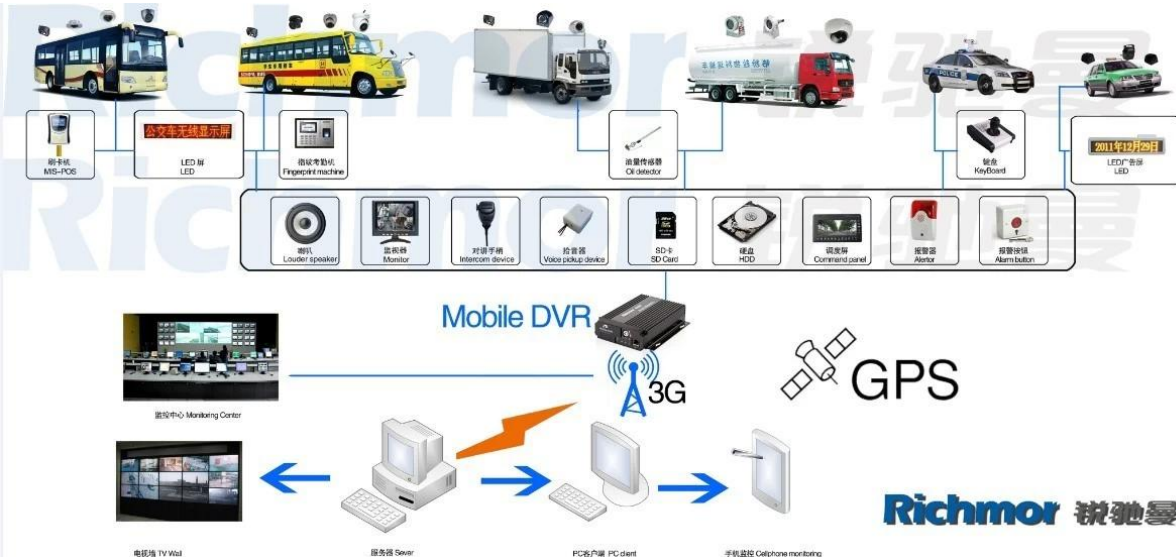
Ambulance



Fixed place monitor



Ship Monitor



Certification:

Certification



Related Products:



SD Mobile DVR with 3G GPS



SD Mobile DVR with WIFI 3G GPS G-Sensor

Cooperation Terms:

Payment terms: T/T, Western Union, MoneyGram, Paypal

Delivery time: Within 5 working days after confirm the payment.

Warranty: 12 months

Shipping way: DHL, UPS, FedEx, EMS, TNT etc.

Packing ways:



Richmor Brand Package



Standard Package

After-sales Service:

1. After you receive our products, we will assist you to realize how to use it.
2. Offer you the software if you use our mobile DVR.
3. Twelve months warranty
4. During our warranty, if you have any problem, we can help you to solve it.
5. During our warranty, you can return to us to repair it.

Remark: All qualified returns/replacement must be guided by us, or won't accept your return without informing us in advance.

About Us



Richmor

OEM & ODM Service

Brasil World Cup Supplier



Inner Training after study from Alibaba in July



Technical Training For Fast Response to Customer Richmor 锐驰曼



lecturer for Execution

EXCELLENT SUPPORT



What is our expectation

Being your helpful and long term partner meeting your requirement.

Any question about your vehicle project, contact our representative Vicky.

Mob/Whatsapp:+86 18929318475 Skype: rcmctvsales7