

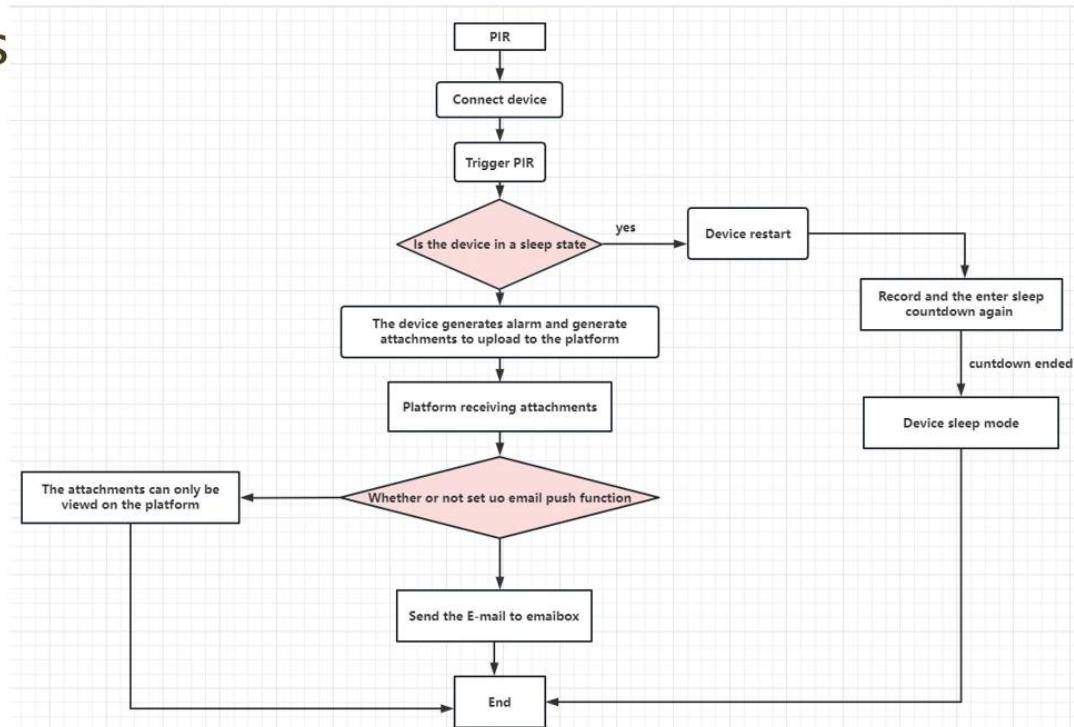




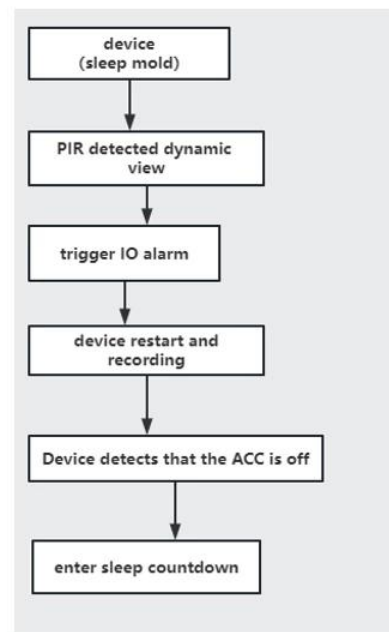
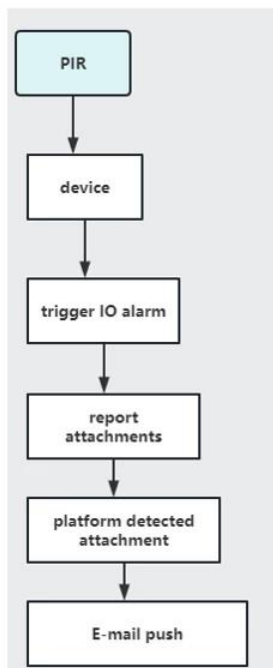
PIR is a device that recognizes screen changes. When PIR detects a screen change, it will generate a high level to the device to generate an IO alarm. When our device detects the IO signal, it will link with the platform to generate several functions□ Sleep wake-up, attachment upload, email push

Feature

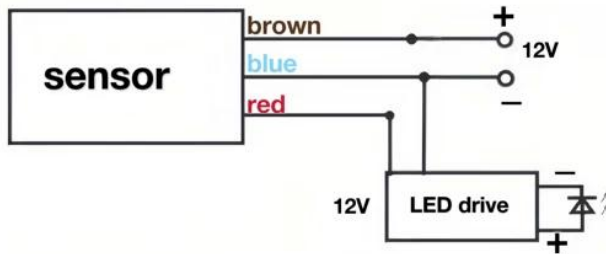
# Features



## PIR Function Flowchart



# Sensor connection display



**Brown:** corresponding to the red 12V

**Blue:** Corresponding to the black ground wire

**Red:** corresponding to the green SENSOR -INX of the device

**PS:** PIR needs external power connection

## PIR setting



**SENS:** Set the sensitivity of PIR, the range is 2M-14M

**TIME:** Set the alarm duration of PIR, the range is 9~15 seconds

**LUX:** Set the working time of PIR, the sun represents the whole day, the moon represents the night