

Richmor Smart Forklift Solution

*Dedicated AI video terminal+VMS

*Face control+Speed control



Hardware introduction - forklift terminal **all-in-one** design

Main Features



FULL
HD
1080p



Face ID



Mobile APP



G-sensor



BSD function



DSM function



Wi-Fi

Hardware introduction---- forklift main accessories optional



Forklift system solution



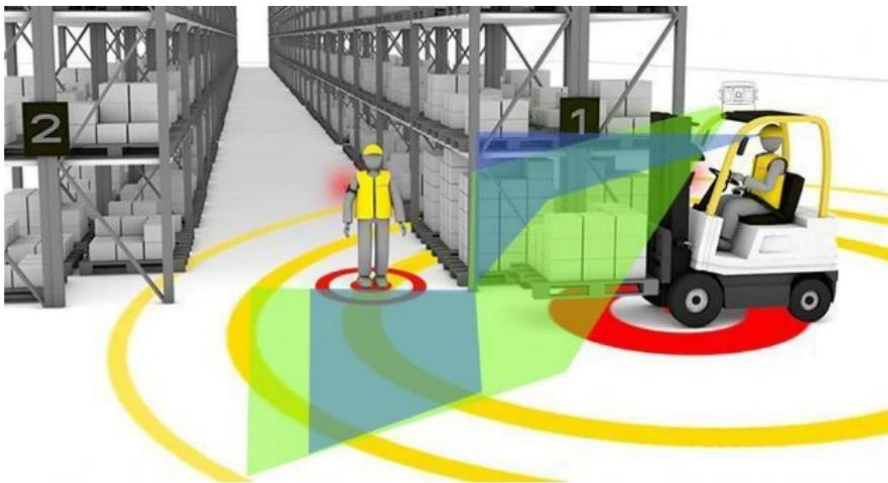
Support DSM(Driver Status Monitoring)

- Behavior Detection: Fatigue/Distracted/Smoking/Calling supported
- Language: English/Russian/Spanish/Portuguese/customized
- Alarm attachments are uploaded to the platform



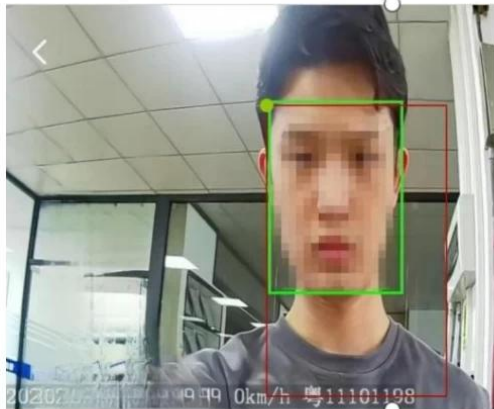
Support BSD(Blind Spot Detection)

- People in blind spot area can be detected
- Give voice alarm to driver and pedestrian
- Detection distance about 10M+
- Alarm attachments are uploaded to the platform



Support face control

- Liveness detection(Prevent illegal drivers from logging in with photos and starting the forklift)
- Max support **500+** face ID can be entered
- Support the platform to issue faces, APP face ID entry
- Unregistered driver can't start the forklift



✓ Live face(Yes)



Photo(No)

Support helmet recognition

- **Scenarios:** The driver is in a normal driving posture but is not wearing a helmet
- **Voice Alarm Content:** Please wear a helmet
- All of **TTS Broadcasts** of forklift terminal: Face import complete



Seat belt sensors



- Real-time monitoring of non-fastening of seat belts and alarm reminders will be carried out.
- Event alarms will be uploaded to the VMS platform for statistical analysis to ensure the safety of forklift operators.

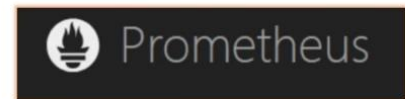
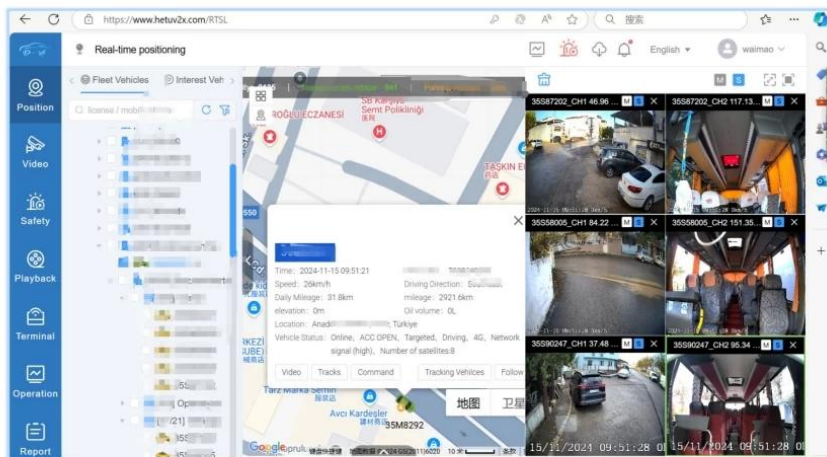
Alarm speed prompter(R-Watch)



- AI alarm prompts to driver such as:DSM BSD
- Averspeed alarm,GPS status, server connection status prompts
- Alarm attachments are uploaded to the platform

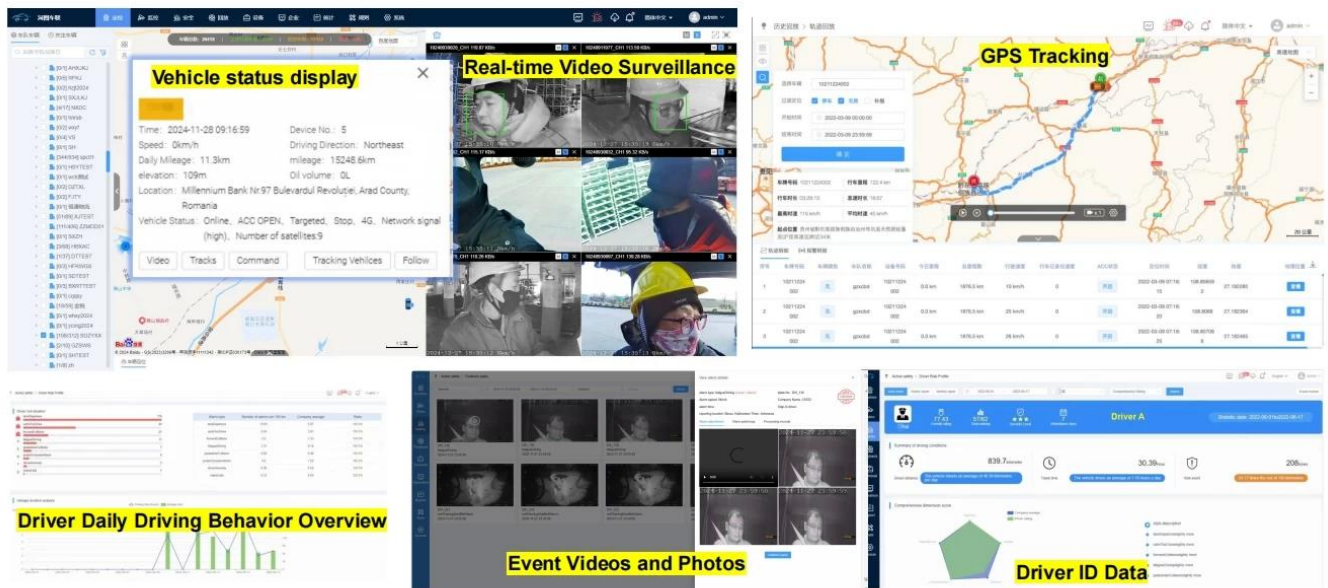
AI Platform

- Devices support **JT808 protocol** and these platforms **CMSV6/Uffizio/Wialon/HETU/ Prometheus.....**
- **No license fee** for Hetu platform
- **Free** server setup and installation platform remotely(**HETU**)
- **API** integration supported



4G AI Platform Function

➤ Real-time video monitoring, GPS tracking, driver behavior monitoring, driver ID data.....



Richmor Forklift Terminal Solution VS Others DVR forklift solution



- Integrated 4G WIFI GPS G-Sensor **DSM BSD** algorithm all in one
- **Mini size** and **easy** installation
- Super nice image quality
- **Nice price** and have competitive in the market
- Industrial design, **unique appearance**
- **Waterproof IP67**



- **Big size** and occupies space,
- The installation is **complex** and requires wiring
- The price is **expensive** and the market is not competitive
- **No waterproof**

Installation Pictures Display



Easy to install

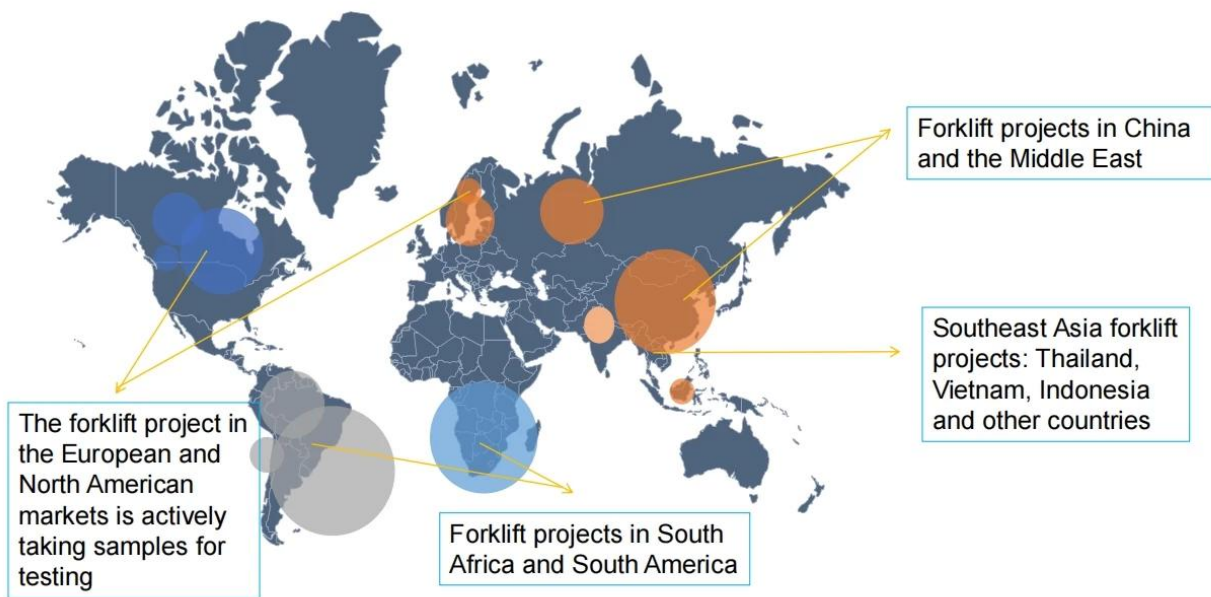
- The bracket can be fixed with 3M glue or hoops
- The mounting bracket supports 355° left and right 90° adjustment, and there are locking screws
- High internal integration and simple wiring

Advantage of Richmor forklift solution

- **Specially designed** for forklifts, the product appearance is unique and has **good market prospects**
- Integrated **4G WIFI GPS G-sensor**
- Integrated **DSM+BSD** algorithm
- **Speed control + face control**
- **Liveness** detection
- **Easy** to install, **save labor cost**
- Full sets **price is competitive**
- Working temperature: **-30° C~75° C**



Richmor Forklift projects come from all over the world



Platform Demo Account

Website: <https://hetuv2x.com/login>

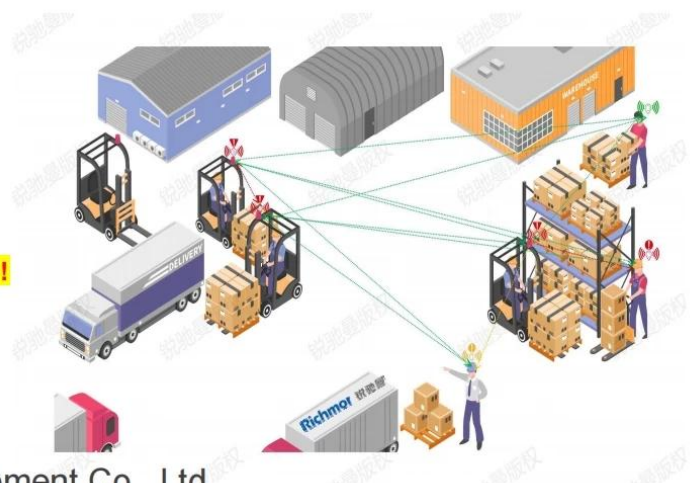
User: test1

Password: Rcm000000

Contact us for more info about our forklift system!!

Thanks you!

Shenzhen Richmor Technology Development Co., Ltd



Device WIFI function : support AP and station mode

- Station mode: can connect your office or factory WiFi
- AP mode: can connect mobile app for real time video, parameters setting, hotspot....

