

## Advanced Features:

1 H.265/H.264 hardware compression, powerful AI processor, with neuronal logic reasoning engine, support for deep learning algorithms.

2 Integrated DMS camera, can expand 1 AI camera input. Support DSM and environmental monitoring.

3 DMS camera driving behavior analysis——It can connect the DMS camera to give alarm warning and upload to the monitoring center for dangerous driving behaviors of drivers, including: fatigue

(closing eyes, yawning), distraction, smoking, talking on the phone, etc

4 Driver face recognition function——Face recognition attendance on the basis of management can also prevent the driver illegal substitution, non-compliance of the driver operation of the problem,

standardize the driver and operation management.

5 Beidou /GPS positioning, support the ministry of JT/T808, JT/T1076, JT/T905, Geely, Su Biao and other platforms

## Products Description

---

## 1CH~5CH Dashcam for Optional

For Multi-channel Dashcam, You Can Choose:

1CH Dashcam (Built-in front camera) + 1CH/2CH/3CH External camera become 2CH / 3CH / 4CH Dashcam;

2CH Dashcam (Built-in front and cabin camera) + 1CH/2CH/3CH External Camera become 3CH / 4CH / 5CH Dashcam.



**1CH Dashcam**  
Built-in Front camera

**2CH Dashcam**  
Built-in Front + Cabin Cameras

**3CH Dashcam**  
Built-in Front + 2\*Cabin Cameras

**4th / 5th cameras optional**



WiFi

APP Control

G-sensor

ADAS Optional

DSM Optional



## Specifications

ABS material, compact size, can be directly attached to the front windshield by 3M glue. The connection is simple and convenient, and the installation can be completed only in 1/20 of the installation time of the traditional terminal.

The machine has a high reliability design, can achieve continuous monitoring in  $-30^{\circ}\text{C}\sim 70^{\circ}$  environment. Industrial grade scheme and system design of the whole machine and reliable electromagnetic compatibility design, to ensure the

stable work of its own and peripheral electronic equipment.

The whole structure has good disassembly and dust proof design, to ensure that TF card, SIM card, antenna and connection port are not damaged.

The host can integrate a variety of video algorithms and the front camera to realize ADAS early warning. Optional driving behavior analysis camera implements driving behavior analysis.

1 channel audio input. Integrated high sensitivity MIC, can record in-car audio, and support voice intercom. Host integrated speaker, audio broadcast and warning.

The host integrates five status indicators to observe the operating status of the device in real time.

External 1 alarm button (SOS).

Support GPS/BD positioning module to achieve speed, position, time and route management.

Supports alarm of module anomaly and antenna anomaly.

Support navigation line departure and area entry and exit alarm, the device can save a maximum of 16 lines and areas.

Integrated 4G full network communication module, can realize remote monitoring and management.

# Richmor





# Internal GPS Dashcam

Flexible angle

Built in GPS  
Antenna

In-cabin  
camera

Road facing  
camera



## 2CH Left-hand Driving

In-cabin  
camera

Road facing  
camera



# External GPS Dashcam

In-cabin  
camera

Road facing  
camera





# 2CH Right-hand Driving

Road facing  
camera

Flexible  
angle



1080P



BD/GPS

G-Sensor



H.265



4G/WIFI



512G



MIC/SPK



# 3CH Left-hand Driving

In-cabin  
camera

Internal  
GPS

Driver  
face  
camera

Road facing  
camera





# 3CH Right-hand Driving

Internal GPS

Driver face  
camera

In-cabin  
camera

Road facing  
camera



## ADAS(Advanced Driving Assistance System)

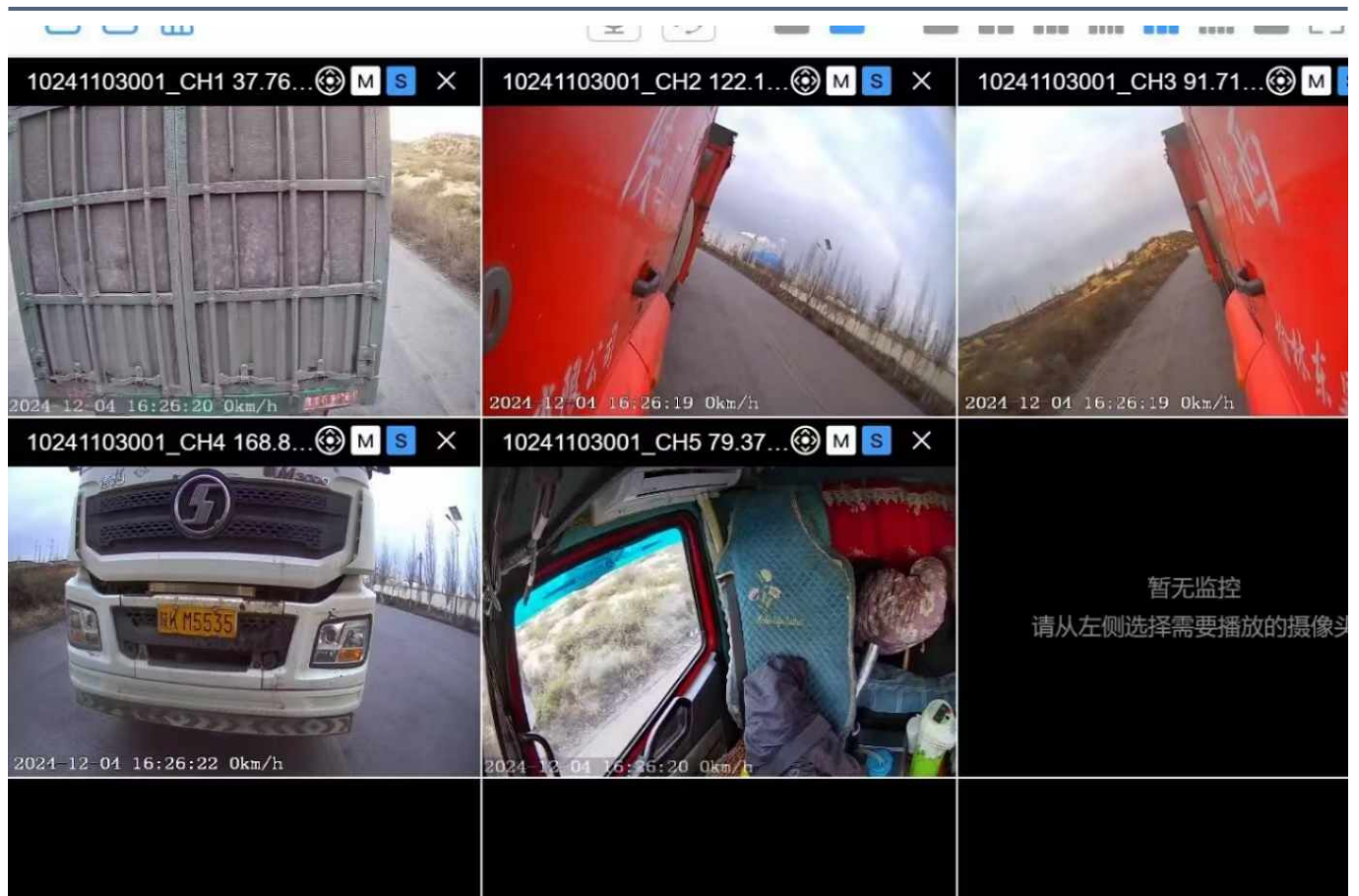
Collision Warning/Passenger Detection/Lane Departure Warning  
Enhance driving safety, Avoid accidents!!



## DSM(Driver Status Monitoring)

Behavior Detection: Fatigue/Disctraction/Smoking/Calling supported

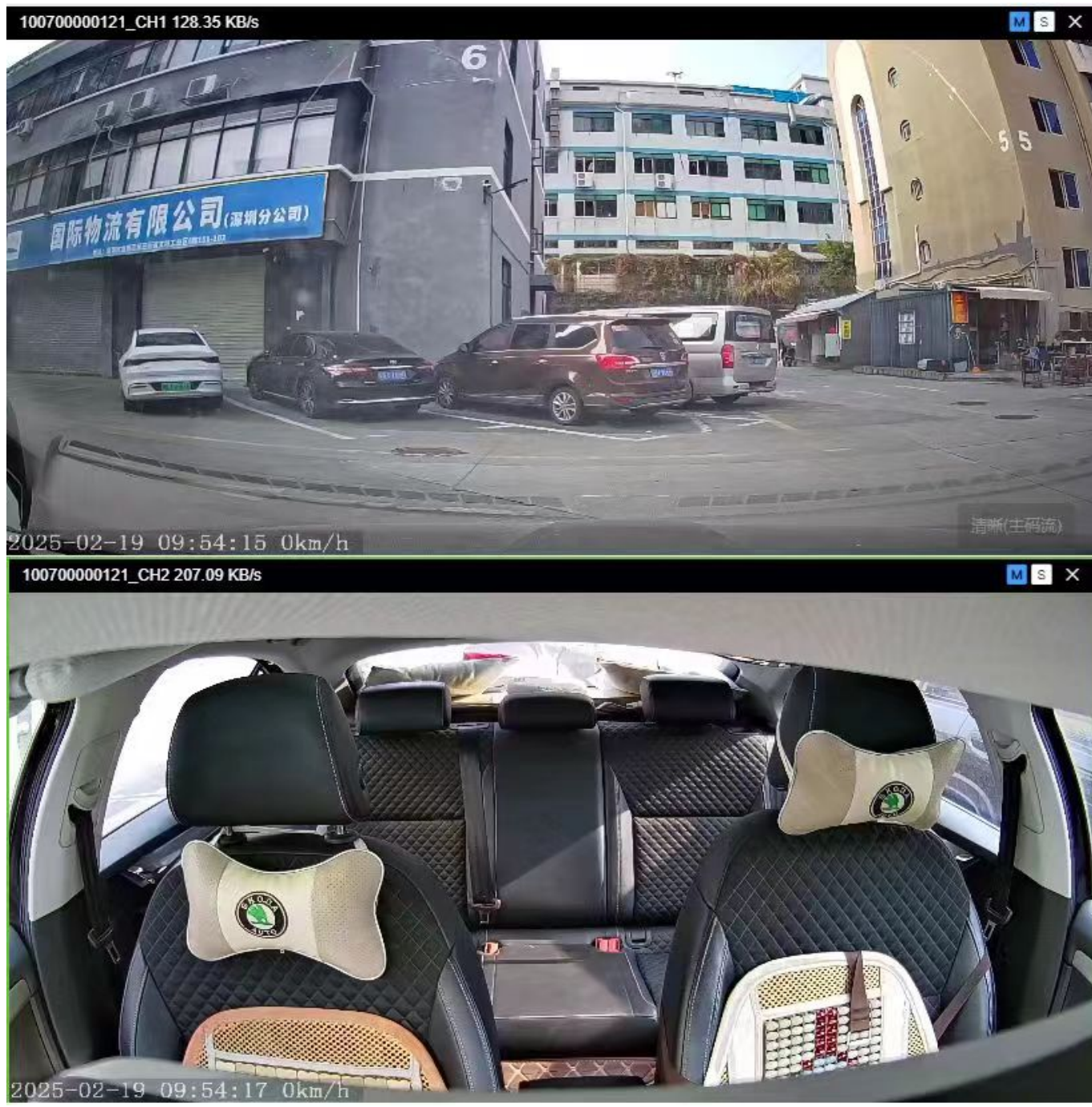
Language: English/Russian/Spanish/Portuguese/customized







13/02/2025 18:48



## Product Parameters

Product name	Dual len 1080P HD dashcam MDVR
Dual Len	Supports, front len 1080P, reverse len 1080P
Angle of len	Ajustable, 180 degree vertical
4G	Yes
Communication	TDD-LTE: B38/B39/B40/B41
Frequency	FDD-LTE: B1/B3/B8 WCDMA: B1
GPS	Yes
WiFi	Yes
Fleet management Platform	Free
Speaker	8Ω, 1W, with audio cavity
Microphone	Single microphone, support echo and noise elimination
G-Sensor	3-axis acceleration sensor



USB	Mini USB*1, support local upgrade or data backup, expandable external digital camera
Panic button	Mini panic button along with
SIM card slot	SIM card slot*1 (MICRO SIM)
TF card slot	TF card slot (For recording video)
Button	1 upgrade button, long press to upgrade
Indicator light	3
Power input	5-30V wide voltage input
Working temperature	-30°C~70°C
Size and weight	length: 115mm; max width: 57.5mm; thickness: 40mm.
Application	Taxi / Car / Online-Hailing / Van, etc.

## Company Profile

---

Shenzhen Richmor Technology Development Co., Ltd. is a high-tech enterprise specializing in the development, production and sales of intelligent commercial vehicle video security solutions and mobile video surveillance products, and has been focusing on the research and development and production of Internet of Vehicles products for many years.

The company's products mainly include Beidou standard high-definition tachograph, AI active safety assistance driving all-in-one machine, 4G/3G million high-definition AHD mobile video recorder, integrated taxi/online car-hailing special vehicle intelligent video terminal, 4G/3G million high-definition network mobile video recorder, four/eight-way vehicle hard disk/SD card video recorder, 4G/3G individual soldier system, high-definition vehicle camera, high-definition vehicle, etc. As a professional manufacturer, we are committed to providing customers with first-class technology, high-quality products and professional services.

### Our Advantages:

1. Have our factory, the product prices are competitive.
2. Have our own R&D team to support OEM&ODM.
3. Samples can be shipped within a week.
4. IAF16949 certificated Manufacturer, CE, ROHS, E-MARK, FCC qualified Products.
5. With 17 years of experience, we can provide customers with good solutions and recommend suitable products.



**Attention:** About this dashcam, you are required to install an app with Android phone to do configuration or settings, if you only have iPhone, you need to use a computer to install a android simulator, or we can help you to do this before delivery, feel sorry for the inconvenience caused to you.

Contact



Sales person: Kaylee Qing  
 Email: [overseasales-2@rcmcctv.com](mailto:overseasales-2@rcmcctv.com)  
 Whatsapp/skype: +86 18145803250