

4ch mobile dvr network mdvr support connect with ip camera 1080p with hdd slot 2TB--RCM-9204Series

Product Description

MAIN FEATURES

H.264 Compression, 8CH Real-time 720P/4ch 1080P High definition camera input.

2CH video output (1CH CVBS video, 1CH VGA output for optional.)

Exclusive pre-allocate File System protect data completeness, prevent SD Card fragment, ensure data stable and complete.

8-36V wide voltage with low power consumption.

Unique UPS Technology ensures the integrality of record when power failure occurs, even can for 8-10s.

HDD+SD Card Storage (Support 2.5" HDD, max 128G SD Card) protect from Shock & Dust damage; support USB port data backup and device update;

Support 2 USB interfaces, data backup and device upgrade.

Support 8CH alarm input (1CH Analog + 7CH IO Alarm input), 2CH independent alarm output.

Support 1 CH CAN port.

Support HDD heating functions, can work in harsh environment.

Support GPS/BD/G-Sensor Extension modules;

Realize real time monitor through 3G/4G;

Support WIFI module, can download data automatically.

Support Broadcast/Intercom/Text sent etc; can add oil sensor/temperature sensor/POS/LED Advertisement Panel;

Supporting the ministry of communications agreement. Support SMS remote configure/ control device;

OTA(On-The-Air) Device automatically upgrade function, can upgrade to updated version, maintenance is more convenient.

Support voice call function.

Support IOS/Android Phone Remote monitor

High level aviation interface, easily installation and better shockproof, more stable;

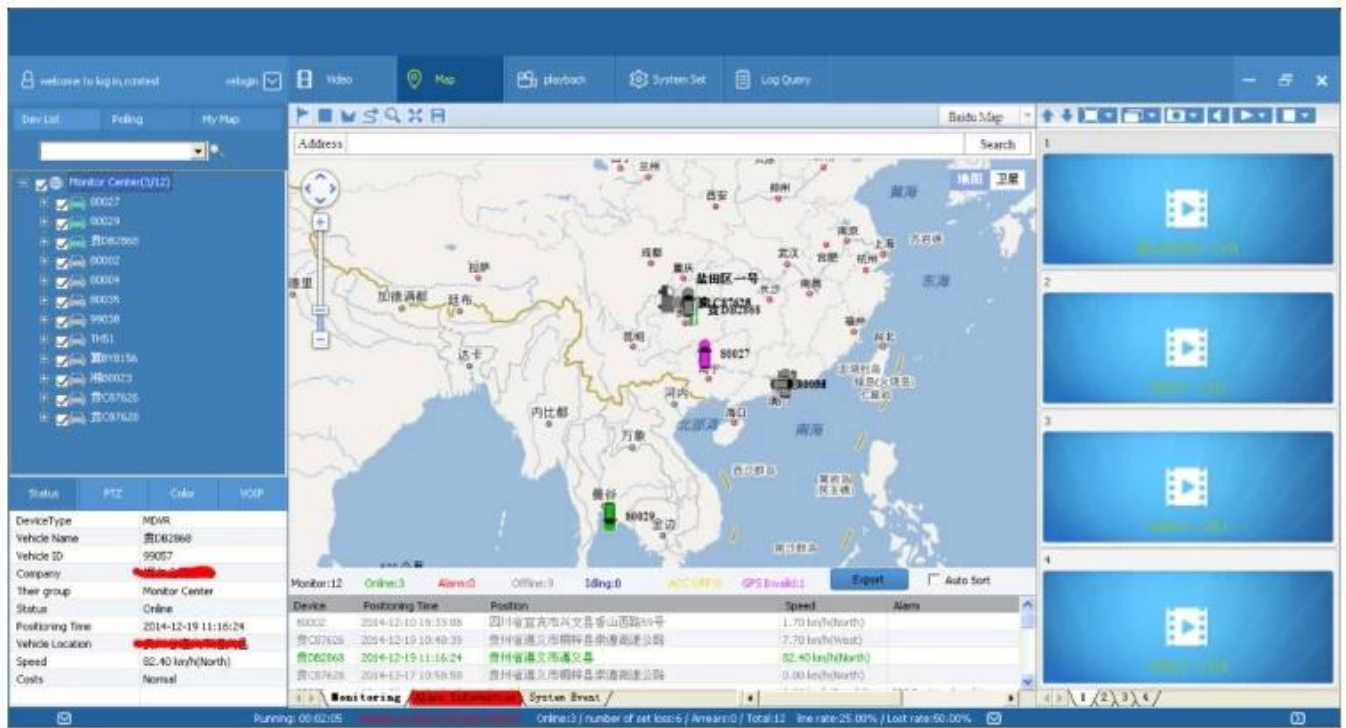
Item		Parameter
OS		Linux
Language		Chinese/English/Others (can be customized)
Video Compression		H.264 Compression Mode
OSD		Overlays information such as date time and vehicle ID
GUI	Graphical User Interface	Can connect to external LED screen. Setup system parameters with the remote control.
Video Record System	Video Input	4CH 1080p or 8ch 720p input ,aviation connector.
	Video Output	1CH CVBS+ VGA output for optional, 1.0Vp-p, 75 Ω
	Preview	Support 1 channel, 4 channels,9channels preview.,Support Manual/Alarm Trigger full screen preview
	Resolution	1080p/720p/D1/HD1/CIF, MAX:4 channels 1080p or 8 channels 720p
	Video Quality	0-7 levels, 0 is the highest level, 7 is the lowest level.
	Video Standard	CIF: 256Kbps ~ 1.5Mbps, <u>multi levels video quality optional</u> HD1: 600Kbps ~ 2.5Mbps, <u>multi levels video quality optional</u> D1: 800Kbps ~ 3Mbps, <u>multi levels video quality optional</u> 720P:4Mbps-6Mbps, <u>multi levels video quality optional</u> 1080P:4Mbps-8Mbps, <u>multi levels video quality optional</u>
	Record Mode	The default setting is auto recording after power on. Timed recording, alarm trigger recording and manual recording are supported.
Audio	Audio Input	4CH
	Audio Output	1CH
	Compression	G.711 compression, 8KB/s speed
Alarm Input		7CH IO Alarm Input+1ch AD input; Support alarm linkage function

Voltage & Power Consumption	Power Management	Adaptive wide power input, support Wide Voltage, Over-load、Over-voltage、 Short Circuit、Reverse Protection..Support Time Setting/Delay power off
	Voltage Input	DC:+8V ~ +36V
	Voltage Output	+12V@2.5A, +5V@2.5A
	Power-off Protection	UPS Technology,All video information can be saved automatically when the power is cut off, and make sure that all the files can not be damaged.
	Power Consumption	Normal Working <5W
Working Environment	Temperature	-20℃ to +70℃
	Humidity	20% to 80%
others	Size	187 (D) * 188 (W) * 67 (H) mm
	Net Weight	1.8kg

RMSV6 INTERFACE

Easily Smart GUI Interface, saving time in device setting.





Customer Feedback



David from USA.

This supplier has good softwares ability and can meet my needs. The sample works very good. I am hoping to order more.

Tony from Russia.

The cooperation is satisfied. The products are good. Very strong housing case. My clients like a lot.



Jose from Columbia.

We made correct decision in choosing this supplier. We are now having much better management and control on our vehicles. The ticket cash are more each day.



Detailed Images



[illegible]

<div style="text-align: center;">  Verification of Conformity Reference No. 1131304030719 </div>	
Responsible Party	Shenzhen Nuclear Technology Development Co., Ltd.
Address	2F No. 10 West Longgang Road, Longgang New District, Shenzhen
Product	Model 2048
Model No.	NCM-40071000, NCM-40071001, NCM-40071002, NCM-40071003, NCM-40071004, NCM-40071005, NCM-40071006, NCM-40071007, NCM-40071008, NCM-40071009, NCM-40071010, NCM-40071011, NCM-40071012, NCM-40071013, NCM-40071014, NCM-40071015, NCM-40071016, NCM-40071017, NCM-40071018, NCM-40071019, NCM-40071020, NCM-40071021, NCM-40071022, NCM-40071023, NCM-40071024, NCM-40071025, NCM-40071026, NCM-40071027, NCM-40071028, NCM-40071029, NCM-40071030, NCM-40071031, NCM-40071032, NCM-40071033, NCM-40071034, NCM-40071035, NCM-40071036, NCM-40071037, NCM-40071038, NCM-40071039, NCM-40071040, NCM-40071041, NCM-40071042, NCM-40071043, NCM-40071044, NCM-40071045, NCM-40071046, NCM-40071047, NCM-40071048, NCM-40071049, NCM-40071050, NCM-40071051, NCM-40071052, NCM-40071053, NCM-40071054, NCM-40071055, NCM-40071056, NCM-40071057, NCM-40071058, NCM-40071059, NCM-40071060, NCM-40071061, NCM-40071062, NCM-40071063, NCM-40071064, NCM-40071065, NCM-40071066, NCM-40071067, NCM-40071068, NCM-40071069, NCM-40071070, NCM-40071071, NCM-40071072, NCM-40071073, NCM-40071074, NCM-40071075, NCM-40071076, NCM-40071077, NCM-40071078, NCM-40071079, NCM-40071080, NCM-40071081, NCM-40071082, NCM-40071083, NCM-40071084, NCM-40071085, NCM-40071086, NCM-40071087, NCM-40071088, NCM-40071089, NCM-40071090, NCM-40071091, NCM-40071092, NCM-40071093, NCM-40071094, NCM-40071095, NCM-40071096, NCM-40071097, NCM-40071098, NCM-40071099, NCM-40071100, NCM-40071101, NCM-40071102, NCM-40071103, NCM-40071104, NCM-40071105, NCM-40071106, NCM-40071107, NCM-40071108, NCM-40071109, NCM-40071110, NCM-40071111, NCM-40071112, NCM-40071113, NCM-40071114, NCM-40071115, NCM-40071116, NCM-40071117, NCM-40071118, NCM-40071119, NCM-40071120, NCM-40071121, NCM-40071122, NCM-40071123, NCM-40071124, NCM-40071125, NCM-40071126, NCM-40071127, NCM-40071128, NCM-40071129, NCM-40071130, NCM-40071131, NCM-40071132, NCM-40071133, NCM-40071134, NCM-40071135, NCM-40071136, NCM-40071137, NCM-40071138, NCM-40071139, NCM-40071140, NCM-40071141, NCM-40071142, NCM-40071143, NCM-40071144, NCM-40071145, NCM-40071146, NCM-40071147, NCM-40071148, NCM-40071149, NCM-40071150, NCM-40071151, NCM-40071152, NCM-40071153, NCM-40071154, NCM-40071155, NCM-40071156, NCM-40071157, NCM-40071158, NCM-40071159, NCM-40071160, NCM-40071161, NCM-40071162, NCM-40071163, NCM-40071164, NCM-40071165, NCM-40071166, NCM-40071167, NCM-40071168, NCM-40071169, NCM-40071170, NCM-40071171, NCM-40071172, NCM-40071173, NCM-40071174, NCM-40071175, NCM-40071176, NCM-40071177, NCM-40071178, NCM-40071179, NCM-40071180, NCM-40071181, NCM-40071182, NCM-40071183, NCM-40071184, NCM-40071185, NCM-40071186, NCM-40071187, NCM-40071188, NCM-40071189, NCM-40071190, NCM-40071191, NCM-40071192, NCM-40071193, NCM-40071194, NCM-40071195, NCM-40071196, NCM-40071197, NCM-40071198, NCM-40071199, NCM-40071200, NCM-40071201, NCM-40071202, NCM-40071203, NCM-40071204, NCM-40071205, NCM-40071206, NCM-40071207, NCM-40071208, NCM-40071209, NCM-40071210, NCM-40071211, NCM-40071212, NCM-40071213, NCM-40071214, NCM-40071215, NCM-40071216, NCM-40071217, NCM-40071218, NCM-40071219, NCM-40071220, NCM-40071221, NCM-40071222, NCM-40071223, NCM-40071224, NCM-40071225, NCM-40071226, NCM-40071227, NCM-40071228, NCM-40071229, NCM-40071230, NCM-40071231, NCM-40071232, NCM-40071233, NCM-40071234, NCM-40071235, NCM-40071236, NCM-40071237, NCM-40071238, NCM-40071239, NCM-40071240, NCM-40071241, NCM-40071242, NCM-40071243, NCM-40071244, NCM-40071245, NCM-40071246, NCM-40071247, NCM-40071248, NCM-40071249, NCM-40071250, NCM-40071251, NCM-40071252, NCM-40071253, NCM-40071254, NCM-40071255, NCM-40071256, NCM-40071257, NCM-40071258, NCM-40071259, NCM-40071260, NCM-40071261, NCM-40071262, NCM-40071263, NCM-40071264, NCM-40071265, NCM-40071266, NCM-40071267, NCM-40071268, NCM-40071269, NCM-40071270, NCM-40071271, NCM-40071272, NCM-40071273, NCM-40071274, NCM-40071275, NCM-40071276, NCM-40071277, NCM-40071278, NCM-40071279, NCM-40071280, NCM-40071281, NCM-40071282, NCM-40071283, NCM-40071284, NCM-40071285, NCM-40071286, NCM-40071287, NCM-40071288, NCM-40071289, NCM-40071290, NCM-40071291, NCM-40071292, NCM-40071293, NCM-40071294, NCM-40071295, NCM-40071296, NCM-40071297, NCM-40071298, NCM-40071299, NCM-40071300, NCM-40071301, NCM-40071302, NCM-40071303, NCM-40071304, NCM-40071305, NCM-40071306, NCM-40071307, NCM-40071308, NCM-40071309, NCM-40071310, NCM-40071311, NCM-40071312, NCM-40071313, NCM-40071314, NCM-40071315, NCM-40071316, NCM-40071317, NCM-40071318, NCM-40071319, NCM-4007

 CERTIFICATE of Conformity Reference No.: CCB-07/2012-0475	
Applicant:	Sinochem Shennong Technology Development Co., LTD.
Address:	3F No.6 West Longgang Road, Longgang New District, Shenzhen, China
Product:	Shenke 300S
Model(s):	HCN-00000A, HCN-00000B, HCN-00000C, HCN-00000D, HCN-00000E, HCN-00000F, HCN-00000G, HCN-00000H
Trade Mark:	Rohinson

The applicant products have been tested as well as the listed standards and found to conform with the following European Directives:

The EMC Directive (2004/108/EC)

To EN55022, EN55024, EN55025, EN55026

The tests were performed in normal operation mode. The test results apply only to the particular version tested and to the specific model tested and do not constitute approval specifically to the sample investigated or to the listed certificate number only.

The CE markings on other parts can be affixed on the product after presentation of necessary technical documentation.

Other related Directives have to be checked.



Date: April 18, 2012

 CERTIFICATE of Conformity Reference No.: JCR-018-000016	
Applicant:	Mitsubishi Motor Technology Development Co., Ltd.
Address:	5F, No. 30 Wasei Longgang Road, Longgang New District, Shanghai City
Product:	Camera
Model(s):	NCM-P1C12V, NCM-LP1C12V, NCM-LP1C12V, NCM-IP1C12V, NCM-IMP1C, NCM-IMP1A, NCM-24G, NCM-24G, NCM-24G, NCM-24G, NCM-24G, NCM-24G, NCM-24G, NCM-24G, NCM-IP1C24V, NCM-IMP1C, NCM-IMP1A, NCM-24G24V
Trade Mark:	Mitsubishi

The submitted products have been tested by us with the listed standards and found to conform with the following European Directives:

(EMC Directive 2004/108/EC)

(EN 60950, EN 60950, EN 60950, EN 60950)

This test was performed in normal operation mode. The test results apply only to the particular sample tested and do not explicitly cover all variants. This certificate applies specifically to the sample investigated in our laboratory number 010.

The CE marking as shown below can be affixed to the product after inspection if necessary technical documentation.

(Other relevant Directives may be applicable)




April 10, 2015

Shanghai CCF Compliance Testing Laboratory Ltd.
 3F, Jingang Innovation Park, Tonggao Road, Baoshan District, Shanghai City
 Shanghai, China
info@ccf-test.com
<http://www.ccf-test.com>
 Email: admin@ccf-test.com

[illegible]

	
<h1 style="text-align: center;">CERTIFICATE</h1> <h2 style="text-align: center;">of Conformity</h2> <h3 style="text-align: center;">20100001-Registration of Hazardous Substances</h3>	
<p style="text-align: center;">Reference No.: UL-01-0001-0000-14</p>	
<p>When tested as specified, the submitted sample complies with the requirements of Commission Decision of 21 July 2002 amending Directive 2002/95/EC (RoHS).</p>	
Applicant:	Shenzhen National Technology Development Co., Ltd.
Address:	2F, No. 64 West Longgang Road, Longgang New District, Shenzhen, China
Trade Mark:	Redragon
Product:	Mouse (USB)
Version:	PC/M-MOUSE, PC/M-MOUSE, PC/M-MOUSE, PC/M-MOUSE, PC/M-MOUSE, PC/M-MOUSE, PC/M-MOUSE, PC/M-MOUSE
<p>This test report is issued by the Company subject to its Standard Conditions of Service printed separately. Attention is drawn to the limitations of liability, interpretation and confidentiality issues outlined therein. This results sheet is this test report only and is not intended to replace other documents issued. This Test Report should be reproduced, except in full, without prior written permission of the Company.</p>	
<p>Other relevant documents have to be supplied.</p>	
<div style="display: flex; justify-content: space-between; align-items: center;"> <div> <h1 style="margin: 0;">RoHS</h1> <p style="margin: 0;">Shenzhen UL2 Compliance Testing Laboratory Ltd. 1/F, Wingkee Industrial Park, Tongle Road, Shen-Mei, Shenzhen, Guangdong, China Tel: 0086-755-83201100 Email: ul@ulap.com.cn http://www.ulap.com.cn</p> </div> <div style="text-align: center;">  <p style="margin: 0;"><i>[Signature]</i> Manager April 18, 2012</p> </div> </div>	

FAQ

Q:Are you factory manufacturer or trade company?

We are factory manufacturer,we have our own factory and technology/skill support,we have engineers to support/take charge of R&D ,resolve problems product.

Q: Does the MDVR support Hard drive and SD card?

Yes, HDD version MDVR supports SSD, HDD, and SD card. SD card version MDVR supports max 2 SD card.The storage capacity can be from 32GB to 2TB.

Q: Is it difficult to install MDVR into the vehicle?

Actually it is easy to install it into vehicle. Most driver can figure out how to connect the power cables.And the camera installation is more easy. Just screw, connect and mount on the target place inside the vehicle.

Q: If I need door open and close alarm, overspeed alarm, reverse video, brake video, left-turn video, right-turn video, etc,is it available?

Definitely yes!The I/O RS232 and 485 extension port is for all expanded purposes, including the functions above.In fact, there are more customized functions which can be connect through this port, such as Fuel sensor, Counter system,PTZ camera, and so on.

Q: We have our own platform and server, can we use your MDVR? Do you have SDK or can you do customized platform for us?

Yes, we have SDK ready and welcome your OEM customized order!

Q: We have our own platform and server, can we use your MDVR? Do you have SDK or can you do customized platform for us?

Yes, we have SDK ready and welcome your OEM customized order!

Q: Does the MDVR come with accessory, such as HDD, SD card, Microphone, Camera, Extension cable etc?

We have all accessories ready. You can ask us to make the complete quote for one whole set. Normally the MDVR doesn't include any accessory. Therefore it is advisable to inform us about your target accessory. All are can done right here. One-stop-serve purchasing.

Q: Can I get a sample to test before formal order?

Yes, you can. We can provide sample with 1 month test period. It will demand some deposit and the delivery (both send and resend) cost is supposed to be on your own side. If the delivery cost is not so high, we recommend this way. If not, then we do not recommend you do this. Do not forget the import tax as well.

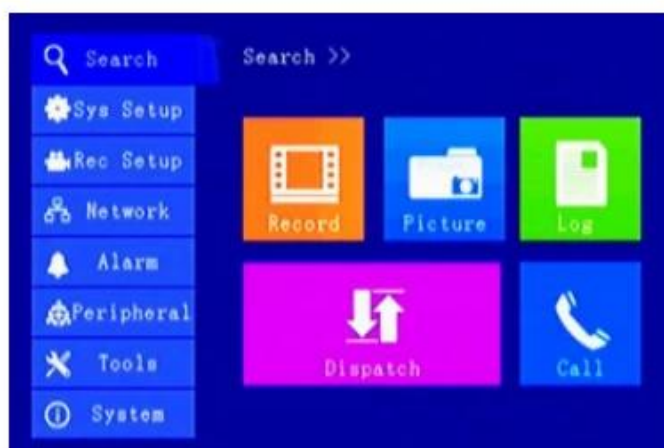
Q: How many camera in one set? Can I use my own accessory?

A: The accessory depends on you. The normal quotation is based on MDVR only. The accessory would not be quoted until you ask for them. And it is OK to use your own accessory. It is compatible.

Q: What can I do if the MDVR fails to work?

A: You can send it back to us. Remember that we provide 12 months quality warranty under normal use. If you send it back, we will inspect the MDVR in details and repair it for you. However we seldom have returned defective MDVR. The quality is rather good!

Easily Smart WIN8 Interface, saving time in device setting.



Pls feel free to contact **Amily** directly for your vehicle projects~~

MB/Whatsapp: +86 18929314790