

**RMVS software supported 4ch hdd 720P mobile dvr with gps  
4g LTE wifi with automatically download,**

**The outstanding features of this dvr :  
Economic version with full function, strong features and high  
quality!**





Item		Parameter
OS		Linux
Language		English/Chinese/Customized
Video Compression		H.264 Compression
OSD		Overlays information such as date time and vehicle ID
GUI	Graphical User Interface	Setup system parameters with the remote control.

Video Record System	Video Input	4CH 720P AHD input/SD input/ mixed input,aviation connector, 1.0Vp-p, 75Ω
	Video Output	2CH CVBS+ VGA output for optional, 1.0Vp-p, 75Ω,Aviation,Support 1CH Full Screen, 4CH Screen view
	Preview	Support 1 channel and 4 channels preview., Support Manual/Alarm Trigger full screen preview
	Resolution	720P/D1/HD1/CIF, MAX:4 channels 720P and 4 channels D1
	Image Quality	0-7 levels, 0 is the highest level.
	Video Standard	PAL: 100f/s , CCIR625 line,50field; NTSC: 120f/s, CCIR525 line,60field; CIF: 256Kbps ~ 1.5Mbps, 8 level video quality optional; HD1: 600Kbps ~ 2.5Mbps, 8 level video quality optional; D1: 800Kbps ~ 3Mbps, 8 level video quality optional; 720P: 4Mbps-6Mbps, multi level video quality optional
	Record Mode	The default setting is auto recording after power on. Timed recording, alarm trigger recording and manual recording are supported.
Audio	Audio Input	4CH Aviation Plug Input
	Audio Output	2CH,headphone connect at front panel, BNC Connect on Back panel
	Compression	G.726 compression, 8KB/s speed
Alarm Input		7CH Alarm Input,1CH AD Input, impulse speed input,Alarm Linkage
Alarm Output		2CH Alarm Output,Support Light/ Sound alarm sensor,Oil/Power cut off
Interface		3CH RS232, POS/Fuel Sensor/ LED Advertisement Connection
		2CH 485 Interface,Connect PTZ Camera
		2CH CAN interface
Wireless Transmission		Support Built in 3G transmission, WCDMA, CDMA2000,GPRS, EDGE□ Built in 4G module optional, TDD-LTE, FDD-LTE
GPS Position		Support Built GPS/BD Module
Storage	HDD	Max 2.5" 2TB HDD
	SD Card	Max 128GB SD Card Mirror Recording Keep Data Safety
	Update	Support USB Updating, SD Card Updatin, OTA Remote Updating
	File Format	H.264
	File System	Special FAT32 File System
	USB	USB Interface on Front Panel for data back up by U Disk,Hard Disk

Record Replay	Video Search	Search By Record Time/Record Type etc
	Playback	Max support 4CH Replay /Stop/Fast/Slow at same time
		Support forward and backward play at the speed of: x 2,x4,x8,x16.
Security		User/Admin 2 Level Different Password
Optional Functions	Voice Call	Support voice call each other
	Serial Expand	Support LED Advertisement Panel□Oil Sensor□POS□Bus Station Broadcaster□ Car OBD,ect.external device
Voltage & Power	Power Management	Wide Voltage.Support Timed/Delay off
	Input Voltage	DC:+6V - +36V
	Power	Working □5W
	Temperature	-20°C - +70°C
Working Environment	Humidity	20% - 80%
	Size	200 □D□* 187□W□* 62□H□ mm
Others	Weight	1.90 Kg

## Main Features

1. HIS Solution,H.264 Compression,support 4CH 720P AHD input/ 4CH analog standard definition Camera input/2CH HD + 2CH SD mixed input;
2. 3CH video output (2CH CVBS video, support front&rear panel output; VGA output for optional.)
3. Exclusive pre-allocate File System protect data completeness, prevent SD Card fragment,ensure data stably and completely.
4. 8-36V wide voltage with low power consumption.
5. Unique UPS Technology ensures the integrality of record when power failure occurs,even can for 8-10s.
6. HDD+SD Card Storage ( Support 2.5" HDD, max 128G SD Card) protect from Shock & Dust damage ;support USB port data backup and device update;
7. Support 2 USB interfaces, data backup and device upgrade.
8. Support 9CH alarm input (1CH analog input + 8CH IO alarm input ), 2CH independent alarm output.
9. Support 2 CAN interfaces.
10. Support HDD heating functions,can work in harsh environment.
11. Support GPS/BD/G-Sensor Extension modul;
12. Realize real-time monitor through 3G/4G;

13. Support WIFI module, can download data automatically.

14 Support Broadcast/Intercom/Text sent etc;can add oil sensor/temperature sensor/POS/LED Advertisement Panel;

15. Support SMS remote configure/ control device;

16. OTA(On-The-

Air) Device automatically upgrade function, can upgrade to updated version , maintenance is more convenient.

17. Support voice call function.

18. Support IOS/Android Phone Remote monitor

## PC Software interface for gps tracking

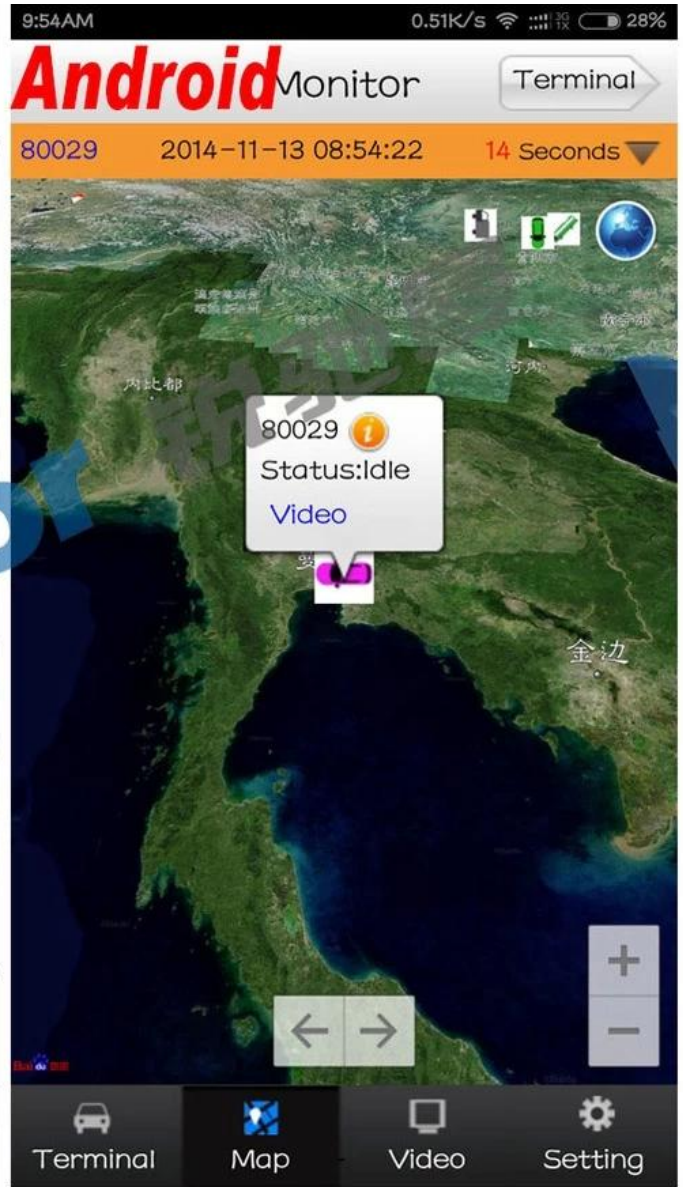
The screenshot displays the 'Mobile monitoring and management platform' software interface. The top navigation bar includes options like 'Welcome to log in,RCMTEST', 'System', 'Video', 'Map', 'Playback', 'System Set', 'Log Query', and 'Extend App'. The left sidebar shows a 'Dev List' and 'My Map' section with a tree view of monitored devices. The main area features four video feeds labeled '贵C 26562 - CH1 - 4 KB/5', '贵C 26562 - CH2 - 36 KB/5', '贵C 26562 - CH3 - 0 KB/5', and '贵C 26562 - CH4 - 2 KB/5', showing interior views of a vehicle. Below the videos is a table with columns for 'Status', 'PTZ', 'Color', and 'VOIP'. A detailed information panel for device '贵C87762' is visible, including its time, speed, company, position, status, and network signal. A map on the right shows the vehicle's location on a road network. The bottom status bar indicates 'Running: 00:02:02' and provides summary statistics like 'Online:5 / Number of set loss:5 / Arrears:0 / Total:12'.

Status	PTZ	Color	VOIP
Device type	MDVR		
Vehicle Name	贵C 26562		
Vehicle ID	80088		
Company	遵义县万发出租运输有限公司		
Their Group	Monitor Center		
Status	Online		
Positioning Time	2015-08-11 10:10:22		
Location	贵州省遵义市红花岗区春天		
Speed	13.70 km/h(South)		
Costs	Normal		

贵C87762  
Time:2015-08-11 10:10:19  
Speed:0.00 km/h(Northwest)  
Company:遵义集团(省际)  
Position:福建省漳州市龙文区  
Status:(Online)ACC ON,SI  
Network signal Normal  
Network:3G

Running: 00:02:02    Online:5 / Number of set loss:5 / Arrears:0 / Total:12    Line Rate:41.67% / Lost Rate:41.67%

## Android/IOS APP Monitor



## Server software interface

Vehicle Management System Welcome! 销售客户 | Manager | Exit

Report	Device	User
Report		
Quick Report		
Mileage Summary		
Mileage Daily		
Track Detail		
Speed Report		
Online Summary		
IO Alarm Report		
Alarm Report		
Storage Report		
Upgrade Report		
Fuel Report		
Park Report		
Geo Fencing Report		
3G Flow Report		
Extend Report		
Dispatch Report		

**Mileage Summary**

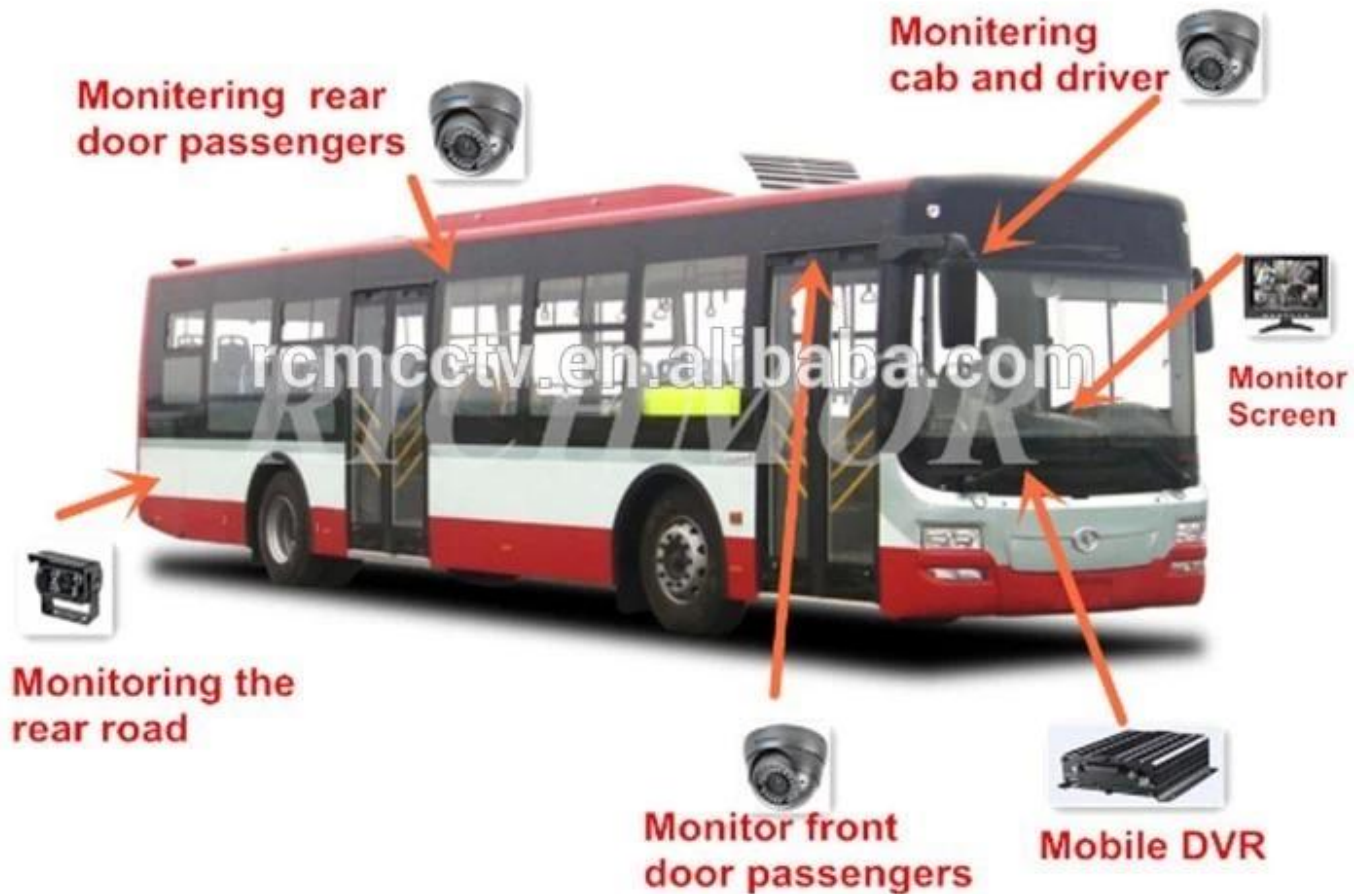
Begin Time: 2016-01-08 00:00:00 To: 2016-01-08 16:27:09

Device: All Devices Select Device Query Export To Excel Export To Csv Export To Pdf

Index	Vehicle	Total Mileage (KM)	Begin Time	Start Mileage (KM)	Start Position	End Time	End Mileage (KM)
1	粤EX3114	174.88	2016-01-08 09:03:32	22.95	22.534264, 114.006444	2016-01-08 16:25:41	157.83
2	粤EX3130	202.07	2016-01-08 07:33:17	18.1	22.884299, 112.692602	2016-01-08 16:25:28	171.57
3	24012	277.42	2016-01-08 07:09:55	23.41	23.369562, 116.675227	2016-01-08 14:57:24	300.83
4	冀A76248	97.4	2016-01-08 00:00:25	299.97	41.572469, 118.786245	2016-01-08 09:42:39	41.09
5	24023	0	2016-01-08 00:00:07	16.26	37.758759, 120.731127	2016-01-08 16:19:07	16.26
6	晋QW5387	416.36	2016-01-08 06:09:54	96.66	35.461432, 117.643793	2016-01-08 16:20:11	92.83
7	鲁J81712	120.98	2016-01-08 04:48:40	26.51	35.876478, 117.681941	2016-01-08 14:25:07	144.92
8	粤H65250	45.81	2016-01-08 00:00:03	139.13	22.654394, 112.498593	2016-01-08 16:15:15	115.82
9	粤H65153	40.61	2016-01-08 00:00:27	92	22.654197, 112.497665	2016-01-08 16:11:28	73.72
10	粤H65368	111.72	2016-01-08 00:00:15	145.61	22.654321, 112.498645	2016-01-08 16:24:48	93.9
11	粤H65010	52.02	2016-01-08 00:00:10	93.24	22.654234, 112.497795	2016-01-08 16:15:55	57.92
12	晋AA3683	655.08	2016-01-08 00:00:29	354.36	35.950643, 117.659700	2016-01-08 16:24:44	1009.74
13	24058	224.42	2016-01-08 07:00:58	44.57	37.949788, 118.844070	2016-01-08 16:17:34	60.4
14	28999	2.36	2016-01-08 13:13:09	17.6	28.734420, 121.235847	2016-01-08 13:57:27	19.81
15	01568	369.29	2016-01-08 00:00:54	51.04	33.733305, 115.866921	2016-01-08 16:03:58	420.33

## Application

# Professional Mobile DVR Solution for Bus



Good Relationship with our Customers



**For more information pls feel free to contact Amily:**

**Email: overseasales-2@rcmcctv.com**

**Skype: rcmcctvsales2**

**QQ: 2355778097**

**MB/whatsapp: +86 18929314790**