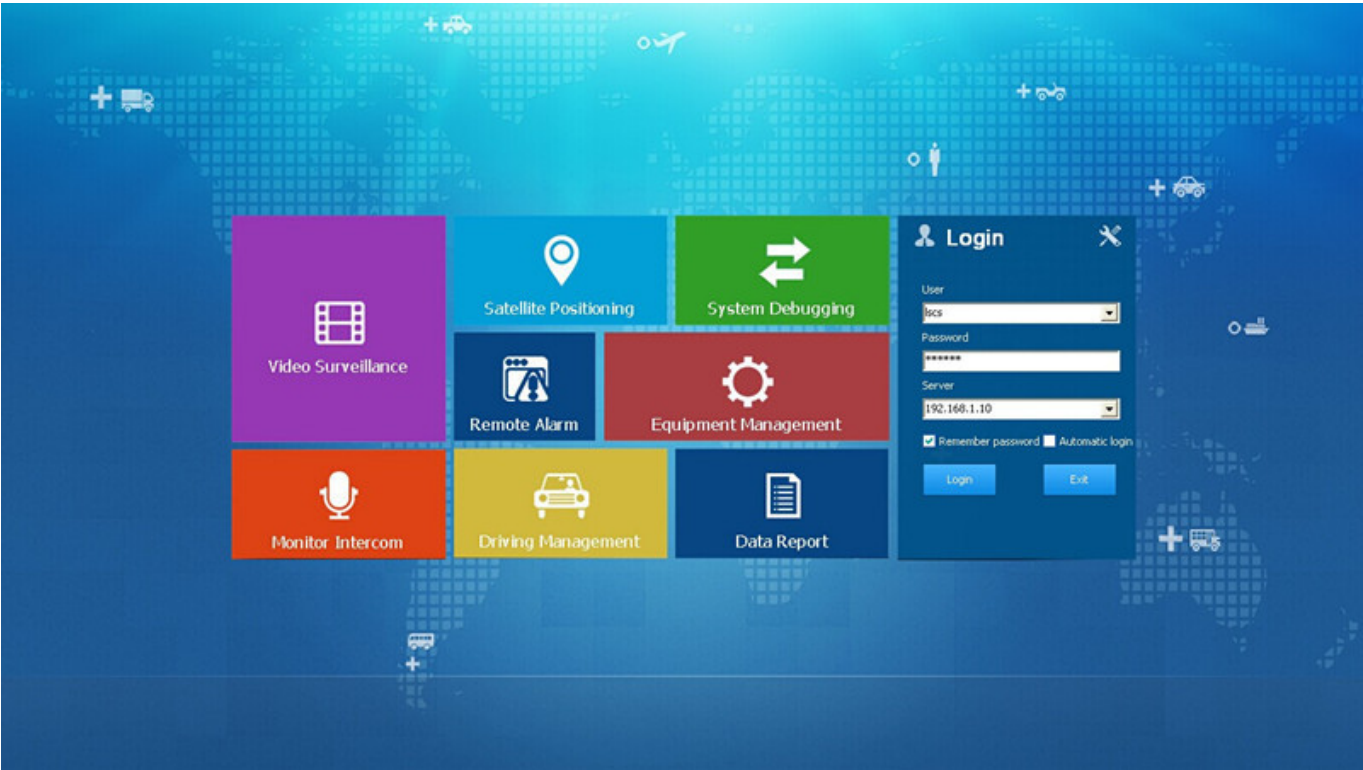


Product Description



welcome to log in, rntest relogin Video Map playback System Set Log Query

Dev List Polling My Map

Monitor Center(3/12)

- 80027
- 80029
- 贵D62868
- 80002
- 80004
- 80035
- 99038
- TH51
- 贵BY8156
- 贵80023
- 贵C87626
- 贵C87628

Status PTZ Color VOIP

Device Type MDVR

Vehicle Name 贵D62868

Vehicle ID 99057

Company

Their group Monitor Center

Status Online

Positioning Time 2014-12-19 11:16:24

Vehicle Location

Speed 82.40 km/h(North)

Costs Normal

Monitor:12 Online:3 Alarm:0 Offline:9 Idling:0 ACC OFF:0 GPS Invalid:1 Export Auto Sort

Device	Positioning Time	Position	Speed	Alarm
80002	2014-12-10 18:33:08	四川省宜宾市兴文县香山西路59号	1.70 km/h(North)	
贵C87626	2014-12-19 10:48:39	贵州省遵义市桐梓县茶店高速公路	7.70 km/h(West)	
贵D62868	2014-12-19 11:16:24	贵州省遵义市遵义县	82.40 km/h(North)	
贵C87628	2014-12-17 10:58:58	贵州省遵义市桐梓县茶店高速公路	0.00 km/h(North)	

Running: 00:02:05 Number of alarm through network Online:3 / Number of set loss:6 / Arrears:0 / Total:12 Line rate:25.00% / Lost rate:50.00%

Mobile monitoring and management platform

Welcome to log in, rntest System Video Map playback System Set Log Query Extend App

Dev List Polling My Map

Monitor Center(5/12)

- 桂KY7569
- CH1
- CH2
- CH3
- CH4
- 桂KY7586
- CH1
- CH2
- CH3
- CH4
- 桂KY7599
- 贵D62868
- 贵C26562
- 贵C A6446
- 80119
- 贵P5001
- 桂KY7507
- 桂80024

Status PTZ Color VOIP

Device type MDVR

Vehicle Name 桂KY7586

Vehicle ID 20041

Company

Their Group Monitor Center

Status Online

Positioning Time 2015-07-23 11:53:57

Location 广西壮族自治区玉林市博白县

Speed 0.00 km/h(Northeast)

Costs Normal

Monitor:2 Online:2 Alarm:0 Offline:0 Idling:0 ACC OFF:0 GPS Invalid:0 Export Auto Sort

Device	Positioning Time	Position	Speed	Alarm
桂KY7569	2015-07-23 11:53:47	广西壮族自治区玉林市博白县兴隆中路10号	0.00 km/h(West)	(On)
桂KY7586	2015-07-23 11:53:57	广西壮族自治区玉林市博白县S216	0.00 km/h(Northeast)	(On)

Running: 00:02:05 Number of alarm through network Online:6 / Number of set loss:4 / Arrears:0 / Total:12 Line Rate:50.00% / Lost Rate:33.33%

GPS Positioning & Overspeed Alarm

GPS data including Latitude, Longitude, and speed of vehicles will be saved along with video footages on to the SD card or hard disk, while playing the footages you can also check the the locations of your vehicles on map. Besides, alerts would be triggered while driving overspeed.



2TB + 128GB Large Capacity Storage

Up to 2TB hard disk & 128GB SD Card supported at the same time for saving video footages, once the disk is full, the DVR will overwrite the earlier files to make space for new files, which means you can have the DVR recording all the time to look after your vehicle.

Alarm I/O Alarm & Alarm Recording

The DVR supports 6 I/O inputs and 1 alarm output. You can set those Inputs to record vehicle braking, turning left/ right, door opening and more. Also, they can be simply used as a Panic Button, or work with other external sensors to trigger recording or send message to the monitor center.



8 CHANNEL 4G FULL D1 2TB+128GB HDD Mobile DVR

Main Features

HIS Solution, H.264 Compression, support 8CH D1 real-time video recording ;

3CH video output (2CH CVBS video, support Front&Rear output; VGA output for optional).

Exclusive pre-allocate File System protect data completeness, prevent SD Card fragment, ensure data stably and completely.

8-36V wide voltage with low power consumption.

Unique UPS Technology ensures the integrity of record when power failure occurs, even can for 8-10s.

HDD+SD Card Storage (Support 2.5" HDD, max 128G SD Card) protect from Shock & Dust damage; support USB port data backup and device update;

Support 2 USB ports, data backup and device upgrade.

Support 9CH alarm input (1CH analog input + 8CH IO alarm input), 2CH independent alarm output.

Support 2CH CAN interface.

Support HDD heating functions,can work in harsh environment.

Support GPS/BD/G-Sensor Extension module;

Realize real-time monitor through 3G/4G;

Support WIFI module, can download data automatically.

Support SMS remotely configure/control device;

Support Broadcast/Intercom/Text sent etc;can add oil sensor/temperature sensor/POS/LED Advertisement Panel;

Support voice call function.

Support OTA (On-The-Air) function, device can automatically update the new version, more convenient to maintain.

Support IOS/Android Phone Remote monitor.

Specifications

Item		Parameter
OS		Embedded Linux
System Language		English/Chinese/Customized
Video Compression		H.264 Video Compression
OSD		Overlays information such as date time and vehicle ID
GUI	Graphical User Interface	Support externally connect monitor screen. Setup system parameters with the remote control.
	Video Input	8CH standard definition input,aviation connector, 1.0Vp-p, 75Ω
	Video Output	2 CVBS output+ VGA output(Optional) , 1.0Vp-p, 75Ω,Aviation,Support 1CH Full Screen,4CH Screen,9CH screen.
	Preview	Support 1 channel ,4 channels and 9 channels preview.,Support Manual/Alarm Trigger full screen preview
	Resolution	D1/HD1/CIF, MAX: 8 channels D1.
Video Record System	Video Quality	0 -7 levels, 0 is the highest level. PAL: 100f/s , CCIR625 line,50field; NTSC: 120f/s, CCIR525 line,60field;
	Video Standard	CIF: 256Kbps ~ 1.5Mbps, 8 level video quality optional; HD1: 600Kbps ~ 2.5Mbps, 8 level video quality optional; D1: 800Kbps ~ 3Mbps, 8 level video quality optional;
	Record Mode	The default setting is auto recording after power on. Timed recording, alarm trigger recording and manual recording are supported.

Audio	Audio Input	8CH Aviation Connector
	Audio Output	2CH, headphone connect at front panel, BNC Connect on Back panel
	Audio Compression	G.726 compression format, 8kb/s
Alarm Input		7CH Alarm Input,1CH AD Input, impulse speed input,Alarm Linkage
Alarm Output		2CH alarm Output,Support Light/Sound alarm sensor,Oil/Power cut
Interface		3CH RS232, POS/Fuel Sensor/LED Advertisement Connection
		1CH 485 Interface,Connect PTZ Camera
Wireless		Support Built in 3G transmission,, WCDMA, CDMA2000,GPRS, EDGE;
GPS		Built in 4G module optional, TDD-LTE, FDD-LTE
		Support GPS
Storage	HDD	Max 2.5" 2TB HDD
	SD	Max 128GB SD Card Mirror Recording Keep Data Safety
	Updating	Support USB Updating, SD Card Updating,OTA Remote Updating
	File Format	0.264
	File System	Special FAT32 File System
	USB	USB Interface on Front Panel for data back up by U Disk,Hard Disk
Video Replay	Video Search	Search By Record Time/Record Type etc
	Playback	Max support 4CH Replay /Stop/Fast/Slow at same time
		Support forward and backward play at the speed of: x 2,x4,x8,x16
Power Consumption	Power Management	Wide Voltage.Support Timed/Delay off
	Voltage Input	DC:+6V ~ +36V
	Voltage Output	+12V-2.5A,+5V-2.5A
	Power	Working <5W
Working Environment	Temperature	-20°C to +70°C
	Humidity	20% to 80%
Security	Password	User/Admin 2 Level Different Password
Other	Size	200 (D)* 187(W)* 62(H) mm
	Net Weight	1.90 Kg
Optional Functions	Voice Call	Support voice call each other
	TTS Voice Broadcast	Support TTS voice broadcast function.
Option	Serial Expand	Support LED Advertisement Panel,Oil Sensor,POS,Bus Station
		Broadcaster,Car OBD,ect. external device

Our Services



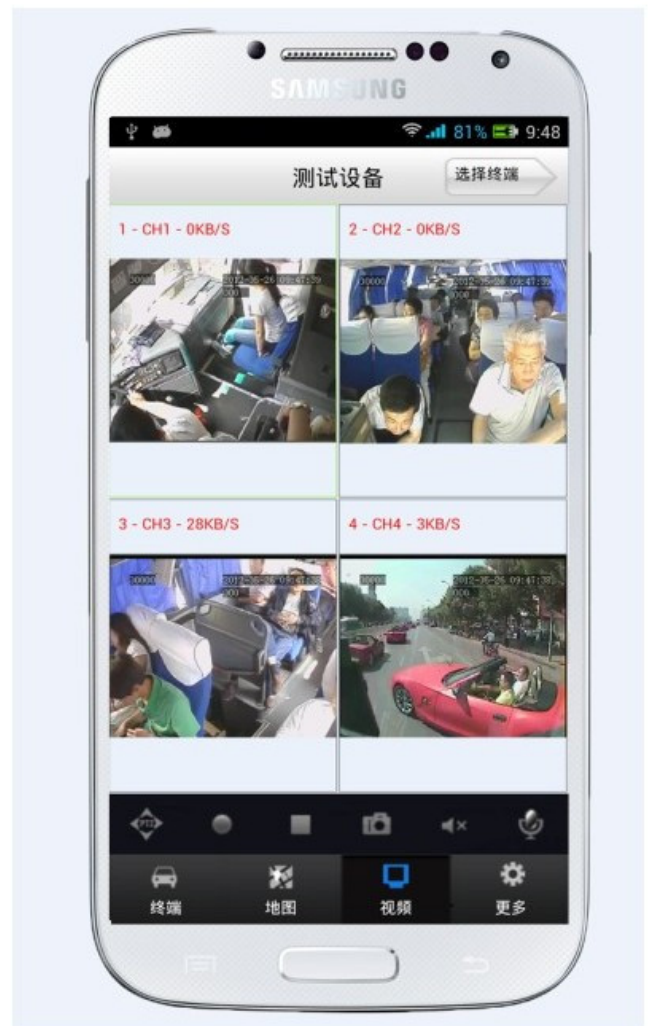
PC&Phone Monitoring

CMSV6 Interface

hand CMSV6 In Mobile Phone

Have all in the palm of your

Real-time monitoring via Mobile Phone
Support iPhone, Android, iPad system



Video & Audio Monitoring Online Vehicle GPS
Satellite Map Video Storage
PTZ control Tracking Display Picture Snapshot Voice intercom

FQA

Q: During playback, the map doesn't show?

A: Possible reasons are as follows;

- 1.Net cable did not connect to PC;
- 2.Net works, but the computer can not get to the Internet;

Q: When SD card and HDD records, How is the record coverage?

A: SD card and HDD will record circularly for each other. When they are full, they will delete the original video records respectively.

Q: The device was opened, HDD was installed, but the device can not record successful.

A: 1.Check the HDD/SD Card was formatted or not, the unformatted HH/SD Card can not be used. Enter into the Main Menu - System Setup - Formatting the new installed HDD/SD Card.

2. If the recording channel is closed, if set the timing recording, it can not recording when it beyond the period of timing recording.

3. If the HDD is connect well, if the HDD/SD light is on.



Richmor Brand Package



Standard Package



CAMERA Accessory



Shipping

Strong cooperated with DHL/UPS Etc for fast and safety delivery.

a. 2-5 days after payment cleared for sample order.

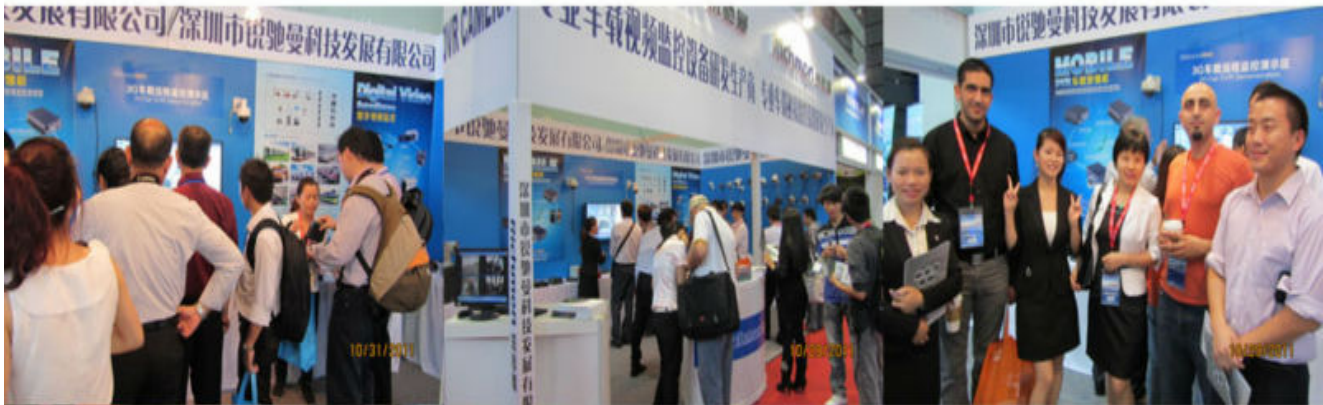
b. 5-10 days after payment cleared depends on order quantity for bulk order.



Exhibition

Richmor

CPSE2012 in Shenzhen



CPSE2013

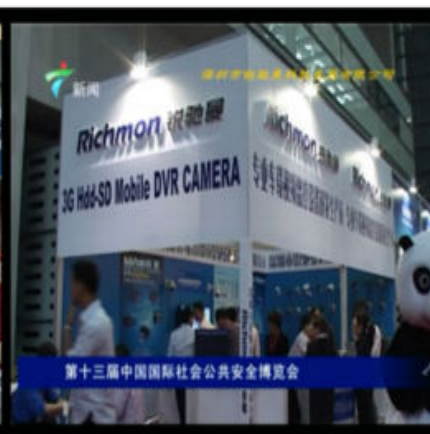
10.29-10.31

4 Booth we have

Welcome you !!!



CPSE2012-- Guangdong TV Report-Shenzhen Richmor



Certifications

