

**For police car dvr gps tracking system 4ch 3g 4g mdvr 3g sim  
card hdd mobile dvr**

(RCM-MDR 7104 Series)

**Remote Viewing Surveillance 3G 4G Mobile DVR Police car solution**





## 功能特点 Features



## Product features

### Remote Viewing Surveillance 3G 4G GPS WIFI HDD Mobile DVR

1. H.264 Compression Mode, support 4CH real-time 720P Mega Pixel AHD input and Analog Standard Definition camera input, or 2ch HD input + 2CH SD input.
2. Exclusive pre-allocate DVR Special File System Technology, solving repeatedly wipe cause file fragmentation, solving SD Card file system collapse, data loss and cannot find SD CARD and file garbled, ensure the integrity of the data.
3. 8-36V Adaptive Wide Voltage input, Super low Power Consumption Design;
4. HDD+SD Card storage( maximum support 2TB 2.5'' Hard disk and 128GB SD Card. ) It can be completely resist car Vibration, Dust and others cause data corruption;
5. Support GPS/BD/G-Sensor; High Reliability Aviation Connectors.
6. High Cost Performance with reliable stability, simple and clear operation menu.

## Detail pictures

Romote Viewing Surveillance 3G 4G GPS WIFI HDD Mobile DVR



**Richmor**

**Factory Audit**

**SMS Device configure**  
**OTA Remote Updating**  
**AHD 720P/960P**  
**2TB HDD+128GB SD Card**

**NEW**

The image shows a black, rectangular mobile DVR unit with a silver heat sink. The front panel features several ports: a DC 6-36V input, a 3G/4G antenna, a WiFi antenna, a GPS antenna, a NET (Ethernet) port, an IO port, and a PANEL port. There are also four circular ports labeled AV IN, 2, 1, 4, and 3. The unit is shown from a three-quarter perspective.

**CE** **FC**  

**Romote Viewing Surveillance 3G 4G GPS WIFI HDD Mobile DVR**



## Remote Viewing Surveillance 3G 4G GPS WIFI HDD Mobile DVR

### Front LED Indicators



## Remote Viewing Surveillance 3G 4G GPS WIFI HDD Mobile DVR



**Back Panel IO Indicators**



**Richmor surveillance GUI**

The main menu includes: Search, System setup, Rec setup, Network setup, Alarm setup, Peripheral setup, System Tools, System Information, as below:

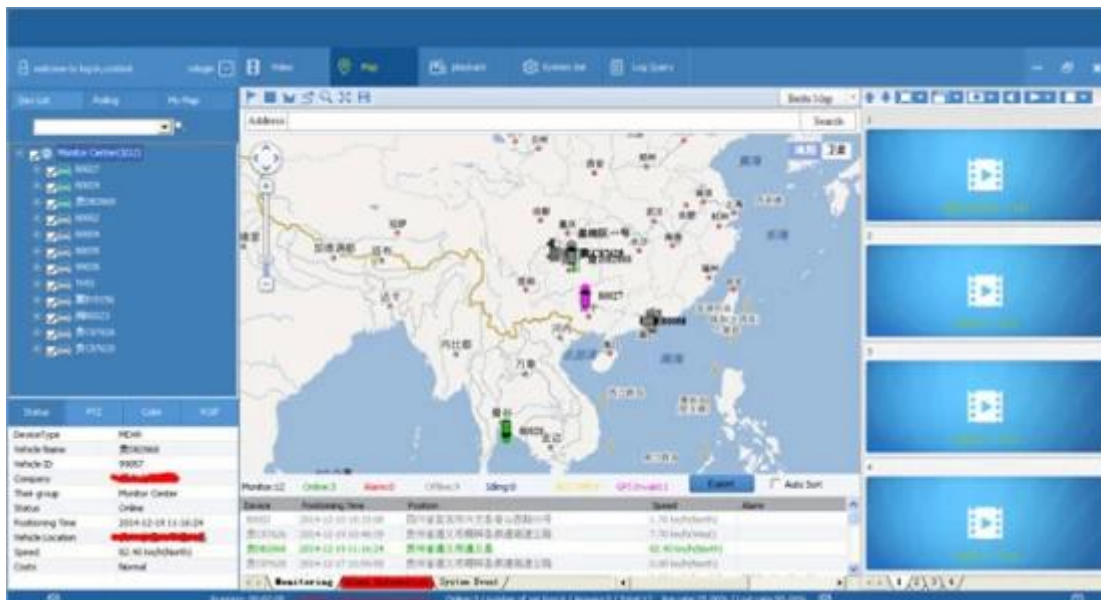


**RCM-MDR7104 Parameter Sheet**

Item		Parameter
OS		Linux
Language		English/Chinese/Customized
Video Compression		H.264 Compression
OSD		Overlays information such as date time and vehicle ID
GUI	Graphical User Interface	Setup system parameters with the remote control.
Video Record System	Video Input	4CH 720P AHD input/SD input/ mixed input,aviation connector, 1.0Vp-p, 75Ω
	Video Output	2CH CVBS+ VGA output for optional, 1.0Vp-p, 75Ω,Aviation,Support 1CH Full Screen, 4CH Screen view
	Preview	Support 1 channel and 4 channels preview., Support Manual/Alarm Trigger full screen preview
	Resolution	720P/D1/HD1/CIF, MAX:4 channels 720P and 4 channels D1
	Image Quality	0-7 levels, 0 is the highest level.
	Video Standard	PAL: 100f/s , CCIR625 line,50field; NTSC: 120f/s, CCIR525 line,60field; CIF: 256Kbps ~ 1.5Mbps, 8 level video quality optional; HD1: 600Kbps ~ 2.5Mbps, 8 level video quality optional; D1: 800Kbps ~ 3Mbps, 8 level video quality optional; 720P: 4Mbps-6Mbps, multi level video quality optional
	Record Mode	The default setting is auto recording after power on. Timed recording, alarm trigger recording and manual recording are supported.
Audio	Audio Input	4CH Aviation Plug Input
	Audio Output	2CH,headphone connect at front panel, BNC Connect on Back panel
	Compression	G.726 compression, 8KB/s speed
Alarm Input		7CH Alarm Input,1CH AD Input, impulse speed input,Alarm Linkage
Alarm Output		2CH Alarm Output,Support Light/ Sound alarm sensor,Oil/Power cut off
Interface		3CH RS232, POS/Fuel Sensor/ LED Advertisement Connection
		2CH 485 Interface,Connect PTZ Camera
		2CH CAN interface
Wireless Transmission		Support Built in 3G transmission, WCDMA, CDMA2000,GPRS, EDGE Built in 4G module optional, TDD-LTE, FDD-LTE
GPS Position		Support Built GPS/BD Module
	HDD	Max 2.5" 2TB HDD
Storage	SD Card	Max 128GB SD Card Mirror Recording Keep Data Safety
	Update	Support USB Updating, SD Card Updatin, OTA Remote Updating
	File Format	H.264
	File System	Special FAT32 File System
	USB	USB Interface on Front Panel for data back up by U Disk,Hard Disk

Record Replay	Video Search	Search By Record Time/Record Type etc
	Playback	Max support 4CH Replay /Stop/Fast/Slow at same time
		Support forward and backward play at the speed of: x 2,x4,x8,x16.
Security		User/Admin 2 Level Different Password
Optional Functions	Voice Call	Support voice call each other
	Serial Expand	Support LED Advertisement Panel□Oil Sensor□POS□Bus Station Broadcaster□ Car OBD,ect.external device
Voltage & Power	Power Management	Wide Voltage.Support Timed/Delay off
	Input Voltage	DC:+6V - +36V
	Power	Working □5W
	Temperature	-20℃ - +70℃
Working Environment	Humidity	20% - 80%
	Size	200 □D□* 187□W□* 62□H□ mm
Others	Weight	1.90 Kg

## Player software interface (CMSV6 In PC )



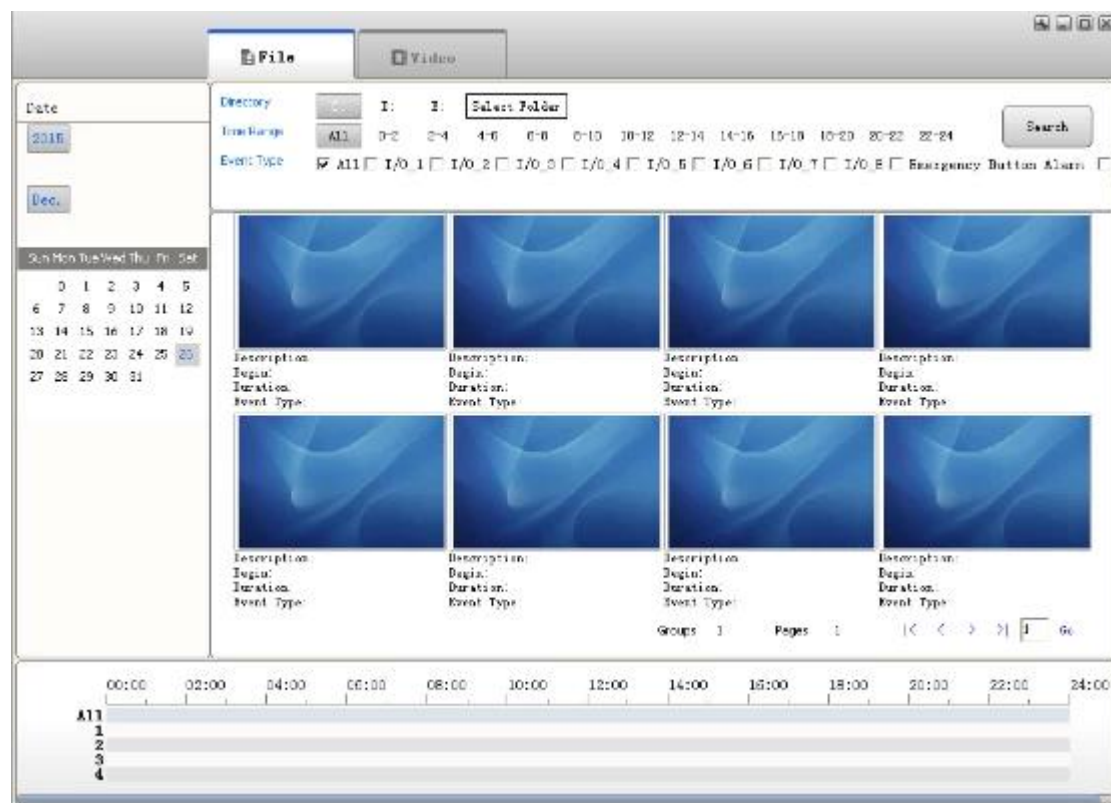
## CMSV6 In Mobile Phone.

Have all in the palm of your hand

## Real-time monitoring via Mobile Phone --Support iPhone, Android, iPad system

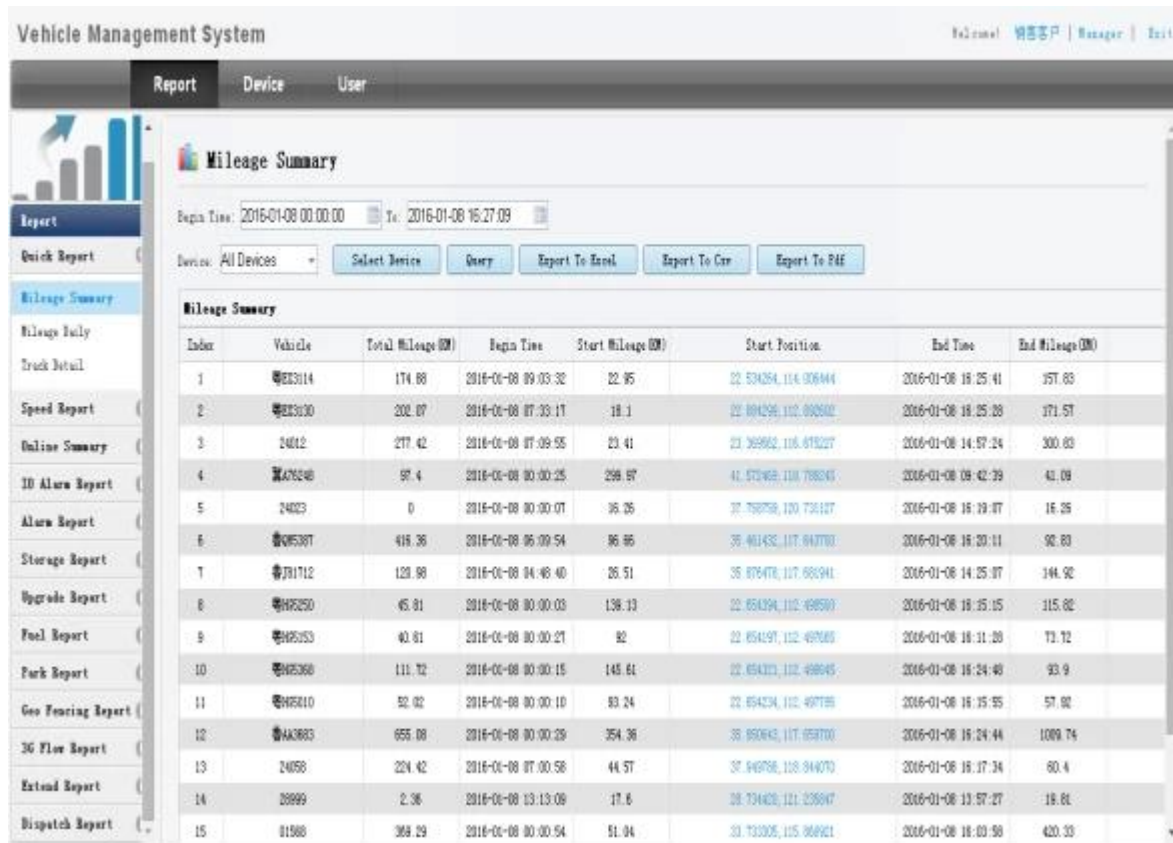


## Surveillance platform Playback





## Richmor Mobile DVR Mileage Summary



## Richmor actual case



## Application

**Widely used in passenger car,bus,taxi,school bus,lorry,dangerous vehicle, personal car and ship etc.**



Travelling Bus



Public Bus



Dangerous chemical car



Tobacco Logistics



Taxi



Truck



School Bus



Express Logistics



Road Police Car



Border Car



Traffic Inspection Car



Civil Work Vehicle



Escort Vehicle



Ambulance



Fixed place monitor



Ship Monitor

## Buying Guides

## Packaging

1 unit with all standard accessories such as AV Cables/IO Cable/Power Cable/Key etc

Neutral paper box or Color paper box with Logo Richmor printed,also welcome customized package.



Richmor Brand Package



Standard Package

## Shipping

**Strong cooperated with DHL/UPS Etc for fast and safety delivery.**

- a. 2-5 days after payment cleared for sample order.
- b. 5-10 days after payment cleared depends on order quantity for bulk order.

## Payment



## Service

- 1. Well Trained Sales team and engineers for fast and professional support
- 2. OEM/ODM Service



## CUSTOMER SATISFACTION

- Excellent Aftersale service
- 12 months warranty
- 24 hours customer service
- We understand the importance of our customers

## Certifications



## Exhibition



**Richmor**

CPSE2012 in Shenzhen



CPSE2013

10.29-10.31

4 Booth we have

Welcome you !!!



CPSE2012-- Guangdong TV Report-Shenzhen Richmor



**About us&Customers:**





**EXCELLENT SUPPORT**



**Our factory and team**





## **What is our expectation**

**Being your helpful and long term partner meeting your requirement.**

**Any question about your vehicle project, contact our representative Vicky.**

**Email: [overseasales-7@rcmcctv.com](mailto:overseasales-7@rcmcctv.com)      Skype: rcmcctvsales7**