

Police car surveillance 1080P HD 3G 4G WIFI GPS Mobile DVR

(RCM-MDR 7105 Series)

The most outstanding feature for this series DVR is:

-----5CH Million Pixels video recording which means

(4CH real-time 720p Analog HD input + 1CH 1080P network IP Camera input)

Product features

Remote Viewing Surveillance 5ch GPS WIFI 3G 4G HDD Mobile DVR/ NVR with 1 CH IPC

H.264 Compression Mode, Max support 5CH Million pixels HD video surveillance/ recording/ playback (4CH real-time 720P Million Pixels AHD input or 4CH Analog Standard Definition camera input, or 2CH HD input+2CH SD input) + 1CH 1080P IP Camera input ; Exclusive pre-allocate DVR Special File System Technology,Solving repeatedly wipe cause file fragmentation, solving SD card file system collapse, data loss and cannot find SD card and file garbled, ensure the integrity of the data. 8-36V Adaptive Wide Voltage input, Super Low Power Consumption Design;HDD+SD card storage (maximum support 2TB 2.5" hard disk and 128GB SD card.) It can be completely resist car Vibration,Dust and others cause data corruption; Support GPS/BD/G-SENSOR ; High Reliability Aviation Connectors,High Cost Performance with reliable stability,simple and clear operation menu .

RCM-MDR 7105 Series	
Model NO.	Function
RCM-MDR7105WGXX	3G, GPS, G-Sensor, IPC
RCM-MDR7105FGXX	3G, 4G, GPS, G-Sensor, IPC
RCM-MDR7105GWGX	3G, WIFI, GPS, G-Sensor, IPC
RCM-MDR7105FGWX	3G, 4G, WIFI, GPS, G-Sensor, IPC

Detail pictures

Remote Viewing Surveillance 5ch GPS WIFI 3G 4G HDD Mobile DVR/ NVR with 1 CH IPC



SMS Device configure
OTA Remote Updating
AHD 720P/960P
2TB HDD+128GB SD Card

Richmor



Remote Viewing Surveillance 5ch GPS WIFI 3G 4G HDD Mobile DVR/ NVR with 1 CH IPC



Remote Viewing Surveillance 5ch GPS WIFI 3G 4G HDD Mobile DVR/ NVR with 1 CH IPC

Front LED Indicators



Back Panel IO Indicators



Richmor surveillance GUI

The main menu includes: Search, System setup, Rec setup, Network setup, Alarm setup, Peripheral setup, System Tools, System Information, as below:



RCM-MDR7105 Parameter Sheet

Item		Parameter
OS		Linux
Language		English/Chinese/Customized
Video Compression		H.264 Compression
OSD		Overlays information such as date time and vehicle ID
GUI	Graphical User Interface	Setup system parameters with the remote control.
Video Record System	Video Input	4CH real-time 720p million pixels Analog HD input / 4CH analog standard definition input/2CH analog input+ 2CH HD mixed input+ 1CH 1080P network camera input), aviation connector, 1.0Vp-p, 75Ω
	Video Output	2CH CVBS output+1CH VGA output for optional,1.0Vp-p, 75Ω,Support 1CH Full Screen,4CH Screen view
	Preview	Support 1 channel and 4 channels preview, 5 channels splice preview Support Manual/ Alarm Trigger full screen preview
	Resolution	1080P/720P/D1/HD1/CIF, MAX:4 channels of 720P + 1080P / 4 channels of D1
	Image Quality	1-4 levels, 1 is the highest level.
	Video Standard	PAL: 100f/s , CCIR625 line,50field; NTSC: 120f/s, CCIR525 line,60field; CIF: 256Kbps ~ 1.5Mbps, 8 level video quality optional; HD1: 600Kbps ~ 2.5Mbps, 8 level video quality optional; D1: 800Kbps ~ 3Mbps, 8 level video quality optional; 720P: 4Mbps-6Mbps, multilevel video quality optional
	Record Mode	The default setting is auto recording after power on. Timed recording, alarm trigger recording and manual recording are supported.
Audio	Audio Input	4CH Aviation Plug Input
	Audio Output	2CH,headphone connect at front panel, BNC Connect on Back panel
	Compression	G.726 compression, 8KB/s speed
Alarm Input		7CH Alarm Input,1CH AD Input, impulse speed input,Alarm Linkage
Alarm Output		2CH Alarm Output,Support Light/ Sound alarm sensor,Oil/Power cut off
Interface		3CH RS232, POS/Fuel Sensor/ LED Advertisement Connection
		2CH 485 Interface,Connect PTZ Camera
Wireless Transmission		Support Built in 3G transmission,WCDMA, CDMA2000,GPRS, EDGE Built in 4G module optional, TDD-LTE, FDD-LTE
GPS Position		Support Built GPS/BD Module
	HDD	Max 2.5" HDD

Storage	SD Card	Max 128GB SD Card Mirror Recording Keep Data Safety
	Update	Support USB Updating, SD Card Updating, OTA Remote Updating
	File Format	H.264
	File System	Special FAT32 File System
	USB	USB Interface on Front Panel for data back up by U Disk,Hard Disk
Record Replay	Video Search	Search By Record Time/Record Type etc
	Playback	Max support 4CH Replay /Stop/ Fast/Slow at same time
		Support forward and backward play at the speed of: x 2,x4,x8,x16.
Security		User/Admin 2 Level Different Password
Optional Functions	Voice Call	Support voice call each other
	TTS Voice Broadcast	Support TTS voice broadcast function.
	Serial Expand	Support LED Advertisement Panel Oil Sensor POS Bus Station Broadcaster Car OBD,etc. external device
Voltage & Power	Power Management	Wide Voltage.Support Timed/Delay off/ over-load/Reversing connection/voltage shortage/ short circuit etc.
	Input Voltage	DC:+6V - +36V
	Power	Working 5W
Working Environment	Temperature	-20℃ - +70℃
	Humidity	20% - 80%
Others	Size	200 mm* 187mm* 62mm
	Weight	1.90 Kg

Detail Features

1. Support 5CH video input, video recording and playback (4CH real-time 720p mega pixels Analog HD input /4CH analog standard definition input/2CH high definition & 2CH analog standard definition mixed input+1CH 1080P network camera input)
2. 3CH video output (2CH CVBS video output,Support front and rear output; 1CH VGA output for optional)
3. Exclusive pre-allocate DVR Special File System Technology,Solving repeatedly wipe cause file fragmentation, solving storage file system crash, data loss and cannot find storage media and file garbled, ensure the integrity of the data.
4. 8-36V wide voltage with low power consumption. Support Reverse Protection(over-voltage/over-current protection.Output max to 10Amps current, support 12V & 5V peripheral equipment power supply. Ultra low power design;
5. Unique UPS Technology ensures the integrity of record when power failure occurs,even can last for 8-10s.
6. HDD+SD Card Storage (Support 2.5"HDD, max 128G SD Card) protect from Shock & Dust damage;support USB port data backup and device update;
7. Support 2 USB ports, data backup and equipment upgrades.
8. Support 9CH alarm input (1CH Analog input + 8CH IO alarm input),2CH Independent alarm output.

9. Support 2 CAN interface.
10. Support HDD heating functions,can work in harsh environment.
11. Support GPS/BD/G-Sensor Extension module;
12. Realize real-time monitor through 3G/4G;
13. Support Broadcast/Intercom/Text sent etc;can add oil sensor/temperature sensor/POS/LED Advertisement Panel;
14. Support OTG device upgrade automatically, , device can automatically upgrade version update, maintenance is more convenient
15. Support IOS/Android Phone Remote monitor
16. High reliability aviation connectors, high cost performance, stable and reliable.

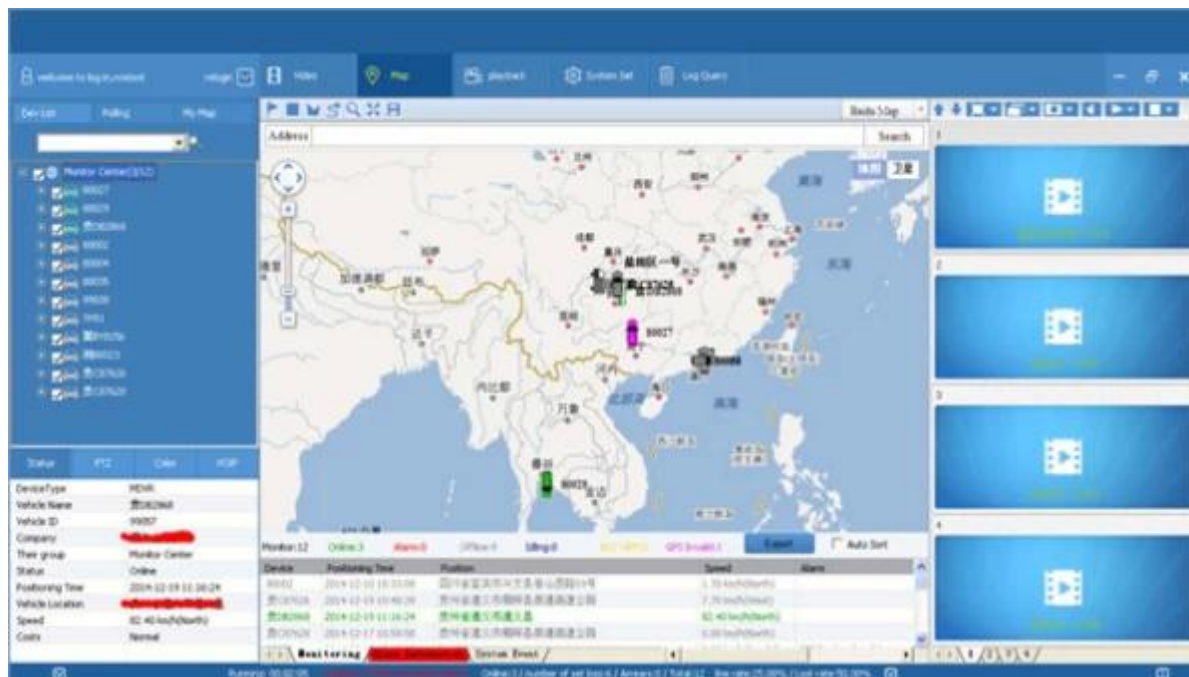
Accessory Million Pixels HD Vehicle IP camera



IP Camera Features

1/2.86"2.36MP Panasonic progressive scan CMOS, Support H.264 compression, Color 0.01 Lux @ 30IRE, F1.4 black and white 0.005Lux @ 30IRE, F1.4, Max resolution:1920*1080@25/30fps; Three stream: 1 080p+Full D1+CIF, Support distortion image correction, wide dynamic, 3D filter and digital noise reduction; BNC, built-in audio MIC collection, 10/100M network port, DC12V interface, 2.8 lens. Working temperature: -20-- 60 °C.

Player software interface (CMSV6 In PC)



CMSV6 In Mobile Phone.

Have all in the palm of your hand

Real-time monitoring via Mobile Phone --Support iPhone, Android, iPad system



Surveillance platform Playback



Richmor Mobile DVR Mileage Summary

Vehicle Management System Welcome! 管理员 | Manager | Exit

Report **Device** **User**

Mileage Summary

Begin Time: 2016-01-08 00:00:00 To: 2016-01-08 16:27:09

Device: All Devices [Select Device](#) [Query](#) [Report To Excel](#) [Report To Csv](#) [Report To Pdf](#)

Index	Vehicle	Total Mileage (KM)	Begin Time	Start Mileage (KM)	Start Position	End Time	End Mileage (KM)
1	粤E23014	174.88	2016-01-08 09:03:32	22.95	22.52424, 114.00844	2016-01-08 16:25:43	157.83
2	粤E23030	202.07	2016-01-08 07:33:17	18.1	22.80429, 112.89292	2016-01-08 16:25:28	171.57
3	24312	277.42	2016-01-08 07:08:55	23.41	23.36882, 116.675227	2016-01-08 14:57:24	300.83
4	冀A76248	97.4	2016-01-08 00:00:25	299.97	41.572989, 118.708245	2016-01-08 09:42:38	41.08
5	24323	0	2016-01-08 00:00:07	18.26	37.758758, 120.731127	2016-01-08 16:19:07	38.28
6	鲁QV5307	416.36	2016-01-08 06:08:54	96.66	36.461432, 117.643793	2016-01-08 16:20:11	82.63
7	鲁J81712	120.88	2016-01-08 04:48:40	28.51	35.376475, 117.681941	2016-01-08 14:25:07	144.92
8	粤W25250	45.81	2016-01-08 00:00:03	139.13	22.654294, 112.498993	2016-01-08 16:15:15	115.82
9	粤W25153	48.61	2016-01-08 00:00:27	92	22.654197, 112.497965	2016-01-08 16:11:28	73.72
10	粤W25368	111.72	2016-01-08 00:00:15	145.61	22.654321, 112.498645	2016-01-08 16:24:48	93.9
11	粤W25010	52.02	2016-01-08 00:00:10	93.24	22.654234, 112.497795	2016-01-08 16:15:55	57.92
12	鲁AA3883	895.88	2016-01-08 00:00:29	354.36	36.95843, 117.658700	2016-01-08 16:24:44	1009.74
13	24358	224.42	2016-01-08 07:00:58	44.57	37.948708, 118.844370	2016-01-08 16:17:34	60.4
14	28899	2.38	2016-01-08 13:13:09	17.6	28.734463, 121.238847	2016-01-08 13:57:27	19.66
15	01368	369.29	2016-01-08 00:00:54	51.04	33.733305, 115.868921	2016-01-08 16:03:58	420.33

Remote Viewing Surveillance 3G 4G WIFI GPS Mobile DVR Taxi solution

Richmor 锐驰曼



功能特点 Features



实时监控, GPS定位
Real-time Video,
GPS positioning

运营管理
Fleet Management



采用高压压缩比, 图像清晰的H.264编码格式, 支持开机录像, 定时录像及报警录像, 支持ACC熄火延时录像。内置GPS全球定位系统, 可通过3G网络远程查看实时视频, 车辆位置, 回放历史录像。支持手机远程监控。Adopt H.264 Video Compression, support Auto Recording, Timed Recording, Alarm Recording, also ACC Power on/off Recording. Built-in GPS System, can view the real time video and Vehicle Position, replay Historical Video through 3G, Mobile Phone real time view supported.

具有线路调度, 运营监控管理功能; 可通过可视化调度指挥, 语音广播, 双向对讲, 语音通话, 文字短信等信息交互, 及时处理各种事件, 比如塞车, 车辆故障, 交通事故等。
With Line Scheduling and operation management function; can handle all kinds of emergency thing such as heavy traffic, Vehicle Breakdown, traffic accident through Real time video, Broadcast, Intercom talk back function etc.



出租车
监控解
决方案



紧急报警 Emergency Alarm

遇到抢劫等突发事件时, 驾驶员可隐蔽地触发紧急报警按钮, 管理中心会立即发出警报声, 自动弹出现场视频, 启动录像, 工作人员可根据现场情况及时应对处理。
Taxi Driver can click the Emergency Button, concealed when meet rob, a small window will show with sound alarm in center office and start recording, the office man can handle it according the video condition.



历史轨迹查询
GPS Position and Path Track

车辆行驶的历史轨迹记录, 监控管理中心可以在电子地图上远程回放, 重现车辆的行驶过程。
A blue mark in the map show the vehicle driving route automatically and continuous, refresh the Vehicle latest Position. Remote replay the vehicle driving route in map at center office.



广告发布 Advertising

控制和下发LED显示屏的显示信息, 包括各种商业广告信息、公益信息、政府的方针政策、交通信息、天气预报等各种信息。
Control and sent the information including: Commercial information, public information, government policies and regulations, traffic information, weather forecast etc to LED Screen, fast reaction convenient for information advertise and control.



乘客状态显示
Passenger status display

不用开启视频监控, 运营管理中心也可实时显示出租车辆的载客状态, 便于统一调度管理, 高效利用资源。
Without Real time Video, the office man can also know the Taxi Passenger condition, convenient for Taxi fleet management saving the resource, more efficient.

Richmor Actual Case



Application

Widely used in passenger car, bus, taxi, school bus, lorry, dangerous vehicle, personal car and ship etc.



Travelling Bus



Public Bus



Dangerous chemical car



Tobacco Logistics



Taxi



Truck



School Bus



Express Logistics



Road Police Car



Border Car



Traffic Inspection Car



Civil Work Vehicle



Escort Vehicle



Ambulance



Fixed place monitor



Ship Monitor

Buying Guides

Packaging

1 unit with all standard accessories such as AV Cables/IO Cable/Power Cable/Key etc



AV Input Cables



AV Output Cable



IO Cables



Power Cable



Remote Control



CD (Manual & Software inside)

Neutral paper box or Color paper box with Logo Richmor printed,also welcome customized package.



Richmor Brand Package



Standard Package

Shipping Info

Estimated Shipping Time

- a. 3-5 working days after payment cleared for sample order.
- b. 5-10 working days after payment cleared depends on order quantity for bulk order.

Remarks:

- 1.Order will be dispatched before next 2 working day after full payment is done,48 hours aging time;
- 2.Related documents will be sent after order is dispatched,please check mail;
- 3.All parcels will be shipped by DHL/TNT/UPS/EMS/FedEx/Air etc according your option;

Payment Info

- 1.T/T;Western Union;Paypal optional;
- 2.30% deposit,balance be paid before delivery

Remarks:

Please sent bank slip when payment done,according this we will arrange the production

Warranty Info

Free Replacement:

Mobile DVR Recorder can replace free under conditions within 15 days after sale,in the precondition of our quality problem,non-artificial damage

Supplier Warranty:

We offer ONE YEAR warranty on Vehicle Mobile DVR Recorder,if your item has any warranty issue please contact us for a satisfying solution

Remark:

All qualified returns/replacement must be guided by us,we may not accept your return without informing us in advance

Service

1. Well Trained Sales Team and strong engineers for fast and professional support.

2. OEM/ODM Service



Cert ifications

Certification



Exhibition

Richmor

CPSE2012 in Shenzhen



CPSE2013

10.29-10.31

4 Booth we have

Welcome you !!!



CPSE2012-- Guangdong TV Report-Shenzhen Richmor



About us&Customers:





EXCELLENT SUPPORT



What is our expectation

Being your helpful and long term partner meeting your requirement.

Any question about your vehicle project, contact our representative Vicky.

Email: overseasales-7@rcmctv.com Skype: [rcmctvsales7](https://www.skype.com/en/contacts/overseasales7)