

Mobile safety sensor for vehicle protection

with 4ch camera input

(RCM-MDR210 Series)

Mobile wall with wifi

We also have more kinds of DVR, click on the links below to learn more about your different needs

1. [Hard reset dvr H.264](#)
2. [H.264 remote control](#)
3. [1channel dvr supplier](#)

Product properties

4ch mobile DVR 4G 720P 3G 4G

1. H.264 compression mode, supports 4CH real-time 720P megapixel AHD input and analog camera standard input;
2. Exclusive pre-allocate DVR special file System technology, solve repeatedly erase the cause of file fragmentation, solution packing SD card file system, data loss and can not find SD card and corrupted file, ensure data integrity.
3. 10-36 V adaptive broadband input, very low power design;
4. SD Memory Card (2SD cards, each 128GB maximum support) Can be fully resilient to car vibrations. Dust and others cause data corruption;
5. Support for GPS / BD / G-Sensor; Connectors for high aviation reliability.
6. High operating performance with reliable stability, simple and clear operation menu.

| RCM-MDR Series 210 | |
|--------------------|---|
| Model number. | Function |
| RCM-MDR210XXXI | Basic recording, G-sensor, SD card slot |

| | |
|----------------|---|
| RCM-MDR210XGXX | GPS, G-Sensor, One SD card slot |
| RCM-MDR210WGSX | 3G, GPS, G-Sensor, Dual SD slot |
| RCM-MDR210FGSX | 3G, 4G, GPS, G-Sensor, Dual SD slot |
| RCM-MDR210WGDY | 3G, WIFI, GPS, G-Sensor, Dual SD slot |
| RCM-MDR210FGDY | 3G, 4G, WIFI, GPS, G-sensor, Dual SD slot |

Detailed pictures

4ch mobile DVR 4G 720P 3G 4G



Device back view

4ch mobile DVR 4G 720P 3G 4G



Device front view

4ch mobile DVR 4G 720P 3G 4G

LED Indicators



4ch mobile DVR 4G 720P 3G 4G

Back Panel



List of parameters RCM-MDR210

| Item | | Parameter |
|------------------------|---------------------------|--|
| OS | | Linux |
| Language | | Chinese / English / adapted |
| Video compression | | H.264 |
| OSD | | Overlaps information such as date and vehicle ID |
| GUI | Graphical user experience | Set the system parameters using the remote control. |
| Video recording system | Video input | 4CH 720P AHD input / SD input / mixed video input, air connector, 1.0Vp-p, 75Ω |
| | Video output | 1CH CVBS + 1CH VGA output, 1.0Vp-p, 75 Ω, Aviation, Support 1CH Full Screen, 4CH Screen |
| | Preview | 1 Channel and 4 Channel Preview Support. Support / Full Screen Alarm Manual |
| | Distinction | 720P / D1 / HD1 / CIF, MAX: 4 channels 720P |
| | Video quality | 0-7 levels, 0 is the highest level. |
| | Standard video | PAL: 100f / s, CCIR625 series, 50field; NTSC: 120f / s, CCIR525 series, 60field; CIF: 256 Kbps ~ 1.5 Mbps, 8 video quality levels optional; HD1: 600 kbps ~ 2.5 Mbps, optional 8-level quality; D1: 800 Kbps ~ 3 Mbps, 8 video quality levels optional; 720P: 4Mbps-6Mbps, optional multi-level video quality |
| | Record mode | The default setting is automatic recording after power-up. Timed recording, recording of trigger alarm and manual recording is supported. |

| | | |
|-------------------------|---|---|
| Sound | Audio input | 4CH, aerial plug |
| | Audio output | 1CH, air plug |
| | Compression | Compression G.726, 8 kB / s |
| Alarm Input | | Input 4Ch Alarm, types of alarm support |
| Alarm Output | | 1CH alarm output |
| Communication interface | | 1CH RS232 or 1CH RS485 for optional accessories |
| Position | | Support Built-in GPS / BD module built into the G-sensor, can play and analyze a route driven by a vehicle. |
| wireless transmission | | Support Built-in wireless 3G / 4G, WCDMA, CDMA2000, TDD-LTE, FDD-LTE |
| Motion Detection | | Motion detection alarm support. (You can set the duration of video recording after the alarm on the platform.) |
| G-Sensor | | Support the G-Sensor |
| Storage space | SD | Double SD card, each 128GB SD card memory card |
| | Improve | Remote SD card upgrade support |
| | File format | H.264 |
| | File system | Special file system FAT32 |
| Play video | Video Search | Search by record time / record type, etc. |
| | Playback | Maximum Support 4CH Replay / Stop / Fast / Slow at the same time Support forward and backward playback at speeds of: x 2, x4, x8, x16. |
| | | Voltage & Power supply |
| Power management | Wide Voltage.Support Timed / Delay | Voltage input |
| | DC: + 8V ~ + 36V | Power consumption |
| | Normal Work & It; 14 W, Standby & 0.5W | Temperature |
| | -20 ° C to + 70 ° C | Working environment |
| Humidity | 20% to 80% | Password |
| | User / Admin 2 levels of another password | Safety |
| Size | 112 (W) x 36 (H) x 138 (D) mm | other |
| Net weight | 360g | GUI tracking Richmor |

The main menu includes: Search, System setup, Rec setup, Network setup, Alarm setup, Peripheral setup, System Tools, System Information, as below:



hmoorCrowd ileDVR Mileage e SdifficultyPla

Vehicle Management System

[Welcome](#)
[请登录](#)
[Manager](#)
[Exit](#)

Report

Device

User

Report

Quick Report

Mileage Summary

Mileage Daily

Track Detail

Speed Report

Online Summary

ID Alarm Report

Alarm Report

Storage Report

Upgrade Report

Fuel Report

Park Report

Geo Fencing Report

3G Flow Report

Extend Report

Dispatch Report

Mileage Summary

Begin Time: 2016-01-08 00:00:00

To: 2016-01-08 16:27:09

Device: All Devices

Select Device

Query

Export To Excel

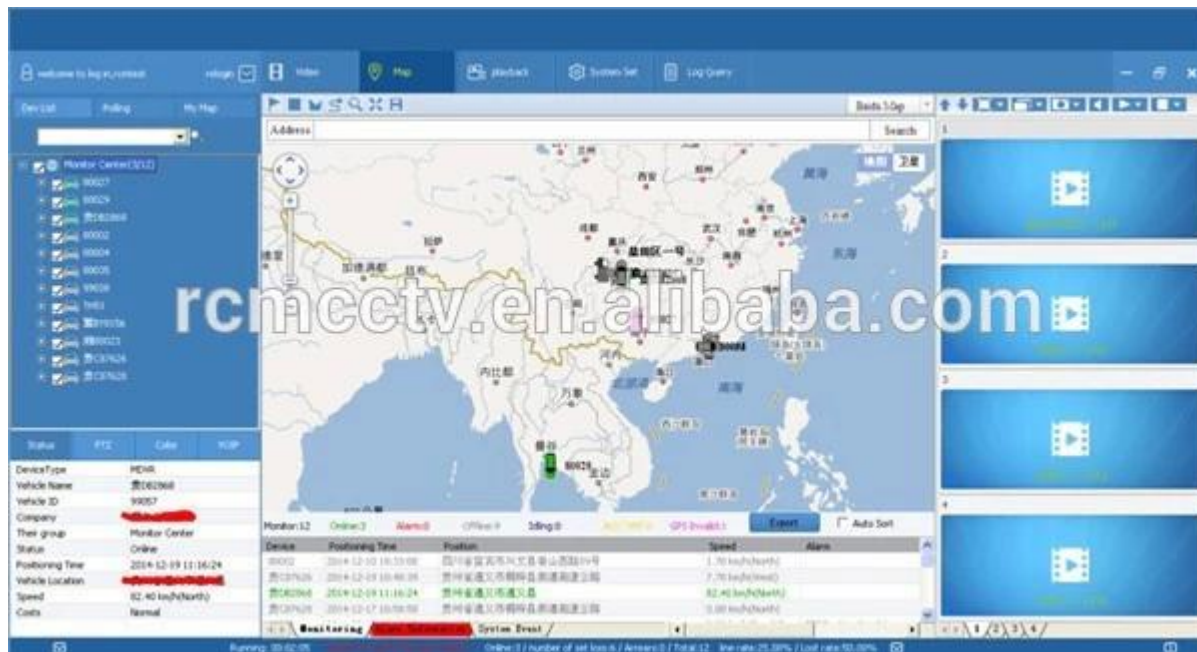
Export To Csv

Export To Pdf

Mileage Summary

| Index | Vehicle | Total Mileage(KM) | Begin Time | Start Mileage(KM) | Start Position | End Time | End Mileage(KM) |
|-------|---------|-------------------|---------------------|-------------------|-----------------------|---------------------|-----------------|
| 1 | 鄂E3114 | 174.88 | 2016-01-08 09:03:32 | 22.95 | 22.524294, 114.000444 | 2016-01-08 16:25:41 | 157.83 |
| 2 | 鄂E3130 | 202.07 | 2016-01-08 07:33:17 | 16.1 | 22.884236, 112.882802 | 2016-01-08 16:25:39 | 171.57 |
| 3 | 24032 | 277.42 | 2016-01-08 07:09:55 | 23.41 | 23.369582, 116.673227 | 2016-01-08 14:57:24 | 300.83 |
| 4 | 鄂A78248 | 97.4 | 2016-01-08 06:00:25 | 296.97 | 41.572489, 116.788245 | 2016-01-08 06:42:59 | 41.09 |
| 5 | 24023 | 0 | 2016-01-08 06:00:07 | 16.26 | 37.759759, 120.731127 | 2016-01-08 16:19:07 | 16.26 |
| 6 | 鄂Q5387 | 416.36 | 2016-01-08 06:09:54 | 96.88 | 36.481432, 117.647783 | 2016-01-08 16:20:11 | 92.83 |
| 7 | 鄂J76172 | 120.98 | 2016-01-08 04:48:43 | 26.51 | 36.876478, 117.681941 | 2016-01-08 14:25:07 | 144.92 |
| 8 | 鄂B3250 | 45.64 | 2016-01-08 00:00:03 | 138.13 | 22.654294, 112.689593 | 2016-01-08 16:15:15 | 115.82 |
| 9 | 鄂W5153 | 48.61 | 2016-01-08 00:00:27 | 82 | 22.654187, 112.487665 | 2016-01-08 16:11:28 | 73.72 |
| 10 | 鄂B3368 | 111.72 | 2016-01-08 00:00:15 | 145.61 | 22.654231, 112.489645 | 2016-01-08 16:24:48 | 93.9 |
| 11 | 鄂B5010 | 52.02 | 2016-01-08 00:00:10 | 83.24 | 22.654234, 112.487785 | 2016-01-08 16:15:55 | 57.82 |
| 12 | 鄂A3683 | 895.06 | 2016-01-08 00:00:29 | 354.36 | 36.960643, 117.659701 | 2016-01-08 16:24:44 | 1009.74 |
| 13 | 24058 | 224.42 | 2016-01-08 07:00:58 | 44.57 | 37.949788, 116.644070 | 2016-01-08 16:17:34 | 60.4 |
| 14 | 28999 | 2.36 | 2016-01-08 13:11:09 | 17.6 | 28.734420, 121.238947 | 2016-01-08 13:57:27 | 19.81 |
| 15 | 01568 | 368.29 | 2016-01-08 00:00:54 | 51.04 | 35.733305, 115.669921 | 2016-01-08 16:03:58 | 420.33 |

SoftwareThe real case of Richmorapplication



It is widely used in passenger and bus, taxi, school bus, truck, dangerous vehicle, passenger car and boat etc.



Purchase

G



Travelling Bus



Public Bus



Dangerous chemical car



Tobacco Logistics



Taxi



Truck



School Bus



Express Logistics



Road Police Car



Border Car



Traffic Inspection Car



Civil Work Vehicle



Escort Vehicle



Ambulance



Fixed place monitor



Ship Monitor

Guides Packaging1 unit with all standard accessories such as AV cables / IO cable / power cord / key, etc.

Neutral paper boxes or colored paper boxes with Richmor logo printed, we also welcome our own package.

Conditions of cooperation

Transport information



Richmor Brand Package

Standard Package

Estimated time of shipment

A. 3-5 business days after the payment for the standard order payment.

b. 5-10 business days after the payment is settled depends on the quantity of the order for the bulk order.

Comment:

1. Order will be shipped within 2 business days after payment, 48 hours of aging;

2. Offering documents will be sent after sending the order, please check your mail;

3. All packages will be delivered by DHL / TNT / UPS / EMS / FedEx / Air etc. At your choice;

Payment info

1. T / T, Western Union, Paypal Optional;

2.30% deposit, the balance is paid before delivery

Comment:

After making the payment, please send a bank statement to ensure production

Warranty information

Free refund:

The DVR Mobile Recorder can be replaced free of charge in conditions up to 15 days after the sale, in the conditions of our problem with quality, non-artificial damage

Supplier's warranty:

We offer you one-year warranty on the DVR in-vehicle recording equipment, if you have any warranties, please contact us for a satisfactory solution

Note:

All qualified return / exchange must be conducted by us, we do not need to accept your return without prior notice

Service

1. Well-trained team of sales and strong engineers for quick and professional support.

2. OEM / ODM service

Certification

Exhibition



CUSTOMER SATISFACTION

- Excellent Aftersale service
- 12 months warranty
- 24 hours customer service
- We understand the importance of our customers

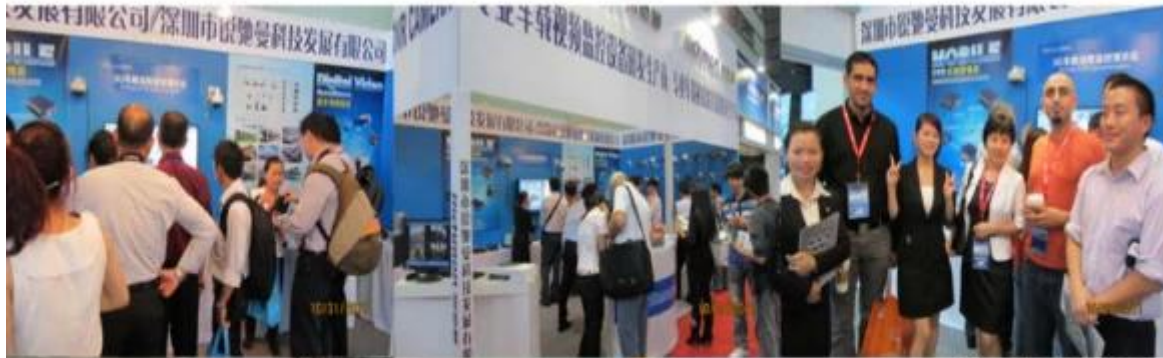
About us & Customers:



Skype: rcmcctvsales2

Richmor

CPSE2012 in Shenzhen



CPSE2013

10.29-10.31

4 Booth we have

Welcome you !!!



CPSE2012-- Guangdong TV Report-Shenzhen Richmor



hd car dvd camera system





EXCELLENT SUPPORT

