

Mobile dvr support AHD camera and Analog camera D1 both , 4G mdvr for vehicle

---

## Product Description

---

### MAIN FEATURES

H.264 Compression, 8CH Real-time 720P/4ch 1080P High definition camera input.

2CH video output (1CH CVBS video, 1CH VGA output for optional.)

Exclusive pre-allocate File System protect data completeness, prevent SD Card fragment, ensure data stable and complete.

8-36V wide voltage with low power consumption.

Unique UPS Technology ensures the integrality of record when power failure occurs, even can for 8-10s.

HDD+SD Card Storage ( Support 2.5" HDD, max 128G SD Card) protect from Shock & Dust damage; support USB port data backup and device update;

Support 2 USB interfaces, data backup and device upgrade.

Support 8CH alarm input (1CH Analog + 7CH IO Alarm input), 2CH independent alarm output.

Support 1 CH CAN port.

Support HDD heating functions, can work in harsh environment.

Support GPS/BD/G-Sensor Extension modules;

Realize real time monitor through 3G/4G;

Support WIFI module, can download data automatically.

Support Broadcast/Intercom/Text sent etc; can add oil sensor/temperature sensor/POS/LED Advertisement Panel;

Supporting the ministry of communications agreement. Support SMS remote configure/ control device;

OTA(On-The-Air) Device automatically upgrade function, can upgrade to updated version, maintenance is more convenient.

Support voice call function.

Support IOS/Android Phone Remote monitor

High level aviation interface, easily installation and better shockproof, more stable;

---

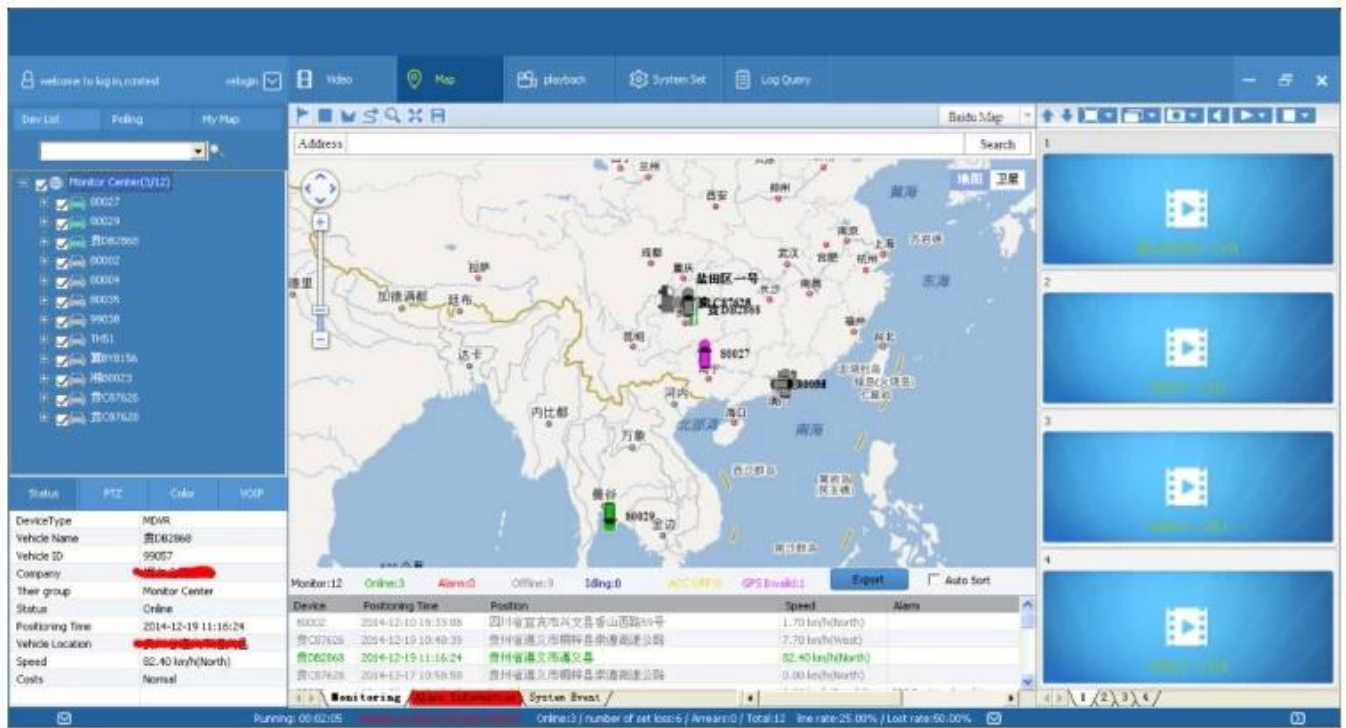
Item		Parameter
OS		Linux
Language		Chinese/English/Others (can be customized)
Video Compression		H.264 Compression Mode
OSD		Overlays information such as date time and vehicle ID
GUI	Graphical User Interface	Can connect to external LED screen. Setup system parameters with the remote control.
Video Record System	Video Input	4CH 1080p or 8ch 720p input ,aviation connector.
	Video Output	1CH CVBS+ VGA output for optional, 1.0Vp-p, 75 Ω
	Preview	Support 1 channel, 4 channels,9channels preview.,Support Manual/Alarm Trigger full screen preview
	Resolution	1080p/720p/D1/HD1/CIF, MAX:4 channels 1080p or 8 channels 720p
	Video Quality	0-7 levels, 0 is the highest level, 7 is the lowest level.
	Video Standard	CIF: 256Kbps ~ 1.5Mbps, <u>multi levels video quality optional</u> HD1: 600Kbps ~ 2.5Mbps, <u>multi levels video quality optional</u> D1: 800Kbps ~ 3Mbps, <u>multi levels video quality optional</u> 720P:4Mbps-6Mbps, <u>multi levels video quality optional</u> 1080P:4Mbps-8Mbps, <u>multi levels video quality optional</u>
	Record Mode	The default setting is auto recording after power on. Timed recording, alarm trigger recording and manual recording are supported.
Audio	Audio Input	4CH
	Audio Output	1CH
	Compression	G.711 compression, 8KB/s speed
Alarm Input		7CH IO Alarm Input+1ch AD input; Support alarm linkage function

Voltage & Power Consumption	Power Management	Adaptive wide power input, support Wide Voltage, Over-load、Over-voltage、 Short Circuit、Reverse Protection..Support Time Setting/Delay power off
	Voltage Input	DC:+8V ~ +36V
	Voltage Output	+12V@2.5A, +5V@2.5A
	Power-off Protection	UPS Technology,All video information can be saved automatically when the power is cut off, and make sure that all the files can not be damaged.
	Power Consumption	Normal Working <5W
Working Environment	Temperature	-20℃ to +70℃
	Humidity	20% to 80%
others	Size	187 (D) * 188 (W) * 67 (H) mm
	Net Weight	1.8kg

## RMSV6 INTERFACE

Easily Smart GUI Interface, saving time in device setting.





## Customer Feedback

---



**David from USA.**

This supplier has good softwares ability and can meet my needs. The sample works very good. I am hoping to order more.

**Tony from Russia.**

The cooperation is satisfied. The products are good. Very strong housing case. My clients like a lot.



**Jose from Columbia.**

We made correct decision in choosing this supplier. We are now having much better management and control on our vehicles. The ticket cash are more each day.



## Detailed Images

---



Shanghai LIT Composite Testing Laboratory Ltd.  
11, Wujiaochang Industrial Park, Hongqiao Road, Shanghai West, Shanghai District, Shanghai  
Shanghai, China  
Tel: +8621 54251100 Fax: +8621 54251100  
http://www.lit-test.com.cn E-mail: yu@lit-test.com.cn

Shanghai LCB Composite Testing Laboratory Ltd.  
17, Kangqiang Industrial Park, Songtao Road, Songtao West, Baoshan District, Shanghai  
Guangdong China  
Tel: +86(755) 8399-1130 Fax: +86(755) 8399-1132  
http://www.lcb-test.com/ Email: sales@lcb-test.com

Shenchen ICD Technology Testing Laboratory Ltd  
17, Jingyuan Industrial Park, Tongde Road, Nanhai Dist., Shaoan District, Shenzhen  
Guangdong, China  
Tel: 0755-26661111 Fax: 0755-26661111  
http://www.icd.com.cn Email: sales@icd.com.cn

Shanghai Jiao Tong University Testing Laboratory Ltd.  
37, Jingqiao Industrial Park, Jingqiao Road, Baocun Street, Shanghai District, Shanghai  
Shanghai, China  
Tel: 8621-54251100 Fax: 8621-54251102  
E-mail: jtdl@sjtu.edu.cn  
http://www.jtdl.com.cn

Shenzhen CTS Compliance Testing Laboratory Ltd.  
17, Anping Road, Industrial Park, Longda Road, Xixiang Street, Bao'an District, Shenzhen  
Guangdong, China  
Tel: 86-755-8329-1122 Fax: 86-755-8329-1122  
E-mail: [cts@cts-lab.com](mailto:cts@cts-lab.com) [www.cts-lab.com](http://www.cts-lab.com)

Shenzhen LIT (Shenzhen) Testing Laboratory Ltd  
17, Nanshan Industrial Park, Tongda Road, Nanshan West, Nanshan District, Shenzhen  
Guangdong, China  
Tel: 86(0)755 81691611 Fax: 86(0)755 81691612  
E-mail: [szl@szl.com.cn](mailto:szl@szl.com.cn) Web: [www.szl.com.cn](http://www.szl.com.cn)

## FAQ

**Q:Are you factory manufacturer or trade company?**

We are factory manufacturer,we have our own factory and technology/skill support,we have engineers to support/take charge of R&D ,resolve problems product.

**Q: Does the MDVR support Hard drive and SD card?**

Yes, HDD version MDVR supports SSD, HDD, and SD card. SD card version MDVR supports max 2 SD card.The storage capacity can be from 32GB to 2TB.

**Q: Is it difficult to install MDVR into the vehicle?**

**Actually it is easy to install it into vehicle. Most driver can figure out how to connect the power cables.**And the camera installation is more easy. Just screw, connect and mount on the target place inside the vehicle.

**Q: If I need door open and close alarm, overspeed alarm, reverse video, brake video, left-turn video, right-turn video, etc,is it available?**

Definitely yes!The I/O RS232 and 485 extension port is for all expanded purposes, including the functions above.In fact, there are more customized functions which can be connect through this port, such as Fuel sensor, Counter system,PTZ camera, and so on.

**Q: We have our own platform and server, can we use your MDVR? Do you have SDK or can you do customized platform for us?**

Yes, we have SDK ready and welcome your OEM customized order!

**Q: We have our own platform and server, can we use your MDVR? Do you have SDK or can you do customized platform for us?**

Yes, we have SDK ready and welcome your OEM customized order!

**Q: Does the MDVR come with accessory, such as HDD, SD card, Microphone, Camera, Extension cable etc?**

We have all accessories ready. You can ask us to make the complete quote for one whole set. Normally the MDVR doesn't include any accessory. Therefore it is advisable to inform us about your target accessory. All are can done right here. One-stop-serve purchasing.

**Q: Can I get a sample to test before formal order?**

Yes, you can. We can provide sample with 1 month test period. It will demand some deposit and the delivery (both send and resend) cost is supposed to be on your own side. If the deliver cost is not so high, we recommend this way. If not, then we do not recommend you do this. Do not forget the import tax as well.

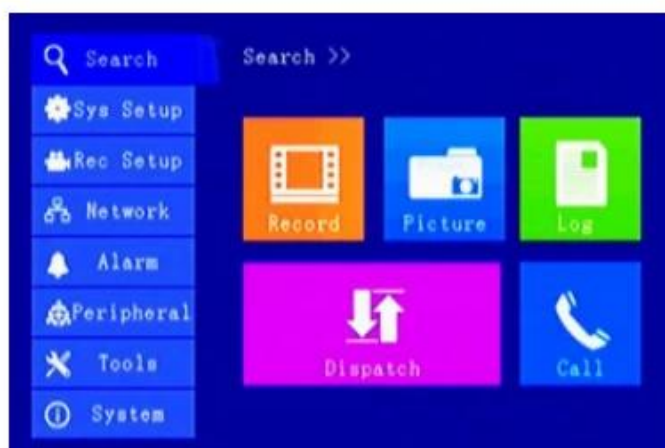
**Q: How many camera in one set? Can I use my own accessory?**

A: The accessory depends on you. The normal quotation is based on MDVR only. The accessory would not be quoted until you ask for them. And it is OK to use your own accessory. It is compatible.

**Q: What can I do if the MDVR fails to work?**

A: You can send it back to us. Remember that we provide 12 months quality warranty under normal use. If you send it back, we will inspect the MDVR in details and repair it for you. However we seldom have returned defective MDVR. The quality is rather good!

**Easily Smart WIN8 Interface, saving time in device setting.**



Pls feel free to contact **Amily** directly for your vehicle projects~~

**MB/Whatsapp: +86 18929314790**