

Mobile Digital Video Recorder mini 4ch gps vehicle mobile dvr

(RCM-MDR210 Series)

Product features

Remote Viewing Surveillance 3G 4G Mobile DVR

1. H.264 Compression Mode, support 4CH real-time 720P Mega Pixel AHD input and Analog Standard Definition camera input;
2. Exclusive pre-allocate DVR Special File System Technology, solving repeatedly wipe cause file fragmentation, solving SD Card file system collapse, data loss and cannot find SD CARD and file garbled, ensure the integrity of the data.
3. 10-36V Adaptive Wide Voltage input, Super low Power Consumption Design;
4. SD card storage (2SD cards, Each maximum support 128GB) It can be completely resist car Vibration. Dust and others cause data corruption;
5. Support GPS/BD/G-Sensor; High Reliability Aviation Connectors.
6. High Cost Performance with reliable stability, simple and clear operation menu.

| RCM-MDR 210 Series | |
|--------------------|---|
| Model NO. | Function |
| RCM-MDR210XXXI | Basic Recording,G-Sensor, Single SD card slot |
| RCM-MDR210GXGX | GPS, G-Sensor, Single SD card slot |
| RCM-MDR210WGSX | 3G, GPS, G-Sensor, Dual SD card slot |
| RCM-MDR210FGSX | 3G, 4G, GPS, G-Sensor, Dual SD card slot |
| RCM-MDR210WGDY | 3G, WIFI, GPS, G-Sensor, Dual SD card slot |
| RCM-MDR210FGDY | 3G, 4G, WIFI, GPS, G-Sensor,Dual SD card slot |

Detail pictures

Remote Viewing Surveillance 3G 4G wifi Mobile DVR



Device back view

Remote Viewing Surveillance 3G 4G wifi Mobile DVR



Device front view

Romote Viewing Surveillance 3G 4G wifi Mobile DVR

LED Indicators



Romote Viewing Surveillance 3G 4G wifi Mobile DVR

Back Panel



RCM-MDR210 Parameter Sheet

| Item | | Parameter |
|-------------------|--------------------------|---|
| OS | | Linux |
| Language | | Chinese/English/Customized |
| Video Compression | | H.264 |
| OSD | | Overlays information such as date time and vehicle ID |
| GUI | Graphical User Interface | Setup system parameters with the remote control. |

| | | |
|-------------------------|-------------------|---|
| Video Record System | Video Input | 4CH 720P AHD input/SD input/mixed video input, aviation connector, 1.0Vp-p, 75Ω |
| | Video Output | 1CH CVBS+1CH VGA output, 1.0Vp-p, 75Ω,Aviation,Support 1CH Full Screen,4CH Screen |
| | Preview | Support 1 channel and 4 channels preview. Support Manual/Alarm Trigger full screen preview |
| | Resolution | 720P/D1/HD1/CIF, MAX:4 channels 720P |
| | Video Quality | 0-7 levels, 0 is the highest level. |
| | Video Standard | PAL: 100f/s , CCIR625 line,50field; NTSC: 120f/s, CCIR525 line,60field; CIF: 256Kbps ~ 1.5Mbps, 8 level video quality optional; HD1: 600Kbps ~ 2.5Mbps, 8 level video quality optional; D1: 800Kbps ~ 3Mbps, 8 level video quality optional; 720P: 4Mbps-6Mbps, multi level video quality optional |
| | Record Mode | The default setting is auto recording after power on. Timed recording, alarm trigger recording and manual recording are supported. |
| Audio | Audio Input | 4CH ,Aviation Plug |
| | Audio Output | 1CH,Aviation Plug |
| | Compression | G.726 compression, 8KB/s speed |
| Alarm Input | | 4Ch Alarm Input, kinds of alarm linkage support |
| Alarm Output | | 1CH Alarm Output |
| Communication interface | | 1CH RS232 or 1CH RS485 for optional |
| Position | | Support Built GPS/BD Module, built in G-sensor, can replay and analyse vehicle driven route. |
| wireless transmission | | Support Built-in 3G/4G wireless transmission function, WCDMA, CDMA2000, TDD-LTE, FDD-LTE.... |
| Motion Detection | | Support motion detection alarm. (Can set the video recording duration time after alarm on platform.) |
| G-Sensor | | Support G-sensor |
| Storage | SD | Dual SD Card,each max 128GB SD Card loop recording |
| | Upgrade | Support SD Card remote updating |
| | File Format | H.264 |
| | File System | Special FAT32 File System |
| Video Playback | Video Search | Search By Record Time/Record Type etc |
| | Playback | Max support 4CH Replay /Stop/Fast/Slow at same time |
| | | Support forward and backward play at the speed of: x 2,x4,x8,x16. |
| Voltage & Power | Power Management | Wide Voltage.Support Timed/Delay off |
| | Voltage Input | DC:+8V ~ +36V |
| | Power Consumption | Normal Working □14W , Stand-by status < 0.5W |
| | Temperature | -20℃ to +70℃ |
| Working Environment | Humidity | 20% to 80% |
| | Password | User/Admin 2 Level Different Password |
| Security | Size | 112(W) x36(H) x138(D) mm |
| others | Net Weight | 360g |

Product Configuration:

1. Standard configuration

Device host 1pcs;

Power Cables 1pcs;

I/O Cables 1pcs;

AV Cables 1pcs;

Remote control 1pcs;

3G/4G Antenna 1pcs;

GPS Antenna 1pcs;

CD(User manual) 1pcs;

2. Optional configuration:

camera

LCD display

SD card

fuel sensor

passenger counter function camera

SMS alert device etc

Richmor surveillance GUI

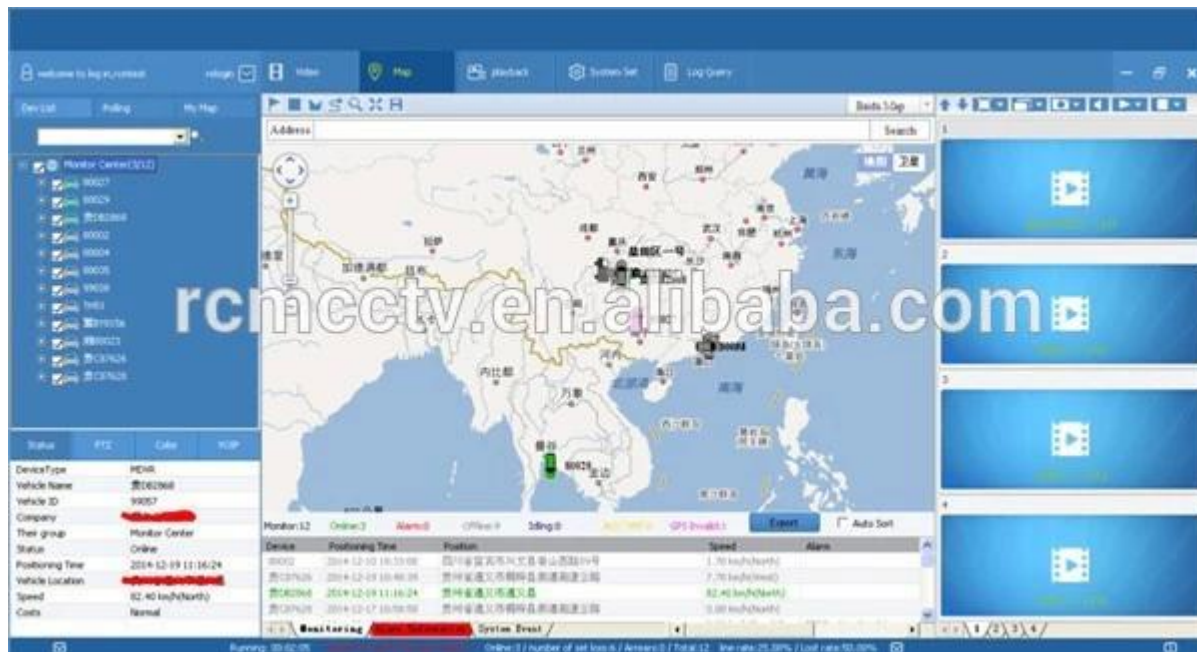
The main menu includes: Search, System setup, Rec setup, Network setup, Alarm setup, Peripheral setup, System Tools, System Information, as below:



Richmor Mobile DVR Mileage Summary

| Vehicle Management System | | | | | | | | | |
|--|---------|-------------------|---------------------|-------------------|-----------------------|---------------------|-----------------|--|--|
| Welcome! 销售经理 Manager Exit | | | | | | | | | |
| Report Device User | | | | | | | | | |
| <div> </div> <div> <div>Mileage Summary</div> <div> Begin Time: 2016-01-08 00:00:00 To: 2016-01-08 16:27:09 </div> <div> Device: All Devices Select Device Query Export To Excel Export To CSV Export To PDF </div> </div> | | | | | | | | | |
| <div> <div>Report</div> <div> <div>Quick Report</div> <div>Mileage Summary</div> <div>Mileage Daily</div> <div>Track Detail</div> <div>Speed Report</div> <div>Online Summary</div> <div>ID Alarm Report</div> <div>Alarm Report</div> <div>Storage Report</div> <div>Upgrade Report</div> <div>Fuel Report</div> <div>Park Report</div> <div>Geo Fencing Report</div> <div>3G Flow Report</div> <div>Extend Report</div> <div>Dispatch Report</div> </div> </div> | | | | | | | | | |
| Mileage Summary | | | | | | | | | |
| Index | Vehicle | Total Mileage(KM) | Begin Time | Start Mileage(KM) | Start Position | End Time | End Mileage(KM) | | |
| 1 | 粤B3114 | 174.88 | 2016-01-08 08:00:30 | 22.95 | 22.524294, 114.008444 | 2016-01-08 16:25:41 | 157.83 | | |
| 2 | 粤B3130 | 202.07 | 2016-01-08 07:30:17 | 16.1 | 22.664296, 112.882802 | 2016-01-08 16:25:28 | 171.57 | | |
| 3 | 24012 | 277.42 | 2016-01-08 07:09:55 | 23.41 | 23.369582, 116.673227 | 2016-01-08 14:57:24 | 300.03 | | |
| 4 | 粤A78248 | 97.4 | 2016-01-08 00:00:25 | 236.97 | 41.572492, 116.788245 | 2016-01-08 08:42:36 | 41.09 | | |
| 5 | 24023 | 0 | 2016-01-08 00:00:07 | 16.26 | 37.158759, 120.731127 | 2016-01-08 16:19:07 | 16.26 | | |
| 6 | 粤QW5387 | 416.36 | 2016-01-08 08:09:54 | 96.88 | 35.461432, 117.843783 | 2016-01-08 16:28:11 | 92.83 | | |
| 7 | 粤B81712 | 120.98 | 2016-01-08 04:48:43 | 26.51 | 36.876478, 117.681941 | 2016-01-08 14:25:07 | 144.92 | | |
| 8 | 粤B82250 | 45.81 | 2016-01-08 00:00:03 | 138.13 | 22.654294, 112.488263 | 2016-01-08 16:15:15 | 115.82 | | |
| 9 | 粤B6153 | 48.64 | 2016-01-08 00:00:27 | 82 | 22.654187, 112.487565 | 2016-01-08 16:11:28 | 73.72 | | |
| 10 | 粤B8268 | 111.72 | 2016-01-08 00:00:15 | 145.61 | 22.654321, 112.488645 | 2016-01-08 16:24:48 | 93.9 | | |
| 11 | 粤B6010 | 52.02 | 2016-01-08 00:00:10 | 83.24 | 22.654294, 112.487785 | 2016-01-08 16:15:55 | 57.82 | | |
| 12 | 粤AA3083 | 895.08 | 2016-01-08 00:00:29 | 354.36 | 36.950843, 117.858781 | 2016-01-08 16:24:44 | 1009.74 | | |
| 13 | 24058 | 224.42 | 2016-01-08 07:00:58 | 44.57 | 37.949788, 116.844070 | 2016-01-08 16:17:34 | 60.4 | | |
| 14 | 28999 | 2.36 | 2016-01-08 13:13:08 | 17.6 | 28.734423, 121.338847 | 2016-01-08 13:57:27 | 19.81 | | |
| 15 | 00588 | 369.29 | 2016-01-08 00:00:54 | 51.84 | 33.733305, 115.868821 | 2016-01-08 16:00:58 | 420.33 | | |

Player software interface



Remote Viewing Surveillance 3G 4G Mobile DVR Taxi solution

出租车监控解决方案

TAXI SOLUTION



功能特点 Features



实时监控, GPS定位
Real-time Video,
GPS positioning

运营管理
Fleet Management



采用高压压缩, 图像清晰的H.264编码格式, 支持开机录像、定时录像及报警录像, 支持ACC熄火延时录像。内置GPS全球定位系统, 可通过3G网络远程查看实时视频, 车辆位置, 回放历史录像。支持手机远程监控, Adopt H.264 Video Compression, support Auto Recording, Timed Recording, Alarm Recording, also ACC Power on/off Recording. Built-in GPS System, can view the real time video and Vehicle Position, replay Historical Video through 3G, Mobile Phone real time view supported.

具有线路调度, 运营监控管理功能; 可通过可视化调度指挥、语音广播、双向对讲、语音通话、文字短信等信息交互, 及时处理各种事件, 比如塞车、车辆故障、交通事故等。

With Line Scheduling and operation management function, can handle all kinds of emergency thing such as heavy traffic, Vehicle Breakdown, traffic accident through Real time video, Broadcast, Intercom talk back function etc.



出租车 监控解 决方案



紧急报警 Emergency Alarm

遇到抢劫等突发事件时, 驾驶员可隐蔽地触发紧急报警按钮, 管理中心会立即发出警报声, 自动弹出现场视频, 启动录像, 工作人员可根据现场情况及时应对处理。

Taxi Driver can click the Emergency Button concealed when meet rob, a small window will show with sound alarm in center office and start recording, the office man can handle it according the video condition



历史轨迹查询
GPS Position and Path Track

车辆行驶的历史轨迹记录, 监控管理中心可以在电子地图上远程回放, 重现车辆的行驶过程。

A blue mark in the map show the vehicle driving route automatically and continuous, refresh the Vehicle latest Position. Remote replay the vehicle driving route in map at center office.



广告发布 Advertising

控制和下发LED显示屏的显示信息, 包括各种商业广告信息、公益信息、政府的方针政策、交通信息、天气预报等各种信息。

Control and send the information including: Commercial information, public information, government policies and regulations, traffic information, weather forecast etc to LED Screen, fast reaction convenient for information advertise and control.



乘客状态显示
Passenger status display

不用开启视频监控, 运营管理中心也可实时显示出租车辆的载客状态, 便于统一调度管理, 高效利用资源。

Without Real time Video, the office man can also know the Taxi Passenger condition, convenient for Taxi fleet management saving the resource, more efficient.

Richmor actual case



Application

Widely used in passenger car,bus,taxi,school bus,lorry,dangerous vehicle, personal car and ship etc.



Travelling Bus



Public Bus



Dangerous chemical car



Tobacco Logistics



Taxi



Truck



School Bus



Express Logistics



Road Police Car



Border Car



Traffic Inspection Car



Civil Work Vehicle



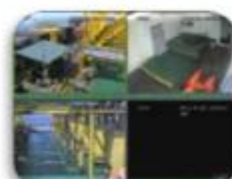
Escort Vehicle



Ambulance



Fixed place monitor



Ship Monitor

Buying Guides

Packaging

1 unit with all standard accessories such as AV Cables/IO Cable/Power Cable/Key etc

Neutral paper box or Color paper box with Logo Richmor printed,also welcome customized package.



Richmor Brand Package



Standard Package

Cooperation Terms

Shipping Info

Estimated Shipping Time

- a. 3-5 working days after payment cleared for sample order.
- b. 5-10 working days after payment cleared depends on order quantity for bulk order.

Remarks:

- 1. Order will be dispatched before next 2 working day after full payment is done, 48 hours aging time;

2.Related documents will be sent after order is dispatched,please check mail;

3.All parcels will be shipped by DHL/TNT/UPS/EMS/FedEx/Air etc according your option;

Payment Info

1.T/T;Western Union;Paypal optional;

2.30% deposit,balance be paid before delivery

Remarks:

Please sent bank slip when payment done,according this we will arrange the production

Warranty Info

Free Replacement:

Mobile DVR Recorder can replace free under conditions within 15 days after sale,in the precondition of our quality problem,non-artificial damage

Supplier Warranty:

We offer ONE YEAR warranty on Vehicle Mobile DVR Recorder,if your item has any warranty issue please contact us for a satisfying solution

Remark:

All qualified returns/replacement must be guided by us,we may not accept your return without informing us in advance

Service

1. Well Trained Sales Team and strong engineers for fast and professional support.
2. OEM/ODM Service



CUSTOMER SATISFACTION

- Excellent Aftersale service
- 12 months warranty
- 24 hours customer service
- We understand the importance of our customers

Certifications



Exhibition

Richmor

CPSE2012 in Shenzhen



CPSE2013

10.29-10.31

4 Booth we have

Welcome you !!!



CPSE2012-- Guangdong TV Report-Shenzhen Richmor



About us & Customers:





EXCELLENT SUPPORT



What is our expectation

Being your helpful and long term partner meeting your requirement.

Any question about your vehicle project, contact our representative Vicky.

Mob/Whatsapp: +86 18929318475 Skype: rcmcctvsales7