

We also offer many kinds of products for your choice. Please click these words and find your need

[4G 1080P SD CARD MOBILE DVR on sale](#), [Hd 720p 1080p H.264 Mobile Dvr](#), [RS485 RS232 Public bus mobile dvr](#)

Parameter

Video channels	4 channels (2 built cameras,support 2 external input,2 output)
Video Compression	H.264 Compression Mode
Network	3G/4G module & WIFI optional
Position	Support Built GPS/BD Module
G-Sensor	Support G-sensor
system	Linux
Voltage	6~36V
Storage	Two SD Card (Each SD support 128GB max.)
USB	Build-in Mini USB
TTS Voice Broadcast	support
Video Output	1 channels
Alarm output	1 ch(One RS232 port and One RS485 port)

Product description

Integrated microphone (inside car audio record)

Integrated speaker (audio broadcast and early warning)

Host device carry 6 status indication light (survey equipment work status)

Host device integrated one alarm button,one on-off button and one WIFI toggle button(AP and station mode by hand)

Built-in Bluetooth module(support wireless alarming and capture by wireless Bluetooth button and achieved headset intercom and telephone function)

Built-in WIFI(achieved automatic uploading and smart phone connection function.the AP function achieved 5 external device share internet)

Built-in GPS Module and antenna (achieved management of car speed and route)

Support alarming function for the departure of the routes and entrance and the exit of an area.equipment support 16 route and area.

Integrated 3G/4G Module(achieve remote audio and video transmission and management)

Built-in G-Sensor Module (achieved automatic alarming upload about abnormal vibration,overturning ,impact and emergency brake)

Built-in one video output(achieved video preview and rear preview function via connection of the monitor)

Built-in super-capacitor (work time about 8 to 11 seconds under the condition of abnormal outage for the core data without loss and the hard disk without damage)

Support two SD Card (each SD support 128GB max)

Detail pictures

Modular Split Mini Camera DVR -----BK6



FOCUS ON MDVR SYSTEM BUILDING GLOBAL BRANDS





Front Panel



Rear Camera

360° 3V Rotating

Side View

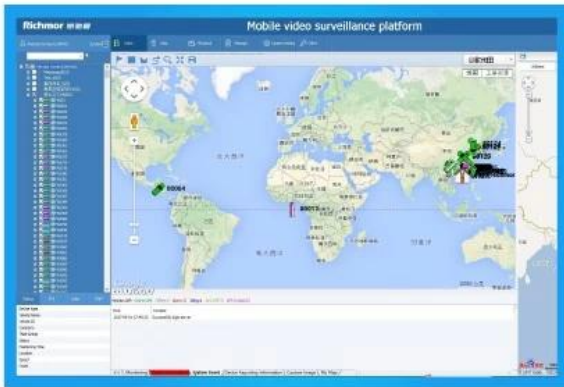
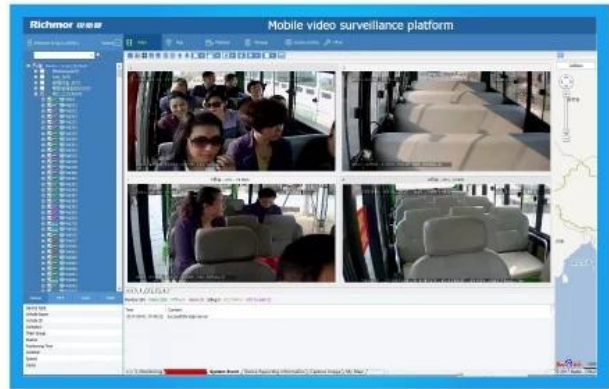


Back Panel

Stick upon
window glass



Front Camera
120° Rotating



Package content

1 Piece mobile DVR, per box with all standard accessories

RCM-MDR210 Parameter Sheet

Item	Parameter
OS	Linux
Language	Chinese/English/Customized
Video Compression	H.264

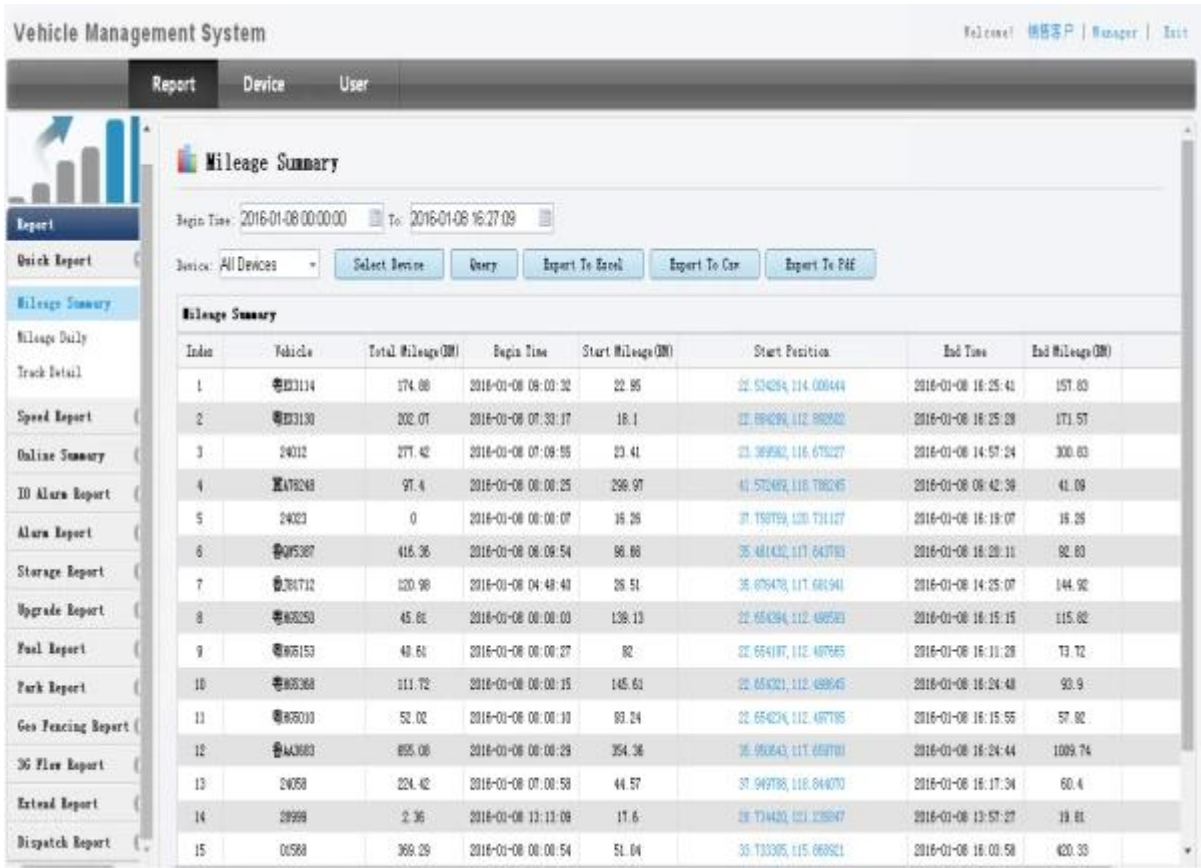
OSD		Overlays information such as date time and vehicle ID
GUI	Graphical User Interface	Setup system parameters with the remote control.
Video Record System	Video Input	4CH 720P AHD input/SD input/mixed video input, aviation connector, 1.0Vp-p, 75Ω
	Video Output	1CH CVBS+1CH VGA output, 1.0Vp-p, 75Ω,Aviation,Support 1CH Full Screen,4CH Screen
	Preview	Support 1 channel and 4 channels preview. Support Manual/Alarm Trigger full screen preview
	Resolution	720P/D1/HD1/CIF, MAX:4 channels 720P
	Video Quality	0-7 levels, 0 is the highest level.
	Video Standard	PAL: 100f/s , CCIR625 line,50field; NTSC: 120f/s, CCIR525 line,60field; CIF: 256Kbps ~ 1.5Mbps, 8 level video quality optional; HD1: 600Kbps ~ 2.5Mbps, 8 level video quality optional; D1: 800Kbps ~ 3Mbps, 8 level video quality optional; 720P: 4Mbps-6Mbps, multi level video quality optional
	Record Mode	The default setting is auto recording after power on. Timed recording, alarm trigger recording and manual recording are supported.
Audio	Audio Input	4CH ,Aviation Plug
	Audio Output	1CH,Aviation Plug
	Compression	G.726 compression, 8KB/s speed
Alarm Input		4Ch Alarm Input, kinds of alarm linkage support
Alarm Output		1CH Alarm Output
Communication interface		1CH RS232 or 1CH RS485 for optional
Position		Support Built GPS/BD Module, built in G-sensor, can replay and analyse vehicle driven route.
wireless transmission		Support Built-in 3G/4G wireless transmission function, WCDMA, CDMA2000, TDD-LTE, FDD-LTE....
Motion Detection		Support motion detection alarm. (Can set the video recording duration time after alarm on platform.)
G-Sensor		Support G-sensor
Storage	SD	Dual SD Card,each max 128GB SD Card loop recording
	Upgrade	Support SD Card remote updating
	File Format	H.264
	File System	Special FAT32 File System
Video Playback	Video Search	Search By Record Time/Record Type etc
	Playback	Max support 4CH Replay /Stop/Fast/Slow at same time Support forward and backward play at the speed of: x 2,x4,x8,x16.
Voltage & Power	Power Management	Wide Voltage.Support Timed/Delay off
	Voltage Input	DC:+8V ~ +36V
	Power Consumption	Normal Working □14W , Stand-by status < 0.5W
	Temperature	-20°C to +70°C
Working Environment	Humidity	20% to 80%
	Password	User/Admin 2 Level Different Password
Security	Size	112(W) x36(H) x138(D) mm
others	Net Weight	360g

Richmor surveillance GUI

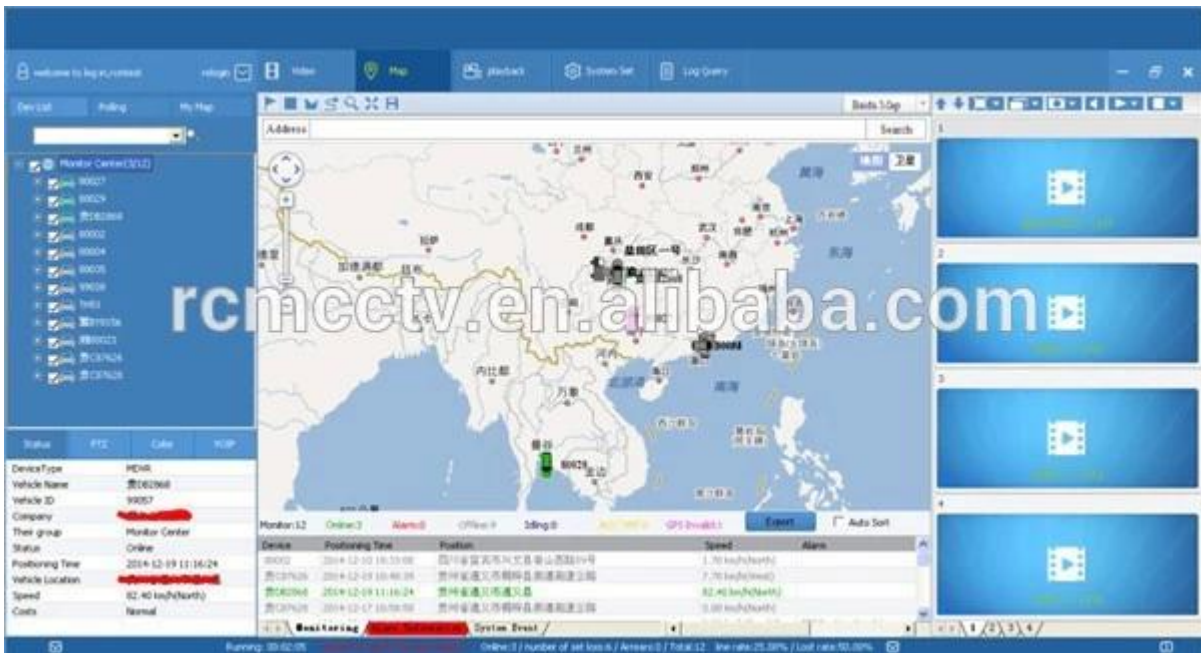
The main menu includes: Search, System setup, Rec setup, Network setup, Alarm setup, Peripheral setup, System Tools, System Information, as below:



Richmor Mobile DVR Mileage Summary



Player software interface



Richmor actual case



Application

Widely used in passenger car, bus, taxi, school bus, lorry, dangerous vehicle, personal car and ship etc.



Travelling Bus



Public Bus



Dangerous chemical car



Tobacco Logistics



Taxi



Truck



School Bus



Express Logistics



Road Police Car



Border Car



Traffic Inspection Car



Civil Work Vehicle



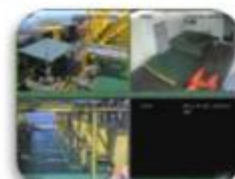
Escort Vehicle



Ambulance



Fixed place monitor



Ship Monitor

Buying Guides

Packaging

1 unit with all standard accessories such as AV Cables/IO Cable/Power Cable/Key etc

Neutral paper box or Color paper box with Logo Richmor printed,also welcome customized package.



Richmor Brand Package

Standard Package

Cooperation Terms

Shipping Info

Estimated Shipping Time

- a. 3-5 working days after payment cleared for sample order.
- b. 5-10 working days after payment cleared depends on order quantity for bulk order.

Remarks:

1.Order will be dispatched before next 2 working day after full payment is done,48 hours aging time;

2.Related documents will be sent after order is dispatched,please check mail;

3.All parcels will be shipped by DHL/TNT/UPS/EMS/FedEx/Air etc according your option;

Payment Info

1.T/T;Western Union;Paypal optional;

2.30% deposit,balance be paid before delivery

Remarks:

Please sent bank slip when payment done,according this we will arrange the production

Warranty Info

Free Replacement:

Mobile DVR Recorder can replace free under conditions within 15 days after sale,in the precondition of our quality problem,non-artificial damage

Supplier Warranty:

We offer ONE YEAR warranty on Vehicle Mobile DVR Recorder,if your item has any warranty issue please contact us for a satisfying solution

Remark:

All qualified returns/replacement must be guided by us,we may not accept your return without informing us in advance

Service

1. Well Trained Sales Team and strong engineers for fast and professional support.
2. OEM/ODM Service



CUSTOMER SATISFACTION

- Excellent Aftersale service
- 12 months warranty
- 24 hours customer service
- We understand the importance of our customers

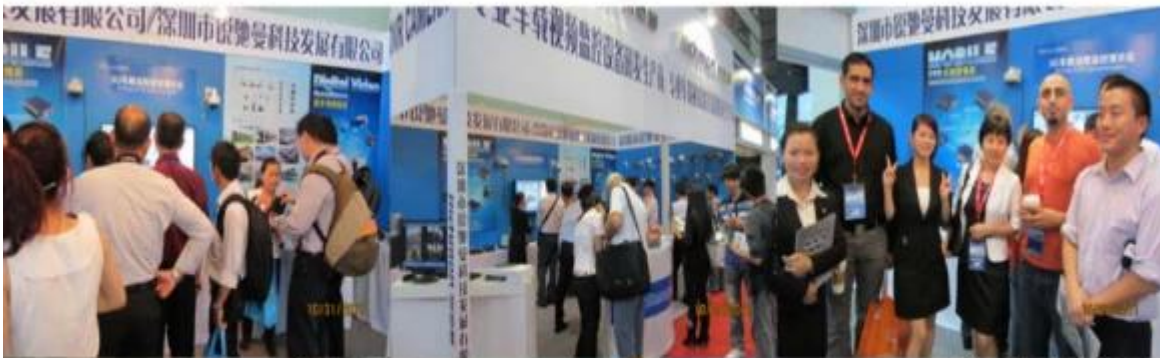
Certifications



Exhibition

Richmor

CPSE2012 in Shenzhen



CPSE2013

10.29-10.31

4 Booth we have

Welcome you !!!



CPSE2012-- Guangdong TV Report-Shenzhen Richmor



About us & Customers:





EXCELLENT SUPPORT



Skype: rcmcctvsales2