

Richmor 8 channel AI mobile DVR

8 channel full HD 1080P+ADAS+DSM+BSD

Product Description

Features:

- * Apply AI technology to Mobile DVR, high accuracy and self-learning ability;
- * Integrated BSD(blind spot detection)+ADAS(Advanced assisted driving system)+DSM(Dangerous behavior Management) for optional, prevents accidents effectively;
- * Driver face recognition;
- * Professional operation and maintenance APP, completely separated from the display. Can be configured and maintained via mobile phone
- * The algorithm supports remote upgrade combinations. The AI algorithm can be calibrated remotely to adjust the algorithm sensitivity! Update algorithms and face resources.
- *Support API/SDK integration

ADAS Front Active Safety Warning System

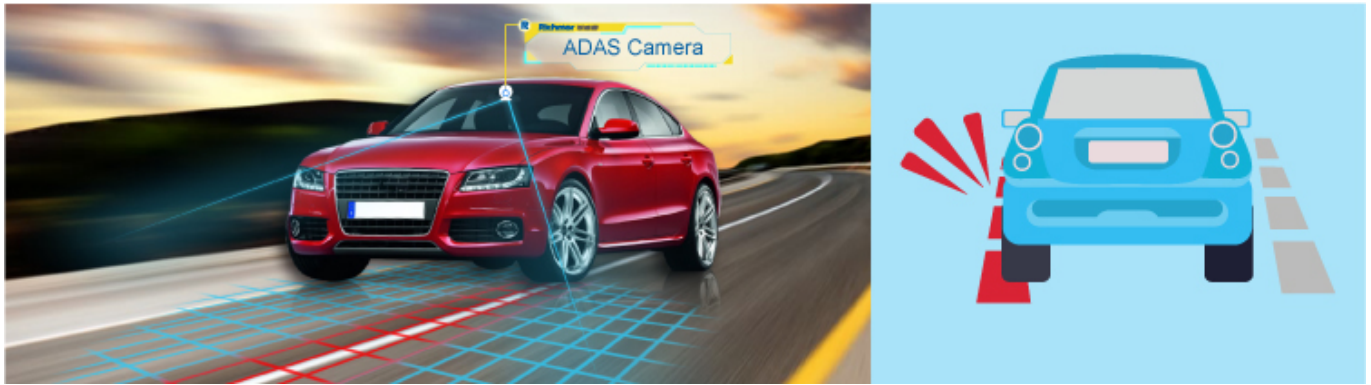
Front Vehicle Collision Warning System

When closely following the front vehicle, the front vehicle collision warning function will win precious reaction time for the driver, thus avoiding traffic accident.

Lane Departure Warning System

LDW(Lane Departure Warning). The position of the vehicle in the lane is monitored by the ADAS algorithm, and the driver is warned when the vehicle is above the line or is about to press the line, prevents traffic accident caused by lane departure.



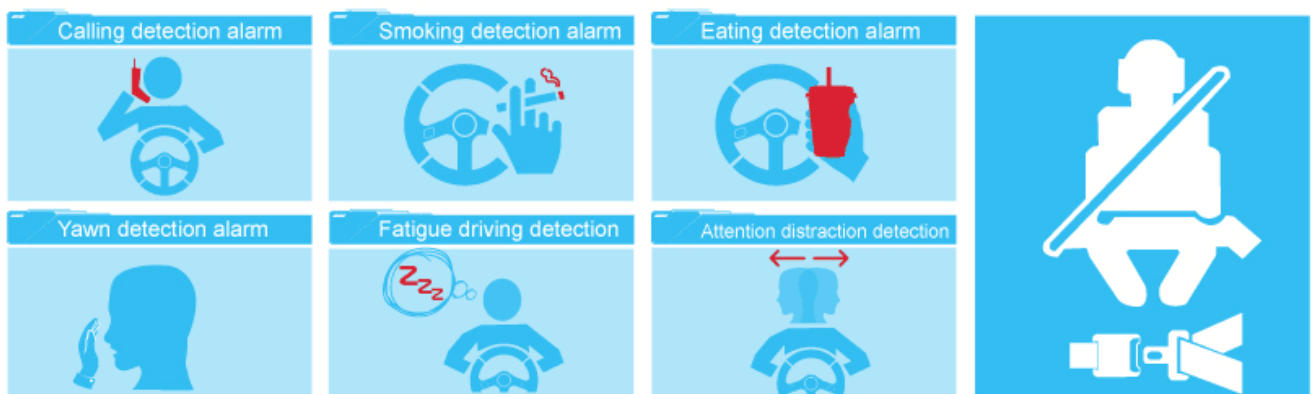


Fatigue driving detection

Use biostatistics to analyze. Prevent drivers from crossing guard posts and others using vehicles.

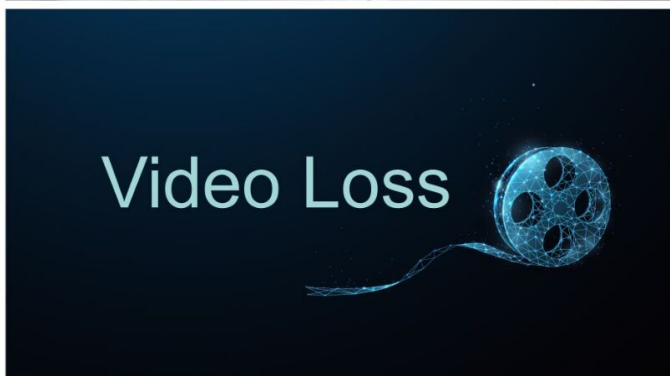
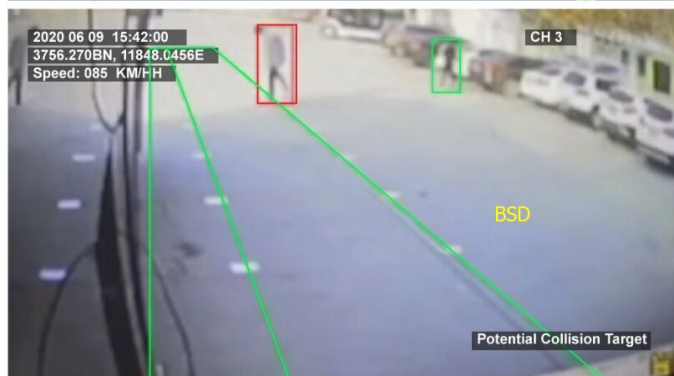
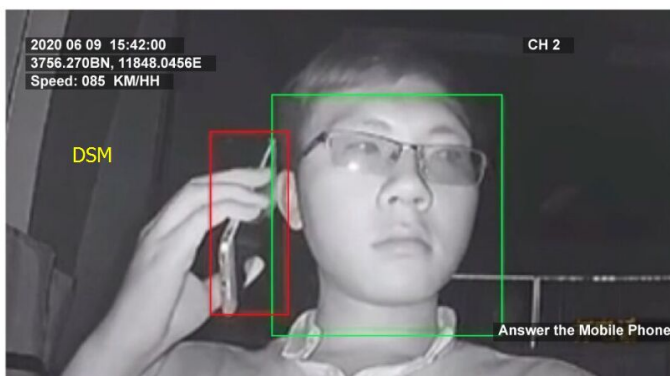
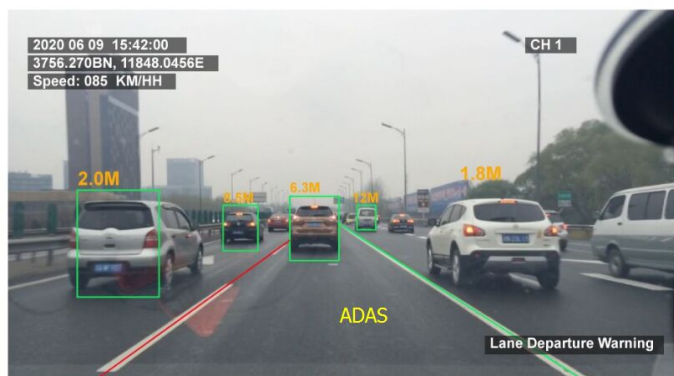
DSM Dangerous Driving Behavior Pre-warning System

Mainly detect unfavorable driving behaviors of the driver, such as driving distracted (looking around, smoking, making phone calls, yawning, etc) and over-speeding, bad driving behavior, etc. Once the system detecting the above behavior, there will be a sharp alarming to warn the driver to avoid accident.



BSD blind spot detection

Calculate and analyse the objects in the driving blind area. If it is person, motorcycle, bicycle, cars, it will give an alarm to those objects and the drivers to avoid collision. Compared with radar, it won't give alarm to tree or trash can, which highly improves the accuracy.



Product details

*8 channel 1080p video input, H.265 compression

item	value
------	-------

Operation system	Linux
CPU Speed	1.2GHZ
NOR FLASH CAPACITY	32MB NOR+128M NAND
RAM CAPACITY	1G
Resolution	1080P/960P/720P/D1/CIF
Compression mode	H.265, H.264
Video input	8 channels
Video output	CVBS or VGA
Communicate mode	3g/4g/wifi optional
Audio Input	8 channels
Audio output	3 channels
AI function	ADAS/DSM/BSD/face recognition optional
API/SDK integration	Yes
GPS	Yes
Warranty	12 months

Related Kits



Packing & Delivery



The packing can be the normal industry Packing or customized service.

Company Profile





Shenzhen Richmor Technology Development Co., Ltd. is a TOP high-tech enterprise/manufacturer specialized in digital and intelligent mobile video surveillance products, with rich experiences for developing, producing and selling over 10 years. (Mainly include 3G 4G SD card/HDD mobile DVRs, 3G 4G megapixels mobile NVRs, 4CH/5CH/8CH HDD mobile DVRs, ADAS DSM HDD mobile DVRs, 3G/4G portable DVR, HD vehicle camera, vehicle IP cameras, HD vehicle PTZ camera...etc. As a professional manufacturer, we concentrate ourselves on providing customers with most advanced technologies and products with highest quality.



Contact

Contact: Ada Lin

Email: sales03(at)richmor.net

Mob/Whatsapp/Wechat/Skype: + 86 18938073583

Website: <http://www.mdvrchina.com>

Company Add: 5th Floor, D Building, Bantian International Center, Bantian, Longgang District, Shenzhen, China.