

Full HD HDD 8CH 1080P DVR for Vehicle Security Video Surveillance

Main Features:

- 1.Integrate AI functions, such as ADAS(Front safety pre-warning system)+BSD(Blind Spot Security Detection)+DSM(Modify driver behavior system);
- 2.World's first one True AI Car Mobile DVR, has deep learning and analyzing ability,can optimize according to different complicated occasions.
- 3.New MDVR interface, support Mouse operation and remote control,easy to be made maintanance;
- 4.Hard disk or SD card storahe for optional.
5. Easy cost-effective Configuration via Mobile App, remote controller, or server platform remotely. And Silky intuitive and extraordinary OS system interface,
6. Gorgeous and powerful client program, providing real-time monitoring, monitoring intercom, playback, video recording, HD screenshot etc.

Richmor

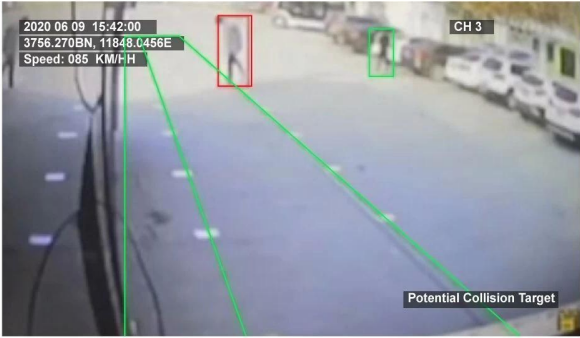
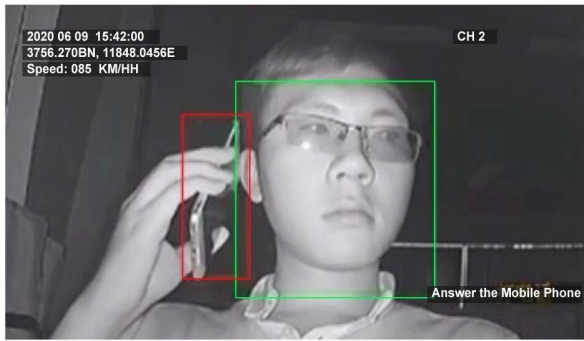
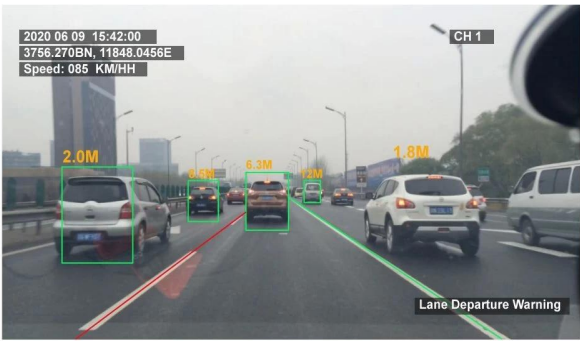


Functions

ADAS / ADAS Front Active Safety Warning System



DSM / Dangerous Driving Behavior Pre-warning System



Parameters

Item		Parameters
OS		Linux
Processor speed		ARM7 800MHZ
NOR FLASH storage		32MB
RAM storage		512MB
Video	Input	8CH AHD, aviation, 1.0Vp-p, 75Ω
	Video output	2CH video output, 1.0Vp-p, 75Ω, Support single screen /2/4/5/6/8/9
	Preview	Support single screen /2/4/5/6/8/9, support manual /event trigger full screen
	Resolution	1080P、720P、D1、HD1、CIF, Max support 4CH 1080P.
	Image quality	Level 0-7 optional , highest 0 , lowest 7
	Video bite rate	CIF: 256Kbps ~ 800Kbps, D1: 400Kbps ~ 1Mbps, Image quality optional 720P:640Kbps-2Mbps, Image quality optional 1080P:800Kbps-4Mbps, Image quality optional
	Recording method	Default automatic recording, support ignition recording, manually recording, alarm recording ect
Video output	Analogue output	1CH front analogue output
		1CH back analogue output
Audio input	Channel	5
	AGC control	Auto
	Sampling frequency	8/16K
	Sample precision	16

Platform

Mobile Monitoring Management Platform

RMVS is a system of centralized management and monitoring of all kinds of vehicles based on wireless network. Perform real-time monitoring, GPS/BD positioning, video storage, vehicle scheduling, alarm and alarm, etc.



FAQ

1. What is ADAS?

ADAS Front Active Safety Warning System:

Front Vehicle Collision Warning System

When closely following the front vehicle, the front vehicle collision warning function will win precious reaction time for the driver, thus avoiding traffic accident.

Lane Departure Warning System

LDW(Lane Departure Warning). The position of the vehicle in the lane is monitored by the ADAS algorithm, and the driver is warned

when the vehicle is above the line or is about to press the line, prevents traffic accident caused by lane departure.

Fatigue driving detection

Use biostatistics to analyze.

Prevent drivers from crossing guard posts and others using vehicles.

2. What is DSM?

DSM Dangerous Driving Behavior Pre-warning System

Mainly detect unfavorable driving behaviors of the driver, such as driving distracted (looking around, smoking, making phone calls, yawning, etc) and over-speeding, bad driving behavior, etc. Once the system detecting the above behavior, there will be a sharp alarming to warn the driver to avoid accident.

3. What is BSD ?

BSD Blind Spot pre-warning System

Use BSD algorithms to analyze the driving scene, have Acousto-optic alarm to warn the driver for paying attention to the people and motor -vehicles, thus avoid the traffic accidents which caused by driver's blind area.