

For police car dvr gps tracking system 4ch 3g 4g mdvr 3g sim card hdd mobile dvr

(RCM-MDR 7104 Series)

Remote Viewing Surveillance 3G 4G Mobile DVR Police car solution





功能特点 Features



Product features

Romote Viewing Surveillance 3G 4G GPS WIFI HDD Mobile DVR

1. H.264 Compression Mode, support 4CH real-time 720P Mega Pixel AHD input and Analog Standard Definition camera input, or 2ch HD input + 2CH SD input.
2. Exclusive pre-allocate DVR Special File System Technology, solving repeatedly wipe cause file fragmentation, solving SD Card file system collapse, data loss and cannot find SD CARD and file garbled, ensure the integrity of the data.
3. 8-36V Adaptive Wide Voltage input, Super low Power Consumption Design;
4. HDD+SD Card storage(maximum support 2TB 2.5" Hard disk and 128GB SD Card.) It can be completely resist car Vibration, Dust and others cause data corruption;
5. Support GPS/BD/G-Sensor; High Reliability Aviation Connectors.
6. High Cost Performance with reliable stability, simple and clear operation menu.

Detail pictures

Remote Viewing Surveillance 3G 4G GPS WIFI HDD Mobile DVR



Richmor

Factory Audit

SMS Device configure
OTA Remote Updating
AHD 720P/960P
2TB HDD+128GB SD Card

NEW



The image shows a black, rectangular mobile DVR device with a silver heat sink on top. The front panel features several ports: a DC 6-36V power input, a 3G antenna, a WiFi antenna, a GPS antenna, a NET (Ethernet) port, a VO (Voice) port, and a PANEL port. There are also four AV IN ports labeled 1, 2, 3, and 4.

CE **FC**  

Remote Viewing Surveillance 3G 4G GPS WIFI HDD Mobile DVR

Richmor

Factory Audit

SMS Device configure
OTA Remote Updating
AHD 720P/960P
2TB HDD+128GB SD Card

NEW



CE FCC ROHS



Remote Viewing Surveillance 3G 4G GPS WIFI HDD Mobile DVR

Front LED Indicators



Remote Viewing Surveillance 3G 4G GPS WIFI HDD Mobile DVR

Back Panel IO Indicators



Richmor surveillance GUI

The main menu includes: Search, System setup, Rec setup, Network setup, Alarm setup, Peripheral setup, System Tools, System Information, as below:

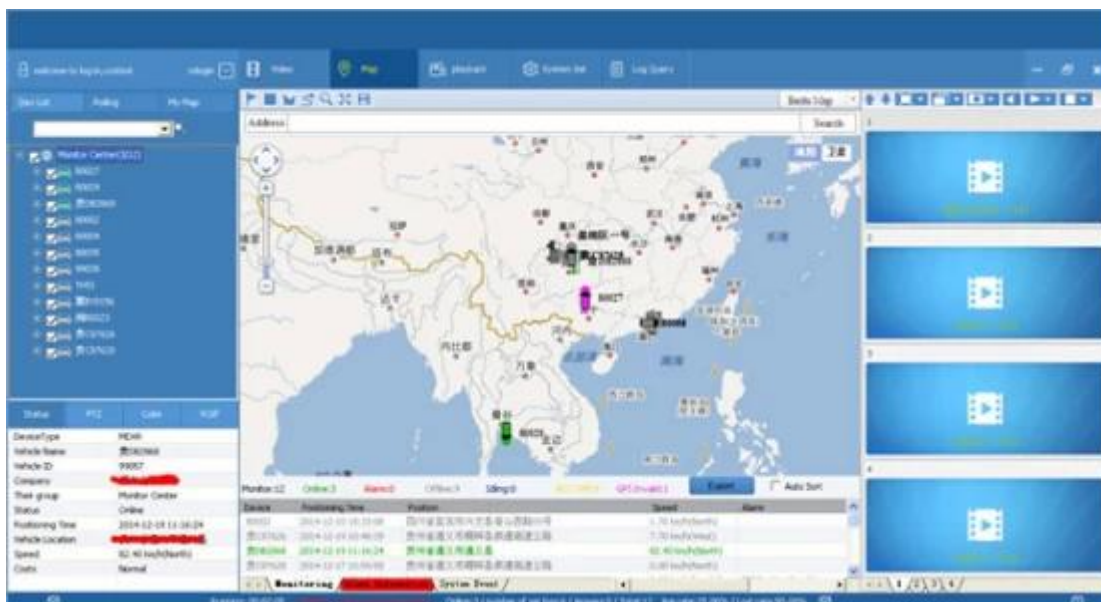


RCM-MDR7104 Parameter Sheet

| Item | Parameter | |
|-----------------------|--|--|
| OS | Linux | |
| Language | English/Chinese/Customized | |
| Video Compression | H.264 Compression | |
| OSD | Overlays information such as date time and vehicle ID | |
| GUI | Graphical User Interface | Setup system parameters with the remote control. |
| Video Record System | Video Input | 4CH 720P AHD input/SD input/ mixed input,aviation connector, 1.0Vp-p, 75Ω |
| | Video Output | 2CH CVBS+ VGA output for optional, 1.0Vp-p, 75Ω,Aviation,Support 1CH Full Screen, 4CH Screen view |
| | Preview | Support 1 channel and 4 channels preview., Support Manual/Alarm Trigger full screen preview |
| | Resolution | 720P/D1/HD1/CIF, MAX:4 channels 720P and 4 channels D1 |
| | Image Quality | 0-7 levels, 0 is the highest level. |
| | Video Standard | PAL: 100f/s , CCIR625 line,50field; NTSC: 120f/s, CCIR525 line,60field; CIF: 256Kbps ~ 1.5Mbps, 8 level video quality optional; HD1: 600Kbps ~ 2.5Mbps, 8 level video quality optional; D1: 800Kbps ~ 3Mbps, 8 level video quality optional; 720P: 4Mbps-6Mbps, multi level video quality optional |
| | Record Mode | The default setting is auto recording after power on. Timed recording, alarm trigger recording and manual recording are supported. |
| Audio | Audio Input | 4CH Aviation Plug Input |
| | Audio Output | 2CH,headphone connect at front panel, BNC Connect on Back panel |
| | Compression | G.726 compression, 8KB/s speed |
| Alarm Input | 7CH Alarm Input,1CH AD Input, impulse speed input,Alarm Linkage | |
| Alarm Output | 2CH Alarm Output,Support Light/ Sound alarm sensor,Oil/Power cut off | |
| Interface | 3CH RS232, POS/Fuel Sensor/ LED Advertisement Connection | |
| | 2CH 485 Interface,Connect PTZ Camera | |
| | 2CH CAN interface | |
| Wireless Transmission | Support Built in 3G transmission, WCDMA, CDMA2000,GPRS, EDGE Built in 4G module optional, TDD-LTE, FDD-LTE | |
| GPS Position | Support Built GPS/BD Module | |
| Storage | HDD | Max 2.5" 2TB HDD |
| | SD Card | Max 128GB SD Card Mirror Recording Keep Data Safety |
| | Update | Support USB Updating, SD Card Updatin, OTA Remote Updating |
| | File Format | H.264 |
| | File System | Special FAT32 File System |
| | USB | USB Interface on Front Panel for data back up by U Disk,Hard Disk |

| | | |
|---------------------|------------------|--|
| Record Replay | Video Search | Search By Record Time/Record Type etc |
| | Playback | Max support 4CH Replay /Stop/Fast/Slow at same time Support forward and backward play at the speed of: x 2,x4,x8,x16. |
| Security | | User/Admin 2 Level Different Password |
| Optional Functions | Voice Call | Support voice call each other |
| | Serial Expand | Support LED Advertisement Panel[]Oil Sensor[] POS[]Bus Station Broadcaster[] Car OBD,ect.external device |
| Voltage & Power | Power Management | Wide Voltage.Support Timed/Delay off |
| | Input Voltage | DC:+6V - +36V |
| | Power | Working []5W |
| | Temperature | -20°C - +70°C |
| Working Environment | Humidity | 20% - 80% |
| | Size | 200 []D[]* 187[]W[]* 62[]H[] mm |
| Others | Weight | 1.90 Kg |

Player software interface (CMSV6 In PC)



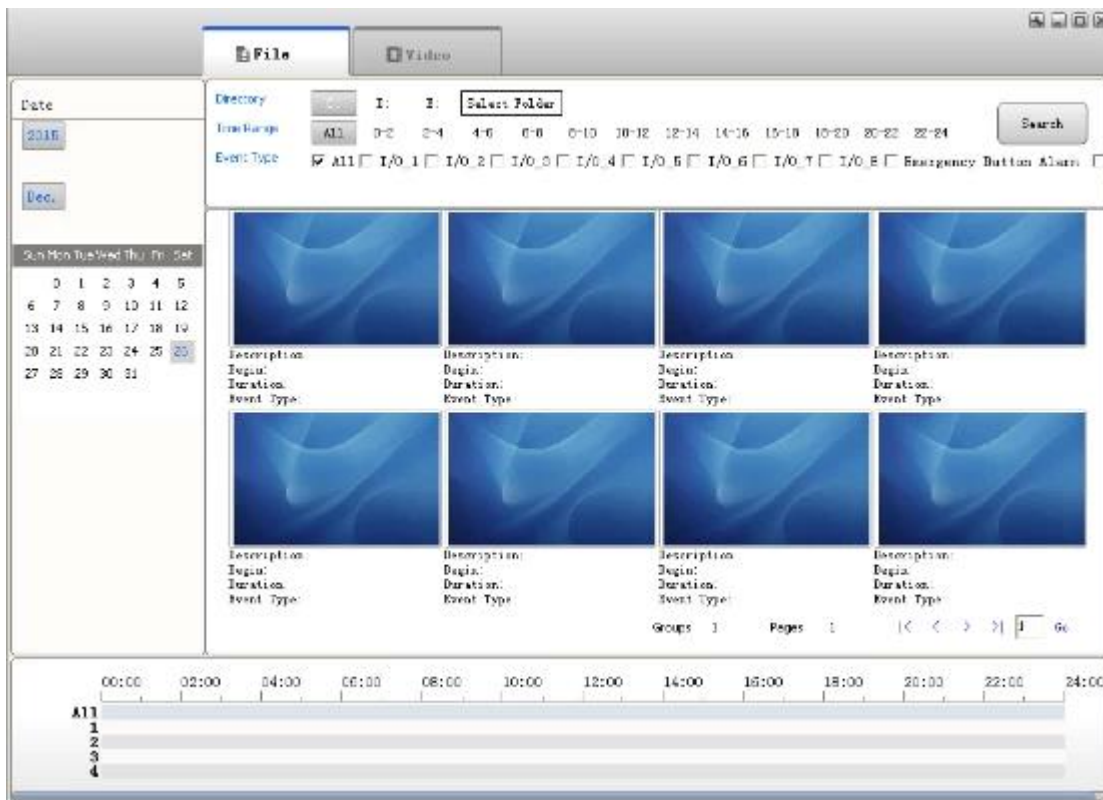
CMSV6 In Mobile Phone.

Have all in the palm of your hand

Real-time monitoring via Mobile Phone --Support iPhone, Android, iPad system



Surveillance platform Playback



Richmor Mobile DVR Mileage Summary

Vehicle Management System

Report Device User

Mileage Summary

Begin Time: 2016-01-08 00:00:00 To: 2016-01-08 16:27:09

Device: All Devices Select Device Query Report To Excel Report To Csv Report To Pdf

| Index | Vehicle | Total Mileage (KM) | Begin Time | Start Mileage (KM) | Start Position | End Time | End Mileage (KM) |
|-------|---------|--------------------|---------------------|--------------------|-----------------------|---------------------|------------------|
| 1 | 粤E23114 | 174.88 | 2016-01-08 09:03:32 | 22.95 | 22.534254, 114.006444 | 2016-01-08 16:25:41 | 157.83 |
| 2 | 粤E23130 | 202.07 | 2016-01-08 07:33:11 | 18.1 | 22.884256, 112.800502 | 2016-01-08 16:25:28 | 171.57 |
| 3 | 24012 | 277.42 | 2016-01-08 07:09:55 | 23.41 | 23.269942, 112.873227 | 2016-01-08 14:57:24 | 300.83 |
| 4 | 粤A25248 | 97.4 | 2016-01-08 00:00:25 | 298.97 | 41.572468, 118.788243 | 2016-01-08 09:42:39 | 41.09 |
| 5 | 24023 | 0 | 2016-01-08 00:00:07 | 36.26 | 37.789758, 112.731127 | 2016-01-08 16:19:07 | 16.26 |
| 6 | 粤K5307 | 418.36 | 2016-01-08 06:09:54 | 36.96 | 35.461432, 117.847703 | 2016-01-08 16:20:11 | 92.83 |
| 7 | 粤J1712 | 129.98 | 2016-01-08 04:46:40 | 26.51 | 35.876478, 117.653341 | 2016-01-08 14:25:37 | 144.92 |
| 8 | 粤H2520 | 45.91 | 2016-01-08 00:00:03 | 138.13 | 22.854324, 112.498507 | 2016-01-08 16:15:15 | 115.82 |
| 9 | 粤H2523 | 43.81 | 2016-01-08 00:00:21 | 92 | 22.854197, 112.497683 | 2016-01-08 16:11:28 | 73.72 |
| 10 | 粤H2526 | 111.72 | 2016-01-08 00:00:15 | 145.61 | 22.854323, 112.498545 | 2016-01-08 16:24:40 | 93.9 |
| 11 | 粤H2510 | 52.92 | 2016-01-08 00:00:10 | 93.24 | 22.854234, 112.497788 | 2016-01-08 16:15:35 | 57.92 |
| 12 | 粤A2883 | 655.08 | 2016-01-08 00:00:29 | 354.36 | 35.950442, 117.658700 | 2016-01-08 16:24:44 | 1089.74 |
| 13 | 24058 | 224.42 | 2016-01-08 07:00:58 | 44.57 | 37.849758, 118.944070 | 2016-01-08 16:17:34 | 60.4 |
| 14 | 28999 | 2.38 | 2016-01-08 13:13:08 | 17.6 | 38.734428, 111.235947 | 2016-01-08 13:57:27 | 18.61 |
| 15 | 81588 | 369.29 | 2016-01-08 00:00:54 | 51.94 | 33.733205, 115.868921 | 2016-01-08 16:03:50 | 420.33 |

Richmor actual case

Richmor 锐驰牌 移动视频监控平台

公交客车 锐驰曼实用放心有品味

| 车牌号 | 车牌颜色 | 位置 | 速度 | 状态 |
|-------|-------|---------------|-----------|----|
| 24003 | 24003 | 广东省肇庆市端州区江滨北路 | 0.00 km/h | 静止 |
| 24023 | 24023 | 广东省肇庆市端州区江滨北路 | 0.00 km/h | 静止 |
| 24018 | 24018 | 广东省肇庆市端州区江滨北路 | 0.00 km/h | 静止 |
| 24048 | 24048 | 广东省肇庆市端州区江滨北路 | 0.00 km/h | 静止 |

Application

Widely used in passenger car, bus, taxi, school bus, lorry, dangerous vehicle, personal car and ship etc.



Travelling Bus



Public Bus



Dangerous chemical car



Tobacco Logistics



Taxi



Truck



School Bus



Express Logistics



Road Police Car



Border Car



Traffic Inspection Car



Civil Work Vehicle



Escort Vehicle



Ambulance



Fixed place monitor



Ship Monitor

Buying Guides

Packaging

1 unit with all standard accessories such as AV Cables/IO Cable/Power Cable/Key etc

Neutral paper box or Color paper box with Logo Richmor printed, also welcome customized package.



Richmor Brand Package



Standard Package

Shipping

Strong cooperated with DHL/UPS Etc for fast and safety delivery.

- a. 2-5 days after payment cleared for sample order.
- b. 5-10 days after payment cleared depends on order quantity for bulk order.

Payment



Service

1. Well Trained Sales team and engineers for fast and professional support
2. OEM/ODM Service



CUSTOMER SATISFACTION

- Excellent Aftersale service
- 12 months warranty
- 24 hours customer service
- We understand the importance of our customers

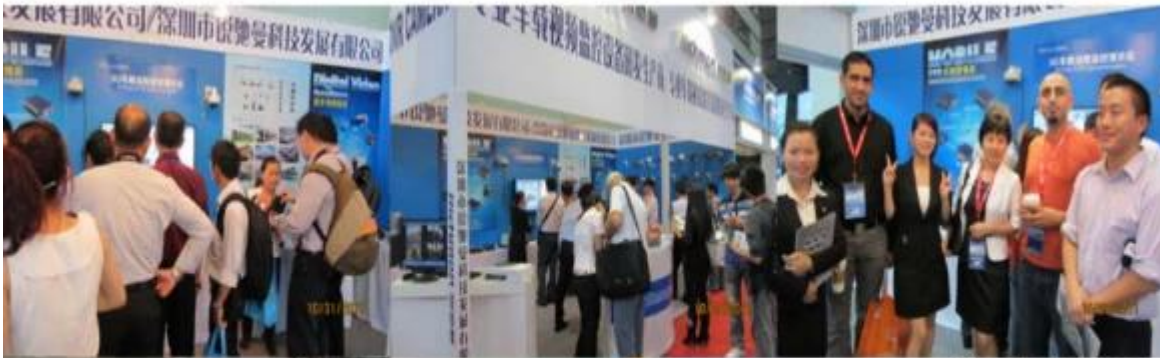
Certifications



Exhibition

Richmor

CPSE2012 in Shenzhen



CPSE2013

10.29-10.31

4 Booth we have

Welcome you !!!



CPSE2012-- Guangdong TV Report-Shenzhen Richmor



About us&Customers:



EXCELLENT SUPPORT



What is our expectation

Being your helpful and long term partner meeting your requirement.

Any question about your vehicle project, contact our representative Vicky.

Email: overseasales-7@rcmctv.com Skype: [rcmctvsales7](https://www.skype.com/en/contacts/overseasales7)