

For Taxi monitoring dvr, 3g wifi gps car dvr 4 Channel wireless network mobile dvr

(RCM-MDR 7104 Series)

Product features

Romote Viewing Surveillance 3G 4G GPS WIFI HDD Mobile DVR

1. H.264 Compression Mode, support 4CH real-time 720P Mega Pixel AHD input and Analog Standard Definition camera input, or 2ch HD input + 2CH SD input.
2. Exclusive pre-allocate DVR Special File System Technology, solving repeatedly wipe cause file fragmentation, solving SD Card file system collapse, data loss and cannot find SD CARD and file garbled, ensure the integrity of the data.
3. 8-36V Adaptive Wide Voltage input, Super low Power Consumption Design;
4. HDD+SD Card storage(maximum support 2TB 2.5'' Hard disk and 128GB SD Card.) It can be completely resist car Vibration, Dust and others cause data corruption;
5. Support GPS/BD/G-Sensor; High Reliability Aviation Connectors.
6. High Cost Performance with reliable stability, simple and clear operation menu.

Detail pictures

Romote Viewing Surveillance 3G 4G GPS WIFI HDD Mobile DVR

Richmor

 **Factory Audit**

SMS Device configure
OTA Remote Updating
AHD 720P/960P
2TB HDD+128GB SD Card

NEW



CE

FC



Remote Viewing Surveillance 3G 4G GPS WIFI HDD Mobile DVR

Richmor

Factory Audit

SMS Device configure
OTA Remote Updating
AHD 720P/960P
2TB HDD+128GB SD Card

NEW



CE FCC ROHS



Remote Viewing Surveillance 3G 4G GPS WIFI HDD Mobile DVR

Front LED Indicators



Remote Viewing Surveillance 3G 4G GPS WIFI HDD Mobile DVR

Back Panel IO Indicators



Richmor surveillance GUI

The main menu includes: Search, System setup, Rec setup, Network setup, Alarm setup, Peripheral setup, System Tools, System Information, as below:

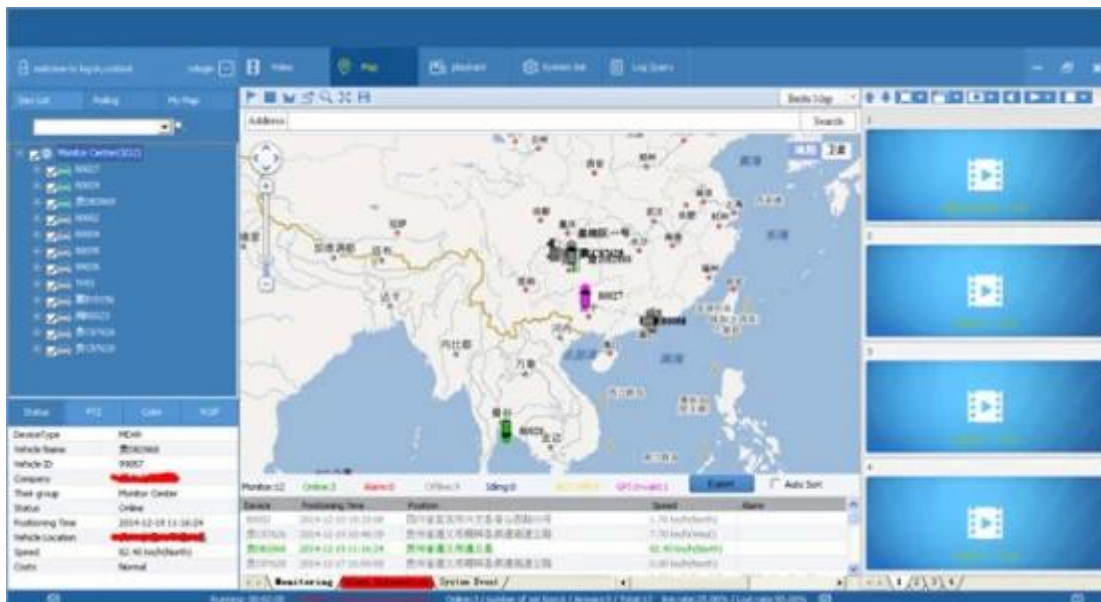


RCM-MDR7104 Parameter Sheet

Item	Parameter	
OS	Linux	
Language	English/Chinese/Customized	
Video Compression	H.264 Compression	
OSD	Overlays information such as date time and vehicle ID	
GUI	Graphical User Interface	Setup system parameters with the remote control.
Video Record System	Video Input	4CH 720P AHD input/SD input/ mixed input,aviation connector, 1.0Vp-p, 75Ω
	Video Output	2CH CVBS+ VGA output for optional, 1.0Vp-p, 75Ω,Aviation,Support 1CH Full Screen, 4CH Screen view
	Preview	Support 1 channel and 4 channels preview., Support Manual/Alarm Trigger full screen preview
	Resolution	720P/D1/HD1/CIF, MAX:4 channels 720P and 4 channels D1
	Image Quality	0-7 levels, 0 is the highest level.
	Video Standard	PAL: 100f/s , CCIR625 line,50field; NTSC: 120f/s, CCIR525 line,60field; CIF: 256Kbps ~ 1.5Mbps, 8 level video quality optional; HD1: 600Kbps ~ 2.5Mbps, 8 level video quality optional; D1: 800Kbps ~ 3Mbps, 8 level video quality optional; 720P: 4Mbps-6Mbps, multi level video quality optional
	Record Mode	The default setting is auto recording after power on. Timed recording, alarm trigger recording and manual recording are supported.
Audio	Audio Input	4CH Aviation Plug Input
	Audio Output	2CH,headphone connect at front panel, BNC Connect on Back panel
	Compression	G.726 compression, 8KB/s speed
Alarm Input	7CH Alarm Input,1CH AD Input, impulse speed input,Alarm Linkage	
Alarm Output	2CH Alarm Output,Support Light/ Sound alarm sensor,Oil/Power cut off	
Interface	3CH RS232, POS/Fuel Sensor/ LED Advertisement Connection	
	2CH 485 Interface,Connect PTZ Camera	
	2CH CAN interface	
Wireless Transmission	Support Built in 3G transmission, WCDMA, CDMA2000,GPRS, EDGE Built in 4G module optional, TDD-LTE, FDD-LTE	
GPS Position	Support Built GPS/BD Module	
Storage	HDD	Max 2.5" 2TB HDD
	SD Card	Max 128GB SD Card Mirror Recording Keep Data Safety
	Update	Support USB Updating, SD Card Updatin, OTA Remote Updating
	File Format	H.264
	File System	Special FAT32 File System
	USB	USB Interface on Front Panel for data back up by U Disk,Hard Disk

Record Replay	Video Search	Search By Record Time/Record Type etc
	Playback	Max support 4CH Replay /Stop/Fast/Slow at same time Support forward and backward play at the speed of: x 2,x4,x8,x16.
Security		User/Admin 2 Level Different Password
Optional Functions	Voice Call	Support voice call each other
	Serial Expand	Support LED Advertisement Panel[]Oil Sensor[] POS[]Bus Station Broadcaster[] Car OBD,ect.external device
Voltage & Power	Power Management	Wide Voltage.Support Timed/Delay off
	Input Voltage	DC:+6V - +36V
	Power	Working []5W
	Temperature	-20°C - +70°C
Working Environment	Humidity	20% - 80%
	Size	200 []D[]* 187[]W[]* 62[]H[] mm
Others	Weight	1.90 Kg

Player software interface (CMSV6 In PC)



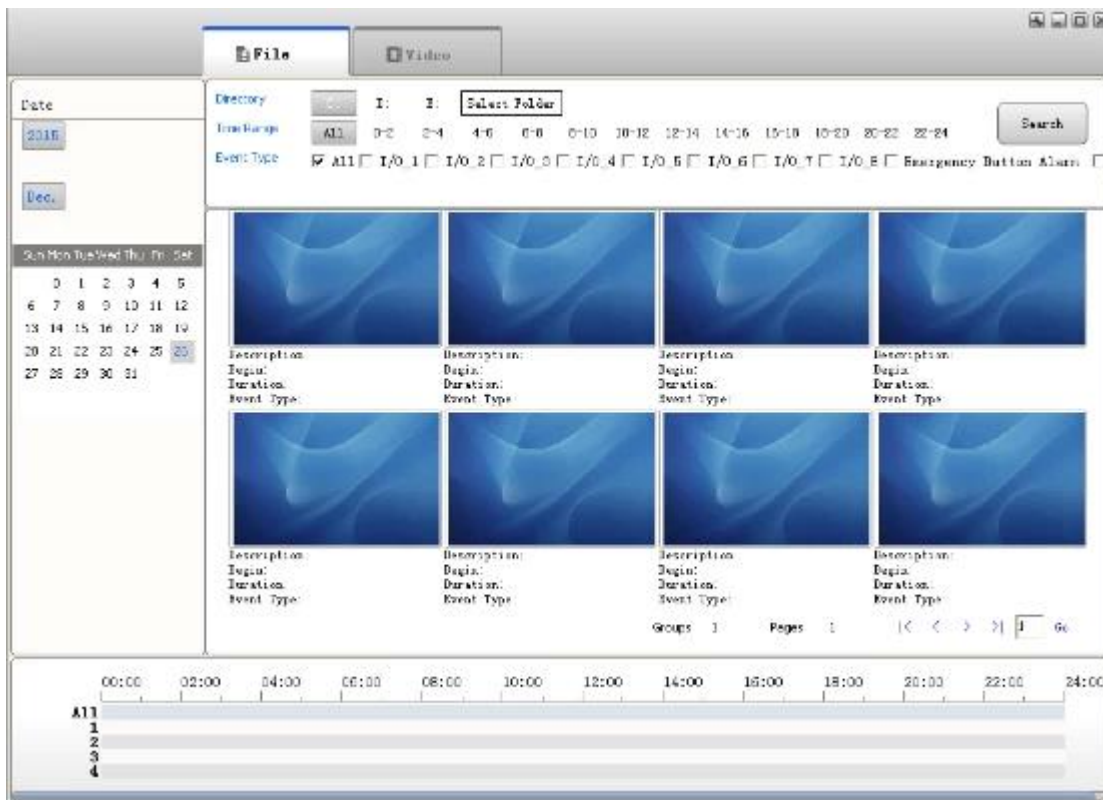
CMSV6 In Mobile Phone.

Have all in the palm of your hand

Real-time monitoring via Mobile Phone --Support iPhone, Android, iPad system



Surveillance platform Playback



Richmor Mobile DVR Mileage Summary

Vehicle Management System Personal 管理用户 | Manager | Exit

Report Device User

Mileage Summary

Begin Time: 2016-01-08 00:00:00 To: 2016-01-08 16:27:09

Device: All Devices

Index	Vehicle	Total Mileage (KM)	Begin Time	Start Mileage (KM)	Start Position	End Time	End Mileage (KM)
1	鄂E33114	174.88	2016-01-08 09:03:32	22.95	22.534254, 114.006444	2016-01-08 16:25:41	157.83
2	鄂E33030	202.07	2016-01-08 07:33:11	18.1	22.884256, 112.802502	2016-01-08 16:25:28	171.57
3	24012	277.42	2016-01-08 07:09:55	23.41	23.269942, 116.873227	2016-01-08 14:57:24	300.83
4	鄂A9548	97.4	2016-01-08 00:00:25	298.97	41.572468, 118.788245	2016-01-08 09:42:39	41.09
5	24023	0	2016-01-08 00:00:07	36.26	37.788758, 120.731127	2016-01-08 16:19:07	16.26
6	鄂K5307	418.36	2016-01-08 06:09:54	36.86	35.461432, 117.847701	2016-01-08 16:20:11	92.83
7	鄂J1712	128.98	2016-01-08 04:48:40	26.51	35.876478, 117.653341	2016-01-08 14:25:07	144.92
8	鄂H9250	45.81	2016-01-08 00:00:03	138.13	22.854394, 112.498509	2016-01-08 16:15:15	115.82
9	鄂H9253	43.81	2016-01-08 00:00:21	82	22.854197, 112.497683	2016-01-08 16:11:28	73.72
10	鄂H9368	111.72	2016-01-08 00:00:15	145.61	22.854323, 112.498045	2016-01-08 16:24:40	93.9
11	鄂H9510	52.92	2016-01-08 00:00:10	83.24	22.854234, 112.497788	2016-01-08 16:15:55	57.92
12	鄂AA3883	655.08	2016-01-08 00:00:29	354.36	35.950943, 117.658700	2016-01-08 16:24:44	1089.74
13	24058	224.42	2016-01-08 07:00:58	44.57	37.846758, 118.844070	2016-01-08 16:17:34	60.4
14	28999	2.38	2016-01-08 13:13:08	17.6	38.734428, 121.236047	2016-01-08 13:57:27	18.61
15	81588	368.29	2016-01-08 00:00:54	51.94	33.733205, 115.868921	2016-01-08 16:03:50	420.33

Remote Viewing Surveillance 3G 4G WIFI GPS Mobile DVR Taxi solution

出租车监控解决方案

TAXI SOLUTION



功能特点 Features



实时监控, GPS定位
Real-time Video, GPS positioning

运营管理
Fleet Management



出租车
监控
解决方案



紧急报警 Emergency Alarm



历史轨迹查询
GPS Position and Path Track



广告发布 Advertising



载客状态显示
Passenger status display

采用高压压缩, 图像清晰的H.264编码格式, 支持开机录像、定时录像及报警录像, 支持ACC熄火延时录像。内置GPS全球定位系统, 可通过3G网络远程查看实时视频, 车辆位置, 回放历史录像。支持手机远程监控。Adopt H.264 Video Compression, support Auto Recording, Timed Recording, Alarm Recording, also ACC Power on/off Recording. Built-in GPS System, can view the real time video and Vehicle Position, replay Historical Video through 3G, Mobile Phone real time view supported.

具有线路调度, 运营监控管理功能; 可通过可视化调度指挥、语音广播、双向对讲、语音通话、文字短信等信息交互, 及时处理各种事件, 比如塞车、车辆故障、交通事故等。With Line Scheduling and operation management function, can handle all kinds of emergency thing such as heavy traffic, Vehicle Breakdown, traffic accident through Real time video, Broadcast, Intercom talk back function etc.

遇到抢劫等突发事件时, 驾驶员可隐蔽地触发紧急报警按钮, 管理中心会立即发出警报声, 自动弹出现场视频, 启动录像, 工作人员可根据现场情况及时应对处理。Taxi Driver can click the Emergency Button, concealed when meet rob, a small window will show with sound alarm in center office and start recording, the office man can handle it according the video condition.

车辆行驶的历史轨迹记录, 监控管理中心可以在电子地图上远程回放, 重现车辆的行驶过程。A blue mark in the map show the vehicle driving route automatically and continuous, refresh the Vehicle latest Position. Remote replay the vehicle driving route in map at center office.

控制和下发LED显示屏的显示信息, 包括各种商业广告信息、公益信息、政府的方针政策、交通信息、天气预报等各种信息。Control and sent the information including: Commercial information, public information, government policies and regulations, traffic information, weather forecast etc to LED Screen, fast reaction convenient for information advertise and control.

不用开启视频监控, 运营管理中心也可实时显示出租车辆的载客状态, 便于统一调度管理, 高效利用资源。Without Real time Video, the office man can also know the Taxi Passenger condition, convenient for Taxi fleet management saving the resource, more efficient.



Application

Widely used in passenger car, bus, taxi, school bus, lorry, dangerous vehicle, personal car and ship etc.



Travelling Bus



Public Bus



Dangerous chemical car



Tobacco Logistics



Taxi



Truck



School Bus



Express Logistics



Road Police Car



Border Car



Traffic Inspection Car



Civil Work Vehicle



Escort Vehicle



Ambulance



Fixed place monitor



Ship Monitor

Buying Guides

Packaging

1 unit with all standard accessories such as AV Cables/IO Cable/Power Cable/Key etc

Neutral paper box or Color paper box with Logo Richmor printed,also welcome customized package.



Richmor Brand Package

Standard Package

Shipping

Strong cooperated with DHL/UPS Etc for fast and safety delivery.

- a. 2-5 days after payment cleared for sample order.
- b. 5-10 days after payment cleared depends on order quantity for bulk order.

Payment



Service

1. Well Trained Sales team and engineers for fast and professional support

2. OEM/ODM Service



CUSTOMER SATISFACTION

- Excellent Aftersale service
- 12 months warranty
- 24 hours customer service
- We understand the importance of our customers

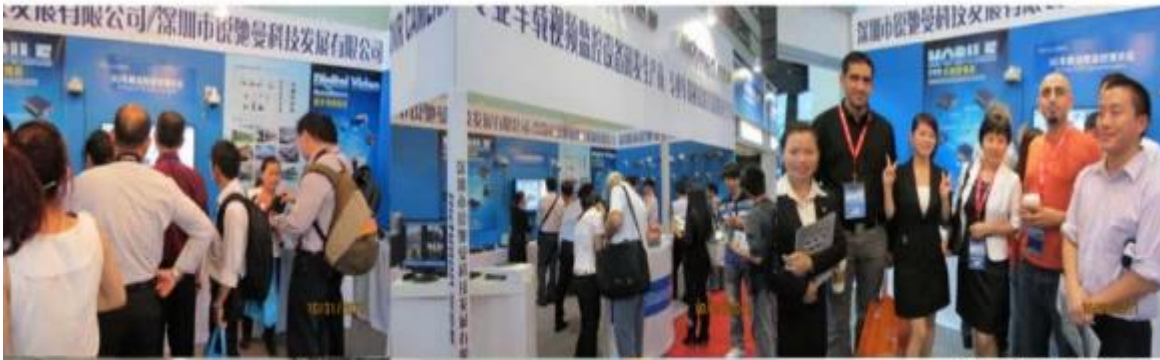
Certifications



Exhibition

Richmor

CPSE2012 in Shenzhen



CPSE2013

10.29-10.31

4 Booth we have

Welcome you !!!



CPSE2012-- Guangdong TV Report-Shenzhen Richmor



About us&Customers:



EXCELLENT SUPPORT



What is our expectation

Being your helpful and long term partner meeting your requirement.

Any question about your vehicle project, contact our representative Vicky.

Email: overseasales-7@rcmctv.com Skype: [rcmctvsales7](https://www.skype.com/en/contacts/overseasales7)