

# 5CH Million Pixels video surveillance Including 1CH 1080P IP Camera input MOBILE DVR

RCM-MDVR 7015 SEIRES

---

## Product Description

---

The most outstanding feature for this series DVR is:

-----5CH Million Pixels video recording which means

(4CH real-time 720p Analog HD input + 1CH 1080P network IP Camera input)

**5CH mobile DVR recorder 2TB HDD+128GB Mobile NVR/DVR WIFI/3G/4G GPS G-sensor**



**5CH mobile DVR recorder 2TB HDD+128GB Mobile NVR/DVR WIFI/3G/4G GPS G-sensor**



**Richmor actual case**

**5CH mobile DVR recorder 2TB HDD+128GB Mobile NVR/DVR WIFI/3G/4G GPS G-sensor**

**Richmor 锐驰曼 移动视频监控平台**

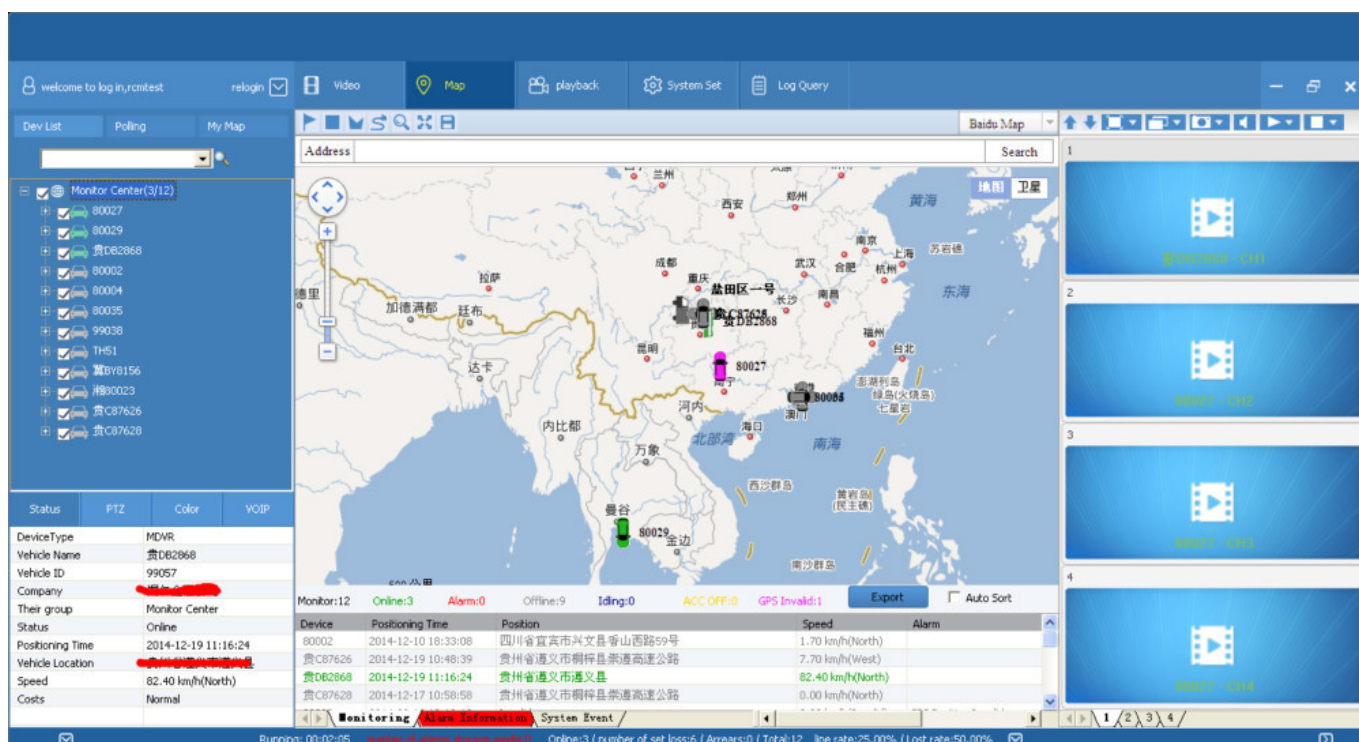
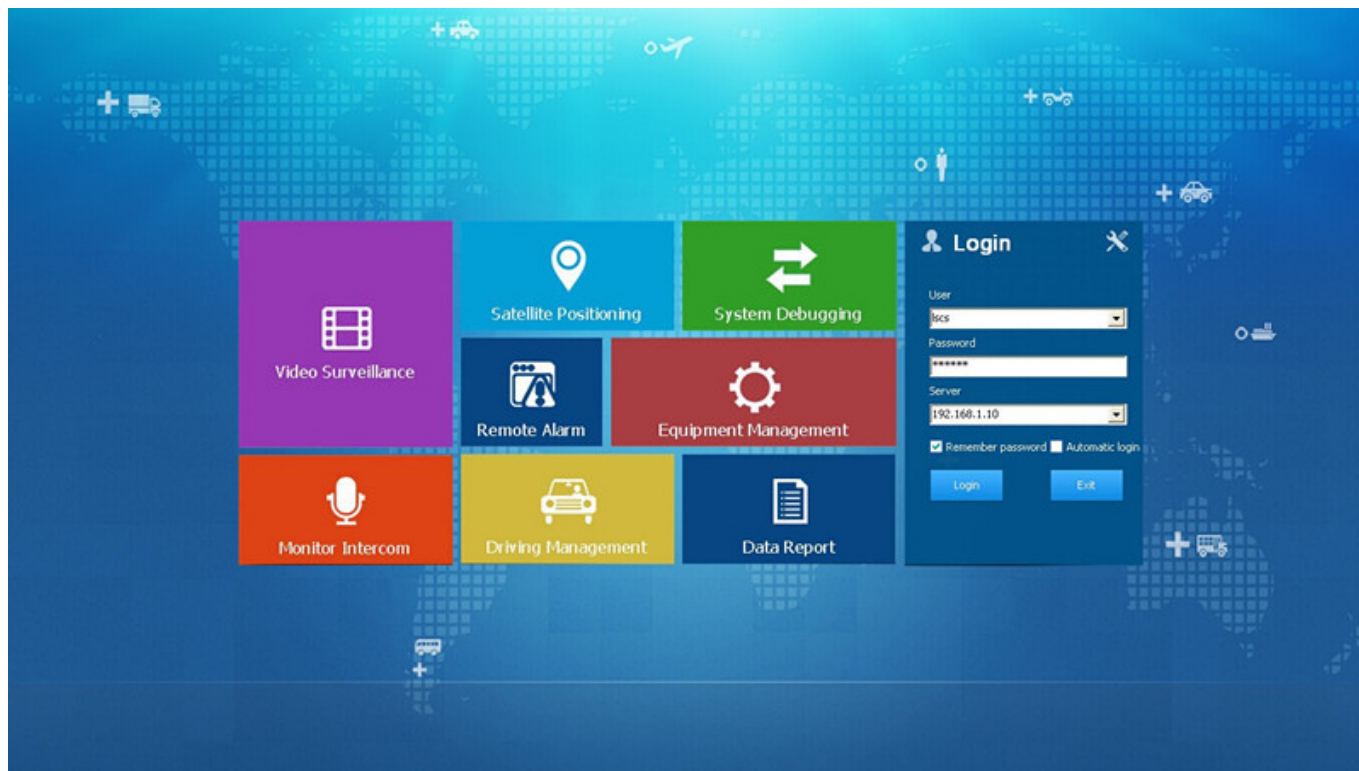
校车-锐驰曼智慧护航爱相传

终端	GPS时间	位置	速度	报警	其他信息
24003	2015-09-11 17:53:18	广东省汕头市南滨路5202(西二村)	0.00 km/h(南)	50卡(不存在)	网络信号好, GPS模块存在
24003	2015-09-11 17:53:08	广东省汕头市南滨路	44.00 km/h(南)	50卡(不存在)	网络信号好, GPS模块存在
24007	2015-09-11 17:53:18	广东省汕头市南滨路5202	36.00 km/h(南)	50卡(不存在)	网络信号好, GPS模块存在
24009	2015-09-11 17:53:03	广东省汕头市南滨路5202	0.00 km/h(北)	50卡(不存在)	网络信号好, GPS模块存在

**Richmor 锐驰曼 移动视频监控平台**

公交客车-锐驰曼实用放心有品味

终端	GPS时间	位置	速度	报警
24003	2015-09-11 10:46:37	广东省汕头市陆丰市G15(滨海公路)	83.00 km/h(西南)	G
24023	2015-09-11 10:46:46	山东省烟台市莱州市	0.00 km/h(北)	G
24036	2015-09-11 10:46:38	河南省南阳市宛城区世纪东路	49.00 km/h(西)	G
24049	2015-09-11 10:46:44	广东省云浮市新兴县G113(新兴大道西)	0.00 km/h(北)	R



**Richmor 5CH 720P HD+1080P Car HDD Mobile DVR**



### Main Features

- \*HIS Solution,H.264 Compression,support 5ch Million Pixels video surveillance, video recording and playback (4CH real-time 720p million Analog HD input and analog standard definition camera + 1CH 1080P network camera input);
- \*3CH video output (2CH CVBS video output,Support front and rear output; 1CH VGA output for optional )
- \*Exclusive pre-allocate DVR Special File System Technology,Solving repeatedly wipe cause file fragmentation, solving storage file system crash, data loss and cannot find storage media and file garbled, ensure the integrity of the data.
- \*6-36V wide voltage with low power consumption. Support Reverse Protection,over-voltage/over-current protection.Output max to 10Amps current, support 12V & 5V peripheral equipment power supply. Ultra low power design;
- \*Unique UPS Technology ensures the integrity of record when power failure occurs,even can last for 8-10s.
- \*HDD+SD Card Storage ( Support 2.5" HDD, max 128G SD Card) protect from Shock & Dust damage;support USB port data backup and device update;
- \*Support 2 USB ports, data backup and equipment upgrades.
- \*Support 9CH alarm input (1CH Analog input + 8CH IO alarm input),2CH Independent alarm output.
- \*Support HDD heating functions,can work in harsh environment.
- \*Support GPS/BD/G-Sensor Extension module;
- \*Realize real-time monitor through 3G/4G;
- \*Support Broadcast/Intercom/Text sent etc;can add oil sensor/temperature sensor/POS/LED Advertisement Panel;
- \*Support OTG device upgrade automatically, , device can automatically upgrade version update, maintenance is more convenient
- \*Support IOS/Android Phone Remote monitor
- \*High reliability aviation connectors, high cost performance, stable and reliable.

## RCM-MDR7105 Parameter Sheet

Item		Parameter
OS		Linux
Language		English/Chinese/Customized
Video Compression		H.264 Compression
OSD		Overlays information such as date time and vehicle ID
GUI	Graphical User Interface	Setup system parameters with the remote control.
Video Record System	Video Input	4CH real-time 720p million pixels Analog HD input / 4CH analog standard definition input/2CH analog input+ 2CH HD mixed input+ 1CH 1080P network camera input), aviation connector, 1.0Vp-p, 75Ω
	Video Output	2CH CVBS output+1CH VGA output for optional,1.0Vp-p, 75Ω,Support 1CH Full Screen,4CH Screen view
	Preview	Support 1 channel and 4 channels preview, 5 channels splice preview Support Manual/ Alarm Trigger full screen preview
	Resolution	1080P/720P/D1/HD1/CIF, MAX:4 channels of 720P + 1080P / 4 channels of D1
	Image Quality	1-4 levels, 1 is the highest level.
	Video Standard	PAL: 100f/s , CCIR625 line,50field; NTSC: 120f/s, CCIR525 line,60field; CIF: 256Kbps ~ 1.5Mbps, 8 level video quality optional; HD1: 600Kbps ~ 2.5Mbps, 8 level video quality optional; D1: 800Kbps ~ 3Mbps, 8 level video quality optional; 720P: 4Mbps-6Mbps, multilevel video quality optional
	Record Mode	The default setting is auto recording after power on. Timed recording, alarm trigger recording and manual recording are supported.
Audio	Audio Input	4CH Aviation Plug Input
	Audio Output	2CH,headphone connect at front panel, BNC Connect on Back panel
	Compression	G.726 compression, 8KB/s speed
Alarm Input		7CH Alarm Input,1CH AD Input, impulse speed input,Alarm Linkage
Alarm Output		2CH Alarm Output,Support Light/ Sound alarm sensor,Oil/Power cut off
Interface		3CH RS232, POS/Fuel Sensor/ LED Advertisement Connection
		2CH 485 Interface,Connect PTZ Camera

Wireless Transmission		Support Built in 3G transmission,WCDMA, CDMA2000,GPRS, EDGE Built in 4G module optional, TDD-LTE, FDD-LTE
GPS Position		Support Built GPS/BD Module
Storage	HDD	Max 2.5" HDD
	SD Card	Max 128GB SD Card Mirror Recording Keep Data Safety
	Update	Support USB Updating, SD Card Updating, OTA Remote Updating
	File Format	H.264
	File System	Special FAT32 File System
Record Replay	USB	USB Interface on Front Panel for data back up by U Disk,Hard Disk
	Video Search	Search By Record Time/Record Type etc
	Playback	Max support 4CH Replay /Stop/ Fast/Slow at same time
		Support forward and backward play at the speed of: x 2,x4,x8,x16.
Security		User/Admin 2 Level Different Password
Optional Functions	Voice Call	Support voice call each other
	TTS Voice Broadcast	Support TTS voice broadcast function.
	Serial Expand	Support LED Advertisement Panel Oil Sensor□POS□Bus Station Broadcaster□ Car OBD,etc. external device
Voltage & Power	Power Management	Wide Voltage.Support Timed/Delay off/ over-load/Reversing connection/voltage shortage/ short circuit etc.
	Input Voltage	DC:+6V - +36V
	Power	Working □5W
Working Environment	Temperature	-20℃ - +70℃
	Humidity	20% - 80%
Others	Size	200 □D□* 187□W□* 62□H□ mm
	Weight	1.90 Kg

## Our Services







## Advantages

### Product Features:

HIS Solution, H.264 Compression, Multiple Streams record, 5CH AHD Video input, 4CH real-time 720p million Analog HD input and analog standard definition camera + 1CH 1080P network camera input,

High quality real time recording, 1080P/720P/CIF/HD1/D1 Optional, quality adjustable;

Professional Car Power Design, 6-36V wide voltage, Provide reverse voltage/over-load/short circuit protection, to meet kinds of car application;

Support 12VDC output voltage, power supply for Camera/Screen etc;



Max 2TB HDD + 128GB SD Card Mirror Recording,protect DVR from shock & Dust damage;  
Watchdog abnormal restart function,protect SD Card and Record;

Exclusive Pre-allocated Vehicle File System protect data completeness ;

ACC Delay off,can set 24 hours;

Unique UPS Technology ensures the integrity of record when power failure occurs,even can last for 10-15s.

Auto Record/Manual Record/Alarm Record etc working mode to meet different requirements;  
Show Car status/Plate/Driving Route/Low Speed/Over Speed information for convenient management;  
Support GPS/BD,3G/4G Module Optional,WIFI extend;  
Strong Network,device configure via IE Web,Support SMS Get device information and configure;  
Support Monitoring,Two-way Intercom, PTZ, Alarm,Over-speed,Geo Fence etc through remote control platform;  
8CH IO Alarm input(Door Open,Light,Turn direction,brake,reverse etc),can linkage kinds of alarm;

2CH Alarm Output,Support Light and Sound alarm sensor,Oil/Power cut off;  
High level aviation interface,easily installation and better shockproof, more stable;

Support Local Auto-photo when alarm input.

High reliable aviation connectors input/output, easy installation,stronger anti-vibration.  
Easily Smart GUI Interface, saving time in device setting;  
Strong Stable Application,Support 3G/4G Real-time monitor, talk-back,playback,record,picture snap etc;  
Updated through SD or OTA Remote Automatic updating,more stable and convenient;Support Phone Remote Monitor,Phone Calling etc;

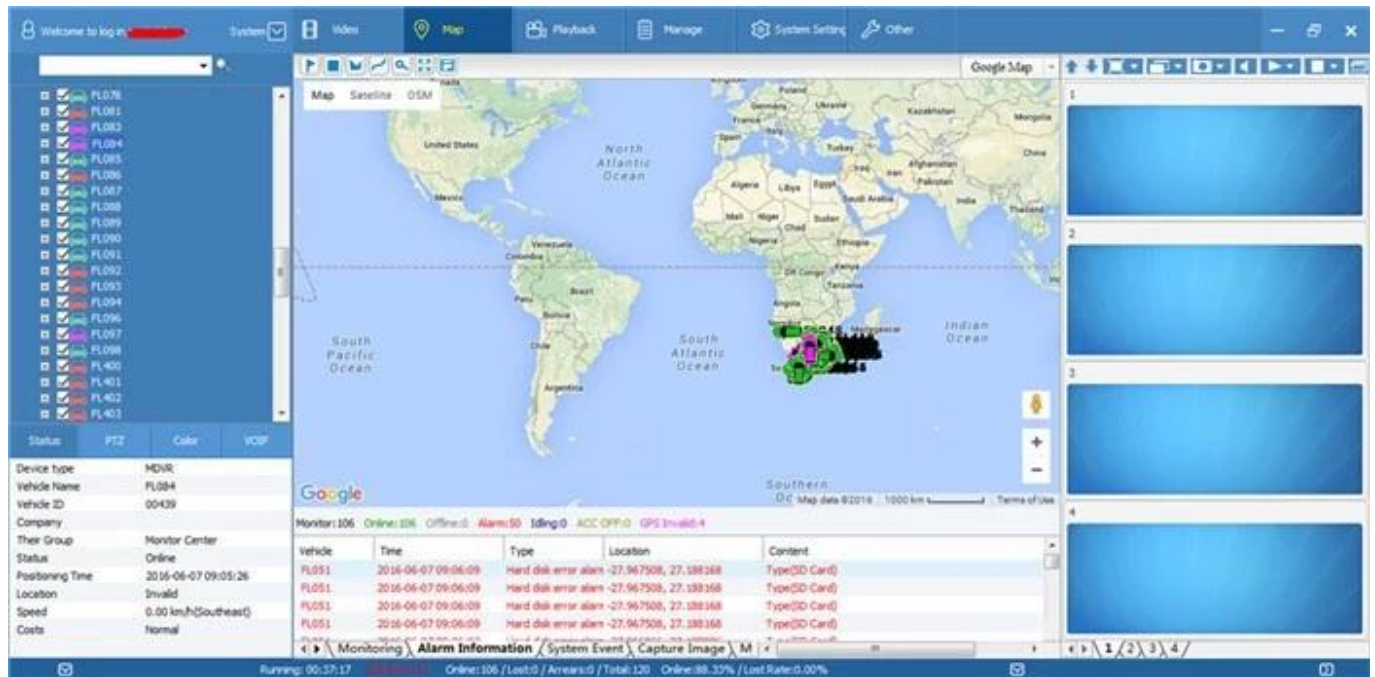
Support PTZ/POS/Oil Sensor/LED Advertisement Panel etc;

Support Ministry of Transport Standard Agreement

Be Customized according your request;

## **PC&Phone Monitoring**

# **CMSV6 Interface**



# CMSV6 In Mobile Phone

Have all in the palm of your hand

Real-time monitoring via Mobile Phone

Support iPhone, Android, iPad system



**Video & Audio Monitoring**   **Online Vehicle**   **GPS**  
**Satellite Map**   **Video Storage**  
**PTZ control**   **Tracking Display**   **Picture**  
**Snapshot**   **Voice intercom**

## FQA

Q: During playback, the map doesn't show?

A: Possible reasons are as follows;

1.Net cable did not connect to PC;

2.Net works, but the computer can not get to the Internet;

Q: When SD card and HDD records, How is the record coverage?

A: SD card and HDD will record circularly for each other. When they are full, they

will delete the original video records respectively.

Q: The device was opened, HDD was installed, but the device can not record successful.

A: 1. Check the HDD/SD Card was formatted or not, the unformatted HH/SD Card can not be used. Enter into the Main Menu - System Setup - Formatting the new installed HDD/SD Card.

2. If the recording channel is closed, if set the timing recording, it can not recording when it beyond the period of timing recording.

3. If the HDD is connect well, if the HDD/SD light is on.



Richmor Brand Package



Standard Package



## ***Shipping***

**Strong cooperated with DHL/UPS Etc for fast and safety delivery.**

**a. 2-5 days after payment cleared for sample order.**

**b. 5-10 days after payment cleared depends on order quantity for bulk order.**

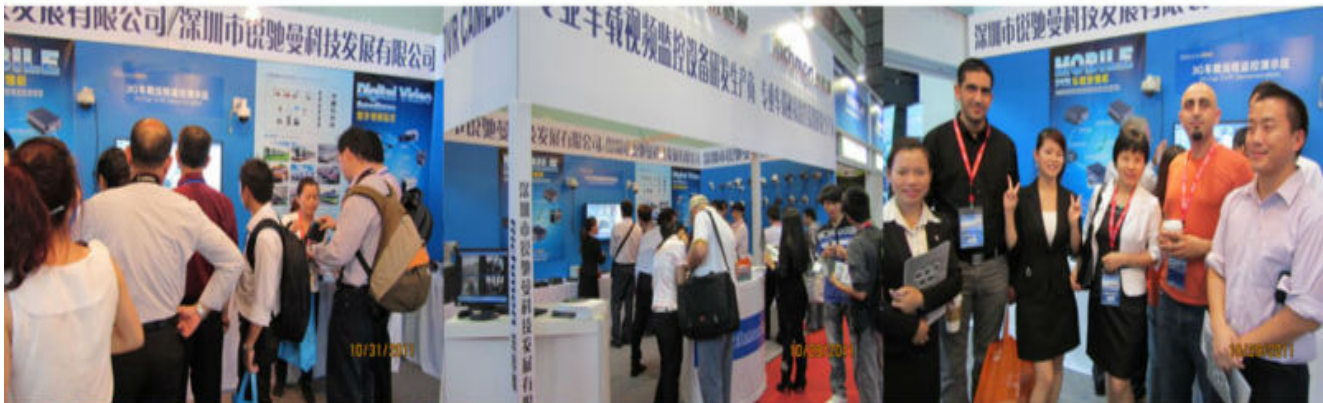




**Exhibition**

# Richmor

## CPSE2012 in Shenzhen



## CPSE2013

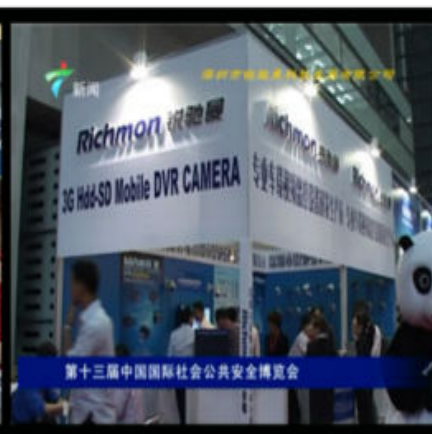
10.29-10.31

4 Booth we have

Welcome you !!!



## CPSE2012-- Guangdong TV Report-Shenzhen Richmor



### Certifications



## EXCELLENT SUPPORT



## What is our expectation:

Being helpful partner for your requirement and Long-term relationship of cooperation

Pls don't hesitate to contact Vicky if any questions about your vehicle project.

Email: [overseasales-7@rcmccvt.com](mailto:overseasales-7@rcmccvt.com) Skype: [rcmccvt/sales7](https://www.skype.com/user/rcmccvt/sales7)

