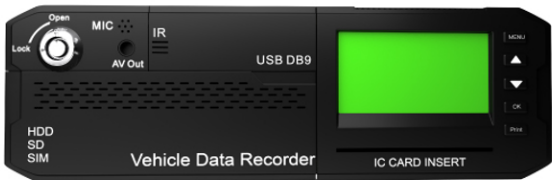


8CH AI Powered 4G Mobile DVR

- *8 channel 1080p video input, H.265 compression
- *Support 3G/4G/GPS/WIFI/G-SENSOR (optional)
- *Industrial Aluminum-cover, high anti-shock hard disk box



| | |
|------------------|-------|
| item | value |
| Operation system | Linux |

| | |
|---------------------|------------------------------------|
| CPU Speed | 1.2GHZ |
| NOR FLASH CAPACITY | 32MB NOR+128M NAND |
| RAM CAPACITY | 1G |
| Resolution | 1080P/960P/720P/D1/CIF |
| Compression mode | H.265, H.264 |
| Video input | 8 channels |
| Video output | CVBS or VGA |
| Communicate mode | 3g/4g/wifi optional |
| Audio Input | 8 channels |
| Audio output | 3 channels |
| AI function | ADAS/DSM/BSD/360 Aroundview system |
| API/SDK integration | Yes |
| GPS | Yes |
| Warranty | 12 months |

ADAS Front Active Safety Warning System

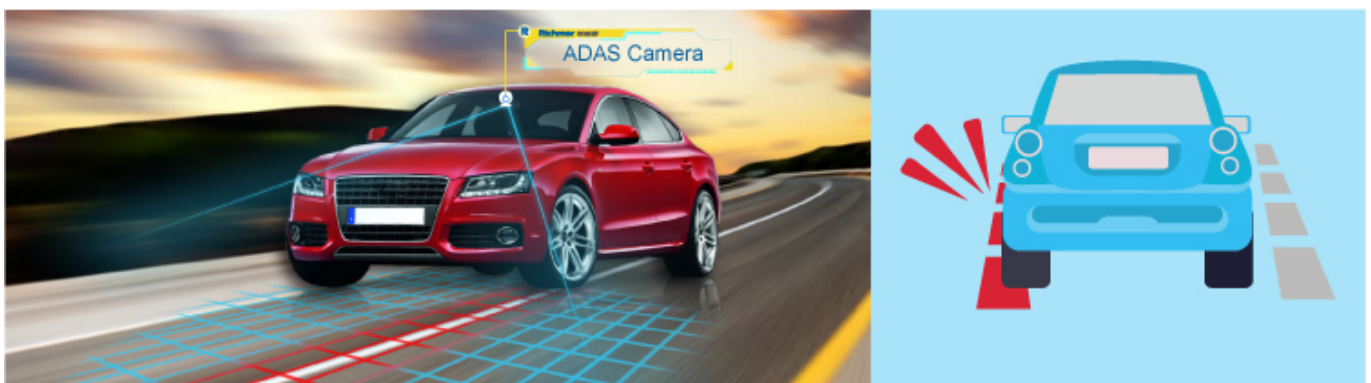
Front Vehicle Collision Warning System

When closely following the front vehicle, the front vehicle collision warning function will win precious reaction time for the driver, thus avoiding traffic accident.



Lane Departure Warning System

LDW(Lane Departure Warning). The position of the vehicle in the lane is monitored by the ADAS algorithm, and the driver is warned when the vehicle is above the line or is about to press the line, prevents traffic accident caused by lane departure.

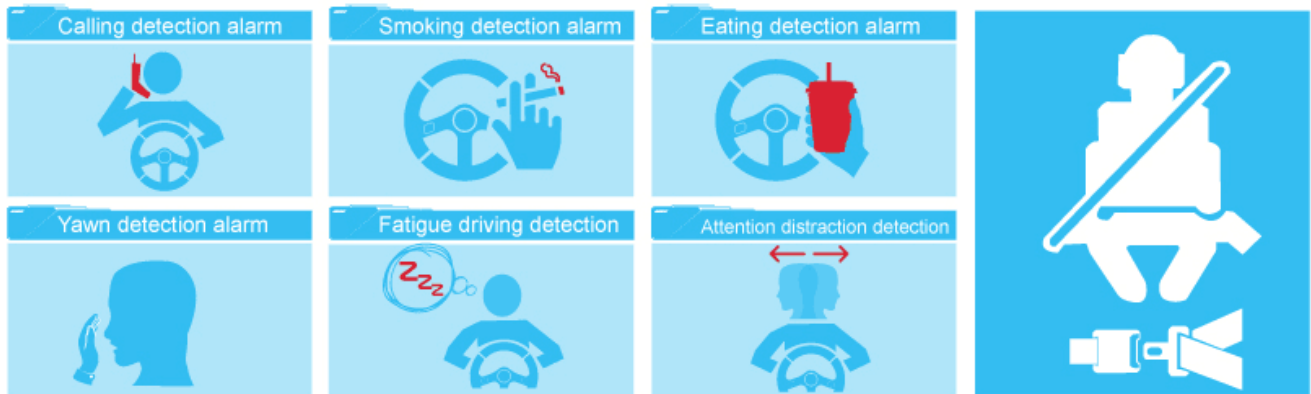


Fatigue driving detection

Use biostatistics to analyze. Prevent drivers from crossing guard posts and others using vehicles.

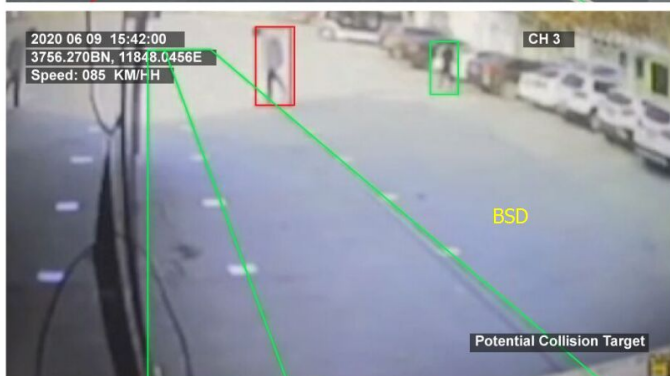
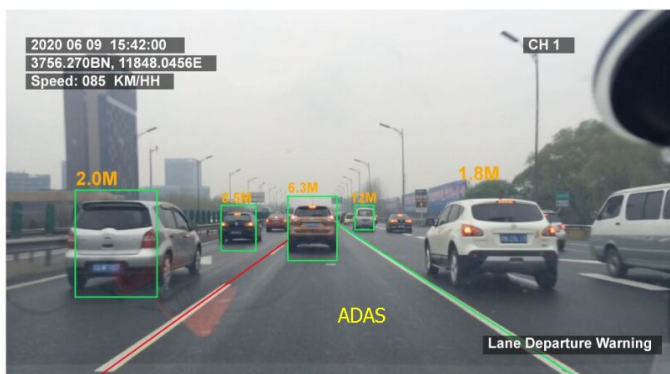
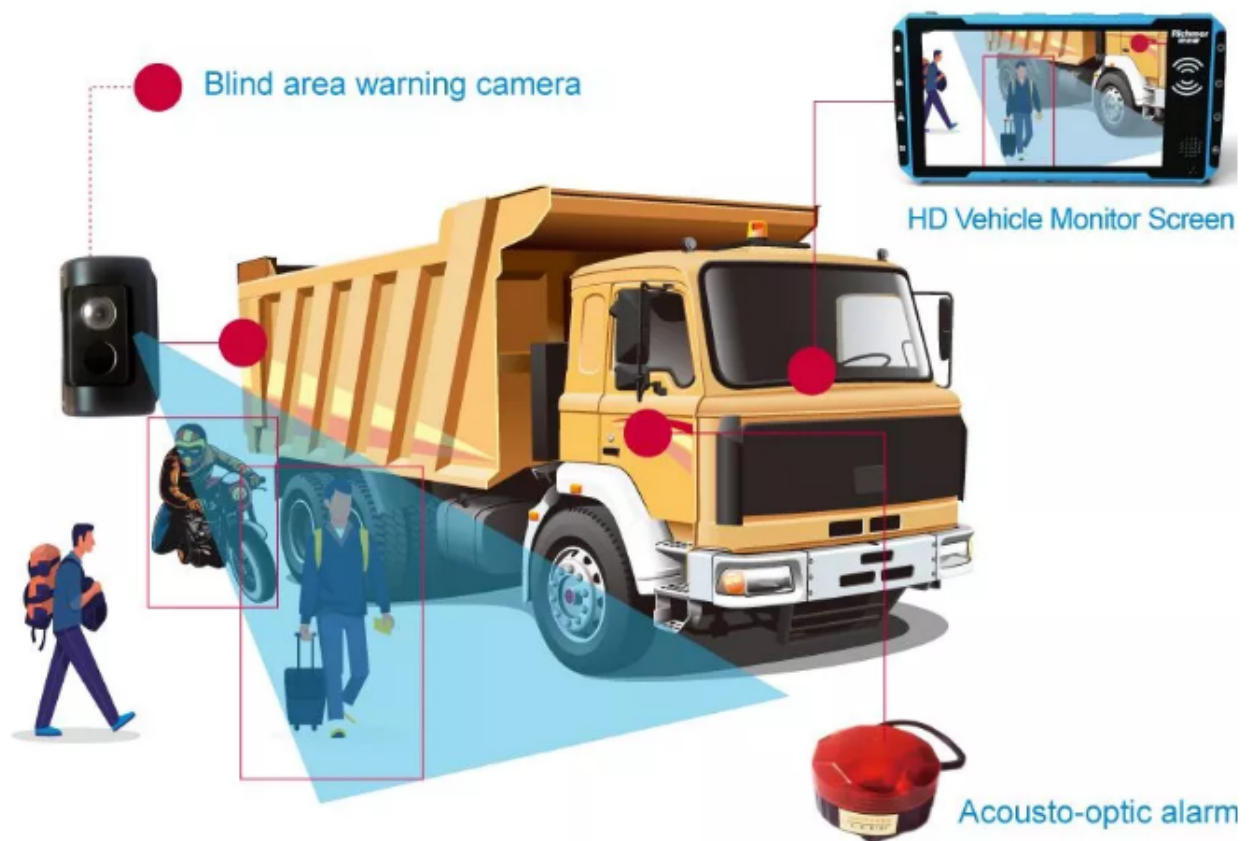
DSM Dangerous Driving Behavior Pre-warning System

Mainly detect unfavorable driving behaviors of the driver, such as driving distracted (looking around, smoking, making phone calls, yawning, etc) and over-speeding, bad driving behavior, etc. Once the system detecting the above behavior, there will be a sharp alarming to warn the driver to avoid accident.



BSD blind spot detection

Calculate and analyse the objects in the driving blind area. If it is person, motorcycle, bicycle, cars, it will give an alarm to those objects and the drivers to avoid collision. Compared with radar, it won't give alarm to tree or trash can, which highly improves the accuracy.



Company Profile

Shenzhen Richmor Technology Development Co., Ltd. is a TOP high-tech enterprise/ manufacturer specialized in digital and intelligent mobile video surveillance products, with rich experiences for developing, producing and selling over 13 years. Product Mainly

includes 3G 4G SD card/HDD mobile DVRs, ADAS DSM BSD AI mobile DVRs, MINI DVRs, HD vehicle camera etc. As a professional manufacturer, we oncentrate ourselves on providing customers with most advanced technologies and products with highest quality.

01. Our company



02. Office area

03. Service team



04. Factory Photos

Industrial Hisilicon 3520D image processor chip

Choose the electronic material of industrial grade specification, ensure the life of the component and the stability of the whole machine.

Adopt low heat resistance aluminum profile to make equipment shell, strong and durable, protect heat dissipation.

Temperature rating

-40°C 85°C

High quality image processing

