

5ch hdd mobile dvr support acc off delay record with 4g 3g gps platfrom



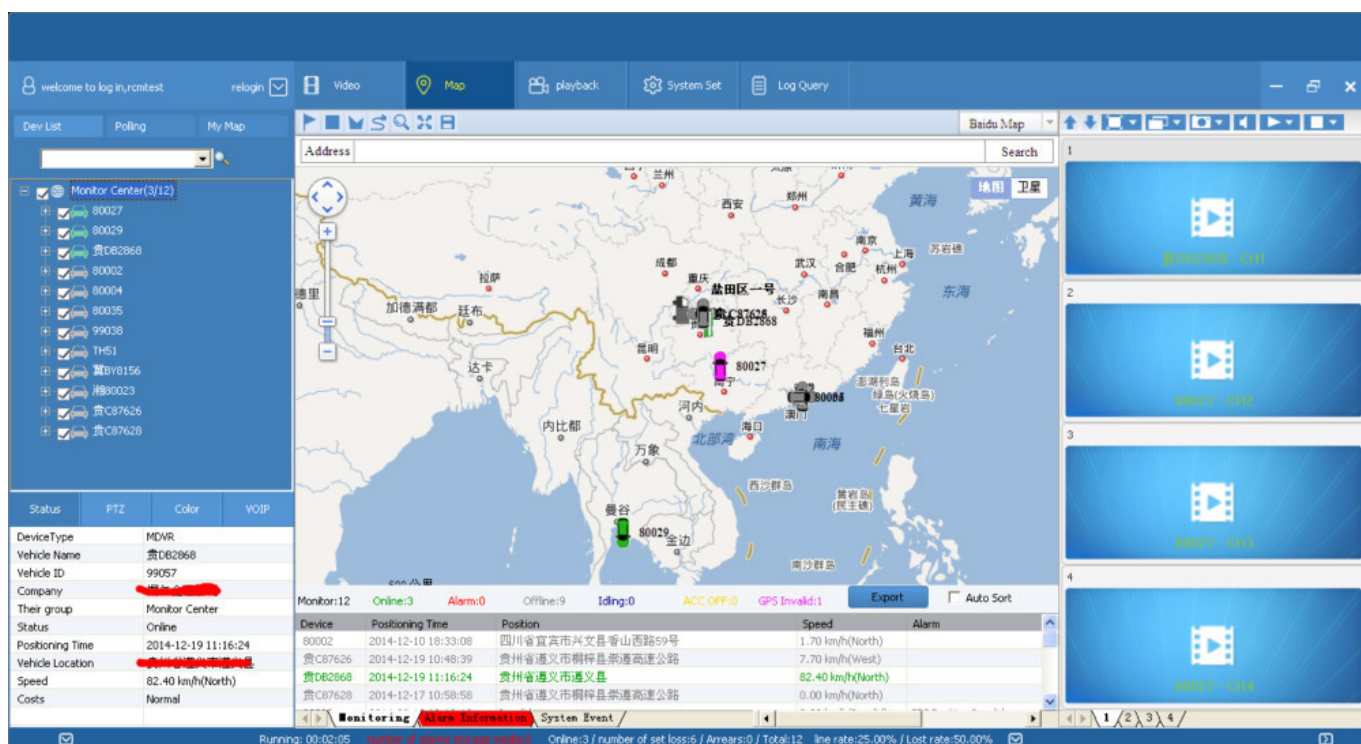
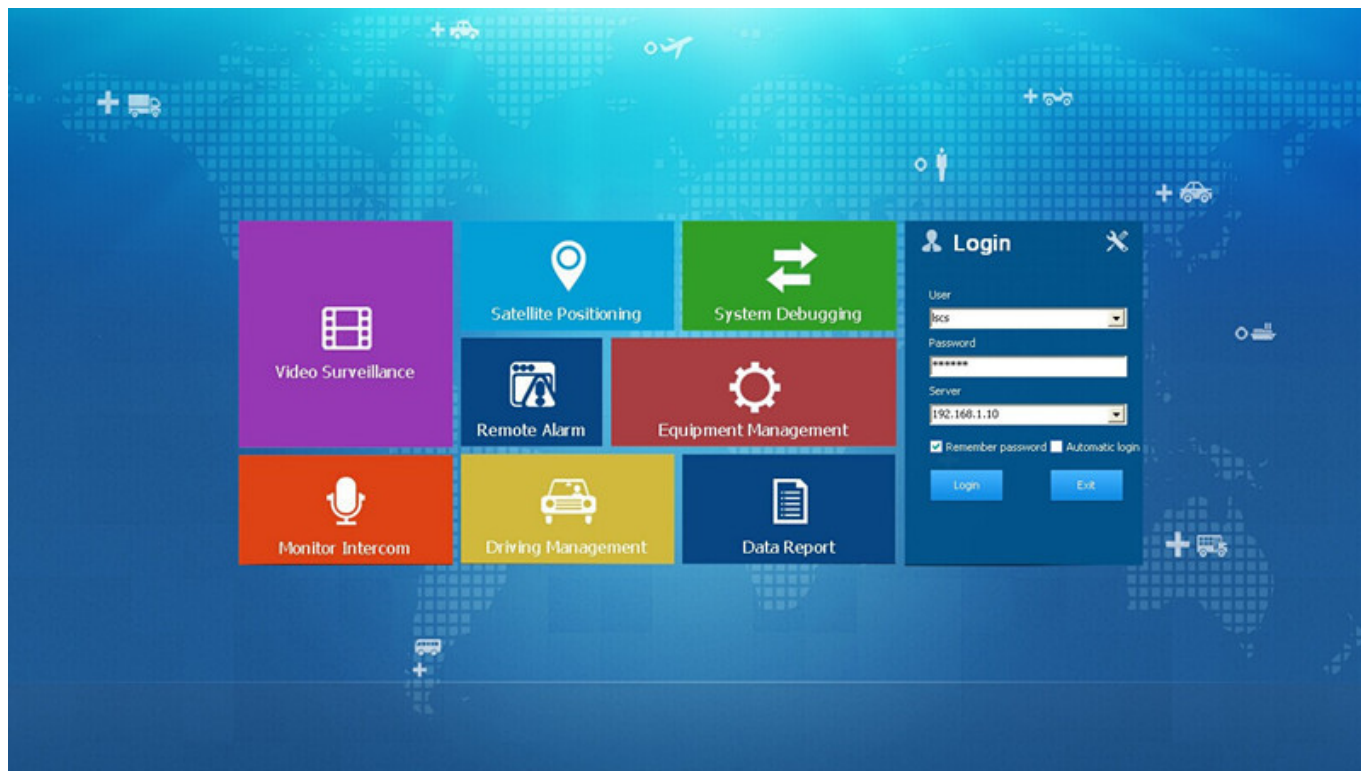
RCM-MDR7105
5CH MEGA PIXELS HD HDD MOBILE DVR
五路百万高清车载硬盘录像机

宽电源 无风机电 无风机电 PTZ 报警 VGA 多码流 减震 CAN CAN总线 ACC ACC OTA 车辆信息 摄像头 GPS/BD 3G/4G 拨打电话 语音对讲 WIFI 定时控制 手机监控 MSG

模拟 数字

The advertisement features a central image of the RCM-MDR7105 mobile DVR unit, a black rectangular device with a silver front panel and a blue LED display. Surrounding the unit are several circular inset images: a monitor displaying a multi-camera feed, a coiled black cable, a collection of various colored cables (red, yellow, green, blue, black), and a close-up of the device's rear panel showing multiple ports. A curved line connects these inset images, suggesting a system integration or data flow. The background is a solid blue color.

PC VIEWING CLIENT SOFTWARE



GPS Positioning & Overspeed Alarm

GPS data including Latitude, Longitude, and speed of vehicles will be saved along with video footages on to the SD card or hard disk, while playing the footages you can also check the the locations of your vehicles on map. Besides, alerts would be triggered while driving overspeed.



2TB + 128GB Large Capacity Storage

Up to 2TB hard disk & 128GB SD Card supported at the same time for saving video footages, once the disk is full, the DVR will overwrite the earlier files to make space for new files, which means you can have the DVR recording all the time to look after your vehicle.

Alarm I/O Alarm & Alarm Recording

The DVR supports 6 I/O inputs and 1 alarm output. You can set those Inputs to record vehicle bracking, turning left/ right, door opening and more. Also, they can be simply used as a Panic Button, or work with other external sensors to trigger recording or send message to the monitor center.



Main Features

*HIS Solution,H.264 Compression,support 5ch Million Pixels video surveillance, video recording and playback (4CH real-time 720p million Analog HD input and analog standard definition camera + 1CH 1080P network camera input);

*3CH video output (2CH CVBS video output,Support front and rear output; 1CH VGA output for optional)

*Exclusive pre-allocate DVR Special File System Technology,Solving repeatedly wipe cause file fragmentation, solving storage file system crash, data loss and cannot find storage media and file garbled , ensure the integrity of the data.

*6-36V wide voltage with low power consumption. Support Reverse Protection,over-voltage/over-current protection.Output max to 10Amps current, support 12V & 5V peripheral equipment

ower supply. Ultra low power design;

*Unique UPS Technology ensures the integrity of record when power failure occurs,even can last for 8-10s.

*HDD+SD Card Storage (Support 2.5" HDD, max 128G SD Card) protect from Shock & Dust damage;support USB port data backup and device update;

*Support 2 USD ports, data backup and equipment upgrades.

*Support 9CH alarm input (1CH Analog input + 8CH IO alarm input),2CH Independent alarm output.

*Support HDD heating functions,can work in harsh environment.

*Support GPS/BD/G-Sensor Extension module;

*Realize real-time monitor through 3G/4G;

*Support Broadcast/Intercom/Text sent etc;can add oil sensor/temperature sensor/POS/LED Advertisement Panel;

*Support OTG device upgrade automatically, , device can automatically upgrade version update, maintenance is more convenient

*Support IOS/Android Phone Remote monitor

*High reliability aviation connectors, high cost performance, stable and reliable.

Specifications

Item	Parameter	
OS	Linux	
Language	English/Chinese/Customized	
Video Compression	H.264 Compression	
OSD	Overlays information such as date time and vehicle ID	
GUI	Graphical User Interface	Setup system parameters with the remote control.

Video Record System	Video Input	4CH 720P Analog High Definition video+1CH 1080P digital video input ,aviation connector, 1.0Vp-p, 75Ω
	Video Output	2CH CVBS output+1CH VGA output for optional,1.0Vp-p, 75Ω,Support 1CH Full Screen,4CH Screen view
	Preview	Support 1 channel and 4 channels preview, 5 channels splice preview Support Manual/Alarm Trigger full screen preview
	Resolution	1080P/720P/D1/HD1/CIF, MAX:4 channels of 720P + 1080P / 4 channels of D1
	Image Quality	1-4 levels, 1 is the highest level. PAL: 100f/s , CCIR625 line,50field; NTSC: 120f/s, CCIR525 line,60field;
	Video Standard	CIF: 256Kbps ~ 1.5Mbps, 8 level video quality optional;
		HD1: 600Kbps ~ 2.5Mbps, 8 level video quality optional; D1: 800Kbps ~ 3Mbps, 8 level video quality optional; 720P: 4Mbps-6Mbps, multi level video quality optional
Audio	Record Mode	The default setting is auto recording after power on. Timed recording, alarm trigger recording and manual recording are supported.
	Audio Input	4CH Aviation Plug Input
	Audio Output	2CH,headphone connect at front panel, BNC Connect on Back panel
	Compression	G.726 compression, 8KB/s speed
Alarm Input	7CH Alarm Input,1CH AD Input,impulse speed input,Alarm Linkage	
Alarm Output	2CH Alarm Output,Support Light/Sound alarm sensor,Oil/Power cut off	
Interface	3CH RS232, POS/Fuel Sensor/LED Advertisement Connection	
	2CH 485 Interface,Connect PTZ Camera	
Wireless Transmission	Support Built in 3G transmission, WCDMA,CDMA2000,GPRS, EDGE; Built in 4G module optional, TDD-LTE, FDD-LTE	
GPS Position	Support Built GPS/BD Module	
Storage	HDD	Max 2.5" HDD
	SD Card	Max 128GB SD Card Mirror Recording Keep Data Safety
	Update	Support USB Updating, SD Card Updating,OTA Remote Updating
	File Format	H.264 Special FAT32 File System
	USB	USB Interface on Front Panel for data back up by U Disk,Hard Disk
Record Replay	Video Search	Search By Record Time/Record Type etc Max support 4CH Replay /Stop/Fast/Slow at same time
	Playback	Support forward and backward play at the speed of: x 2,x4,x8,x16.
Security	User/Admin 2 Level Different Password	

Optional Functions	Voice Call	Support voice call each other
	TTS Voice Broadcast	Support TTS voice broadcast function.
	Serial Expand	Support LED Advertisement Panel,Oil Sensor,POS,Bus Station Broadcaster,Car OBD,ect.external device
Voltage & Power	Power Management	Wide Voltage.Support Timed/Delay off/ over-load/Reversing connection/voltage shortage/short circuit etc.
	Input Voltage	DC:+6V - +36V
	Output Voltage	+12V,1.5A,+5V,1.5A
	Power	Working <5W
Working Environment	Temperature	-20°C - +70°C
	Humidity	20% - 80%
Others	Size	200 (D)* 187(W)* 62(H) mm
	Weight	1.90 Kg

Advantages

Product Features:

HIS Solution,H.264 Compression,Multiple Streams record ,5CH AHD Video input, 4CH real-time 720p million Analog HD input and analog standard definition camera + 1CH 1080P network camera input,

High quality real time recording, 1080P/720P/CIF/HD1/D1 Optional, quality adjustable;

Professional Car Power Design,6-36V wide voltage,Provide reverse voltage/over-load/short circuit protection, to meet kinds of car application;

Support 12VDC output voltage,power supply for Camera/Screen etc;
Max 2TB HDD + 128GB SD Card Mirror Recording,protect DVR from shock & Dust damage;
Watchdog abnormal restart function,protect SD Card and Record;

Exclusive Pre-allocated Vehicle File System protect data completeness ;

ACC Delay off,can set 24 hours;

Unique UPS Technology ensures the integrity of record when power failure occurs,even can last for 10-15s.

Auto Record/Manual Record/Alarm Record etc working mode to meet different requirements;
Show Car status/Plate/Driving Route/Low Speed/Over Speed information for convenient management;
Support GPS/BD,3G/4G Module Optional,WIFI extend;
Strong Network,device configure via IE Web,Support SMS Get device information and configure;
Support Monitoring,Two-way Intercom, PTZ, Alarm,Over-speed,Geo Fence etc through remote control platform;
8CH IO Alarm input(Door Open,Light,Turn direction,brake,reverse etc),can linkage kinds of alarm;

2CH Alarm Output,Support Light and Sound alarm sensor,Oil/Power cut off;
High level aviation interface,easily installation and better shockproof, more stable;

Support Local Auto-photo when alarm input.

High reliable aviation connectors input/output, easy installation,stronger anti-vibration.
Easily Smart GUI Interface, saving time in device setting;
Strong Stable Application,Support 3G/4G Real-time monitor, talk-back,playback,record,picture snap etc;
Updated through SD or OTA Remote Automatic updating,more stable and convenient;Support Phone Remote Monitor,Phone Calling etc;

Support PTZ/POS/Oil Sensor/LED Advertisement Panel etc;

Support Ministry of Transport Standard Agreement

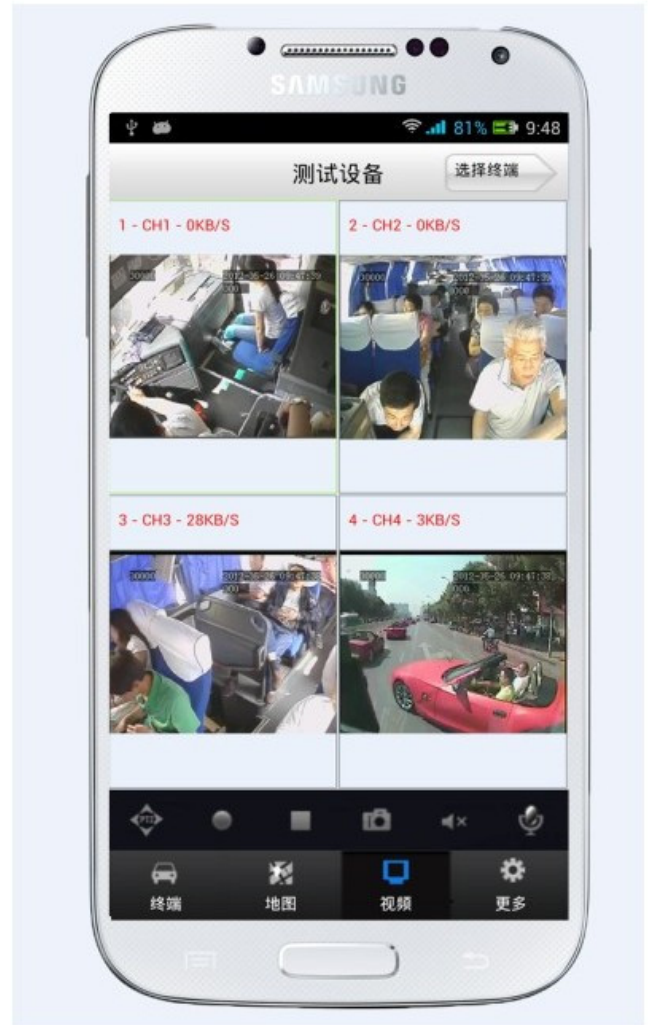
Be Customized according your request;

PC&Phone Monitoring

CMSV6 Interface

**hand CMSV6 In Mobile Phone
Have all in the palm of your**

Real-time monitoring via Mobile Phone
Support iPhone, Android, iPad system



Video & Audio Monitoring **Online Vehicle** **GPS**
Satellite Map **Video Storage**
PTZ control **Tracking Display** **Picture**
Snapshot **Voice Intercom**

FQA

Q: During playback, the map doesn't show?

A: Possible reasons are as follows;

1.Net cable did not connect to PC;

2.Net works, but the computer can not get to the Internet;

Q: When SD card and HDD records, How is the record coverage?

A: SD card and HDD will record circularly for each other. When they are full, they

will delete the original video records respectively.

Q: The device was opened, HDD was installed, but the device can not record successful.

A: 1. Check the HDD/SD Card was formatted or not, the unformatted HH/SD Card can not be used. Enter into the Main Menu - System Setup - Formatting the new installed HDD/SD Card.

2. If the recording channel is closed, if set the timing recording, it can not recording when it beyond the period of timing recording.

3. If the HDD is connect well, if the HDD/SD light is on.



Richmor Brand Package



Standard Package



MoneyGram

PayPal

HSBC



Richmor

CPSE2012 in Shenzhen



CPSE2013

10.29-10.31

4 Booth we have

Welcome you !!!



CPSE2012-- Guangdong TV Report-Shenzhen Richmor



Certifications

VERIFICATION OF CONFORMITY		
	<h2>Verification of Conformity</h2> <p>Reference No.: LCC030409000</p>	
	Responsible Party	Shenzhen Richstar Technology Development Co., LTD.
	Address	2F No.36 West Longgang Road, Longgang New District, Shenzhen, China
	Product	Camera
Model No.	RCM-IPC101, RCM-IPC210, RCM-IPC310, RCM-IPC110, RCM-IPC210, RCM-IPC310, RCM-IPC410, RCM-IPC510, RCM-IPC610, RCM-IPC710, RCM-IPC810, RCM-IPC910, RCM-IPC1010, RCM-IPC1110, RCM-IPC1210, RCM-IPC1310, RCM-IPC1410, RCM-IPC1510, RCM-IPC1610, RCM-IPC1710, RCM-IPC1810, RCM-IPC1910, RCM-IPC2010, RCM-IPC2110, RCM-IPC2210, RCM-IPC2310, RCM-IPC2410, RCM-IPC2510, RCM-IPC2610, RCM-IPC2710, RCM-IPC2810, RCM-IPC2910, RCM-IPC3010, RCM-IPC3110, RCM-IPC3210, RCM-IPC3310, RCM-IPC3410, RCM-IPC3510, RCM-IPC3610, RCM-IPC3710, RCM-IPC3810, RCM-IPC3910, RCM-IPC4010, RCM-IPC4110, RCM-IPC4210, RCM-IPC4310, RCM-IPC4410, RCM-IPC4510, RCM-IPC4610, RCM-IPC4710, RCM-IPC4810, RCM-IPC4910, RCM-IPC5010, RCM-IPC5110, RCM-IPC5210, RCM-IPC5310, RCM-IPC5410, RCM-IPC5510, RCM-IPC5610, RCM-IPC5710, RCM-IPC5810, RCM-IPC5910, RCM-IPC6010, RCM-IPC6110, RCM-IPC6210, RCM-IPC6310, RCM-IPC6410, RCM-IPC6510, RCM-IPC6610, RCM-IPC6710, RCM-IPC6810, RCM-IPC6910, RCM-IPC7010, RCM-IPC7110, RCM-IPC7210, RCM-IPC7310, RCM-IPC7410, RCM-IPC7510, RCM-IPC7610, RCM-IPC7710, RCM-IPC7810, RCM-IPC7910, RCM-IPC8010, RCM-IPC8110, RCM-IPC8210, RCM-IPC8310, RCM-IPC8410, RCM-IPC8510, RCM-IPC8610, RCM-IPC8710, RCM-IPC8810, RCM-IPC8910, RCM-IPC9010, RCM-IPC9110, RCM-IPC9210, RCM-IPC9310, RCM-IPC9410, RCM-IPC9510, RCM-IPC9610, RCM-IPC9710, RCM-IPC9810, RCM-IPC9910, RCM-IPC10010, RCM-IPC10110, RCM-IPC10210, RCM-IPC10310, RCM-IPC10410, RCM-IPC10510, RCM-IPC10610, RCM-IPC10710, RCM-IPC10810, RCM-IPC10910, RCM-IPC11010, RCM-IPC11110, RCM-IPC11210, RCM-IPC11310, RCM-IPC11410, RCM-IPC11510, RCM-IPC11610, RCM-IPC11710, RCM-IPC11810, RCM-IPC11910, RCM-IPC12010, RCM-IPC12110, RCM-IPC12210, RCM-IPC12310, RCM-IPC12410, RCM-IPC12510, RCM-IPC12610, RCM-IPC12710, RCM-IPC12810, RCM-IPC12910, RCM-IPC13010, RCM-IPC13110, RCM-IPC13210, RCM-IPC13310, RCM-IPC13410, RCM-IPC13510, RCM-IPC13610, RCM-IPC13710, RCM-IPC13810, RCM-IPC13910, RCM-IPC14010, RCM-IPC14110, RCM-IPC14210, RCM-IPC14310, RCM-IPC14410, RCM-IPC14510, RCM-IPC14610, RCM-IPC14710, RCM-IPC14810, RCM-IPC14910, RCM-IPC15010, RCM-IPC15110, RCM-IPC15210, RCM-IPC15310, RCM-IPC15410, RCM-IPC15510, RCM-IPC15610, RCM-IPC15710, RCM-IPC15810, RCM-IPC15910, RCM-IPC16010, RCM-IPC16110, RCM-IPC16210, RCM-IPC16310, RCM-IPC16410, RCM-IPC16510, RCM-IPC16610, RCM-IPC16710, RCM-IPC16810, RCM-IPC16910, RCM-IPC17010, RCM-IPC17110, RCM-IPC17210, RCM-IPC17310, RCM-IPC17410, RCM-IPC17510, RCM-IPC17610, RCM-IPC17710, RCM-IPC17810, RCM-IPC17910, RCM-IPC18010, RCM-IPC18110, RCM-IPC18210, RCM-IPC18310, RCM-IPC18410, RCM-IPC18510, RCM-IPC18610, RCM-IPC18710, RCM-IPC18810, RCM-IPC18910, RCM-IPC19010, RCM-IPC19110, RCM-IPC19210, RCM-IPC19310, RCM-IPC19410, RCM-IPC19510, RCM-IPC19610, RCM-IPC19710, RCM-IPC19810, RCM-IPC19910, RCM-IPC20010, RCM-IPC20110, RCM-IPC20210, RCM-IPC20310, RCM-IPC20410, RCM-IPC20510, RCM-IPC20610, RCM-IPC20710, RCM-IPC20810, RCM-IPC20910, RCM-IPC21010, RCM-IPC21110, RCM-IPC21210, RCM-IPC21310, RCM-IPC21410, RCM-IPC21510, RCM-IPC21610, RCM-IPC21710, RCM-IPC21810, RCM-IPC21910, RCM-IPC22010, RCM-IPC22110, RCM-IPC22210, RCM-IPC22310, RCM-IPC22410, RCM-IPC22510, RCM-IPC22610, RCM-IPC22710, RCM-IPC22810, RCM-IPC22910, RCM-IPC23010, RCM-IPC23110, RCM-IPC23210, RCM-IPC23310, RCM-IPC23410, RCM-IPC23510, RCM-IPC23610, RCM-IPC23710, RCM-IPC23810, RCM-IPC23910, RCM-IPC24010, RCM-IPC24110, RCM-IPC24210, RCM-IPC24310, RCM-IPC24410, RCM-IPC24510, RCM-IPC24610, RCM-IPC24710, RCM-IPC24810, RCM-IPC24910, RCM-IPC25010, RCM-IPC25110, RCM-IPC25210, RCM-IPC25310, RCM-IPC25410, RCM-IPC25510, RCM-IPC25610, RCM-IPC25710, RCM-IPC25810, RCM-IPC25910, RCM-IPC26010, RCM-IPC26110, RCM-IPC26210, RCM-IPC26310, RCM-IPC26410, RCM-IPC26510, RCM-IPC26610, RCM-IPC26710, RCM-IPC26810, RCM-IPC26910, RCM-IPC27010, RCM-IPC27110, RCM-IPC27210, RCM-IPC27310, RCM-IPC27410, RCM-IPC27510, RCM-IPC27610, RCM-IPC27710, RCM-IPC27810, RCM-IPC27910, RCM-IPC28010, RCM-IPC28110, RCM-IPC28210, RCM-IPC28310, RCM-IPC28410, RCM-IPC28510, RCM-IPC28610, RCM-IPC28710, RCM-IPC28810, RCM-IPC28910, RCM-IPC29010, RCM-IPC29110, RCM-IPC29210, RCM-IPC29310, RCM-IPC29410, RCM-IPC29510, RCM-IPC29610, RCM-IPC29710, RCM-IPC29810, RCM-IPC29910, RCM-IPC30010, RCM-IPC30110, RCM-IPC30210, RCM-IPC30310, RCM-IPC30410, RCM-IPC30510, RCM-IPC30610, RCM-IPC30710, RCM-IPC30810, RCM-IPC30910, RCM-IPC31010, RCM-IPC31110, RCM-IPC31210, RCM-IPC31310, RCM-IPC31410, RCM-IPC31510, RCM-IPC31610, RCM-IPC31710, RCM-IPC31810, RCM-IPC31910, RCM-IPC32010, RCM-IPC32110, RCM-IPC32210, RCM-IPC32310, RCM-IPC32410, RCM-IPC32510, RCM-IPC32610, RCM-IPC32710, RCM-IPC32810, RCM-IPC32910, RCM-IPC33010, RCM-IPC33110, RCM-IPC33210, RCM-IPC33310, RCM-IPC33410, RCM-IPC33510, RCM-IPC33610, RCM-IPC33710, RCM-IPC33810, RCM-IPC33910, RCM-IPC34010, RCM-IPC34110, RCM-IPC34210, RCM-IPC34310, RCM-IPC34410, RCM-IPC34510, RCM-IPC34610, RCM-IPC34710, RCM-IPC34810, RCM-IPC34910, RCM-IPC35010, RCM-IPC35110, RCM-IPC35210, RCM-IPC35310, RCM-IPC35410, RCM-IPC35510, RCM-IPC35610, RCM-IPC35710, RCM-IPC35810, RCM-IPC35910, RCM-IPC36010, RCM-IPC36110, RCM-IPC36210, RCM-IPC36310, RCM-IPC36410, RCM-IPC36510, RCM-IPC36610, RCM-IPC36710, RCM-IPC36810, RCM-IPC36910, RCM-IPC37010, RCM-IPC37110, RCM-IPC37210, RCM-IPC37310, RCM-IPC37410, RCM-IPC37510, RCM-IPC37610, RCM-IPC37710, RCM-IPC37810, RCM-IPC37910, RCM-IPC38010, RCM-IPC38110, RCM-IPC38210, RCM-IPC38310, RCM-IPC38410, RCM-IPC38510, RCM-IPC38610, RCM-IPC38710, RCM-IPC38810, RCM-IPC38910, RCM-IPC39010, RCM-IPC3911	

Verification of Conformity	
Reference No.: L13184-030779	
Responsible Party	Shenzhen Xinyuan Technology Development Co., Ltd.
Address	#F No.41 West Longgang Road, Longgang New District, Shenzhen, China
Product	Mobile PDA
Model No.	RICM-ME900L, RICM-ME900S, RICM-ME900L, RICM-ME900S, RICM-ME900T, RICM-SF900, RICM-SF900
Trade Mark	XinYuan
Standards	FCC CFR 47 PART 15 Subpart D, IEEE 802.11a, 802.11g
Important note: This device is in conformance with Part 15 of the FCC Rules and Regulations for radio frequency devices. Operation of the product is subject to the following two conditions: (1) This device may cause harmful interference, and (2) this device must accept any interference received, including interference that may cause undesired operation. We intend to conform to the applicable FCC Rules and Regulations. The method of testing was in accordance to the most accurate measurement standards possible, and that all necessary steps have been undertaken to ensure that all production units of the same equipment will continue to comply with the Federal Communications Commission's requirements.	
  Manager April 16, 2013	
Shenzhen LCC Compliance Testing Laboratory Ltd. #F, Xingyuan Industrial Park, Tongxin Street, Baoan District, Baoan City (Shenzhen), Guangdong, China Tel: (86)-755-8208-1280 Fax: (86)-755-8208-1281 Http://www.LCC-test.com Email: info@lcc-test.com	

 CERTIFICATE of Conformity Reference No.: CCC030100129475	
Applicant:	Shenzhen Riverstar Technology Development Co., LTD.
Address:	2/F No.16 West Longgang Road, Longgang New District, Shenzhen, China
Product:	Mobile DVR
Model(s):	RCM-M0702Z, RCM-M0703Z, RCM-M0704Z, RCM-M0705Z, RCM-M0706Z, RCM-M0707Z, RCM-M0708Z, RCM-M0709Z, RCM-M0710Z
Trade Mark:	Riverstar

The examined products have been tested by us with the latest standards and found in compliance with the following European Directives:

The EMC Directive 2004/108/EC
EN 60950: 2012, EN 60950: 2015

The tests were performed in normal operation mode. The test results apply only to the particular sample tested and to the specific test carried out. They constitute specific attestation to the sample investigated in our test reference number only.

The CE markings as shown below can be affixed on the product after presentation of necessary technical documentation.

Other relevant Directives have to be observed.





 Date 10. 2015

Shenzhen CCC Compliance Testing Laboratories Ltd.
 2/F, Guangdong Science Park, Tongde Road, Xixun New District, Shenzhen, Guangdong, China
 Tel: 86-755-83671222 Fax: 86-755-83671228
 Http://www.ccc.com.cn Email: info@ccc.com.cn

CERTIFICATE OF CONFORMITY		
	CERTIFICATE of Conformity Reference No.: LCB-04-000875	
	Applicant	Shenzhen Winmax Technology Development Co., LTD.
	Address	2F No.44 West Longgang Road, Longgang New District, Shenzhen, China
	Product	Camera
Model(s)	NON-IPCE15, NON-IPCE16, NON-IPCE17, NON-IPCE18, NON-IPCE19, NON-IPCE20, NON-IPCE21, NON-IPCE22, NON-IPCE23, NON-IPCE24, NON-IPCE25, NON-IPCE26, NON-IPCE27, NON-IPCE28, NON-IPCE29, NON-IPCE30, NON-IPCE31, NON-IPCE32, NON-IPCE33, NON-IPCE34, NON-IPCE35, NON-IPCE36, NON-IPCE37, NON-IPCE38, NON-IPCE39, NON-IPCE40, NON-IPCE41, NON-IPCE42, NON-IPCE43, NON-IPCE44, NON-IPCE45, NON-IPCE46, NON-IPCE47, NON-IPCE48, NON-IPCE49, NON-IPCE50, NON-IPCE51, NON-IPCE52, NON-IPCE53, NON-IPCE54, NON-IPCE55, NON-IPCE56, NON-IPCE57, NON-IPCE58, NON-IPCE59, NON-IPCE60, NON-IPCE61, NON-IPCE62, NON-IPCE63, NON-IPCE64, NON-IPCE65, NON-IPCE66, NON-IPCE67, NON-IPCE68, NON-IPCE69, NON-IPCE70, NON-IPCE71, NON-IPCE72, NON-IPCE73, NON-IPCE74, NON-IPCE75, NON-IPCE76, NON-IPCE77, NON-IPCE78, NON-IPCE79, NON-IPCE80, NON-IPCE81, NON-IPCE82, NON-IPCE83, NON-IPCE84, NON-IPCE85, NON-IPCE86, NON-IPCE87, NON-IPCE88, NON-IPCE89, NON-IPCE90, NON-IPCE91, NON-IPCE92, NON-IPCE93, NON-IPCE94, NON-IPCE95, NON-IPCE96, NON-IPCE97, NON-IPCE98, NON-IPCE99, NON-IPCE100, NON-IPCE101, NON-IPCE102, NON-IPCE103, NON-IPCE104, NON-IPCE105, NON-IPCE106, NON-IPCE107, NON-IPCE108, NON-IPCE109, NON-IPCE110, NON-IPCE111, NON-IPCE112, NON-IPCE113, NON-IPCE114, NON-IPCE115, NON-IPCE116, NON-IPCE117, NON-IPCE118, NON-IPCE119, NON-IPCE120, NON-IPCE121, NON-IPCE122, NON-IPCE123, NON-IPCE124, NON-IPCE125, NON-IPCE126, NON-IPCE127, NON-IPCE128, NON-IPCE129, NON-IPCE130, NON-IPCE131, NON-IPCE132, NON-IPCE133, NON-IPCE134, NON-IPCE135, NON-IPCE136, NON-IPCE137, NON-IPCE138, NON-IPCE139, NON-IPCE140, NON-IPCE141, NON-IPCE142, NON-IPCE143, NON-IPCE144, NON-IPCE145, NON-IPCE146, NON-IPCE147, NON-IPCE148, NON-IPCE149, NON-IPCE150, NON-IPCE151, NON-IPCE152, NON-IPCE153, NON-IPCE154, NON-IPCE155, NON-IPCE156, NON-IPCE157, NON-IPCE158, NON-IPCE159, NON-IPCE160, NON-IPCE161, NON-IPCE162, NON-IPCE163, NON-IPCE164, NON-IPCE165, NON-IPCE166, NON-IPCE167, NON-IPCE168, NON-IPCE169, NON-IPCE170, NON-IPCE171, NON-IPCE172, NON-IPCE173, NON-IPCE174, NON-IPCE175, NON-IPCE176, NON-IPCE177, NON-IPCE178, NON-IPCE179, NON-IPCE180, NON-IPCE181, NON-IPCE182, NON-IPCE183, NON-IPCE184, NON-IPCE185, NON-IPCE186, NON-IPCE187, NON-IPCE188, NON-IPCE189, NON-IPCE190, NON-IPCE191, NON-IPCE192, NON-IPCE193, NON-IPCE194, NON-IPCE195, NON-IPCE196, NON-IPCE197, NON-IPCE198, NON-IPCE199, NON-IPCE200, NON-IPCE201, NON-IPCE202, NON-IPCE203, NON-IPCE204, NON-IPCE205, NON-IPCE206, NON-IPCE207, NON-IPCE208, NON-IPCE209, NON-IPCE210, NON-IPCE211, NON-IPCE212, NON-IPCE213, NON-IPCE214, NON-IPCE215, NON-IPCE216, NON-IPCE217, NON-IPCE218, NON-IPCE219, NON-IPCE220, NON-IPCE221, NON-IPCE222, NON-IPCE223, NON-IPCE224, NON-IPCE225, NON-IPCE226, NON-IPCE227, NON-IPCE228, NON-IPCE229, NON-IPCE230, NON-IPCE231, NON-IPCE232, NON-IPCE233, NON-IPCE234, NON-IPCE235, NON-IPCE236, NON-IPCE237, NON-IPCE238, NON-IPCE239, NON-IPCE240, NON-IPCE241, NON-IPCE242, NON-IPCE243, NON-IPCE244, NON-IPCE245, NON-IPCE246, NON-IPCE247, NON-IPCE248, NON-IPCE249, NON-IPCE250, NON-IPCE251, NON-IPCE252, NON-IPCE253, NON-IPCE254, NON-IPCE255, NON-IPCE256, NON-IPCE257, NON-IPCE258, NON-IPCE259, NON-IPCE260, NON-IPCE261, NON-IPCE262, NON-IPCE263, NON-IPCE264, NON-IPCE265, NON-IPCE266, NON-IPCE267, NON-IPCE268, NON-IPCE269, NON-IPCE270, NON-IPCE271, NON-IPCE272, NON-IPCE273, NON-IPCE274, NON-IPCE275, NON-IPCE276, NON-IPCE277, NON-IPCE278, NON-IPCE279, NON-IPCE280, NON-IPCE281, NON-IPCE282, NON-IPCE283, NON-IPCE284, NON-IPCE285, NON-IPCE286, NON-IPCE287, NON-IPCE288, NON-IPCE289, NON-IPCE290, NON-IPCE291, NON-IPCE292, NON-IPCE293, NON-IPCE294, NON-IPCE295, NON-IPCE296, NON-IPCE297, NON-IPCE298, NON-IPCE299, NON-IPCE300, NON-IPCE301, NON-IPCE302, NON-IPCE303, NON-IPCE304, NON-IPCE305, NON-IPCE306, NON-IPCE307, NON-IPCE308, NON-IPCE309, NON-IPCE310, NON-IPCE311, NON-IPCE312, NON-IPCE313, NON-IPCE314, NON-IPCE315, NON-IPCE316, NON-IPCE317, NON-IPCE318, NON-IPCE319, NON-IPCE320, NON-IPCE321, NON-IPCE322, NON-IPCE323, NON-IPCE324, NON-IPCE325, NON-IPCE326, NON-IPCE327, NON-IPCE328, NON-IPCE329, NON-IPCE330, NON-IPCE331, NON-IPCE332, NON-IPCE333, NON-IPCE334, NON-IPCE335, NON-IPCE336, NON-IPCE337, NON-IPCE338, NON-IPCE339, NON-IPCE340, NON-IPCE341, NON-IPCE342, NON-IPCE343, NON-IPCE344, NON-IPCE345, NON-IPCE346, NON-IPCE347, NON-IPCE348, NON-IPCE349, NON-IPCE350, NON-IPCE351, NON-IPCE352, NON-IPCE353, NON-IPCE354, NON-IPCE355, NON-IPCE356, NON-IPCE357, NON-IPCE358, NON-IPCE359, NON-IPCE360, NON-IPCE361, NON-IPCE362, NON-IPCE363, NON-IPCE364, NON-IPCE365, NON-IPCE366, NON-IPCE367, NON-IPCE368, NON-IPCE369, NON-IPCE370, NON-IPCE371, NON-IPCE372, NON-IPCE373, NON-IPCE374, NON-IPCE375, NON-IPCE376, NON-IPCE377, NON-IPCE378, NON-IPCE379, NON-IPCE380, NON-IPCE381, NON-IPCE382, NON-IPCE383, NON-IPCE384, NON-IPCE385, NON-IPCE386, NON-IPCE387, NON-IPCE388, NON-IPCE389, NON-IPCE390, NON-IPCE391, NON-IPCE392, NON-IPCE393, NON-IPCE394, NON-IPCE395, NON-IPCE396, NON-IPCE397, NON-IPCE398, NON-IPCE399, NON-IPCE400, NON-IPCE401, NON-IPCE402, NON-IPCE403, NON-IPCE404, NON-IPCE405, NON-IPCE406, NON-IPCE407, NON-IPCE408, NON-IPCE409, NON-IPCE410, NON-IPCE411, NON-IPCE412, NON-IPCE413, NON-IPCE414, NON-IPCE415, NON-IPCE416, NON-IPCE417, NON-IPCE418, NON-IPCE419, NON-IPCE420, NON-IPCE421, NON-IPCE422, NON-IPCE423, NON-IPCE424, NON-IPCE425, NON-IPCE426, NON-IPCE427, NON-IPCE428, NON-IPCE429, NON-IPCE430, NON-IPCE431, NON-IPCE432, NON-IPCE433, NON-IPCE434, NON-IPCE435, NON-IPCE436, NON-IPCE437, NON-IPCE438, NON-IPCE439, NON-IPCE440, NON-IPCE441, NON-IPCE442, NON-IPCE443, NON-IPCE444, NON-IPCE445, NON-IPCE446, NON-IPCE447, NON-IPCE448, NON-IPCE449, NON-IPCE450, NON-IPCE451, NON-IPCE452, NON-IPCE453, NON-IPCE454, NON-IPCE455, NON-IPCE456, NON-IPCE457, NON-IPCE458, NON-IPCE459, NON-IPCE460, NON-IPCE461, NON-IPCE462, NON-IPCE463, NON-IPCE464, NON-IPCE465, NON-IPCE466, NON-IPCE467, NON-IPCE468, NON-IPCE469, NON-IPCE470, NON-IPCE471, NON-IPCE472, NON-IPCE473, NON-IPCE474, NON-IPCE475, NON-IPCE476, NON-IPCE477, NON-IPCE478, NON-IPCE479, NON-IPCE480, NON-IPCE481, NON-IPCE482, NON-IPCE483, NON-IPCE484, NON-IPCE485, NON-IPCE486, NON-IPCE487, NON-IPCE488, NON-IPCE489, NON-IPCE490, NON-	

CERTIFICATE OF CONFORMITY	 CERTIFICATE of Conformity 2013/0001 Restriction of Hazardous Substance Reference No.: L-CH-3491000019
	When tested as requested, the submitted sample complies with the requirements of Commission Decision of 21 July 2007 amending Directive 2011/65/EU.
Applicant:	<input type="checkbox"/> Shenzhen Winchance Technology Development Co., LTD.
Address:	<input checked="" type="checkbox"/> SF Yuchang West Longgang Road, Longhang New District, Shenzhen, China
Trade Mark:	<input type="checkbox"/> None
Product:	<input type="checkbox"/> Chipmunk
Material(s):	<input checked="" type="checkbox"/> ROHS-WPCV, ROHS-WPVC, ROHS-LPVCB, ROHS-WPVCB, ROHS-WAPAL, ROHS-WPPSP, ROHS-DGL, ROHS-HAL, ROHS-WAL, ROHS-DGSL, ROHS-DGWL, ROHS-BGML, ROHS-ZGML, ROHS-BZL, ROHS-WPBLD, ROHS-GGWBVL, ROHS-SGGWBVL
This test report is issued by the Company subject to its General Conditions of Service printed overleaf. Attention is drawn to the limitations of liability, indemnification and jurisdictional matters defined therein. This results sheet is in full test report refers only to the samples tested unless otherwise stated. This Test Report cannot be reproduced, except in full, without prior written permission of the Company.	
Other relevant directives have to be observed:	
<h1>RoHS</h1>	
 Date: 10. 2013 Signature: _____ Shenzhen CCS Compliance Testing Laboratory Ltd. 1/F, Songman Industrial Park, Yongda Road, Xixun St., Bao'an District, Shenzhen, Guangdong, China Tel: +86-(755)-43040160 Fax: +86-(755)-43040152 Email: customer@sgs-cert.com.cn http://www.ccs-sgslab.com	

CERTIFICATE OF CONFORMITY



CERTIFICATE of Conformity

ISO 19001:2015 Accredited of Inspection Services

Reference No.: L101704-030817A

When tested as specified, the submitted sample conforms with the requirements of Commission Decision of 21 July 2011 amending Directive 2011/65/EU

Applicant	Shenzhen Redstar Technology Development Co., Ltd.
Address	2F No.34 West Longgang Road, Longgang New District, Shenzhen, China
Trade Mark	Redstar
Product	Monitor (TV)
Model(s)	RCOM-MC0000L, RCOM-MC0000L, RCOM-MC0000L, RCOM-MC0000L, RCOM-MC0000L, RCOM-MC0000L, RCOM-MC0000L

This test report is issued by the Company subject to its General Conditions of Service printed hereafter. Attention is drawn to the Implications of liability, identification and preconditions listed hereafter. The results shown in this test report refer only to the samples tested under circumstances stated. Test Report cannot be reproduced, except in full, without prior written permission of the Company.

Other relevant documents have to be obtained.

RoHS



John Gao
Manager
April 16, 2017

Shenzhen LCB Compliance Testing Laboratory Ltd
 17, Tongxin Industrial Park, Tongxin Road, Bao'an Dist., Guang Dong, Shenzhen,
 Guangdong
 Tel: 0086755-83299132
<http://www.lcb.com.cn>

Fax: 0086755-83299132
 Email: admin@lcb.com.cn

Skype:rcmcctvsales2