

5CH Million Pixels mobile dvr vehicle dvr mdvr support 1CH IPC 4CH AHD camera with realtime monitor 3G

RCM-MDR7105

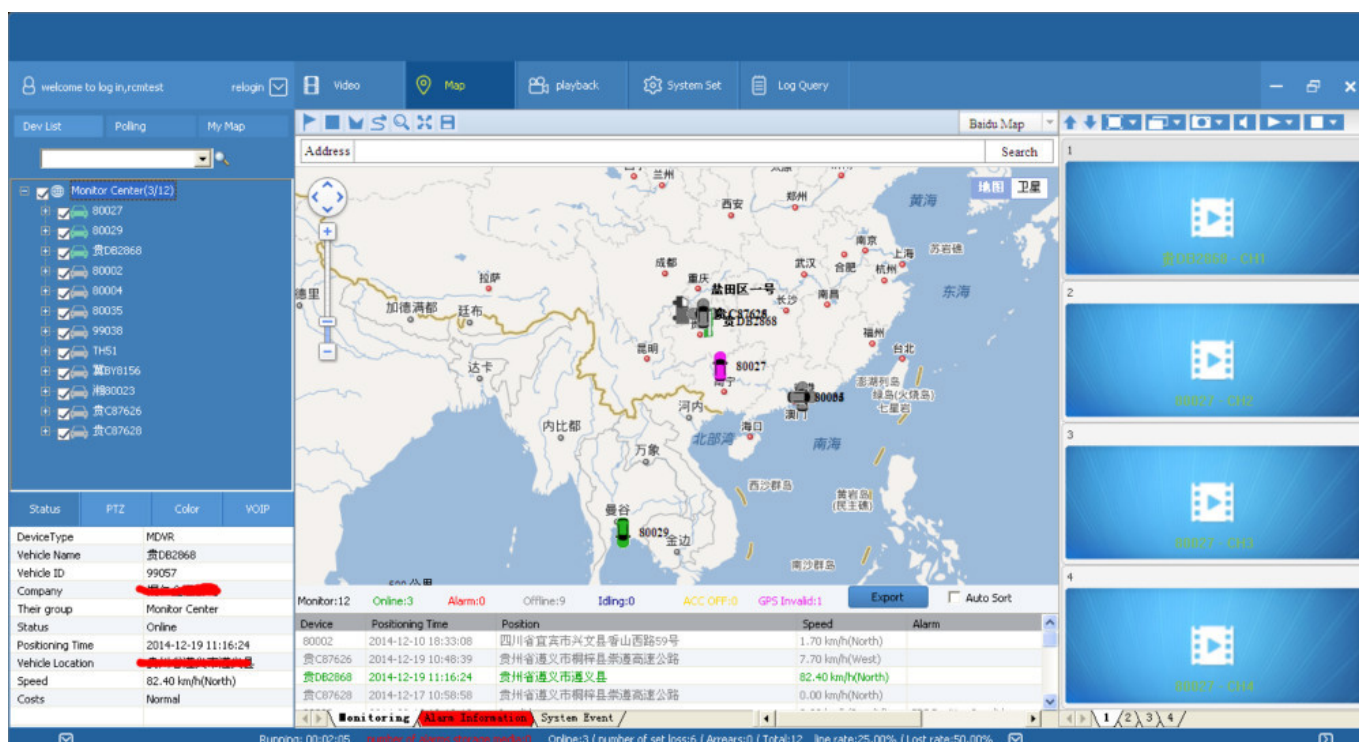
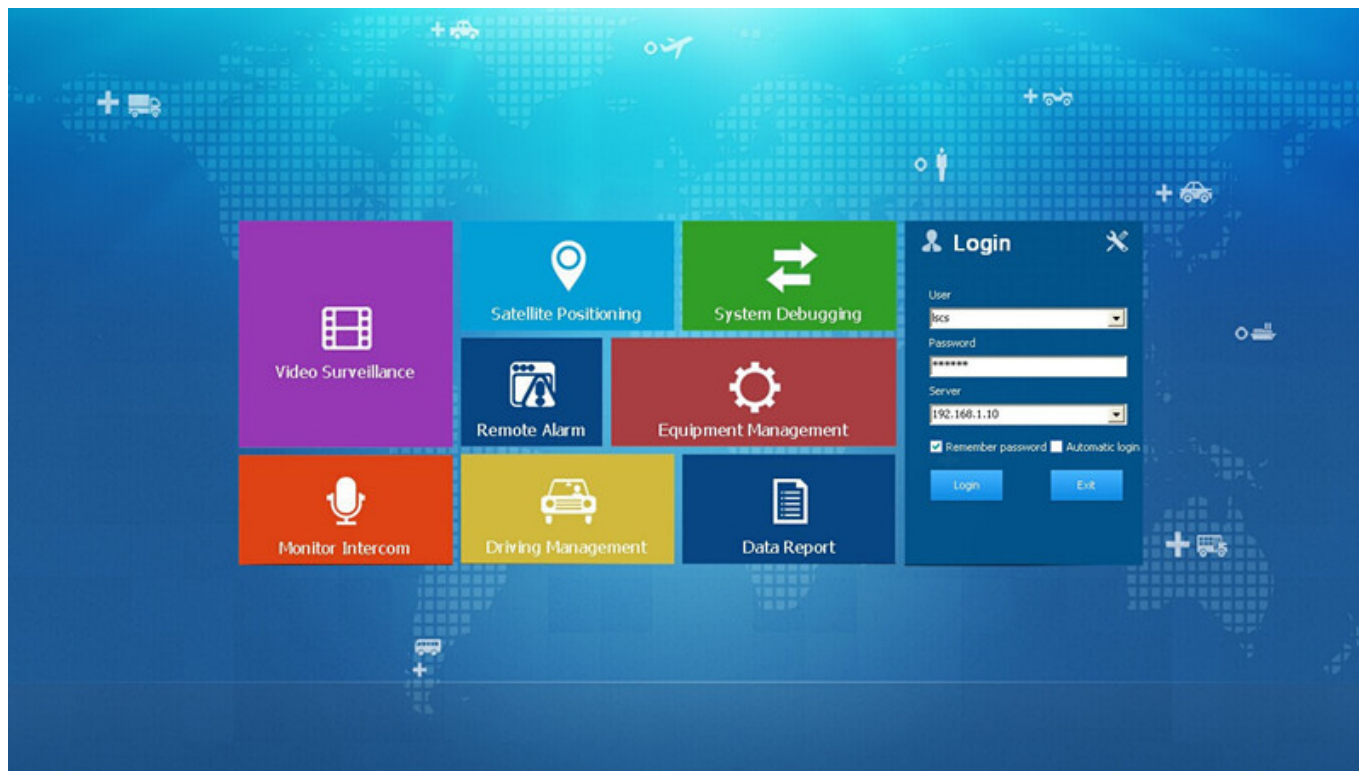
5CH MEGA PIXELS HD HDD MOBILE DVR
五路百万高清车载硬盘录像机

宽电源	无风机	PTZ	报警	VGA	多码流	降噪	CAN	AGC	OTA
车辆信息	摄像	GPS/BD	3G/4G	拨打电话	语音对讲	WiFi	定时控制	手机监控	MSG

模拟 数字

The image shows the RCM-MDR7105 Mobile DVR unit, a black rectangular device with a silver heat sink. It features a USB port, a power input, and a video output. The unit is shown in a perspective view, with its reflection visible below it. To the right of the unit, there are four circular inset images: a monitor displaying multiple camera feeds, a coiled black cable, a bundle of various colored cables, and a close-up of the unit's rear panel showing multiple ports.

PC VIEWING CLIENT SOFTWARE



OUTSTANDING FUNTIONS



GPS Positioning & Overspeed Alarm

GPS data including Latitude, Longitude, and speed of vehicles will be saved along with video footages on to the SD card or hard disk, while playing the footages you can also check the the locations of your vehicles on map. Besides, alerts would be triggered while driving overspeed.



2TB + 128GB Large Capacity Storage

Up to 2TB hard disk & 128GB SD Card supported at the same time for saving video footages, once the disk is full, the DVR will overwrite the earlier files to make space for new files, which means you can have the DVR recording all the time to look after your vehicle.

Alarm I/O Alarm & Alarm Recording

The DVR supports 6 I/O inputs and 1 alarm output. You can set those Inputs to record vehicle bracking, turning left/ right, door opening and more. Also, they can be simply used as a Panic Button, or work with other external sensors to trigger recording or send message to the monitor center.



Main Features

*HIS Solution,H.264 Compression,support 5ch Million Pixels video surveillance, video recording and playback (4CH real-time 720p million Analog HD input and analog standard definition camera + 1CH 1080P network camera input);

*3CH video output (2CH CVBS video output,Support front and rear output; 1CH VGA output for optional)

*Exclusive pre-allocate DVR Special File System Technology,Solving repeatedly wipe cause file fragmentation, solving storage file system crash, data loss and cannot find storage media and file garbled , ensure the integrity of the data.

*6-36V wide voltage with low power consumption. Support Reverse Protection,over-voltage/over-current protection.Output max to 10Amps current, support 12V & 5V peripheral equipment

ower supply. Ultra low power design;

*Unique UPS Technology ensures the integrity of record when power failure occurs,even can last for 8-10s.

*HDD+SD Card Storage (Support 2.5" HDD, max 128G SD Card) protect from Shock & Dust damage;support USB port data backup and device update;

*Support 2 USD ports, data backup and equipment upgrades.

*Support 9CH alarm input (1CH Analog input + 8CH IO alarm input),2CH Independent alarm output.

*Support HDD heating functions,can work in harsh environment.

*Support GPS/BD/G-Sensor Extension module;

*Realize real-time monitor through 3G/4G;

*Support Broadcast/Intercom/Text sent etc;can add oil sensor/temperature sensor/POS/LED Advertisement Panel;

*Support OTG device upgrade automatically, , device can automatically upgrade version update, maintenance is more convenient

*Support IOS/Android Phone Remote monitor

*High reliability aviation connectors, high cost performance, stable and reliable.

Specifications

Item	Parameter	
OS	Linux	
Language	English/Chinese/Customized	
Video Compression	H.264 Compression	
OSD	Overlays information such as date time and vehicle ID	
GUI	Graphical User Interface	Setup system parameters with the remote control.

Video Record System	Video Input	4CH 720P Analog High Definition video+1CH 1080P digital video input ,aviation connector, 1.0Vp-p, 75Ω
	Video Output	2CH CVBS output+1CH VGA output for optional,1.0Vp-p, 75Ω,Support 1CH Full Screen,4CH Screen view
	Preview	Support 1 channel and 4 channels preview, 5 channels splice preview Support Manual/Alarm Trigger full screen preview
	Resolution	1080P/720P/D1/HD1/CIF, MAX:4 channels of 720P + 1080P / 4 channels of D1
	Image Quality	1-4 levels, 1 is the highest level. PAL: 100f/s , CCIR625 line,50field; NTSC: 120f/s, CCIR525 line,60field;
	Video Standard	CIF: 256Kbps ~ 1.5Mbps, 8 level video quality optional;
		HD1: 600Kbps ~ 2.5Mbps, 8 level video quality optional; D1: 800Kbps ~ 3Mbps, 8 level video quality optional; 720P: 4Mbps-6Mbps, multi level video quality optional
Audio	Record Mode	The default setting is auto recording after power on. Timed recording, alarm trigger recording and manual recording are supported.
	Audio Input	4CH Aviation Plug Input
	Audio Output	2CH,headphone connect at front panel, BNC Connect on Back panel
	Compression	G.726 compression, 8KB/s speed
Alarm Input	7CH Alarm Input,1CH AD Input,impulse speed input,Alarm Linkage	
Alarm Output	2CH Alarm Output,Support Light/Sound alarm sensor,Oil/Power cut off	
Interface	3CH RS232, POS/Fuel Sensor/LED Advertisement Connection	
	2CH 485 Interface,Connect PTZ Camera	
Wireless Transmission	Support Built in 3G transmission, WCDMA,CDMA2000,GPRS, EDGE; Built in 4G module optional, TDD-LTE, FDD-LTE	
GPS Position	Support Built GPS/BD Module	
Storage	HDD	Max 2.5" HDD
	SD Card	Max 128GB SD Card Mirror Recording Keep Data Safety
	Update	Support USB Updating, SD Card Updating,OTA Remote Updating
	File Format	H.264 Special FAT32 File System
	USB	USB Interface on Front Panel for data back up by U Disk,Hard Disk
Record Replay	Video Search	Search By Record Time/Record Type etc Max support 4CH Replay /Stop/Fast/Slow at same time
	Playback	Support forward and backward play at the speed of: x 2,x4,x8,x16.
Security	User/Admin 2 Level Different Password	

Optional Functions	Voice Call	Support voice call each other
	TTS Voice Broadcast	Support TTS voice broadcast function.
	Serial Expand	Support LED Advertisement Panel,Oil Sensor,POS,Bus Station Broadcaster,Car OBD,ect.external device
Voltage & Power	Power Management	Wide Voltage.Support Timed/Delay off/ over-load/Reversing connection/voltage shortage/short circuit etc.
	Input Voltage	DC:+6V - +36V
	Output Voltage	+12V,1.5A,+5V,1.5A
	Power	Working <5W
Working Environment	Temperature	-20°C - +70°C
	Humidity	20% - 80%
Others	Size	200 (D)* 187(W)* 62(H) mm
	Weight	1.90 Kg

Advantages

Product Features:

HIS Solution,H.264 Compression,Multiple Streams record ,5CH AHD Video input, 4CH real-time 720p million Analog HD input and analog standard definition camera + 1CH 1080P network camera input,

High quality real time recording, 1080P/720P/CIF/HD1/D1 Optional, quality adjustable;

Professional Car Power Design,6-36V wide voltage,Provide reverse voltage/over-load/short circuit protection, to meet kinds of car application;

Support 12VDC output voltage,power supply for Camera/Screen etc;
Max 2TB HDD + 128GB SD Card Mirror Recording,protect DVR from shock & Dust damage;
Watchdog abnormal restart function,protect SD Card and Record;

Exclusive Pre-allocated Vehicle File System protect data completeness ;

ACC Delay off,can set 24 hours;

Unique UPS Technology ensures the integrity of record when power failure occurs,even can last for 10-15s.

Auto Record/Manual Record/Alarm Record etc working mode to meet different requirements;
Show Car status/Plate/Driving Route/Low Speed/Over Speed information for convenient management;
Support GPS/BD,3G/4G Module Optional,WIFI extend;
Strong Network,device configure via IE Web,Support SMS Get device information and configure;
Support Monitoring,Two-way Intercom, PTZ, Alarm,Over-speed,Geo Fence etc through remote control platform;
8CH IO Alarm input(Door Open,Light,Turn direction,brake,reverse etc),can linkage kinds of alarm;

2CH Alarm Output,Support Light and Sound alarm sensor,Oil/Power cut off;
High level aviation interface,easily installation and better shockproof, more stable;

Support Local Auto-photo when alarm input.

High reliable aviation connectors input/output, easy installation,stronger anti-vibration.
Easily Smart GUI Interface, saving time in device setting;
Strong Stable Application,Support 3G/4G Real-time monitor, talk-back,playback,record,picture snap etc;
Updated through SD or OTA Remote Automatic updating,more stable and convenient;Support Phone Remote Monitor,Phone Calling etc;

Support PTZ/POS/Oil Sensor/LED Advertisement Panel etc;

Support Ministry of Transport Standard Agreement

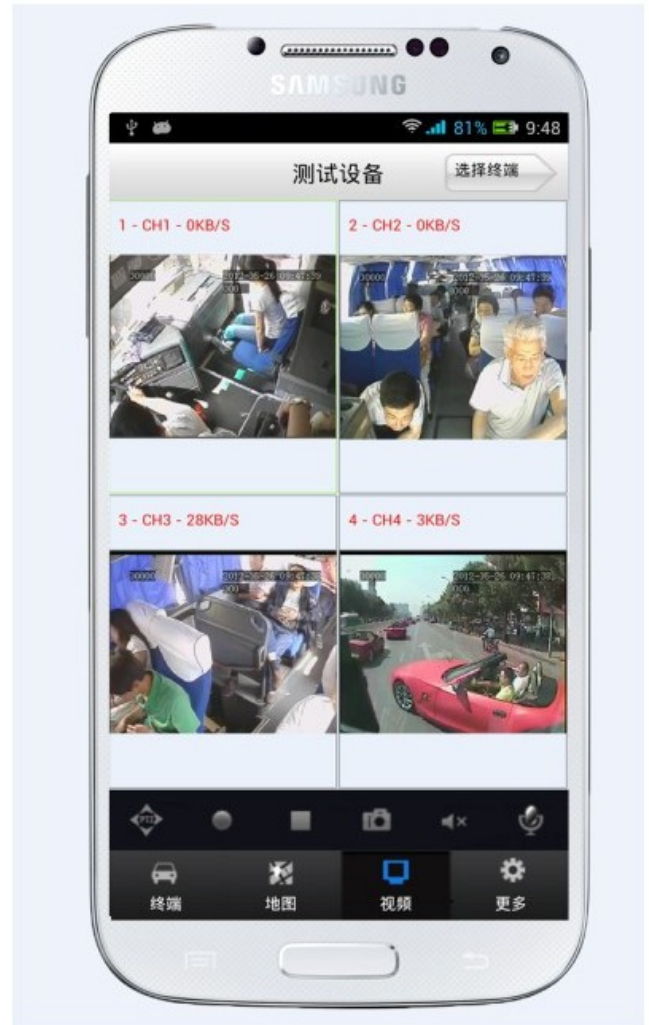
Be Customized according your request;

PC&Phone Monitoring

CMSV6 Interface

**hand CMSV6 In Mobile Phone
Have all in the palm of your**

Real-time monitoring via Mobile Phone
Support iPhone, Android, iPad system



Video & Audio Monitoring **Online Vehicle** **GPS**
Satellite Map **Video Storage**
PTZ control **Tracking Display** **Picture**
Snapshot **Voice intercom**

FQA

Q: During playback, the map doesn't show?

A: Possible reasons are as follows;

1.Net cable did not connect to PC;

2.Net works, but the computer can not get to the Internet;

Q: When SD card and HDD records, How is the record coverage?

A: SD card and HDD will record circularly for each other. When they are full, they

will delete the original video records respectively.

Q: The device was opened, HDD was installed, but the device can not record successful.

A: 1. Check the HDD/SD Card was formatted or not, the unformatted HH/SD Card can not be used. Enter into the Main Menu - System Setup - Formatting the new installed HDD/SD Card.

2. If the recording channel is closed, if set the timing recording, it can not recording when it beyond the period of timing recording.

3. If the HDD is connect well, if the HDD/SD light is on.



Richmor Brand Package



Standard Package



MoneyGram

PayPal

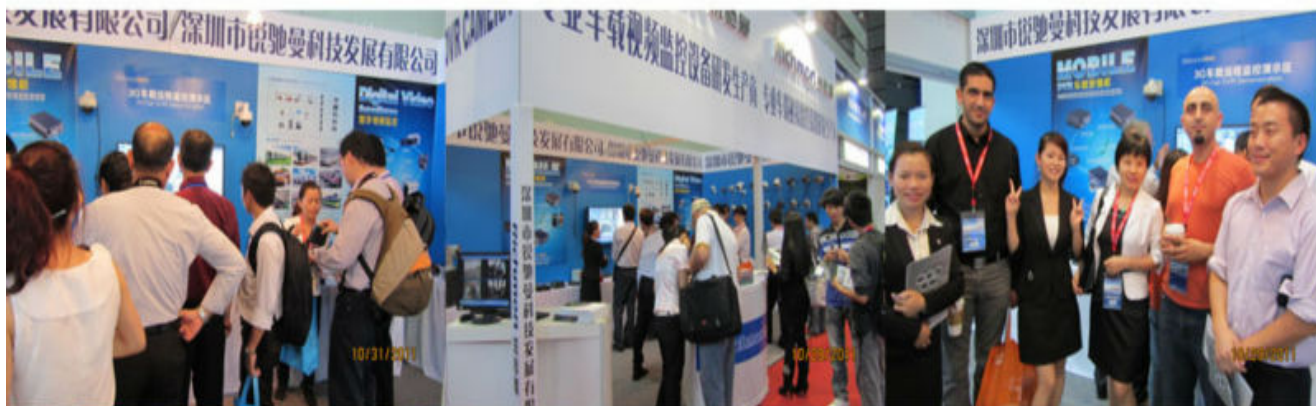
HSBC



Exhibition

Richmor

CPSE2012 in Shenzhen



CPSE2013

10.29-10.31

4 Booth we have

Welcome you !!!



CPSE2012-- Guangdong TV Report-Shenzhen Richmor



Skype:rcmcctvsales2