

Advanced Features:

- 1 H.265/H.264 hardware compression, powerful AI processor, with neuronal logic reasoning engine, support for deep learning algorithms.
- 2 Integrated DMS camera, can expand 1 AI camera input. Support DSM and environmental monitoring.
- 3 DMS camera driving behavior analysis——It can connect the DMS camera to give alarm warning and upload to the monitoring center for dangerous driving behaviors of drivers, including: fatigue (closing eyes, yawning), distraction, smoking, talking on the phone, etc
- 4 Driver face recognition function——Face recognition attendance on the basis of management can also prevent the driver illegal substitution, non-compliance of the driver operation of the problem, standardize the driver and operation management.
- 5 Beidou /GPS positioning, support the ministry of JT/T808, JT/T1076, JT/T905, Geely, Su Biao and other platforms

Products Description



Waiting for you to find more...

Richmor 锐驰曼



Specifications

ABS material, compact size, can be directly attached to the front windshield by 3M glue. The connection is simple and convenient, and the installation can be completed only in 1/20 of the installation time of the traditional terminal.

The machine has a high reliability design, can achieve continuous monitoring in -30°C~70° environment.

Industrial grade scheme and system design of the whole machine and reliable electromagnetic compatibility design, to ensure the stable work of its own and peripheral electronic equipment.

The whole structure has good disassembly and dust proof design, to ensure that TF card, SIM card, antenna and connection port are not damaged.

The host can integrate a variety of video algorithms and the front camera

to realize ADAS early

warning. Optional driving behavior analysis camera implements driving behavior analysis.

1 channel audio input. Integrated high sensitivity MIC, can record in-car audio, and support voice

intercom. Host integrated speaker, audio broadcast and warning.

The host integrates five status indicators to observe the operating status of the device in real time.

External 1 alarm button (SOS).

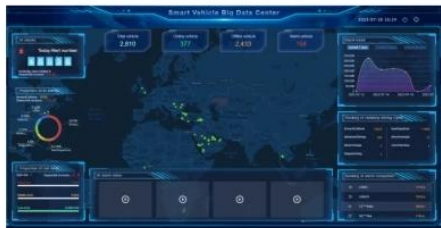
Support GPS/BD positioning module to achieve speed, position, time and route management.

Supports alarm of module anomaly and antenna anomaly.

Support navigation line departure and area entry and exit alarm, the device can save a maximum of 16 lines and areas.

Integrated 4G full network communication module, can realize remote monitoring and management.

Richmor



Mini External Camera



Internal GPS Dashcam

Flexible angle

Built in GPS
Antenna

In-cabin
camera

Road facing
camera



2CH Left-hand Driving

In-cabin
camera

Road facing
camera



External GPS Dashcam

In-cabin
camera

Road facing
camera



2CH Right-hand Driving

Road facing
camera

Flexible
angle



1080P



BD/GPS

G-Sensor



H.265



4G/WIFI



512G



MIC/SPK



3CH Left-hand Driving

In-cabin
camera

Internal
GPS

Driver
face
camera

Road facing
camera



3CH Right-hand Driving

Internal GPS

Driver face
camera

In-cabin
camera

Road facing
camera



ADAS(Advanced Driving Assistance System)

Collision Warning/Passenger Detection/Lane Departure Warning
Enhance driving safety, Avoid accidents!!



DSM(Driver Status Monitoring)

Behavior Detection: Fatigue/Disctraction/Smoking/Calling supported

Language: English/Russian/Spanish/Portuguese/customized



Product Parameters

Product name	Dual len 1080P HD dashcam MDVR
Dual Len	Supports, front len 1080P, reverse len 1080P
Angle of len	Ajustable, 180 degree vertical
4G	Yes
Communication Frequency	TDD-LTE: B38/B39/B40/B41 FDD-LTE: B1/B3/B8 WCDMA: B1
GPS	Yes
WiFi	Yes
Fleet management Platform	Free
Speaker	8Ω, 1W, with audio cavity
Microphone	Single microphone, support echo and noise elimination
G-Sensor	3-axis acceleration sensor
USB	Mini USB*1, support local upgrade or data backup, expandable external digital camera
Panic button	Mini panic button along with
SIM card slot	SIM card slot*1 (MICRO SIM)
TF card slot	TF card slot (For recording video)
Button	1 upgrade button, long press to upgrade
Indicator light	3
Power input	5-30V wide voltage input
Working temperature	-30℃~70℃
Size and weight	length: 115mm; max width: 57.5mm; thickness: 40mm.
Application	Taxi / Car / Online-Hailing / Van, etc.

Company Profile

Shenzhen Richmor Technology Development Co., Ltd. is a high-tech enterprise specializing in the development, production and sales of intelligent commercial vehicle video security solutions and mobile video surveillance products, and has been focusing on the research and development and production of Internet of Vehicles products for many years.

The company's products mainly include Beidou standard high-definition tachograph, AI

active safety assistance driving all-in-one machine, 4G/3G million high-definition AHD mobile video recorder, integrated taxi/online car-hailing special vehicle intelligent video terminal, 4G/3G million high-definition network mobile video recorder, four/eight-way vehicle hard disk/SD card video recorder, 4G/3G individual soldier system, high-definition vehicle camera, high-definition vehicle PTZ, etc. As a professional manufacturer, we are committed to providing customers with first-class technology, high-quality products and professional services.