

[Mobile DVR with SD HDD, RS485 RS232 Public bus mobile dvr, Vehicle tracking system](#)

Mobile dvr support fule sensor for truck security with 4ch ahd camera input

(RCM-MDR210 Series)

[Mobile dvr with wifi](#)

Product features

4ch 720P 3G 4G Mobile DVR

1. H.264 Compression Mode, support 4CH real-time 720P Mega Pixel AHD input and Analog Standard Definition camera input;
2. Exclusive pre-allocate DVR Special File System Technology, solving repeatedly wipe cause file fragmentation, solving SD Card file system collapse, data loss and cannot find SD CARD and file garbled, ensure the integrity of the data.
3. 10-36V Adaptive Wide Voltage input, Super low Power Consumption Design;
4. SD card storage (2SD cards, Each maximum support 128GB) It can be completely resist car Vibration. Dust and others cause data corruption;
5. Support GPS/BD/G-Sensor; High Reliability Aviation Connectors.
6. High Cost Performance with reliable stability, simple and clear operation menu.

RCM-MDR 210 Series	
Model NO.	Function
RCM-MDR210XXXI	Basic Recording,G-Sensor, Single SD card slot
RCM-MDR210XGXX	GPS, G-Sensor, Single SD card slot
RCM-MDR210WGSX	3G, GPS, G-Sensor, Dual SD card slot
RCM-MDR210FGSX	3G, 4G, GPS, G-Sensor, Dual SD card slot
RCM-MDR210WGDY	3G, WIFI, GPS, G-Sensor, Dual SD card slot
RCM-MDR210FGDX	3G, 4G, WIFI, GPS, G-Sensor,Dual SD card slot

Detail pictures

4ch 720P 3G 4G Mobile DVR



Device back view

4ch 720P 3G 4G Mobile DVR



Device front view

4ch 720P 3G 4G Mobile DVR

LED Indicators



4ch 720P 3G 4G Mobile DVR

Back Panel



RCM-MDR210 Parameter Sheet

Item	Parameter	
OS	Linux	
Language	Chinese/English/Customized	
Video Compression	H.264	
OSD	Overlays information such as date time and vehicle ID	
GUI	Graphical User Interface	Setup system parameters with the remote control.
Video Record System	Video Input	4CH 720P AHD input/SD input/mixed video input, aviation connector, 1.0Vp-p, 75Ω
	Video Output	1CH CVBS+1CH VGA output, 1.0Vp-p, 75Ω,Aviation,Support 1CH Full Screen,4CH Screen
	Preview	Support 1 channel and 4 channels preview. Support Manual/Alarm Trigger full screen preview
	Resolution	720P/D1/HD1/CIF, MAX:4 channels 720P
	Video Quality	0-7 levels, 0 is the highest level.
	Video Standard	PAL: 100f/s , CCIR625 line,50field; NTSC: 120f/s, CCIR525 line,60field; CIF: 256Kbps ~ 1.5Mbps, 8 level video quality optional; HD1: 600Kbps ~ 2.5Mbps, 8 level video quality optional; D1: 800Kbps ~ 3Mbps, 8 level video quality optional; 720P: 4Mbps-6Mbps, multi level video quality optional
	Record Mode	The default setting is auto recording after power on. Timed recording, alarm trigger recording and manual recording are supported.
Audio	Audio Input	4CH ,Aviation Plug
	Audio Output	1CH,Aviation Plug
	Compression	G.726 compression, 8KB/s speed
Alarm Input	4Ch Alarm Input, kinds of alarm linkage support	
Alarm Output	1CH Alarm Output	

Communication interface		1CH RS232 or 1CH RS485 for optional
Position		Support Built GPS/BD Module, built in G-sensor, can replay and analyse vehicle driven route.
wireless transmission		Support Built-in 3G/4G wireless transmission function, WCDMA, CDMA2000, TDD-LTE, FDD-LTE....
Motion Detection		Support motion detection alarm. (Can set the video recording duration time after alarm on platform.)
G-Sensor		Support G-sensor
Storage	SD	Dual SD Card,each max 128GB SD Card loop recording
	Upgrade	Support SD Card remote updating
	File Format	H.264
	File System	Special FAT32 File System
Video Playback	Video Search	Search By Record Time/Record Type etc
	Playback	Max support 4CH Replay /Stop/Fast/Slow at same time Support forward and backward play at the speed of: x 2,x4,x8,x16.
Voltage & Power	Power Management	Wide Voltage.Support Timed/Delay off
	Voltage Input	DC:+8V ~ +36V
	Power Consumption	Normal Working □14W , Stand-by status < 0.5W
	Temperature	-20°C to +70°C
Working Environment	Humidity	20% to 80%
	Password	User/Admin 2 Level Different Password
Security	Size	112(W) x36(H) x138(D) mm
others	Net Weight	360g

Richmor surveillance GUI

The main menu includes: Search, System setup, Rec setup, Network setup, Alarm setup, Peripheral setup, System Tools, System Information, as below:



Richmor Mobile DVR Mileage Summary

Vehicle Management System Welcome! 管理员 | Manager | Exit

Report Device User

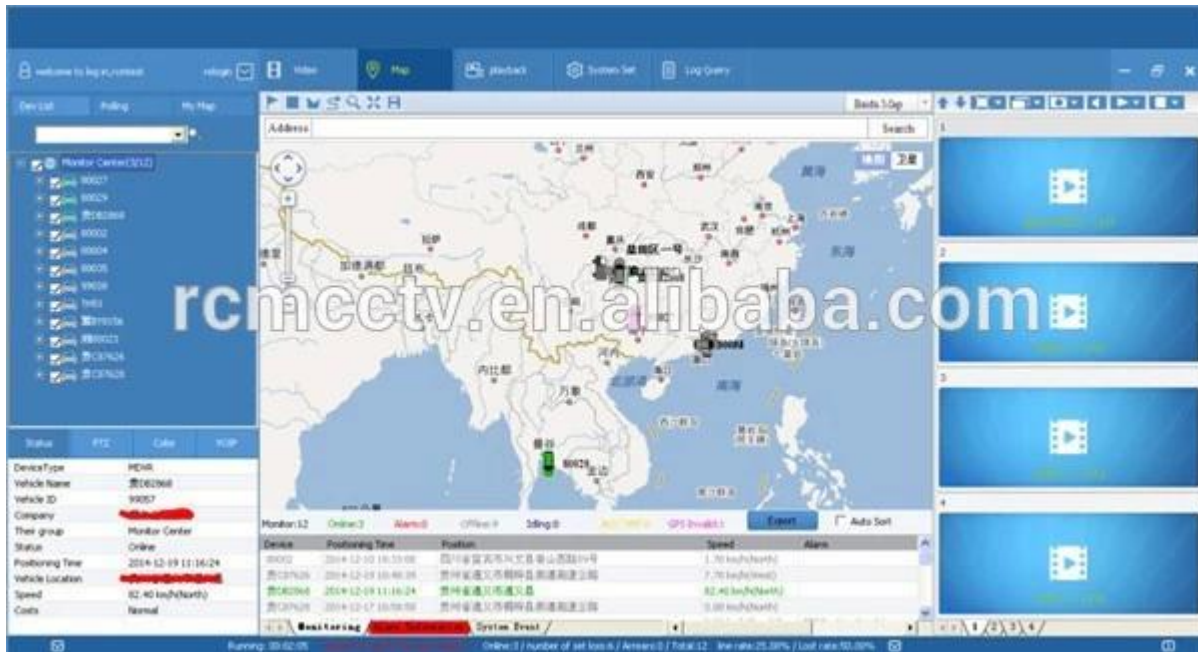
Mileage Summary

Begin Time: 2016-01-08 00:00:00 To: 2016-01-08 16:27:09

Device: All Devices

Index	Vehicle	Total Mileage(KM)	Begin Time	Start Mileage(KM)	Start Position	End Time	End Mileage(KM)
1	鄂D3114	174.88	2016-01-08 08:00:30	22.95	22.52429, 114.00844	2016-01-08 16:25:41	157.83
2	鄂D3130	202.07	2016-01-08 07:30:17	18.1	22.88429, 112.88282	2016-01-08 16:25:28	173.97
3	24012	277.42	2016-01-08 07:08:55	23.41	23.389582, 116.675227	2016-01-08 14:57:24	300.83
4	鄂A78268	97.4	2016-01-08 00:00:25	298.97	41.572492, 118.788245	2016-01-08 08:42:38	41.08
5	24023	0	2016-01-08 00:00:07	18.28	37.158759, 120.731127	2016-01-08 16:19:07	18.28
6	鄂QF5387	416.36	2016-01-08 08:08:54	98.88	35.881432, 117.843783	2016-01-08 16:28:11	92.83
7	鄂D81712	120.98	2016-01-08 04:48:40	28.51	36.878478, 117.681941	2016-01-08 14:25:07	144.92
8	鄂B2250	45.81	2016-01-08 00:00:03	138.13	22.654294, 112.488283	2016-01-08 16:15:15	115.82
9	鄂B1513	48.64	2016-01-08 00:00:27	82	22.654187, 112.487865	2016-01-08 16:11:28	73.72
10	鄂B2268	111.72	2016-01-08 00:00:15	145.61	22.654201, 112.488245	2016-01-08 16:24:48	93.9
11	鄂B5010	52.02	2016-01-08 00:00:10	83.24	22.654234, 112.487785	2016-01-08 16:15:55	57.82
12	鄂A3080	895.08	2016-01-08 00:00:29	354.36	36.882843, 117.682781	2016-01-08 16:24:44	1089.74
13	24058	224.42	2016-01-08 07:00:58	44.57	37.949788, 116.844070	2016-01-08 16:17:34	60.4
14	28998	2.36	2016-01-08 13:11:08	17.6	28.734420, 121.238847	2016-01-08 13:57:27	19.81
15	00588	369.29	2016-01-08 00:00:54	51.84	33.733305, 115.868821	2016-01-08 16:00:58	420.33

Player software interface



Richmor actual case



Application

Widely used in passenger car, bus, taxi, school bus, lorry, dangerous vehicle, personal car and ship etc.



Travelling Bus



Public Bus



Dangerous chemical car



Tobacco Logistics



Taxi



Truck



School Bus



Express Logistics



Road Police Car



Border Car



Traffic Inspection Car



Civil Work Vehicle



Escort Vehicle



Ambulance



Fixed place monitor



Ship Monitor

Buying Guides

Packaging

1 unit with all standard accessories such as AV Cables/IO Cable/Power Cable/Key etc

Neutral paper box or Color paper box with Logo Richmor printed, also welcome customized package.



Richmor Brand Package



Standard Package

Cooperation Terms

Shipping Info

Estimated Shipping Time

- a. 3-5 working days after payment cleared for sample order.
- b. 5-10 working days after payment cleared depends on order quantity for bulk order.

Remarks:

1. Order will be dispatched before next 2 working day after full payment is done, 48 hours aging time;
2. Related documents will be sent after order is dispatched, please check mail;
3. All parcels will be shipped by DHL/TNT/UPS/EMS/FedEx/Air etc according your option;

Payment Info

1. T/T; Western Union; Paypal optional;
2. 30% deposit, balance be paid before delivery

Remarks:

Please sent bank slip when payment done,according this we will arrange the production

Warranty Info

Free Replacement:

Mobile DVR Recorder can replace free under conditions within 15 days after sale,in the precondition of our quality problem,non-artificial damage

Supplier Warranty:

We offer ONE YEAR warranty on Vehicle Mobile DVR Recorder,if your item has any warranty issue please contact us for a satisfying solution

Remark:

All qualified returns/replacement must be guided by us,we may not accept your return without informing us in advance

Service

1. Well Trained Sales Team and strong engineers for fast and professional support.
2. OEM/ODM Service



CUSTOMER SATISFACTION

- Excellent Aftersale service
- 12 months warranty
- 24 hours customer service
- We understand the importance of our customers

Richmor

CPSE2012 in Shenzhen



CPSE2013

10.29-10.31

4 Booth we have

Welcome you !!!



CPSE2012-- Guangdong TV Report-Shenzhen Richmor



About us & Customers:





EXCELLENT SUPPORT



Skype: rcmcctvsales2

[hd car dvr camera system](#)