



**SMS Device configure**  
**OTA Remote Updating**  
**AHD 720P/960P**  
**2TB HDD+128GB SD Card**

**Richmor**





**SMS Device configure**  
**OTA Remote Updating**  
**AHD 720P/960P**  
**2TB HDD+128GB SD Card**

**Richmor**



## RCM-MDR7104 Specification

Item		Parameter
OS		Linux
Language		English/Chinese/Customized
Video Compression		H.264 Compression
OSD		Overlays information such as date time and vehicle ID
GUI		Graphical User Interface
Video Record System	Video Input	Setup system parameters with the remote control.
	Video Output	4CH 960P/720P AHD input,aviation connector, 1.0Vp-p, 75Ω
	Preview	1 CVBS, 1.0Vp-p, 75Ω,Aviation,Support 1CH Full Screen,4CH Screen view
	Resolution	Support 1 channel and 4 channels preview., Support Manual/Alarm Trigger full screen preview
	Image Quality	720P/D1/HD1/CIF, MAX:4 channels of 720P and 4 channels of D1
Video Standard		1-4 levels, 1 is the highest level.
Record Mode		PAL: 100f/s , CCIR625 line,50field;
		NTSC: 120f/s, CCIR525 line,60field;
		CIF: 256Kbps ~ 1.5Mbps, 8 level video quality optional;
		HD1: 600Kbps ~ 2.5Mbps, 8 level video quality optional;
		D1: 800Kbps ~ 3Mbps, 8 level video quality optional;
		720P: 4Mbps-6Mbps, multi level video quality optional
		The default setting is auto recording after power on.
		Timed recording, alarm trigger recording and manual recording are supported.

Audio	Audio Input	4CH Aviation Plug Input
	Audio Output	2CH,headphone connect at front panel, BNC Connect on Back panel
	Compression	G.726 compression, 8KB/s speed
Alarm Input		7CH Alarm Input,1CH AD Input,impulse speed input,Alarm Linkage
Alarm Output		2CH Alarm Output,Support Light/Sound alarm sensor,Oil/Power cut off
Interface		3CH RS232, POS/Fuel Sensor/LED Advertisement Connection
Wireless Transmission		1CH 485 Interface,Connect PTZ Camera
GPS Position		Support Built in 3G transmission,, WCDMA, CDMA2000,GPRS, EDGE; Built in 4G module optional, TDD-LTE, FDD-LTE
Storage	HDD	Support Built GPS/BD Module
	SD Card	Max 2.5" 1TB HDD
	Update	Max 128GB SD Card Mirror Recording Keep Data Safety
	File Format	Support USB Updating, SD Card Updating,OTA Remote Updating
	File System	H.264
Record Replay	USB	Special FAT32 File System
	Video Search	USB Interface on Front Panel for data back up by U Disk,Hard Disk
	Playback	Search By Record Time/Record Type etc
Security		Max support 4CH Replay /Stop/Fast/Slow at same time
Optional Functions	Voice Call	Support forward and backward play at the speed of: x 2,x4,x8,x16.
	TTS Voice Broadcast	User/Admin 2 Level Different Password
	Serial Expand	Support voice call each other
Voltage & Power	Power Management	Support TTS voice broadcast function.
	Input Voltage	Support LED Advertisement Panel,Oil Sensor, POS,Bus Station Broadcaster,Car OBD,ect.external device
	Output Voltage	Wide Voltage.Support Timed/Delay off
	Power	DC:+6V - +36V
Working Environment	Temperature	+12V~1.5A,+5V~1.5A
	Humidity	Working <5W
	Size	-20°C - +70°C
Ohters	Weight	20% - 80%
		200 (D)* 187(W)* 62(H) mm
		1.90 Kg

## Project Application



# 校车监控解决方案

## SCHOOL BUS SOLUTION



### 功能特点 Features



实时监控, GPS定位  
Real-time monitoring,  
GPS positioning

身份验证, 人数统计  
Two-factor authentication



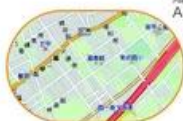
语音功能 Voice features



行车记录, 驾驶行为管理  
Driving behavior management



短信提醒  
Assured SMS alerts



偏航报警  
Yaw alarm

采用高压缩比, 图像清晰的H.264编码格式, 支持开机录像、定时录像及报警录像, 支持ACC熄火延时录像。内置GPS全球定位系统, 可通过3G网络远程查看实时视频, 车辆位置, 回放历史录像。支持手机远程监控。Adopting H.264 Video compression with high resolution, ACC on/off, Timer Recording, ACC Delay Recording Mode supported, Built-in GPS Tracking system, Real time video stream, Vehicle Position, Video Replay can be viewed through 3G Network, Support Mobile Phone remote Monitor.

可连接刷卡器验证身份, 统计数据, 避免人工统计时出现失误。提供每个停靠站点实时的上下学生人数, 避免漏接学生, 以及把学生遗留在车内, 造成事故。Combine with Card Equipment for authenticate information and counting, avoid artificial statistical mistake, offer the students get on/off real time number at each station, avoid the accident caused by missing students or leaving students in the carriage.

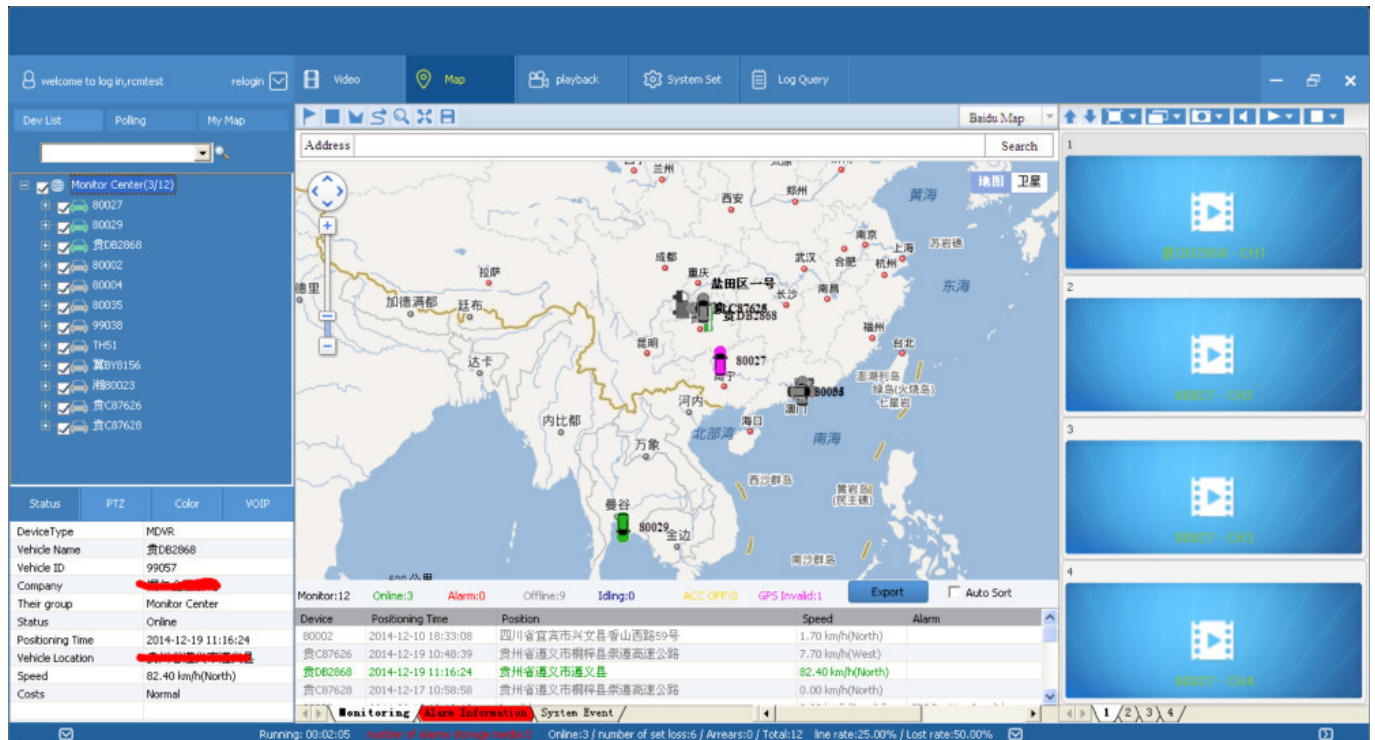
可进行语音电话, 网络对讲, 声音广播。实现管理中心和车辆即时通讯。Support VOIP, 3G Intercom, Broadcast realize Center office communicate with Driver in real time.

对司机的不良行为进行监管, 比如经常超速、急加速、急减速、急刹车等容易对车内学生造成危险的行为; 并对其进行评测, 预防安全隐患发生。Supervise driver's bad behavior, such as: over-speed, acceleration, decelerate urgently, brakes etc dangerous behavior for students, Driver's Performance evidence.

车载智能系统会根据需要向家长发送孩子上下车短信, 包括什么时间、在哪里上车及下车, 让家长及时、快捷的了解学生安全状况, 有利学生接送时间的精确控制。Intelligent vehicle system, students get on/off bus information sent to parents by SMS including When and where on/off, convenient for parents to know students status and easily for picking up students.

预先设定校车的固定行驶路线, 当校车未按照预定的驾驶路线行驶时, 中心上会自动发出语音报警, 中心可与车载终端通过语音对讲进行通讯。Geo Fence Alarm, preset driving route, when out off the line it will sound alarm automatically at center office, center can talk with the driver for the information.

# CMSV6 Interface

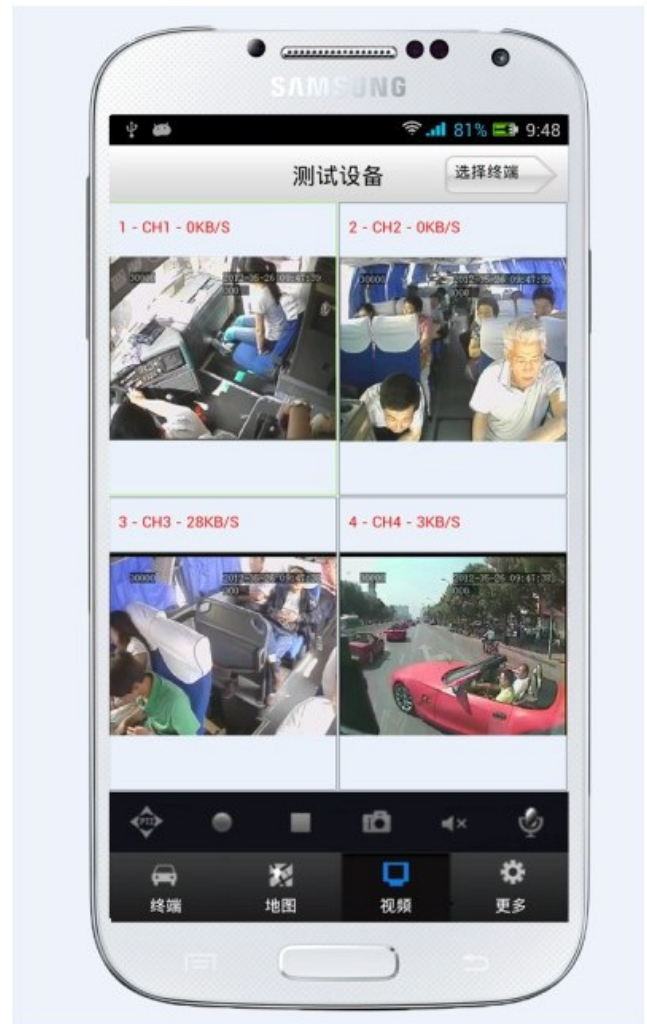


# CMSV6 In Mobile Phone



# hand Have all in the palm of your

Real-time monitoring via Mobile Phone  
Support iPhone, Android, iPad system



Video & Audio Monitoring   Online Vehicle   GPS  
Satellite Map   Video Storage  
PTZ control   Tracking Display   Picture  
Snapshot   Voice intercom

Q: During playback, the map doesn't show?

A: Possible reasons are as follows;

1.Net cable did not connect to PC;

2.Net works, but the computer can not get to the Internet;

Q: When SD card and HDD records, How is the record coverage?

A: SD card and HDD will record circularly for each other. When they are full, they will delete the original video records respectively.

Q: The device was opened, HDD was installed, but the device can not record successful.

A: 1.Check the HDD/SD Card was formatted or not, the unformatted HH/SD Card can not be used. Enter into the Main Menu - System Setup - Formatting the new installed HDD/SD Card.

2. If the recording channel is closed, if set the timing recording, it can not recording when it beyond the period of timing recording.

3. If the HDD is connect well, if the HDD/SD light is on.



Richmor Brand Package



Standard Package

## ***Shipping***

Strong cooperated with DHL/UPS Etc for fast and safety delivery.

a. 2-5 days after payment cleared for sample order.

b. 5-10 days after payment cleared depends on order quantity for bulk order.

## ***Payment***



## **Exhibition**



# Richmor

## CPSE2012 in Shenzhen



### CPSE2013

10.29-10.31

4 Booth we have

Welcome you !!!



## CPSE2012-- Guangdong TV Report-Shenzhen Richmor



## Certifications



## Related Products



## Product Introduction



7104/7204  
720P/1080P  
Series-AHD  
4CH (Top Sale)



9108 Series-  
8ch NVR  
/9204 Series-  
4ch NVR



7105 Series-  
AHD 5CH



8114 Series-  
AHD 4CH



7008 Series-  
D1/720P 8CH

HDD Mobile DVR Series

Skype:rcmcctvsales2