

# 3g remote viewing mobile g-shock gps fuel Mobile DVR for Tanker

(RCM-MDR210 Series)

## Product features

### 4ch 720P 3G 4G Mobile DVR

1. H.264 Compression Mode, support 4CH real-time 720P Mega Pixel AHD input and Analog Standard Definition camera input;
2. Exclusive pre-allocate DVR Special File System Technology, solving repeatedly wipe cause file fragmentation, solving SD Card file system collapse, data loss and cannot find SD CARD and file garbled, ensure the integrity of the data.
3. 10-36V Adaptive Wide Voltage input, Super low Power Consumption Design;
4. SD card storage ( 2SD cards, Each maximum support 128GB) It can be completely resist car Vibration. Dust and others cause data corruption;
5. Support GPS/BD/G-Sensor; High Reliability Aviation Connectors.
6. High Cost Performance with reliable stability, simple and clear operation menu.

RCM-MDR 210 Series	
Model NO.	Function
RCM-MDR210XXI	Basic Recording,G-Sensor, Single SD card slot
RCM-MDR210GX	GPS, G-Sensor, Single SD card slot
RCM-MDR210WGSX	3G, GPS, G-Sensor, Dual SD card slot
RCM-MDR210FGSX	3G, 4G, GPS, G-Sensor, Dual SD card slot
RCM-MDR210WGD	3G, WIFI, GPS, G-Sensor, Dual SD card slot
RCM-MDR210FGD	3G, 4G, WIFI, GPS, G-Sensor,Dual SD card slot

## Detail pictures

## 4ch 720P 3G 4G Mobile DVR



Device back view

## 4ch 720P 3G 4G Mobile DVR



Device front view

**4ch 720P 3G 4G Mobile DVR**

### **LED Indicators**



**4ch 720P 3G 4G Mobile DVR**

## Back Panel



## RCM-MDR210 Parameter Sheet

Item		Parameter
OS		Linux
Language		Chinese/English/Customized
Video Compression		H.264
OSD		Overlays information such as date time and vehicle ID
GUI	Graphical User Interface	Setup system parameters with the remote control.
Video Record System	Video Input	4CH 720P AHD input/SD input/mixed video input, aviation connector, 1.0Vp-p, 75Ω
	Video Output	1CH CVBS+1CH VGA output, 1.0Vp-p, 75Ω, Aviation, Support 1CH Full Screen, 4CH Screen
	Preview	Support 1 channel and 4 channels preview. Support Manual/Alarm Trigger full screen preview
	Resolution	720P/D1/HD1/CIF, MAX:4 channels 720P
	Video Quality	0-7 levels, 0 is the highest level.
	Video Standard	PAL: 100f/s , CCIR625 line, 50field; NTSC: 120f/s, CCIR525 line, 60field; CIF: 256Kbps ~ 1.5Mbps, 8 level video quality optional; HD1: 600Kbps ~ 2.5Mbps, 8 level video quality optional; D1: 800Kbps ~ 3Mbps, 8 level video quality optional; 720P: 4Mbps-6Mbps, multi level video quality optional
Record Mode		The default setting is auto recording after power on. Timed recording, alarm trigger recording and manual recording are supported.
Audio	Audio Input	4CH ,Aviation Plug
	Audio Output	1CH, Aviation Plug
	Compression	G.726 compression, 8KB/s speed
Alarm Input		4Ch Alarm Input, kinds of alarm linkage support
Alarm Output		1CH Alarm Output

Communication interface		1CH RS232 or 1CH RS485 for optional
Position		Support Built GPS/BD Module, built in G-sensor, can replay and analyse vehicle driven route.
wireless transmission		Support Built-in 3G/4G wireless transmission function, WCDMA, CDMA2000, TDD-LTE, FDD-LTE....
Motion Detection		Support motion detection alarm. (Can set the video recording duration time after alarm on platform.)
G-Sensor		Support G-sensor
Storage	SD	Dual SD Card,each max 128GB SD Card loop recording
	Upgrade	Support SD Card remote updating
	File Format	H.264
	File System	Special FAT32 File System
Video Playback	Video Search	Search By Record Time/Record Type etc
	Playback	Max support 4CH Replay /Stop/Fast/Slow at same time Support forward and backward play at the speed of: x 2,x4,x8,x16.
Voltage & Power	Power Management	Wide Voltage.Support Timed/Delay off
	Voltage Input	DC:+8V ~ +36V
	Power Consumption	Normal Working □14W , Stand-by status < 0.5W
	Temperature	-20°C to +70°C
Working Environment	Humidity	20% to 80%
	Password	User/Admin 2 Level Different Password
Security	Size	112(W) x36(H) x138(D) mm
others	Net Weight	360g

## Richmor surveillance GUI

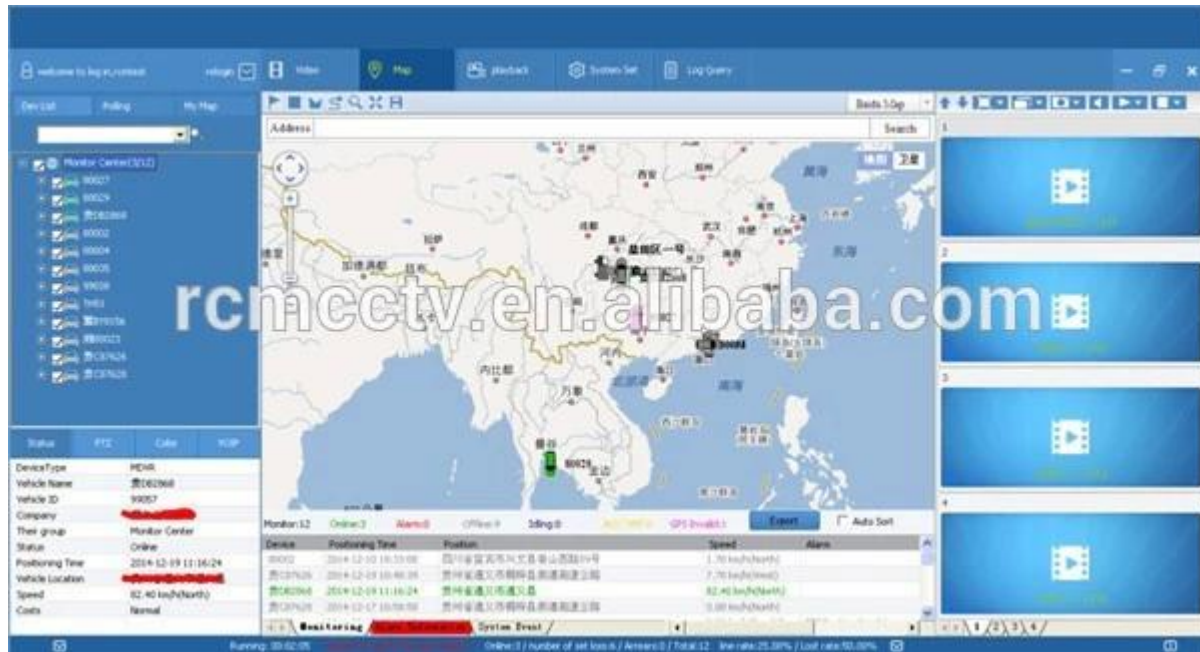
The main menu includes: Search, System setup, Rec setup, Network setup, Alarm setup, Peripheral setup, System Tools, System Information, as below:



## Richmor Mobile DVR Mileage Summary

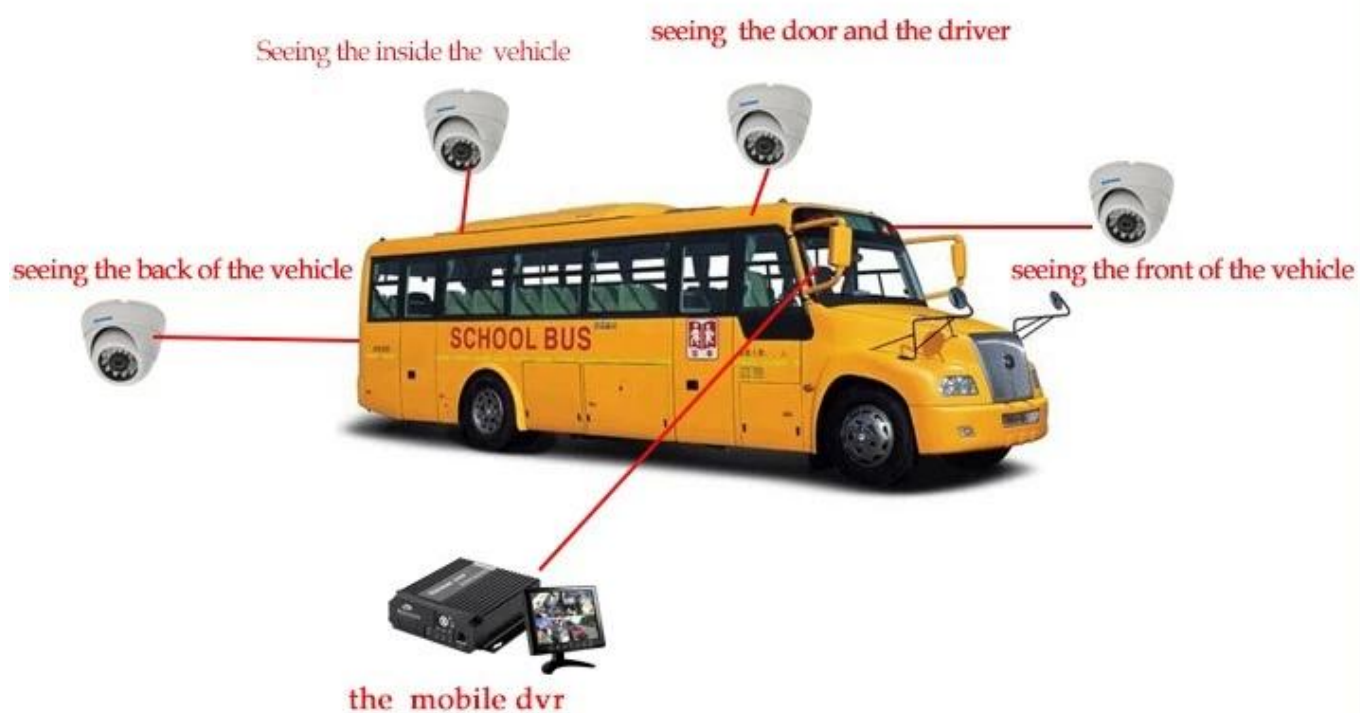
Vehicle Management System									
Welcome! 销售经理   Manager   Exit									
Report Device User									
<div> </div> <div> <div>Mileage Summary</div> <div> Begin Time: 2016-01-08 00:00:00 To: 2016-01-08 16:27:09 </div> <div> Device: All Devices Select Device Query Export To Excel Export To CSV Export To PDF </div> </div>									
<div> <div>Report</div> <div> <div>Quick Report</div> <div>Mileage Summary</div> <div>Mileage Daily</div> <div>Track Detail</div> <div>Speed Report</div> <div>Online Summary</div> <div>ID Alarm Report</div> <div>Alarm Report</div> <div>Storage Report</div> <div>Upgrade Report</div> <div>Fuel Report</div> <div>Park Report</div> <div>Geo Fencing Report</div> <div>3G Flow Report</div> <div>Extend Report</div> <div>Dispatch Report</div> </div> </div>									
Mileage Summary									
Index	Vehicle	Total Mileage(KM)	Begin Time	Start Mileage(KM)	Start Position	End Time	End Mileage(KM)		
1	粤B3114	174.88	2016-01-08 08:00:30	22.95	22.524294, 114.008444	2016-01-08 16:25:41	157.83		
2	粤B3130	202.07	2016-01-08 07:30:17	16.1	22.664296, 112.882802	2016-01-08 16:25:28	171.57		
3	24012	277.42	2016-01-08 07:09:55	23.41	23.369582, 116.673227	2016-01-08 14:57:24	300.03		
4	粤A78248	97.4	2016-01-08 00:00:25	236.97	41.572492, 116.788245	2016-01-08 08:42:36	41.09		
5	24023	0	2016-01-08 00:00:07	16.26	37.158759, 120.731127	2016-01-08 16:19:07	16.26		
6	粤QW5387	416.36	2016-01-08 08:09:54	96.88	35.461432, 117.843783	2016-01-08 16:28:11	92.83		
7	粤B81712	120.98	2016-01-08 04:48:43	26.51	36.876478, 117.681941	2016-01-08 14:25:07	144.92		
8	粤B82250	45.81	2016-01-08 00:00:03	138.13	22.654294, 112.488263	2016-01-08 16:15:15	115.82		
9	粤B6153	48.64	2016-01-08 00:00:27	82	22.654187, 112.487565	2016-01-08 16:11:28	73.72		
10	粤B8268	111.72	2016-01-08 00:00:15	145.61	22.654321, 112.488645	2016-01-08 16:24:48	93.9		
11	粤B6010	52.02	2016-01-08 00:00:10	83.24	22.654294, 112.487785	2016-01-08 16:15:55	57.82		
12	粤A3083	895.08	2016-01-08 00:00:29	354.36	36.950843, 117.858781	2016-01-08 16:24:44	1009.74		
13	24058	224.42	2016-01-08 07:00:58	44.57	37.949788, 116.844070	2016-01-08 16:17:34	60.4		
14	28999	2.36	2016-01-08 13:13:08	17.6	28.734423, 121.338847	2016-01-08 13:57:27	19.81		
15	00588	369.29	2016-01-08 00:00:54	51.84	33.733305, 115.868821	2016-01-08 16:00:58	420.33		

## Player software interface



## Remote Viewing Surveillance 3G 4G Mobile DVR School bus solution







## 功能特点 Features



实时监控, GPS定位  
Real-time monitoring,  
GPS positioning

身份验证, 人数统计  
Two-factor authentication



语音功能 Voice features



校车  
卫士

行车记录, 驾驶员行为管理  
Driving behavior management



短信提醒  
Assured SMS alerts



偏离报警  
Yaw alarm

采用高压压缩比, 图像清晰的H.264编码格式, 支持开机录像、定时录像及报警录像, 支持ACC熄火延时录像。内置GPS全球定位系统, 可通过3G网络远程查看实时视频, 车辆位置, 回放历史录像。支持手机远程监控。 Adopting H.264 Video compression with high resolution, ACC on/off, Timer Recording, ACC Delay Recording Mode supported. Built-in GPS Tracking system, Real time video stream, Vehicle Position, Video Replay can be viewed through 3G Network, Support Mobile Phone remote Monitor.

可连接刷卡器验证身份, 统计数据, 避免人工统计时出现失误。提供每个停靠站点实时的上下学生人数, 避免漏接学生, 以及把学生遗留在车内, 造成事故。 Combine with Card Equipment for authenticate information and counting, avoid artificial statistical mistake, offer the students get on/off real time number at each station, avoid the accident caused by missing students or leaving students in the carriage.

可进行语音电话, 网络对讲, 声音广播。实现管理中心和车辆即时通讯。 Support VOIP, 3G Intercom, Broadcast realize Center office communicate with Driver in real time.

对司机的不良行为进行监督, 比如经常超速、急加速、急减速、急刹车等容易对车内学生造成危险的行为; 并对其进行评测, 预防安全隐患发生。 Supervise driver's bad behavior, such as: over-speed, acceleration, decelerate urgently, brakes etc dangerous behavior for students, Driver's Performance evidence.

车载智能系统会根据需要向家长发送孩子上下车短信, 包括什么时间、在哪里上车及下车, 让家长及时、快捷的了解学生安全状况, 有利于学生接送时间的精确控制。 Intelligent vehicle system, students get on/off bus information sent to parents by SMS including When and where on/off, convenient for parents to know students status and easily for picking up students.

预先设定校车的固定行驶路线, 当校车未按照预定的行驶路线行驶时, 中心上会自动发出语音报警, 中心可与车载终端通过语音对讲进行通讯。 Geo Fence Alarm, preset driving route, when out off the line it will sound alarm automatically at center office, center can talk with the driver for the information.

## Richmor actual case

Richmor 锐驰曼 移动监控管理平台

出租车-锐驰曼精致小巧功能强

序号	车牌号	司机	状态	位置	速度	油耗	里程	备注
001	京A12345	张三	行驶	北京市朝阳区	45km/h	10L/h	100km	正常运营
002	京A6789	李四	停止	北京市海淀区	0km/h	0L/h	0km	车辆故障
003	京A9876	王五	行驶	北京市西城区	30km/h	8L/h	80km	正常运营
004	京A5432	赵六	停止	北京市东城区	0km/h	0L/h	0km	车辆故障
005	京A1111	孙七	行驶	北京市丰台区	50km/h	12L/h	120km	正常运营
006	京A2222	周八	停止	北京市昌平区	0km/h	0L/h	0km	车辆故障
007	京A3333	吴九	行驶	北京市顺义区	40km/h	9L/h	90km	正常运营
008	京A4444	郑十	停止	北京市通州区	0km/h	0L/h	0km	车辆故障
009	京A5555	冯十一	行驶	北京市大兴区	35km/h	8.5L/h	85km	正常运营
010	京A6666	陈十二	停止	北京市怀柔区	0km/h	0L/h	0km	车辆故障

## Application

Widely used in passenger car,bus,taxi,school bus,lorry,dangerous vehicle, personal car and ship etc.



Travelling Bus



Public Bus



Dangerous chemical car



Tobacco Logistics



Taxi



Truck



School Bus



Express Logistics



Road Police Car



Border Car



Traffic Inspection Car



Civil Work Vehicle



Escort Vehicle



Ambulance



Fixed place monitor



Ship Monitor

## Buying Guides

### Packaging

1 unit with all standard accessories such as AV Cables/IO Cable/Power Cable/Key etc

Neutral paper box or Color paper box with Logo Richmor printed,also welcome customized package.



Richmor Brand Package



Standard Package

## Cooperation Terms

## Shipping Info

### Estimated Shipping Time

- a. 3-5 working days after payment cleared for sample order.
- b. 5-10 working days after payment cleared depends on order quantity for bulk order.

### Remarks:

- 1. Order will be dispatched before next 2 working day after full payment is done, 48 hours aging time;
- 2. Related documents will be sent after order is dispatched, please check mail;
- 3. All parcels will be shipped by DHL/TNT/UPS/EMS/FedEx/Air etc according your option;

## Payment Info

- 1. T/T; Western Union; Paypal optional;
- 2. 30% deposit, balance be paid before delivery

**Remarks:**

Please sent bank slip when payment done,according this we will arrange the production

## Warranty Info

**Free Replacement:**

Mobile DVR Recorder can replace free under conditions within 15 days after sale,in the precondition of our quality problem,non-artificial damage

## Supplier Warranty:

We offer ONE YEAR warranty on Vehicle Mobile DVR Recorder,if your item has any warranty issue please contact us for a satisfying solution

**Remark:**

All qualified returns/replacement must be guided by us,we may not accept your return without informing us in advance

## Service

1. Well Trained Sales Team and strong engineers for fast and professional support.
2. OEM/ODM Service



### CUSTOMER SATISFACTION

- Excellent Aftersale service
- 12 months warranty
- 24 hours customer service
- We understand the importance of our customers



Certifications



Exhibition

**Richmor**

CPSE2012 in Shenzhen



CPSE2013

10.29-10.31

4 Booth we have

Welcome you !!!



CPSE2012-- Guangdong TV Report-Shenzhen Richmor



**About us & Customers:**







---

**EXCELLENT SUPPORT**



## **What is our expectation**

**Being your helpful and long term partner meeting your requirement.**

**Any question about your vehicle project, contact our representative Vicky.**

**Mob/Whatsapp: +86 18929318475      Skype: rcmcctvsales7**