

2TB HDD&128G SD Card 5CH AHD 1080P/720P Realtime Vehicle Mobile DVR with Broadcast and Intercom

5CH mobile DVR recorder 2TB HDD+128GB Mobile NVR/DVR WIFI/3G/4G GPS G-sensor



5CH mobile DVR recorder 2TB HDD+128GB Mobile NVR/DVR WIFI/3G/4G GPS G-sensor



Richmor actual case

5CH mobile DVR recorder 2TB HDD+128GB Mobile NVR/DVR WIFI/3G/4G GPS G-sensor

Richmor 锐驰曼 移动视频监控平台

校车-锐驰曼智慧护航爱相传

设备名称	设备ID	经纬度	GPS时间	位置	速度	引擎	状态	里程	其他信息
锐驰曼	24303	24303	2016-03-11 17:53:18	安徽省合肥市庐阳区24303(二村)	0.00 km/h(0)	50卡(正常)	(正常)ACC开,有电	48.50 km	网络信号好,GPS模块存在
锐驰曼	24303	24303	2016-03-11 17:53:18	安徽省合肥市庐阳区24303(二村)	44.00 km/h(东)	50卡(正常)	(正常)ACC开,有电	21.03 km	网络信号好,GPS模块存在
锐驰曼	24307	24307	2016-03-11 17:53:18	安徽省合肥市庐阳区24307	36.00 km/h(东)	50卡(正常)	(正常)ACC开,有电	37.47 km	网络信号好,GPS模块存在
锐驰曼	24309	24309	2016-03-11 17:53:18	安徽省合肥市庐阳区24309	0.00 km/h(东)	50卡(正常)	(正常)ACC开,有电	96.49 km	网络信号好,GPS模块存在

Richmor 锐驰曼 移动视频监控平台

欢迎登录: xskh01 系统

实时监控 电子地图 回放管理 信息管理 系统设置

线路列表 车辆列表 我的地图

公交客车: 锐驰曼实用放心有品味

地址: 搜索 地图 卫星

24003 - CH1 - 15 KB/s
24003 - CH2 - 20 KB/s
24003 - CH3 - 4 KB/s
24003 - CH4 - 25 KB/s

设备类型: MDVR
终端名称: 24003
终端ID: 24003
所属分组: 监控中心
状态: 在线
GPS时间: 2015-09-11 10:46:37
位置: 广东省汕尾市陆丰市G15(沈海高速公路)
速度: 83.00 km/h(西南)
费用: 正常

终端	GPS时间	位置	速度	报警
24003	2015-09-11 10:46:37	广东省汕尾市陆丰市G15(沈海高速公路)	83.00 km/h(西南)	
24023	2015-09-11 10:46:46	山东省烟台市蓬莱市	0.00 km/h(北)	
24036	2015-09-11 10:46:38	河南省南阳市宛城区信臣东路	49.00 km/h(西)	
24049	2015-09-11 10:46:44	广东省云浮市新兴县S113(广兴大道西)	0.00 km/h(东)	

运行时长: 00:00:44 在线数: 12 / 定损数: 86 / 欠费: 0 / 易数: 131 在线率: 9.16% / 定损率: 0

2015/9/11 10:47

Video Surveillance

Satellite Positioning

System Debugging

Remote Alarm

Equipment Management

Monitor Intercom

Driving Management

Data Report

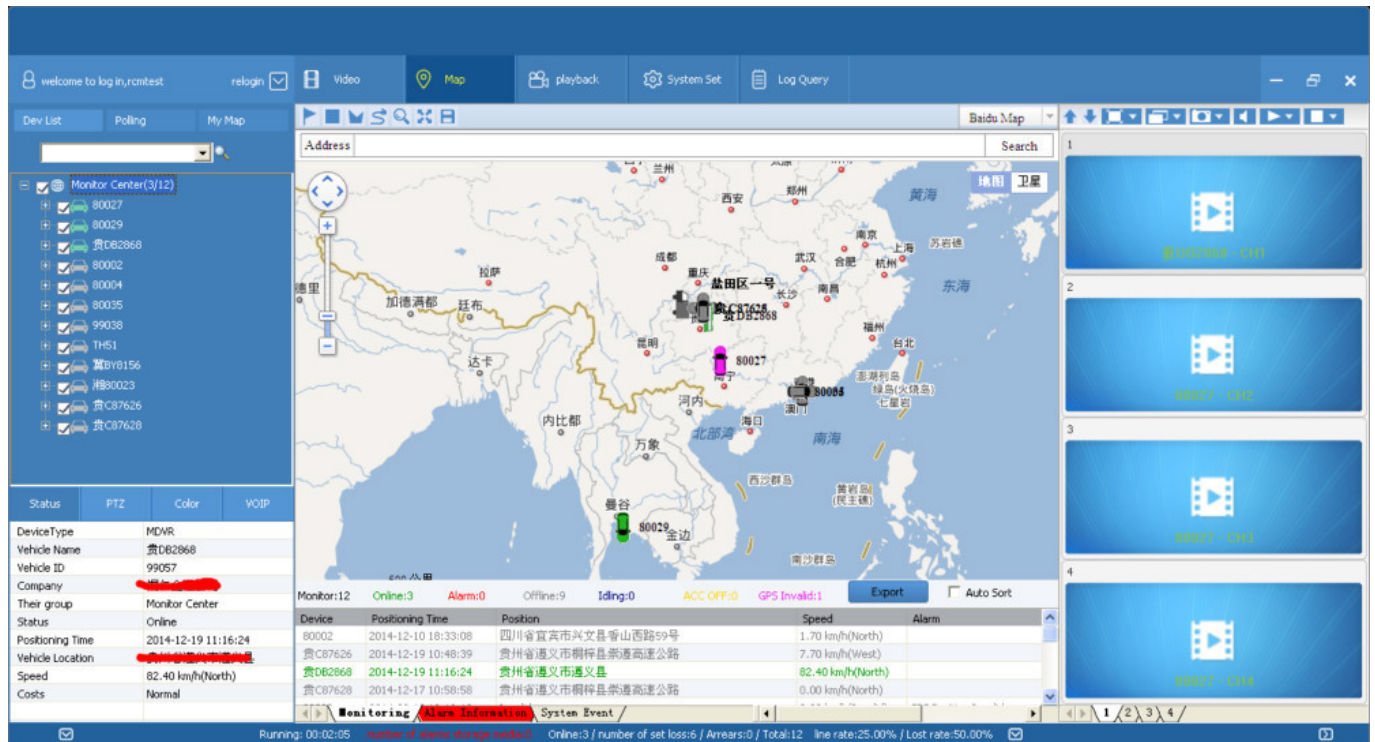
Login

User:

Password:

Server:

☒ Remember password ☐ Automatic login



Richmor mobile dvr GUI interface



2TB HDD&128G SD Card 5CH AHD 1080P/720P Realtime Vehicle Mobile DVR with Broadcast and Intercom

HDD MDVR

Main Features

*HIS Solution,H.264 Compression,support 5ch Million Pixels video surveillance, video recording and playback (4CH real-time 720p million Analog HD input and analog standard definition camera + 1CH 1080P network camera input);

*3CH video output (2CH CVBS video output,Support front and rear output; 1CH VGA output for optional);

- *Exclusive pre-allocate DVR Special File System Technology, Solving repeatedly wipe cause file fragmentation, solving storage file system crash, data loss and cannot find storage media and file garbled, ensure the integrity of the data.
- *6-36V wide voltage with low power consumption. Support Reverse Protection, over-voltage/over-current protection. Output max to 10Amps current, support 12V & 5V peripheral equipment power supply. Ultra low power design;
- *Unique UPS Technology ensures the integrity of record when power failure occurs, even can last for 8-10s.
- *HDD+SD Card Storage (Support 2.5" HDD, max 128G SD Card) protect from Shock & Dust damage; support USB port data backup and device update;
- *Support 2 USB ports, data backup and equipment upgrades.
- *Support 9CH alarm input (1CH Analog input + 8CH IO alarm input), 2CH Independent alarm output.
- *Support HDD heating functions, can work in harsh environment.
- *Support GPS/BD/G-Sensor Extension module;
- *Realize real-time monitor through 3G/4G;
- *Support Broadcast/Intercom/Text sent etc; can add oil sensor/temperature sensor/POS/LED Advertisement Panel;
- *Support OTG device upgrade automatically, device can automatically upgrade version update, maintenance is more convenient
- *Support IOS/Android Phone Remote monitor
- *High reliability aviation connectors, high cost performance, stable and reliable.

Specifications

Item	Parameter
OS	Linux
Language	English/Chinese/Customized
Video Compression	H.264 Compression
OSD	Overlays information such as date time and vehicle ID

GUI	Graphical User Interface	Setup system parameters with the remote control.
	Video Input	4CH 720P Analog High Definition video+1CH 1080P digital video input ,aviation connector, 1.0Vp-p, 75Ω
	Video Output	2CH CVBS output+1CH VGA output for optional,1.0Vp-p, 75Ω,Support 1CH Full Screen,4CH Screen view
	Preview	Support 1 channel and 4 channels preview, 5 channels splice preview Support Manual/Alarm Trigger full screen preview
	Resolution	1080P/720P/D1/HD1/CIF, MAX:4 channels of 720P + 1080P / 4 channels of D1
	Image Quality	1-4 levels, 1 is the highest level.
Video Record System	Video Standard	PAL: 100f/s , CCIR625 line,50field;
		NTSC: 120f/s, CCIR525 line,60field;
		CIF: 256Kbps ~ 1.5Mbps, 8 level video quality optional;
		HD1: 600Kbps ~ 2.5Mbps, 8 level video quality optional;
Audio	Record Mode	D1: 800Kbps ~ 3Mbps, 8 level video quality optional;
		720P: 4Mbps-6Mbps, multi level video quality optional
		The default setting is auto recording after power on. Timed recording, alarm trigger recording and manual recording are supported.
Audio	Audio Input	4CH Aviation Plug Input
	Audio Output	2CH,headphone connect at front panel, BNC Connect on Back panel
	Compression	G.726 compression, 8KB/s speed
Alarm Input	7CH Alarm Input,1CH AD Input,impulse speed input,Alarm Linkage	
Alarm Output	2CH Alarm Output,Support Light/Sound alarm sensor,Oil/Power cut off	
Interface	3CH RS232, POS/Fuel Sensor/LED Advertisement Connection	
	2CH 485 Interface,Connect PTZ Camera	

Wireless Transmission	Support Built in 3G transmission, WCDMA,CDMA2000,GPRS, EDGE;	
	Built in 4G module optional, TDD-LTE, FDD-LTE	
GPS Position	Support Built GPS/BD Module	
Storage	HDD	Max 2.5" HDD
	SD Card	Max 128GB SD Card Mirror Recording Keep Data Safety
	Update	Support USB Updating, SD Card Updating,OTA Remote Updating
	File Format	H.264 Special FAT32 File System
	USB	USB Interface on Front Panel for data back up by U Disk,Hard Disk
Record Replay	Video Search	Search By Record Time/Record Type etc
	Playback	Max support 4CH Replay /Stop/Fast/Slow at same time Support forward and backward play at the speed of: x 2,x4,x8,x16.
Security	User/Admin 2 Level Different Password	
	Voice Call	Support voice call each other
Optional Functions	TTS Voice Broadcast	Support TTS voice broadcast function.
	erial Expand	Support LED Advertisement Panel,Oil Sensor,POS,Bus Station Broadcaster,Car OBD,ect.external device
	Power Management	Wide Voltage.Support Timed/Delay off/ over-load/Reversing connection/voltage shortage/short circuit etc.
Voltage & Power	Input Voltage	DC:+6V - +36V
	Output Voltage	+12V,1.5A,+5V,1.5A
	Power	Working <5W
Working Environment	Temperature	-20℃ - +70℃
	Humidity	20% - 80%
Ohters	Size	200 (D)* 187(W)* 62(H) mm
	Weight	1.90 Kg





Advantages

Product Features:

HIS Solution, H.264 Compression, Multiple Streams record, 5CH AHD Video input, 4CH real-time 720p million Analog HD input and analog standard definition camera + 1CH 1080P network camera input,

High quality real time recording, 1080P/720P/CIF/HD1/D1 Optional, quality adjustable;

Professional Car Power Design, 6-36V wide voltage, Provide reverse voltage/over-load/short circuit protection, to meet kinds of car application;

Support 12VDC output voltage, power supply for Camera/Screen etc;

Max 2TB HDD + 128GB SD Card Mirror Recording,protect DVR from shock & Dust damage;
Watchdog abnormal restart function,protect SD Card and Record;

Exclusive Pre-allocated Vehicle File System protect data completeness ;

ACC Delay off,can set 24 hours;

Unique UPS Technology ensures the integrity of record when power failure occurs,even can last for 10-15s.

Auto Record/Manual Record/Alarm Record etc working mode to meet different requirements;
Show Car status/Plate/Driving Route/Low Speed/Over Speed information for convenient management;
Support GPS/BD,3G/4G Module Optional,WIFI extend;
Strong Network,device configure via IE Web,Support SMS Get device information and configure;
Support Monitoring,Two-way Intercom, PTZ, Alarm,Over-speed,Geo Fence etc through remote control platform;
8CH IO Alarm input(Door Open,Light,Turn direction,brake,reverse etc),can linkage kinds of alarm;

2CH Alarm Output,Support Light and Sound alarm sensor,Oil/Power cut off;
High level aviation interface,easily installation and better shockproof, more stable;

Support Local Auto-photo when alarm input.

High reliable aviation connectors input/output, easy installation,stronger anti-vibration.
Easily Smart GUI Interface, saving time in device setting;
Strong Stable Application,Support 3G/4G Real-time monitor, talk-back,playback,record,picture snap etc;
Updated through SD or OTA Remote Automatic updating,more stable and convenient;Support Phone Remote Monitor,Phone Calling etc;

Support PTZ/POS/Oil Sensor/LED Advertisement Panel etc;

Support Ministry of Transport Standard Agreement

Be Customized according your request;

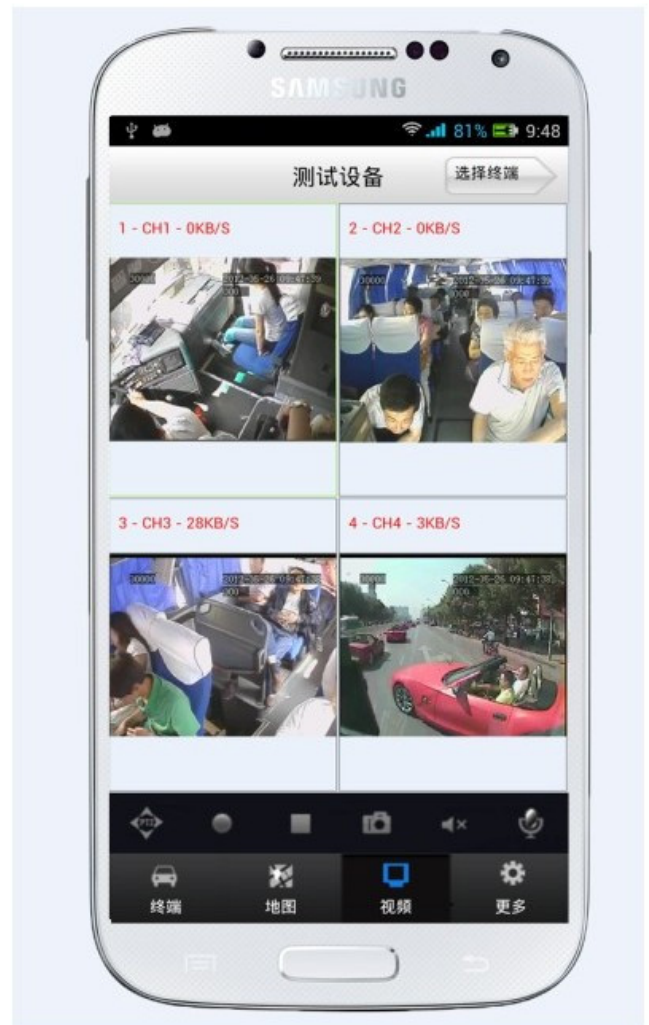
PC&Phone Monitoring

CMSV6 Interface

**CMSV6 In Mobile Phone
Have all in the palm of your**

hand

Real-time monitoring via Mobile Phone
Support iPhone, Android, iPad system



Video & Audio Monitoring **Online Vehicle** **GPS**
Satellite Map **Video Storage**
PTZ control **Tracking Display** **Picture**
Snapshot **Voice intercom**

FQA

Q: During playback, the map doesn't show?

A: Possible reasons are as follows;

1.Net cable did not connect to PC;

2.Net works, but the computer can not get to the Internet;

Q: When SD card and HDD records, How is the record coverage?

A: SD card and HDD will record circularly for each other. When they are full, they will delete the original video records respectively.

Q: The device was opened, HDD was installed, but the device can not record successful.

A: 1.Check the HDD/SD Card was formatted or not, the unformatted HH/SD Card can not be used. Enter into the Main Menu – System Setup – Formatting the new installed HDD/SD Card.

2. If the recording channel is closed, if set the timing recording, it can not recording when it beyond the period of timing recording.

3. If the HDD is connect well, if the HDD/SD light is on.



Richmor Brand Package



Standard Package



Shipping

Strong cooperated with DHL/UPS Etc for fast and safety delivery.

a. 2-5 days after payment cleared for sample order.

b. 5-10 days after payment cleared depends on order quantity for bulk order.



Exhibition

Richmor

CPSE2012 in Shenzhen



CPSE2013

10.29-10.31

4 Booth we have

Welcome you !!!



CPSE2012-- Guangdong TV Report-Shenzhen Richmor



Certifications

Contact Representative: Vicky Chan