

Parameter

Video channels	8 channel video & 8channel audio
Video Compression	H.264 Compression Mode
Video Input	8CH 720P AHD/8CH 1080P AHD input
Video Output	1CH CVBS+ VGA output for optional
Resolution	Support 1080P/720P/D1/CIF, for optional
Audio Input	9CH ,Aviation Plug
Audio Output	2CH
Alarm Input	16CH IO Alarm Input, 2CH Analog Alarm input
Alarm Output	4CH Alarm Output
Communication Interface	Support Built GPS/BD Module
Position	Support Built GPS/BD Module
G-Sensor	Support G-sensor
Video Storage	2.5'' HDD+ SD Card,each max 2TB HDD + 128GB SD Card
USB	Support Two USB Port
Voltage	DC:+8V ~ +36V
Working Temperature	-20°C to +70°C
Playback	Max support 8CH Replay /Stop/Fast Forward/Fast Reverse at same time
TTS Voice Broadcast	Support
Image Quality	0-7 levels, 0 is the highest level
Size	180mm*53mm*170mm
Net weight	≤1000g
Network	Built-in EVDO/WCDMA/TD-LTE/FDD-LTE,etc, 3G/4G module.WIFI optional

Product description

- 1.Support Local Auto-photo when alarm input,device pictures preview function;
- 2.All Aviation connectors, Super stable, High Anti-shock,Easy installation Plug in and out
- 3.Support mobile phone remote monitoring, and 3G call function
- 4.Supporting the ministry of communications 808 agreement, extensible PTZ control, 5.POS, oil flow sensor, LED advertising screen, etc
- 6.Support GPS Signal Uploading Unremitting in 24 hours after Power Off;
- 7.Support Build-in TTS Voice Function, Public Bus-stop system (Extensible)
- 8.Support Hard Disk Heater Function - Work Temperature: -30°to 70°

Detail pictures

2MP 1080P AHD HDD+SD Card Mobile DVR MDRS5

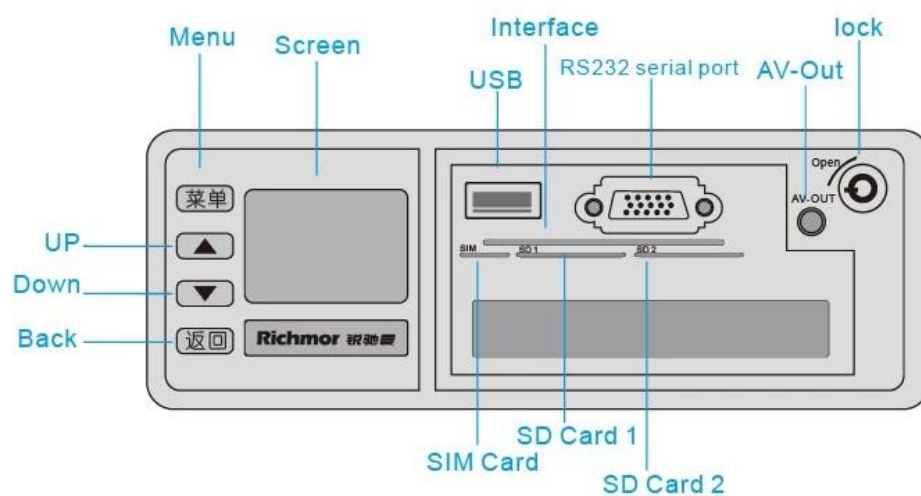


Richmor

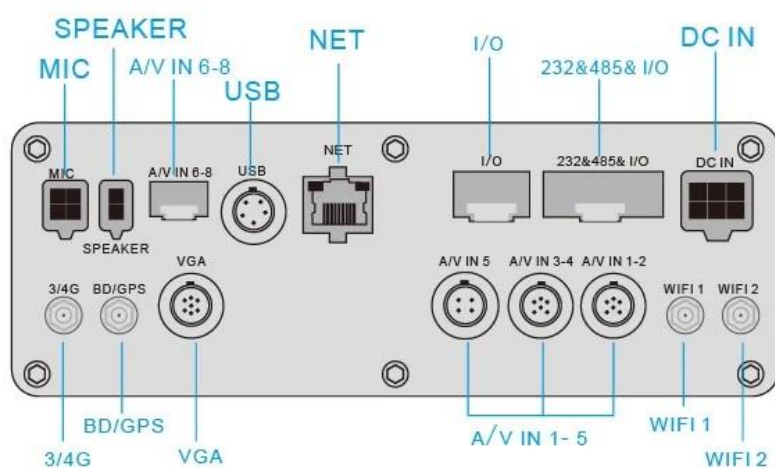
FOCUS ON MDVR SYSTEM BUILDING GLOBAL BRANDS



Front Panel



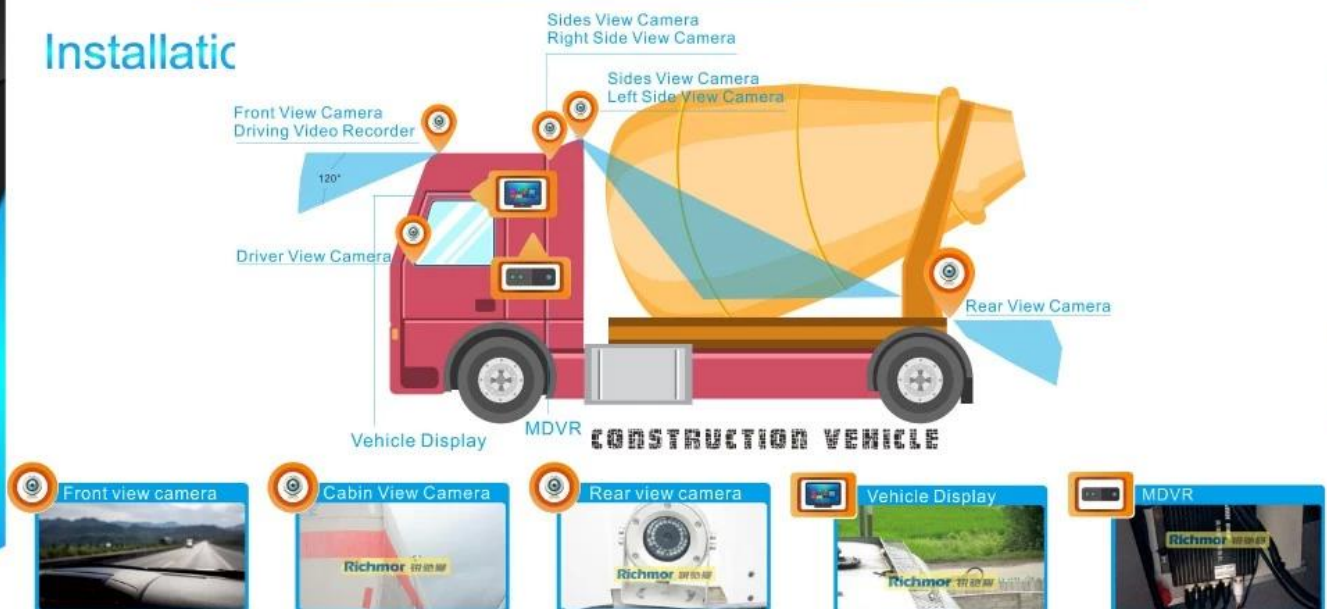
Back Panel

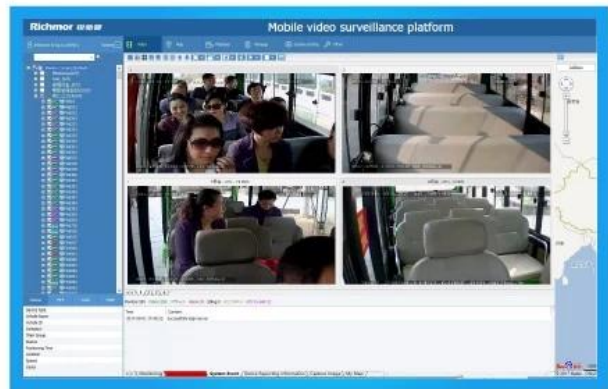


Installation



Installatic





Package content

1 Piece mobile DVR, per box with all standard accessories

RCM-MDR210 Parameter Sheet

Item	Parameter
------	-----------

OS		Linux
Language		Chinese/English/Customized
Video Compression		H.264
OSD		Overlays information such as date time and vehicle ID
GUI	Graphical User Interface	Setup system parameters with the remote control.
Video Record System	Video Input	4CH 720P AHD input/SD input/mixed video input, aviation connector, 1.0Vp-p, 75Ω
	Video Output	1CH CVBS+1CH VGA output, 1.0Vp-p, 75Ω,Aviation,Support 1CH Full Screen,4CH Screen
	Preview	Support 1 channel and 4 channels preview. Support Manual/Alarm Trigger full screen preview
	Resolution	720P/D1/HD1/CIF, MAX:4 channels 720P
	Video Quality	0-7 levels, 0 is the highest level.
	Video Standard	PAL: 100f/s , CCIR625 line,50field; NTSC: 120f/s, CCIR525 line,60field; CIF: 256Kbps ~ 1.5Mbps, 8 level video quality optional; HD1: 600Kbps ~ 2.5Mbps, 8 level video quality optional; D1: 800Kbps ~ 3Mbps, 8 level video quality optional; 720P: 4Mbps-6Mbps, multi level video quality optional
Audio	Record Mode	The default setting is auto recording after power on. Timed recording, alarm trigger recording and manual recording are supported.
	Audio Input	4CH ,Aviation Plug
	Audio Output	1CH,Aviation Plug
	Compression	G.726 compression, 8KB/s speed
Alarm Input		4Ch Alarm Input, kinds of alarm linkage support
Alarm Output		1CH Alarm Output
Communication interface		1CH RS232 or 1CH RS485 for optional
Position		Support Built GPS/BD Module, built in G-sensor, can replay and analyse vehicle driven route.
wireless transmission		Support Built-in 3G/4G wireless transmission function, WCDMA, CDMA2000, TDD-LTE, FDD-LTE....
Motion Detection		Support motion detection alarm. (Can set the video recording duration time after alarm on platform.)
G-Sensor		Support G-sensor
Storage	SD	Dual SD Card,each max 128GB SD Card loop recording
	Upgrade	Support SD Card remote updating
	File Format	H.264
	File System	Special FAT32 File System
Video Playback	Video Search	Search By Record Time/Record Type etc
	Playback	Max support 4CH Replay /Stop/Fast/Slow at same time Support forward and backward play at the speed of: x 2,x4,x8,x16.
Voltage & Power	Power Management	Wide Voltage.Support Timed/Delay off
	Voltage Input	DC:+8V ~ +36V
	Power Consumption	Normal Working □14W , Stand-by status < 0.5W
	Temperature	-20℃ to +70℃
Working Environment	Humidity	20% to 80%
	Password	User/Admin 2 Level Different Password

Security	Size	112(W) x36(H) x138(D) mm
others	Net Weight	360g

Richmor surveillance GUI

The main menu includes: Search, System setup, Rec setup, Network setup, Alarm setup, Peripheral setup, System Tools, System Information, as below:



Richmor Mobile DVR Mileage Summary

Vehicle Management System							
Welcome! 请客用户 Manager Exit							
Report Device User							
Mileage Summary							
Begin Time: 2016-01-08 00:00:00 To: 2016-01-08 16:27:09							
Device: All Devices Select Device Query Export To Excel Export To Csv Export To Pdf							
Mileage Summary							
Index	Vehicle	Total Mileage(KM)	Begin Time	Start Mileage(KM)	Start Position	End Time	End Mileage(KM)
1	鄂D3114	174.86	2016-01-08 08:00:30	22.95	22.524294, 114.008444	2016-01-08 16:25:41	157.83
2	鄂D3130	202.07	2016-01-08 07:30:17	18.1	22.584294, 112.882802	2016-01-08 16:25:28	171.57
3	24012	277.42	2016-01-08 07:09:55	23.41	23.389582, 116.675227	2016-01-08 14:57:24	300.63
4	鄂A78248	97.4	2016-01-08 00:00:25	236.97	41.572492, 116.788245	2016-01-08 06:42:38	41.09
5	24023	0	2016-01-08 00:00:07	16.28	37.158759, 120.731127	2016-01-08 16:19:07	16.28
6	鄂QF387	416.36	2016-01-08 08:09:54	96.88	35.481432, 117.843783	2016-01-08 16:28:11	92.83
7	鄂B81712	120.98	2016-01-08 04:48:43	26.51	36.876478, 117.681541	2016-01-08 14:25:07	144.92
8	鄂B8250	45.81	2016-01-08 00:00:03	138.13	22.654294, 112.488583	2016-01-08 16:15:15	115.82
9	鄂B5153	48.61	2016-01-08 00:00:27	82	22.654187, 112.487655	2016-01-08 16:11:28	73.72
10	鄂B5368	111.72	2016-01-08 00:00:15	145.61	22.654321, 112.488645	2016-01-08 16:24:48	93.9
11	鄂B5010	52.02	2016-01-08 00:00:10	83.24	22.654294, 112.487785	2016-01-08 16:15:55	57.82
12	鄂AK383	895.08	2016-01-08 00:00:29	354.36	36.950843, 117.658781	2016-01-08 16:24:44	1009.74
13	24058	224.42	2016-01-08 07:00:58	44.57	37.949786, 116.844073	2016-01-08 16:17:34	60.4
14	28998	2.36	2016-01-08 13:13:08	17.6	28.734423, 121.238947	2016-01-08 13:57:27	19.81
15	00588	369.29	2016-01-08 00:00:54	51.84	33.733305, 115.863821	2016-01-08 16:00:58	420.33

Player software interface

The screenshot displays a vehicle monitoring software interface. The main window features a map of China with a vehicle's location marked. A sidebar on the left lists various vehicles, including 'Monitor Center (2/12)', '00027', '00029', '00030', '00032', '00034', '00036', '00038', '00040', '00042', '00044', '00046', '00048', '00050', '00052', '00054', '00056', '00058', '00060', '00062', '00064', '00066', '00068', '00070', '00072', '00074', '00076', '00078', '00080', '00082', '00084', '00086', '00088', '00090', '00092', '00094', '00096', '00098', '00100'. Below the list, a table shows vehicle details: Status, FID, Color, and VOP. The main area displays a map with a vehicle's location marked. A sidebar on the right shows playback controls, including a timeline and a list of events. The interface is watermarked with 'rcmccctv.en.alibaba.com'.

Richmor actual case



Application

Widely used in passenger car,bus,taxi,school bus,lorry,dangerous vehicle, personal car and ship etc.



Travelling Bus



Public Bus



Dangerous chemical car



Tobacco Logistics



Taxi



Truck



School Bus



Express Logistics



Road Police Car



Border Car



Traffic Inspection Car



Civil Work Vehicle



Escort Vehicle



Ambulance



Fixed place monitor



Ship Monitor

Buying Guides

Packaging

1 unit with all standard accessories such as AV Cables/IO Cable/Power Cable/Key etc

Neutral paper box or Color paper box with Logo Richmor printed,also welcome customized package.



Richmor Brand Package

Standard Package

Cooperation Terms

Shipping Info

Estimated Shipping Time

- a. 3-5 working days after payment cleared for sample order.
- b. 5-10 working days after payment cleared depends on order quantity for bulk order.

Remarks:

- 1.Order will be dispatched before next 2 working day after full payment is done,48 hours aging time;
- 2.Related documents will be sent after order is dispatched,please check mail;
- 3.All parcels will be shipped by DHL/TNT/UPS/EMS/FedEx/Air etc according your option;

Payment Info

- 1.T/T;Western Union;Paypal optional;
- 2.30% deposit,balance be paid before delivery

Remarks:

Please sent bank slip when payment done,according this we will arrange the production

Warranty Info

Free Replacement:

Mobile DVR Recorder can replace free under conditions within 15 days after sale,in the precondition of our quality problem,non-artificial damage

Supplier Warranty:

We offer ONE YEAR warranty on Vehicle Mobile DVR Recorder,if your item has any warranty issue please contact us for a satisfying solution

Remark:

All qualified returns/replacement must be guided by us,we may not accept your return without informing us in advance

Service

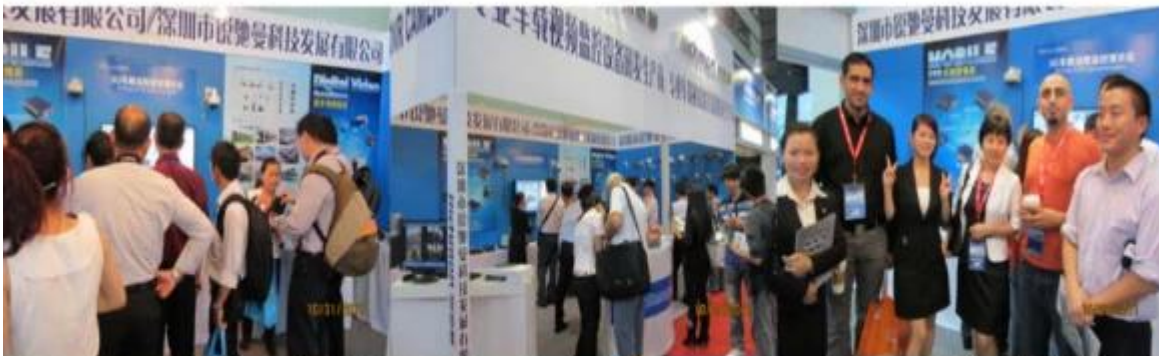
- 

- Excellent Aftersale service
- 12 months warranty
- 24 hours customer service
- We understand the importance of our customers

Exhibition

Richmor

CPSE2012 in Shenzhen



CPSE2013

10.29-10.31

4 Booth we have

Welcome you !!!



CPSE2012-- Guangdong TV Report-Shenzhen Richmor



About us & Customers:





EXCELLENT SUPPORT



Skype: rcmcctvsales2