

256GB sd card 4G mobile dvr with gps wifi AP function

Main Feature:

1. 4 channel SD card Mobile DVR
2. Support 3G, GPS, WIFI, G-sensor, UPS function
3. Support PTZ remote control
4. Support real-time surveillance
5. Supports SD overwritten by days
6. Supports backup and upgrade with SD card
7. Self recovery after power reconnected
8. Stable aluminum alloy structure with shock absorber

Pictures





Specification:

Items	Device parameters	Performance index
Name	Product Name	4 Channel Mobile DVR(SD Storage)
System	Operation System	Linux
	Operation Interface	Graphical Interfaces, Chinese/English optional
	File System	Proprietary Format
	System Privileges	User Password
Video	Video Input	4ch SDI Independent Input: 1.0Vp-p \square 75 Ω .Both B&W and Color Cameras
	Video Output	1 Channel PAL/NTSC Output, 1.0Vp-p \square 75 Ω Composite Video Signal
	Video Display	1 Or 4 Screen Display
	Video Standard	PAL:25frames/Sec;NTSC:30frames/Sec
	System Resources	PAL:100 Frames; NTSC:120 Frames
Audio	Audio Input	Four Channels Independent Input 500 Ω
	Audio Output	1 Channel(4 Channels Can Be Convert Freely)
	Basic Output Level	1.0—2.2V
	Distortion Plus Noise	\leq -30dB
	Recording Mode	Sound And Image Synchronization
	Audio Compression	ADPCM
Alarm	Alarm in	4 Channels Independent Input. High Voltage Trigger
	Alarm out	2 Channels Independent output
	Move Detect	available
Network Interface	Wire line Access	Can Expand One RJ45 Ethernet Port
	Wifi	Can Expand One Wifi Module Inside
	3G	Can Expand One WCDMA or CDMA2000 Module Inside
GPS Interface	GPS	Can Expand GPS Module inside
Extend Interface	Intercom	Can Expand Intercom Module Inside
	G-Sensor	Can Expand G-Sensor Module Inside

Others	Power Consumption	DC8-36V 5% ≤10W
	Working Temperature	-20°C ~ +85°C ≤80%
	Clock	Built-In Clock, Calendar
Packaging	Product Size	138(L)*112(W)*36(H)mm
	Product Net Weight	360g

Our CMS software For Windows PC real-time Surveillance

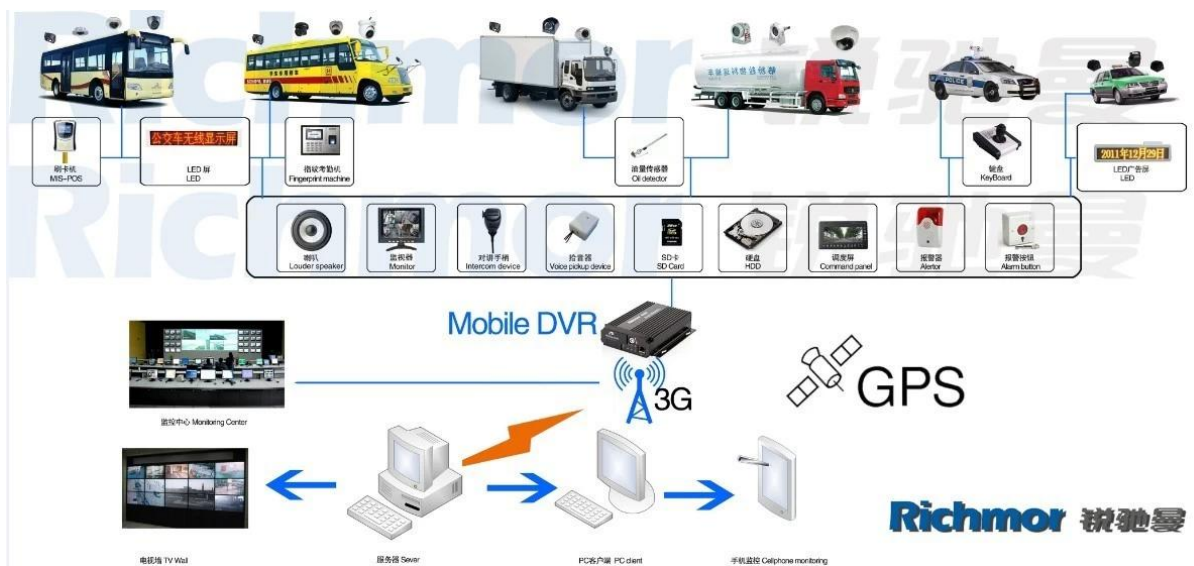
**Vehicle with device for test in AC Coach
Lahore to Sadiq Abad near motorway @ 86Km/h**

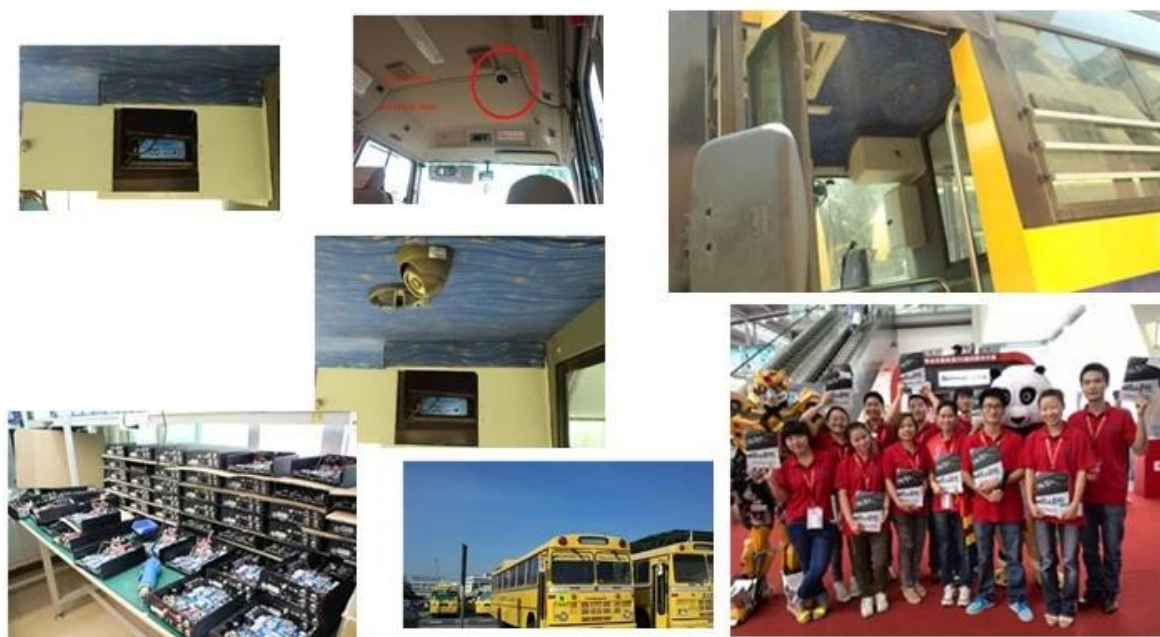
The screenshot displays the CMS software interface for real-time surveillance. The main window features a Google Map of Lahore, Pakistan, with a vehicle icon indicating the current location. A pop-up window provides detailed information for the tracked device (ALI01), including its time, speed (86.00 km/h), position (Katar Bund Road, Lahore, Pakistan), and alarm status (ACC ON, SD Card Exist, 3G Signal Normal). The interface also includes a top menu bar with options like Map, Video, Track, Record, and Other. On the right side, there are three video feeds showing the vehicle's interior and exterior. At the bottom, a status bar shows monitoring and alarm information.

For IOS & Android OS Mobile Phone Surveillance



Our Mobile DVR project for vehicles





 Verification of Conformity Reference No.: L2/034030/07	
Responsible Party	Shenzhen Richstone Technology Development Co., LTD.
Address	3/F A-10 West Longgang Road, Longgang New District, Shenzhen, China
Product	Cameras
Model No.	RIC-PD2H, RIC-PD2H, RICH-PDCH, RICH-PDCH, RIC-BP2H, RIC-BP2H, RIC-BL, RIC-BL, RIC-AHS, RIC-AHS, RIC-ABS, RIC-ABS, RIC-BD2H, RIC-BD2H, RIC-BS2H, RIC-BS2H
Trade Mark	RichStone
Standards	FCC CFR 47 Part II Subpart B, 301F, ANSI C63-A-2008
Important note: This Service is in accordance with Part 14 of the FCC Rules and Regulations for radio frequency devices. Declaration of RF compliance is subject to the following conditions: (1) this service may cause harmful interference, and (2) the device must accept any interference received, including interference that may cause undesired operation. We intend to conform to the applicable FCC Rules and Regulations. The method of testing was in accordance to the most accurate measurement standards possible, and that all necessary steps have been enforced to ensure that an evaluator copy of the report agreement will continue to comply with the Federal Communications Commission's requirements.	
 Signature April 10, 2010	
Shenzhen L2C Compliance Testing Laboratory Ltd. 1/F, Angang Industrial Park, Tangbu Street, Bao'an Dist., Shunde District, Shenzhen Guangdong, China Tel: (86)755-82591100 Fax: (86)755-82591010 Web: www.L2C.com.cn E-mail: shenzhen_l2c@163.com	

Purchasing Details:

Payment terms: T/T, Western Union, MoneyGram, Paypal

Delivery time: Within 5 working days after confirm the payment.

Warranty: 12 months

Shipping way: DHL, UPS, FedEx, EMS, TNT etc.

Packing way:



remcctv.en.alibaba.com
brand Packing & Blister Packing



After-sales Service:

1. After you receive our products, we will assist you to realize how to use it.
2. Offer you the software if you use our mobile DVR.
3. Twelve months warranty
4. During our warranty, if you have any problem, we can help you to solve it.
5. During our warranty, you can return to us to repair it.



Richmor

OEM & ODM Service

Brasil World Cup Supplier



Inner Training after study from Alibaba in July



Technical Training For Fast Response to Customer Richmor 锐驰曼



lecturer for Execution

Email: overseasales-2@rcmcctv.com

Skype: [rcmcctvsales2](https://www.skype.com/name/rcmcctvsales2)

QQ: 2355778097

Website: www.rcmcctv.com, <http://www.richmor.net>, www.rcmcctv.com

[.en.alibaba.com](https://www.en.alibaba.com)

MB: +86 18929314790