

3G 4G 1080p 2tb hdd VGA 5ch  
dvr Remote

RCM-MDR 7105

1CH IPC Remote 3G 4G GPS WIFI 5CH HDD DVR



## 功能特点 Features



实时监控, GPS定位  
Real-time monitoring,  
GPS positioning

身份验证, 人数统计  
Two-factor authentication



语音功能 Voice features



行车记录, 驾驶行为管理  
Driving behavior management



短信提醒  
Assured SMS alerts



偏离报警  
Yaw alarm

采用高压比, 图像清晰的H.264编码格式, 支持开机录像、定时录像及报警录像, 支持ACC熄火延时录像。内置GPS全球定位系统, 可通过3G网络远程查看实时视频, 车辆位置, 回放历史录像。支持手机远程监控。Adopting H.264 Video compression with high resolution, ACC on/off, Timer Recording, ACC Delay Recording Mode supported. Built-in GPS Tracking system, Real time video stream, Vehicle Position, Video Replay can be viewed through 3G Network, Support Mobile Phone remote Monitor.

可直接刷卡验证身份, 统计数据, 避免人工统计时出现失误。提供每个停靠站点实时的上下学生人数, 避免漏接学生, 以及把学生遗留在车内, 造成事故。Combine with Card Equipment for authenticate information and counting, avoid artificial statistical mistake, offer the students get on/off real time number at each station, avoid the accident caused by missing students or leaving students in the carriage.

可进行语音电话, 网络对讲, 声音广播。实现管理中心和车辆即时通讯。Support VOIP, 3G Intercom, Broadcast realize Center office communicate with Driver in real time.

对司机的不良行为进行监督, 比如经常超速、急加速、急减速、急刹车等容易对车内学生造成危险的行为; 并对其进行评测, 预防安全隐患发生。Supervise driver's bad behavior, such as: over-speed, acceleration, decelerate urgently, brakes etc dangerous behavior for students, Driver's Performance evidence.

车载智能系统会根据需要向家长发送孩子上下车短信, 包括什么时间、在哪里上车及下车, 让家长及时、快捷的了解学生安全状况, 有利于学生接送时间的精确控制。Intelligent vehicle system, students get on/off bus information sent to parents by SMS including When and where on/off, convenient for parents to know students status and easily for picking up students.

预先设定校车的固定行驶路线, 当校车未按照预定的行驶路线行驶时, 中心上会自动发出语音报警, 中心可与车载终端通过语音对讲进行通讯。Geo Fence Alarm, preset driving route, when out of the line it will sound alarm automatically at center office, center can talk with the driver for the information.



Romote 3G 4G 5ch GPS WIFI HDD DVR / NVR 1 CH IPC

**Richmor**

 **Factory Audit**

**SMS Device configure**  
**OTA Remote Updating**  
**AHD 720P/960P**  
**2TB HDD+128GB SD Card**

**NEW**



CE

FC



**Remote 3G 4G 5ch GPS WIFI HDD DVR / NVR 1 CH IPC**

**Richmor**

 **Factory Audit**

**SMS Device configure**  
**OTA Remote Updating**  
**AHD 720P/960P**  
**2TB HDD+128GB SD Card**

**NEW**



□□□□

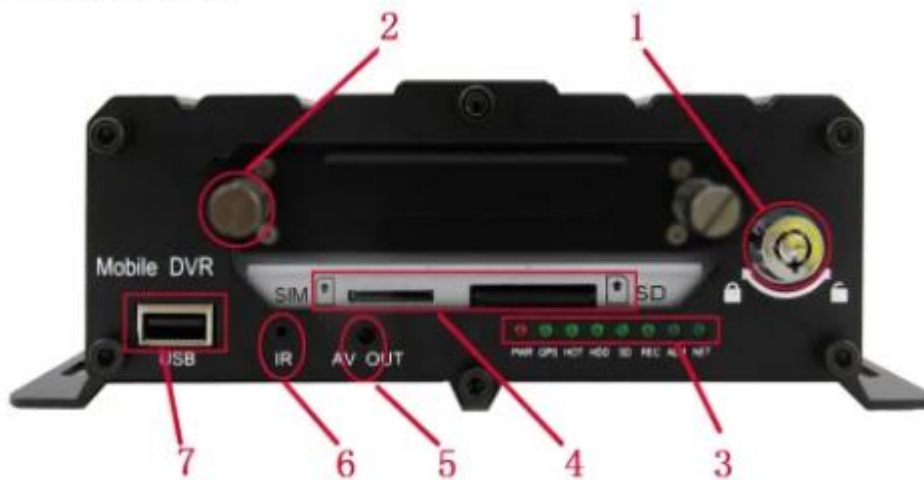
**Remote□□□□3G 4G 5ch GPS WIFI HDD□□□□DVR / NVR 1 CH IPC**



H.264 Compression Mode, Max support 5CH Million pixels HD video surveillance/ recording/ playback (4CH real-time 720P Million Pixels AHD input or 4CH Analog Standard Definition camera input, or 2CH HD input+2CH SD input) + 1CH 1080P IP Camera input ; Exclusive pre-allocate DVR Special File System Technology,Solving repeatedly wipe cause file fragmentation, solving SD card file system collapse, data loss and cannot find SD card and file garbled, ensure the integrity of the data. 8-36V Adaptive Wide Voltage input, Super Low Power Consumption Design;HDD+SD card storage (maximum support 2TB 2.5" hard disk and 128GB SD card. ) It can be completely resist car Vibration,Dust and others cause data corruption; Support GPS/BD/G-SENSOR ; High Reliability Aviation Connectors,High Cost Performance with reliable stability,simple and clear operation menu .

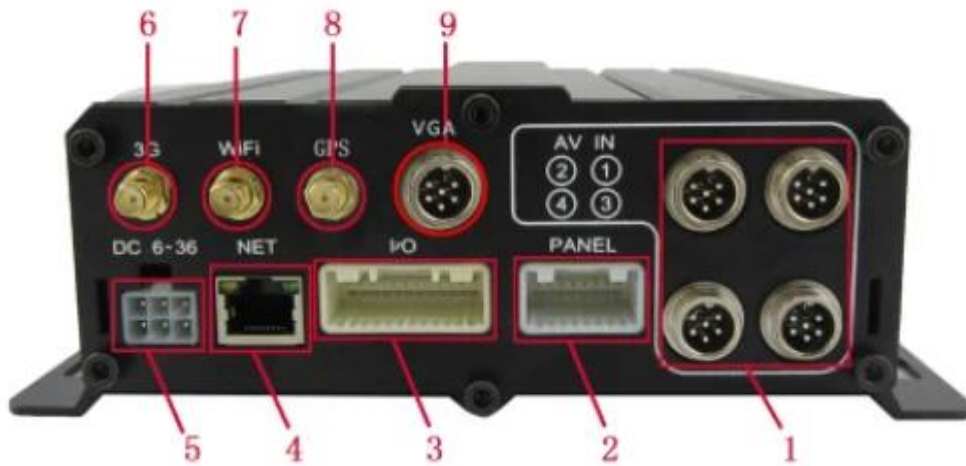
**Remote 3G 4G 5ch GPS WIFI HDD Mobile 1CH IPC DVR / NVR**

**Front LED Indicators**



**Remote 3G 4G 5ch GPS WIFI HDD DVR / NVR 1 CH IPC**

## Back Panel IO Indicators



## Richmor GUI

The main menu includes: Search, System setup, Rec setup, Network setup, Alarm setup, Peripheral setup, System Tools, System Information, as below:



# RCM-MDR7105

OS	Linux	
OSD	OSD ID	
GUI	GUI	GUI
Input	Video	4CH 720p HD / 4CH / 2CH + 2CH HD + 1CH 1080P 1.0Vp-p 75Ω
	Video	1.0Vp-p 2CH CVBS + 1CH VGA 75Ω 1CH 4CH
	Audio	1 4 5 / 8
	Resolution	1080P / 720P / D1 / HD1 / CIF MAX 4 720P + D1 1080P / 4
	Frame Rate	1-4 1
	Frame Rate	PAL 100f / s CCIR625 50 NTSC 120f / s CCIR525 60 CIF 256Kbps 1.5Mbps 8 HD1 600Kbps 2.5Mbps 8 D1 800Kbps 3Mbps 8 720P 4Mbps-6Mbps
Output	Video	4CH
	Video	2CH BNC
	Audio	G.726 8KB /
Audio	7CH 1CH AD	
Audio	2CH /	
I/O	3CH RS232 POS / LED	
	2CH 485 PTZ	
Network	3G WCDMA CDMA2000 GPRS EDGE; 4G TDD-LTE FDD-LTE	
GPS	GPS / BD	
	HDD	2.5 HDD

SD	SD	128GB SD
	USB	USB SD OTA
	Codec	H.264
	File System	FAT32
USB	USB	USB U
Audio	Channels	4CH / 2CH
	Outputs	4CH / 2CH / 1CH
	Formats	x2 x4 x8 x16
Video	2	2
Features	TTS	TTS
	LED	LED
	POS/OBD	POS OBD
Power	Voltage	Voltage. Support Timed / Delay off /
	DC	DC + 6V + 36V
	Power	<5W
Temp	Temp	-20°C + 70°C
	Humidity	20% 80%
Size	Dimensions	200D x 187W x 62H mm
	Weight	1.90kg

### Features

- 4CH 720p HD / 4CH / 2CH & 2CH + 1CH 1080P 5CH
- 3CH 2CH CVBS 1CH VGA 3. DVR
- 8-36V 10Amps 12V & 5V



5. 支持UPS不间断电源8-10小时

6. HDD + SD卡存储2.5 "HDD 128G SD卡及; USB接口

7. 2个USB接口

8. 9CH摄像头1CH摄像头+ 8CH IO接口2CH接口

支持2 CAN接口

10. 支持HDD存储

11. GPS / BD / GPRS

12. 3G / 4G网络

13. 支持/摄像头/摄像头; 摄像头/摄像头/ POS / LED

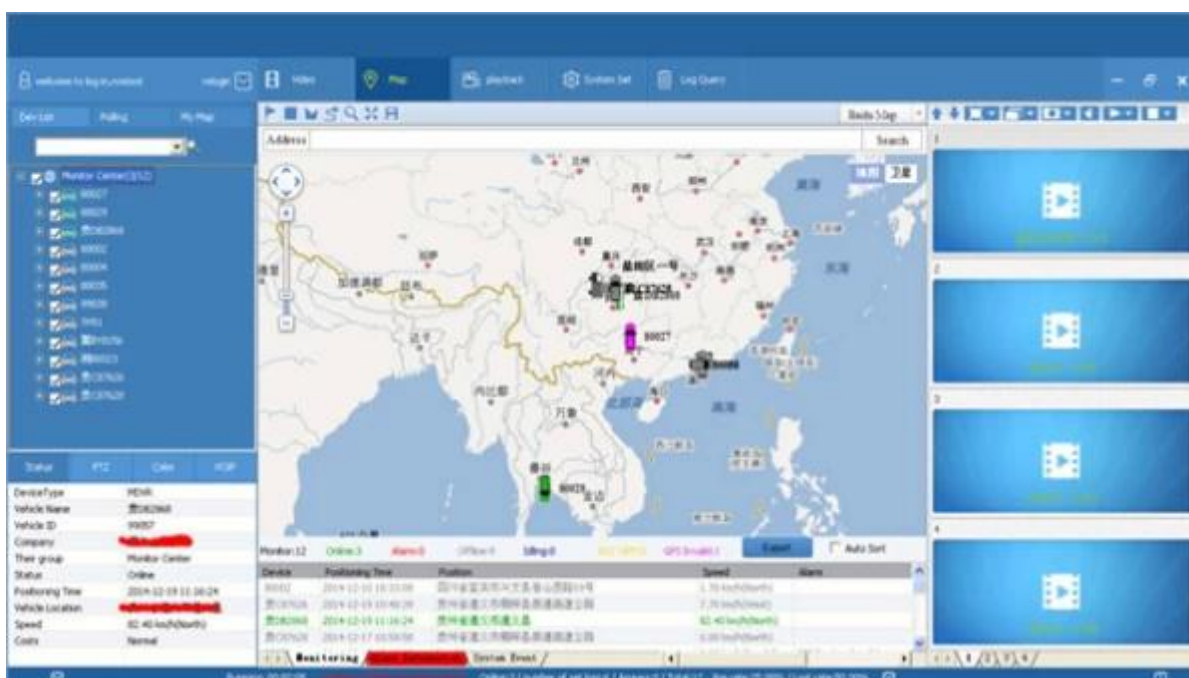
14. 支持OTG接口

15. 支持IOS / Android

16. 支持

支持PC CMSV6

## 支持CMSV6





**File**  **Video**

Directory: C: | Select Folder

Time Range: ALL | 0-2 | 2-4 | 4-6 | 6-8 | 8-10 | 10-12 | 12-14 | 14-16 | 16-18 | 18-20 | 20-22 | 22-24 | Search

Event Type:  All |  I/O\_1 |  I/O\_2 |  I/O\_3 |  I/O\_4 |  I/O\_5 |  I/O\_6 |  I/O\_7 |  I/O\_8 |  Emergency Button Alarm

2015

Dec

Sun Mon Tue Wed Thu Fri Sat

0 1 2 3 4 5

6 7 8 9 10 11 12

13 14 15 16 17 18 19

20 21 22 23 24 25 26

27 28 29 30 31

Description, Begin, Duration, Event Type

Groups: 1 | Pages: 1 | < > >> | 1 | Go

00:00 02:00 04:00 06:00 08:00 10:00 12:00 14:00 16:00 18:00 20:00 22:00 24:00

All

1

2

3

4

## Richmor

**Vehicle Management System** Welcome | 관리자 | Exit

**Report** | Device | User

**Mileage Summary**

Begin Time: 2016-01-08 00:00:00 | To: 2016-01-08 16:27:09

Device: All Devices | Select Device | Query | Export To Excel | Export To CSV | Export To PDF

Index	Vehicle	Total Mileage (KM)	Begin Time	Start Mileage (KM)	Start Position	End Time	End Mileage (KM)
1	☎EX3114	174.88	2016-01-08 09:03:32	22.95	22.52434, 114.00844	2016-01-08 16:25:41	157.83
2	☎EX3130	202.07	2016-01-08 07:33:17	18.1	22.88429, 112.89282	2016-01-08 16:25:28	171.57
3	24312	277.42	2016-01-08 07:08:55	23.41	23.36882, 116.675227	2016-01-08 14:57:24	300.83
4	☎AT8248	97.4	2016-01-08 00:00:25	299.97	41.57248, 118.788245	2016-01-08 09:42:38	41.09
5	24323	0	2016-01-08 00:00:07	18.26	37.75879, 120.731127	2016-01-08 16:19:07	18.26
6	☎YS307	416.36	2016-01-08 06:08:54	96.66	35.46142, 117.643793	2016-01-08 16:20:11	82.63
7	☎J17112	120.98	2016-01-08 04:48:40	28.51	35.87647, 117.681843	2016-01-08 14:25:07	144.92
8	☎NS250	45.61	2016-01-08 00:00:03	139.13	22.65429, 112.488993	2016-01-08 16:15:15	115.82
9	☎NS153	48.61	2016-01-08 08:00:27	92	22.654197, 112.497865	2016-01-08 16:11:28	73.72
10	☎NS368	111.72	2016-01-08 00:00:15	145.61	22.654321, 112.488645	2016-01-08 16:24:48	93.9
11	☎NS110	52.02	2016-01-08 00:00:10	93.24	22.65429, 112.487795	2016-01-08 16:15:55	57.92
12	☎A3883	855.08	2016-01-08 00:00:29	354.36	35.95843, 117.658700	2016-01-08 16:24:44	1009.74
13	24358	224.42	2016-01-08 07:00:58	44.57	37.94878, 118.844370	2016-01-08 16:17:34	60.4
14	28999	2.38	2016-01-08 13:13:09	17.6	28.73442, 121.235817	2016-01-08 13:57:27	19.66
15	01566	369.29	2016-01-08 00:00:54	51.04	33.73305, 115.868921	2016-01-08 16:03:58	420.33











AV Input Cables



AV Output Cable



IO Cables



Power Cable



Remote Control



CD ( Manual & Software inside)

□□



Richmor Brand Package



Standard Package



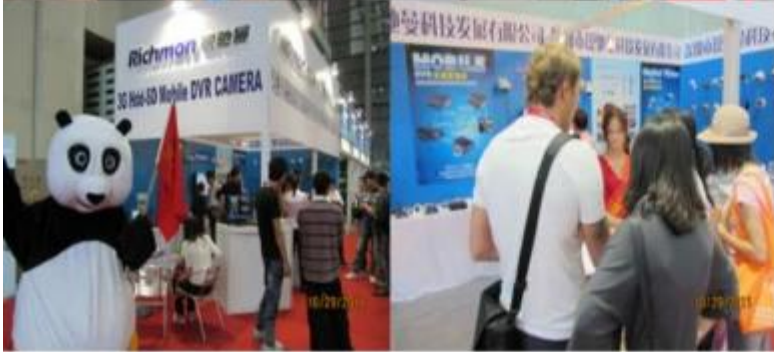
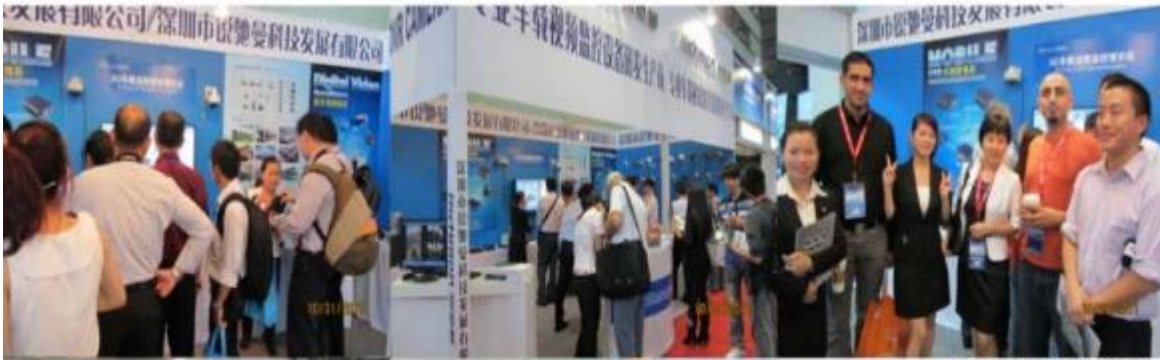
# Certification



□□□□□□&□□□□

# Richmor

## CPSE2012 in Shenzhen



CPSE2013

10.29-10.31

4 Booth we have

Welcome you !!!



### CPSE2012-- Guangdong TV Report-Shenzhen Richmor



□□□□□□□□







