

## 摄像机

|            |                    |
|------------|--------------------|
| 镜头         | 400万像素2毫米2毫米2毫米    |
| 编码         | H.264              |
| 网络         | 3G / 4G & WIFI     |
| 定位         | GPS / BD           |
| <b>存储</b>  | 存储G                |
| 系统         | Linux              |
| 电压         | 6V 36V             |
| 存储         | 2SD SD 128GB       |
| <b>USB</b> | USB                |
| <b>TTS</b> |                    |
| 接口         | 1                  |
| 协议         | 1 ch RS232 1 RS485 |

## 摄像头

摄像机  
摄像机  
6  
1 1 1 WiFi AP  
Bluetooth Bluetooth  
WiFi AP 5  
GPS  
16  
3G / 4G  
G  
1  
8 11  
2 SD 128GB

## 摄像头

摄像机 DVR ----- BK6



**Richmor**

# FOCUS ON MDVR SYSTEM BUILDING GLOBAL BRANDS





## Front Panel



Rear Camera

360° 3V Rotating

## Side View



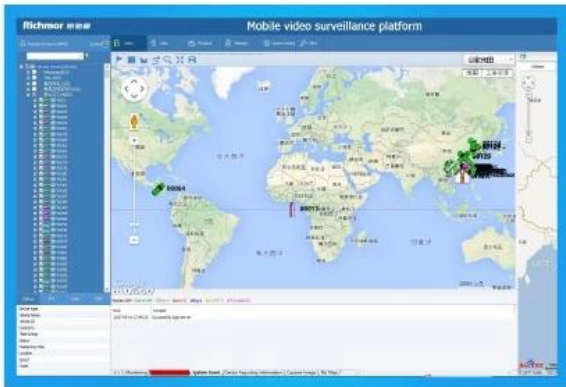
## Back Panel

Stick upon  
window glass



Front Camera  
120° Rotating





□□□□□□

1□□□□□□DVR□□□□□□□□□□□□□□□□□□1□

**RCM-MDR210**□□□□□□□□

|    |       |
|----|-------|
| □□ | □□□□  |
| OS | Linux |

|             |  |  |
|-------------|--|--|
| □□          |  | □□□/□□/□□□□□□  |
| □□□□□       |  | H.264  |
| OSD         |  | □□□□□□□ID□□□□□□□□□□  |
| GUI         | □□□□□□□□□□□□□□□□□□<br>□  | □□□□□□□□□□□□□□□□□□   |
| □□□□□□□□□   | □□□□□  | 4CH 720P AHD□□/ SD□□/□□□□□□□□□□<br>□□□□□□□1.0Vp-p□75Ω  |
|             | □□□□□  | 1CH CVBS + 1CH VGA□□□□1.0Vp-p□<br>75Ω□□□□□□□□1CH□□□□□□□□4CH□□□□□□  |
|             | □□□□□  | □□□□1□□□□□□□4□□□□□□□□□□□□<br>□□□□□□□□□□/□□□□□□□□□□□□□□□□□□□□□□   |
|             | □□   | 720P / D1 / HD1 / CIF□MAX□4□□□□□□720P  |
|             | □□□□□  | 0□7□□□□□0□□□□□□□□□□□□  |
|             | □□□□□  | PAL□100f / s□CCIR625□□□□□50□□□□□□□□<br>NTSC□120f / s□CCIR525□□□□□60□□□□□□□□<br>CIF□256Kbps□1.5Mbps□□□□□□□□8□□□□□□□□□□<br>HD1□600Kbps□2.5Mbps□□□□□□□□8□□□□□□□□□□<br>D1□800Kbps□3Mbps□□□□□□□□8□□□□□□□□□□<br>720P□4Mbps-6Mbps□□□□□□□□□□□□□□□□□□□□□□ |
| □□□□□       | □□□□□□□□□□□□□□□□□□□□□□□□<br>□□□□□□□□□□□□□□□□□□□□□□□□<br>□□□□□□□□□□□□□□□□□□□□□□□□ |  |
| □□□□□       | □□□□□  | 4CH□□□□□□□□  |
|             | □□□□□□□□   | 1CH□□□□□□□□  |
|             | □□   | G.726□□□8KB /□□□□□   |
| □□□□□□□     |  | 4Ch□□□□□□□□□□□□□□□□□□□□□□□□□□  |
| □□□□□□□     |  | 1CH□□□□□□□□  |
| □□□□□□□□□□□ |  | □□□□□□1CH RS232□□□□1CH RS485   |
| □□□□□       |  | □□□□G□□□□□□GPS / BD□□□□□□□□□□□□<br>□□□□□□□□□□□□□□□□□□□□□□□□□□□□  |
| □□□□□       |  | □□□□□□□□3G / 4G□□□□□□□□□□□□<br>WCDMA□CDMA2000□TDD-LTE□FDD-LTE ....   |
| □□□□□       |  | □□□□□□□□□□□□□□□□□□□□□□□□□□<br>□□□□□□□□□□□□□□□□□□□□□□□□□□□□□□   |
| G□□□□       |  | □□□□G□□□□□   |
| □□□□□□      | SD   | □□□□SD□□□□□□□□128GB SD□□□□□□□□□□   |
|             | □□□□□□□□   | □□□□SD□□□□□□□□□□□□□□□□   |
|             | □□□□□□□□   | H.264  |
|             | □□□□□□□□   | □□□FAT32□□□□□□□□□□   |
| □□□□□□□     | □□□□□  | □□□□□/□□□□□□□□□□□□□□   |
|             | □□   | 4CH□□□□□/□□□□□/□□□□□/□□□□□□□□□□<br>x 2□x4□x8□x16□□□□□□□□□□□□□□□□□□□□□□   |

|                 |                       |                           |
|-----------------|-----------------------|---------------------------|
| Power & Voltage | Power                 | Support Timed / Delay off |
|                 | Voltage               | DC + 8V + 36V             |
|                 | Power Consumption     | <14W                      |
|                 | Operating Temperature | -20°C + 70°C              |
| Dimensions      | Size                  | 20x80x                    |
|                 | Weight                | 360g                      |
| Resolution      | 1120x360              | Richmor GUI               |
| Material        | 112mm x 36mm x 138mm  |                           |

000

The main menu includes: Search, System setup, Rec setup, Network setup, Alarm setup, Peripheral setup, System Tools, System Information, as below:



hm 000000ile DVR Mileage S 0000



- Report
- Quick Report
- Mileage Summary
- Mileage Daily
- Track Detail
- Speed Report
- Online Summary
- ID Alarm Report
- Alarm Report
- Storage Report
- Upgrade Report
- Fuel Report
- Park Report
- Geo Fencing Report
- 3G Flow Report
- Extend Report
- Dispatch Report

### Mileage Summary

Begin Time: 2016-01-08 00:00:00 To: 2016-01-08 16:27:09

Device: All Devices [Select Device] [Query] [Export To Excel] [Export To Csv] [Export To Pdf]

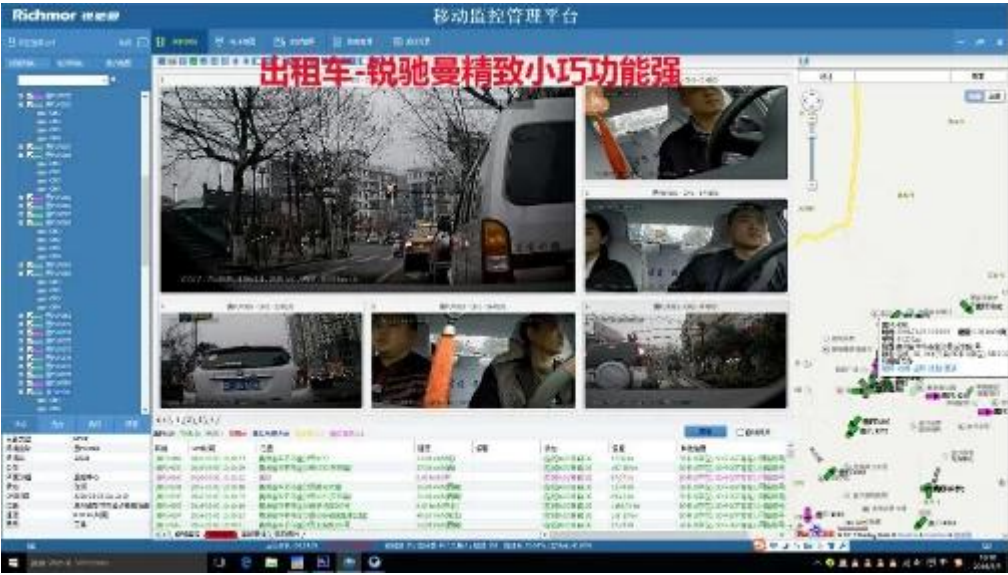
#### Mileage Summary

| Index | Vehicle | Total Mileage(KM) | Begin Time          | Start Mileage(KM) | Start Position        | End Time            | End Mileage(KM) |
|-------|---------|-------------------|---------------------|-------------------|-----------------------|---------------------|-----------------|
| 1     | 鄂D3114  | 174.86            | 2016-01-08 08:00:30 | 22.95             | 22.52429, 114.00644   | 2016-01-08 16:25:41 | 157.83          |
| 2     | 鄂D3130  | 202.07            | 2016-01-08 07:30:17 | 18.1              | 22.86429, 112.88282   | 2016-01-08 16:25:28 | 171.57          |
| 3     | 24012   | 277.42            | 2016-01-08 07:09:55 | 23.41             | 23.369582, 116.675227 | 2016-01-08 14:57:24 | 300.63          |
| 4     | 鄂A78248 | 97.4              | 2016-01-08 06:00:25 | 298.97            | 41.572492, 116.788245 | 2016-01-08 06:42:36 | 41.09           |
| 5     | 24023   | 0                 | 2016-01-08 06:00:07 | 16.26             | 37.158159, 120.731127 | 2016-01-08 16:19:07 | 16.26           |
| 6     | 鄂QF5387 | 416.36            | 2016-01-08 06:09:54 | 98.88             | 35.481432, 117.643783 | 2016-01-08 16:28:11 | 92.83           |
| 7     | 鄂B1712  | 120.98            | 2016-01-08 04:48:43 | 26.51             | 36.876478, 117.681941 | 2016-01-08 14:25:07 | 144.92          |
| 8     | 鄂B2250  | 45.81             | 2016-01-08 00:00:03 | 138.13            | 22.654294, 112.489583 | 2016-01-08 16:15:15 | 115.82          |
| 9     | 鄂B5153  | 48.64             | 2016-01-08 06:00:27 | 82                | 22.654187, 112.487565 | 2016-01-08 16:11:28 | 73.72           |
| 10    | 鄂B5268  | 111.72            | 2016-01-08 06:00:15 | 145.61            | 22.654221, 112.488445 | 2016-01-08 16:24:48 | 93.9            |
| 11    | 鄂B5033  | 52.02             | 2016-01-08 06:00:10 | 83.24             | 22.654236, 112.487785 | 2016-01-08 16:15:55 | 57.82           |
| 12    | 鄂A43683 | 695.08            | 2016-01-08 00:00:29 | 354.36            | 36.950643, 117.688781 | 2016-01-08 16:24:44 | 1089.74         |
| 13    | 24058   | 224.42            | 2016-01-08 07:00:58 | 44.57             | 37.949788, 116.844073 | 2016-01-08 16:17:34 | 60.4            |
| 14    | 28999   | 2.36              | 2016-01-08 13:13:09 | 17.6              | 28.734423, 121.238947 | 2016-01-08 13:57:27 | 19.81           |
| 15    | 00588   | 369.29            | 2016-01-08 00:00:54 | 51.84             | 33.733305, 115.863821 | 2016-01-08 16:00:58 | 420.33          |

yer Richmor

The screenshot shows a vehicle monitoring software interface. At the top, there's a navigation bar with 'Welcome to log in', 'Home', 'Map', 'Playback', 'System Set', and 'Log Query'. Below this is a sidebar with a 'Dev List' and a tree view of 'Monitor Center(242)'. The main area features a map of China with a vehicle location marked. A large watermark 'rcmccctv.en.alibaba.com' is overlaid on the map. On the right, there are four video playback windows. At the bottom, a data table displays vehicle information:

| Monitor ID | Online | Alarm | Offline | Signal | GPS | Speed      | Alarm |
|------------|--------|-------|---------|--------|-----|------------|-------|
| 鄂D3114     | Online | 0     | 0       | 0      | 0   | 1.70 km/h  | 0     |
| 鄂D3130     | Online | 0     | 0       | 0      | 0   | 7.70 km/h  | 0     |
| 鄂B2250     | Online | 0     | 0       | 0      | 0   | 82.40 km/h | 0     |
| 鄂B5153     | Online | 0     | 0       | 0      | 0   | 0.00 km/h  | 0     |



G

AV/IO/



Richmor Brand Package

Standard Package

a 35

b 5 10

1. 2 48

2. 請提供詳細的聯絡資訊，包括電話號碼、傳真號碼、電子郵件地址及公司名稱。

3. 請提供您的運輸方式：DHL / TNT / UPS / EMS / FedEx / Air 或海運。

謝謝！

## 1. T / T; 銀行匯票; Paypal 均可;

2.30 天內交貨

品質

請提供您的詳細地址，包括郵政信箱號碼、城市、州、國家及郵政編碼。

謝謝！

歡迎！

請提供 **DVR** 的詳細規格，包括型號、容量及 **15** 天內交貨。

謝謝！

請提供您的詳細地址，包括郵政信箱號碼、城市、州、國家及郵政編碼。 **DVR** 型號 **1** 天內交貨。

謝謝！

請提供您的詳細地址，包括郵政信箱號碼、城市、州、國家及郵政編碼。

謝謝！

## 1. 請提供您的詳細聯絡資訊，包括電話號碼、傳真號碼、電子郵件地址及公司名稱。

2. OEM / ODM 均可





## CUSTOMER SATISFACTION

- Excellent Aftersale service
- 12 months warranty
- 24 hours customer service
- We understand the importance of our customers

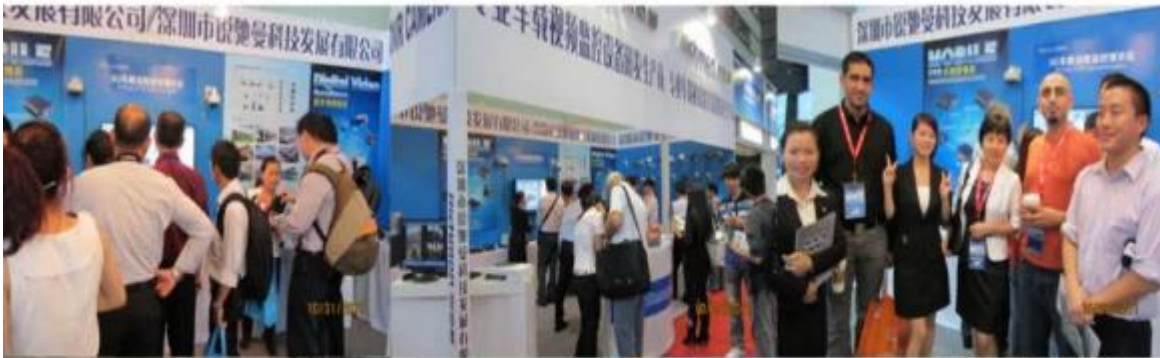


# Certification



# Richmor

## CPSE2012 in Shenzhen



CPSE2013

10.29-10.31

4 Booth we have

Welcome you !!!



### CPSE2012-- Guangdong TV Report-Shenzhen Richmor



Skype [rcmcctvsales2](https://www.skype.com/en/contacts/voice/r/mcctvsales2)







**EXCELLENT SUPPORT**

