

RCM-MDR301WDG DVR 4CH LAN GPS H.264 SD 3G DVR

RCM-MDR301WDG

特點

- 1. 4路SD卡DVR
- 2. 3G GPS LAN GPRS UPS
- 3. PTZ
- 4. 遙控
- 5. SD卡
- 6. SD卡
- 7. recovery
- 8. 8路

規格



RF Parameters	Frequency	4G LTE FDD Band 4
	Bandwidth	10 MHz
	Power	1.0-2.2V
	Antenna	≤ -30dBm
	Modulation	QPSK
	Encoding	ADPCM
Network	Network Type	4G LTE FDD Band 4
	Cellular	2G GSM
	Cellular	3G WCDMA
Connectivity	Wireless	WiFi
	LAN	LAN
	3G	3G WCDMA
GPS	GPS	GPS
	GPS	GPS
Power	Power	DC8-36V
	Power	-20°C ~ 85°C
Dimensions	Dimensions	138mm × 112mm × 36mm
	Weight	360g

Vehicle CMS

The screenshot displays the Vehicle CMS software interface. At the top, a blue banner reads "Vehicle with device for test in AC Coach Lahore to Sadiq Abad near motorway @ 86Km/h". Below this, there is a navigation bar with icons for Map, Video, Track, Record, and Other. The main area features a Google Map of Lahore, Pakistan, with a red location pin for "ALI01" on Katar Bund Road. A pop-up window for ALI01 provides details: Time: 2013-11-02 21:59:50, Speed: 86.00 km/h (South), Position: Katar Bund Road, Lahore, Pakistan, Alarm: ACC ON, SD Card Exist, 3G Signal Normal, Video, Intercom, Monitor, Snapshot, More. On the right side, there are three video camera feeds showing the interior of the vehicle. At the bottom, there is a status bar with "Monitor: 1", "Online: 1", "Alarm: 0", "Offline: 0", "Idling: 0", and "Auto Sort" checkbox. A table below the status bar shows device information for ALI01.

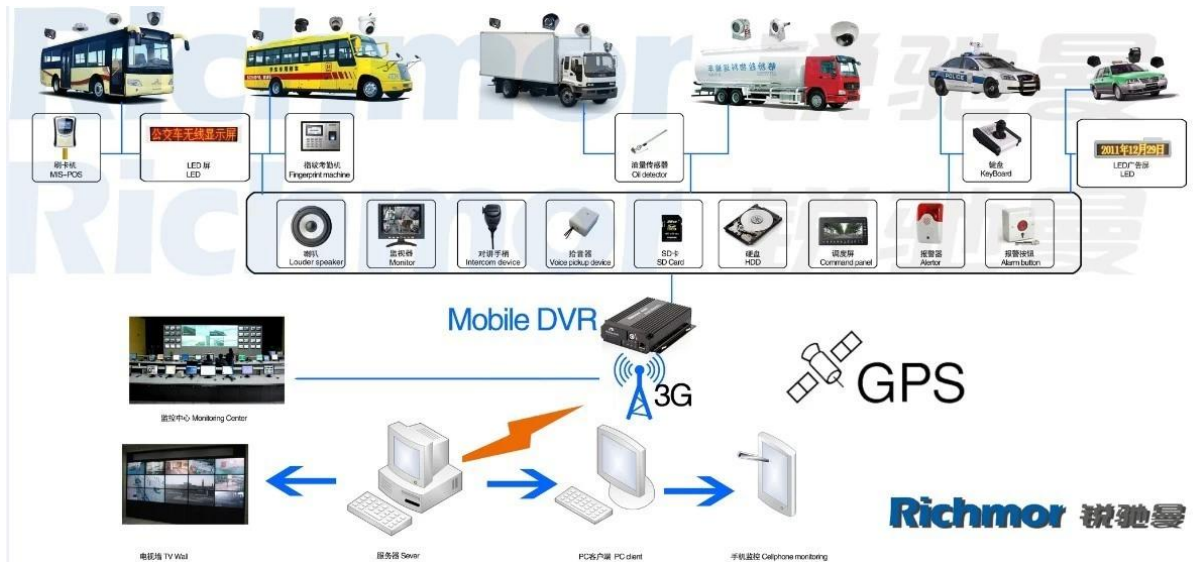
Device	Positioning Time	Position	Speed	Alarm
ALI01	2013-11-02 21:59:50	Katar Bund Road, Lahore, Pakistan	86.00 km/h (South)	Alarm

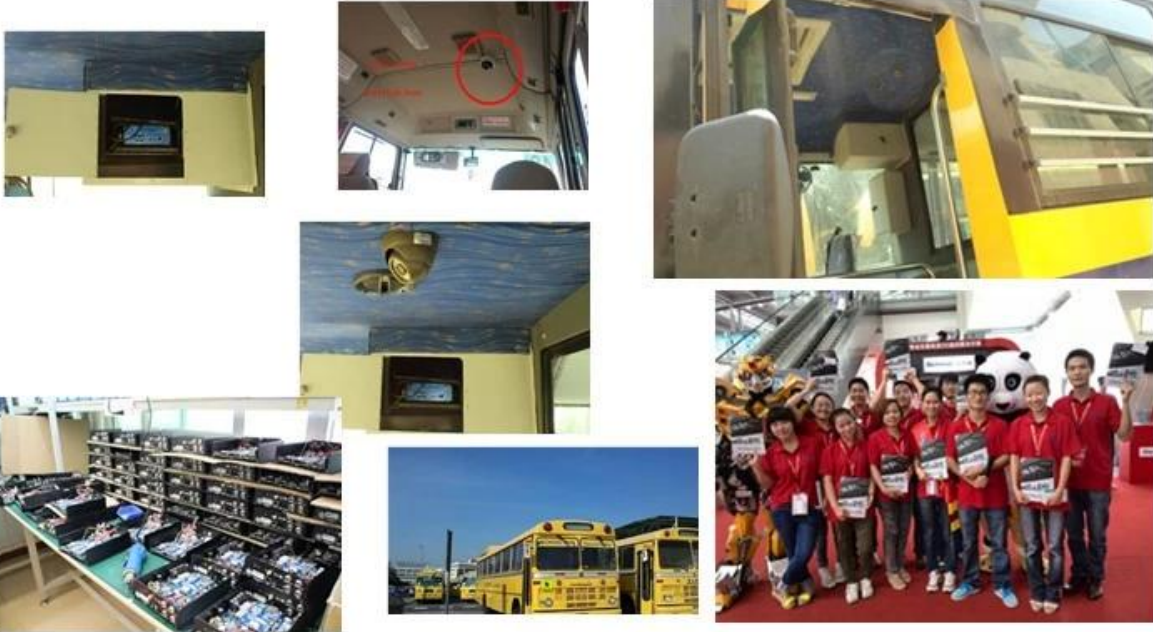
Windows PC

IOS & Android OS



DVR





VERIFICATION OF CONFORMITY

Verification of Conformity
Reference No.: LC1208080170

Responsible Party: Shenzhen Rishuo Technology Development Co., LTD.
Address: 2F No.24 West Longguan Road, Longhua New District, Shenzhen, China
Product: Tablet
Model No.: RSH-PC10H, RSH-PC10S, RSH-PC10V, RSH-PC10T, RSH-MPC10L, RSH-MPC10M, RSH-MPC10S, RSH-MPC10M, RSH-MPC10L, RSH-MPC10S, RSH-MPC10M, RSH-MPC10L, RSH-MPC10S, RSH-MPC10M, RSH-MPC10L
Trade Mark: Rishuo
Standard: FCC CFR 47 PART 15 Subpart B, 2011, ANSI C63.4-2008

Important note:
This device is in compliance with Part 15 of the FCC Rules and Regulations for radio frequency devices. Operation of this product is subject to the following two conditions:
(1) This device may not cause harmful interference, and (2) this device must accept any interference received, including interference that may cause undesired operation.
We warrant to conform to the applicable FCC Rules and Regulations. The method of testing was in accordance to the most accurate measurement standards possible, and that all necessary steps have been authorized to assure that all production units of the same equipment will continue to comply with the Federal Communications Commission's requirements.

Shenzhen LCC Compliance Testing Laboratory Ltd.
17, Jingnong Industrial Park, Tenghuo Road, Bao'an Dist., Shenzhen District, Shenzhen, Guangdong, China
Tel: 86(755) 82191132 Fax: 86(755) 82191122
Http://www.lcc-test.com Email: test@lcc-test.com

April 10, 2013

VERIFICATION OF CONFORMITY

Verification of Conformity
Reference No.: LC1208080171

Responsible Party: Shenzhen Rishuo Technology Development Co., LTD.
Address: 2F No.24 West Longguan Road, Longhua New District, Shenzhen, China
Product: Mobile DVR
Model No.: RSH-MDR10L, RSH-MDR10M, RSH-MDR10S, RSH-MDR10M, RSH-MDR10L, RSH-MDR10S, RSH-MDR10M, RSH-MDR10L, RSH-MDR10S
Trade Mark: Rishuo
Standard: FCC CFR 47 PART 15 Subpart B, 2011, ANSI C63.4-2008

Important note:
This device is in compliance with Part 15 of the FCC Rules and Regulations for radio frequency devices. Operation of this product is subject to the following two conditions:
(1) This device may not cause harmful interference, and (2) this device must accept any interference received, including interference that may cause undesired operation.
We warrant to conform to the applicable FCC Rules and Regulations. The method of testing was in accordance to the most accurate measurement standards possible, and that all necessary steps have been authorized to assure that all production units of the same equipment will continue to comply with the Federal Communications Commission's requirements.

Shenzhen LCC Compliance Testing Laboratory Ltd.
17, Jingnong Industrial Park, Tenghuo Road, Bao'an Dist., Shenzhen District, Shenzhen, Guangdong, China
Tel: 86(755) 82191132 Fax: 86(755) 82191122
Http://www.lcc-test.com Email: test@lcc-test.com

April 10, 2013

CERTIFICATE of Conformity
Reference No.: LC1208080170

Applicant: Shenzhen Rishuo Technology Development Co., LTD.
Address: 2F No.24 West Longguan Road, Longhua New District, Shenzhen, China
Product: Mobile DVR
Model No.: RSH-MDR10L, RSH-MDR10M, RSH-MDR10S, RSH-MDR10M, RSH-MDR10L, RSH-MDR10S
Trade Mark: Rishuo

The submitted products have been tested in all the listed standards and found in compliance with the following European Directives:
The EMC Directive 2004/108/EC
EN 61000-200, EN 61000-3-2

This test was performed in normal operation mode. This test results apply only to the particular sample tested and to the specific trade option set. This certificate applies specifically to the sample investigated in our test laboratory only only only.
The CE Markings as shown below can be affixed to the product after completion of necessary technical documentation.
(Other relevant Directives have to be observed)

CE

Shenzhen LCC Compliance Testing Laboratory Ltd.
17, Jingnong Industrial Park, Tenghuo Road, Bao'an Dist., Shenzhen District, Shenzhen, Guangdong, China
Tel: 86(755) 82191132 Fax: 86(755) 82191122
Http://www.lcc-test.com Email: test@lcc-test.com

April 10, 2013

CERTIFICATE OF CONFORMITY

CERTIFICATE of Conformity
Reference No.: LC1208080170

Applicant: Shenzhen Rishuo Technology Development Co., LTD.
Address: 2F No.24 West Longguan Road, Longhua New District, Shenzhen, China
Product: Tablet
Model No.: RSH-PC10H, RSH-PC10S, RSH-PC10V, RSH-PC10T, RSH-MPC10L, RSH-MPC10M, RSH-MPC10S, RSH-MPC10M, RSH-MPC10L, RSH-MPC10S, RSH-MPC10M, RSH-MPC10L
Trade Mark: Rishuo

The submitted products have been tested in all the listed standards and found in compliance with the following European Directives:
The EMC Directive 2004/108/EC
EN 61000-200, EN 61000-3-2

This test was performed in normal operation mode. This test results apply only to the particular sample tested and to the specific trade option set. This certificate applies specifically to the sample investigated in our test laboratory only only only.
The CE Markings as shown below can be affixed to the product after completion of necessary technical documentation.
(Other relevant Directives have to be observed)

CE

Shenzhen LCC Compliance Testing Laboratory Ltd.
17, Jingnong Industrial Park, Tenghuo Road, Bao'an Dist., Shenzhen District, Shenzhen, Guangdong, China
Tel: 86(755) 82191132 Fax: 86(755) 82191122
Http://www.lcc-test.com Email: test@lcc-test.com

April 10, 2013

CERTIFICATE OF CONFORMITY

CERTIFICATE of Conformity
Reference No.: LC1208080170

When tested as specified, the submitted sample complies with the requirements of Commission Decision of 21 July 2011 amending Directive 2002/95/EC.

Applicant: Shenzhen Rishuo Technology Development Co., LTD.
Address: 2F No.24 West Longguan Road, Longhua New District, Shenzhen, China
Trade Mark: Rishuo
Product: Tablet
Model No.: RSH-PC10H, RSH-PC10S, RSH-PC10V, RSH-PC10T, RSH-MPC10L, RSH-MPC10M, RSH-MPC10S, RSH-MPC10M, RSH-MPC10L, RSH-MPC10S, RSH-MPC10M, RSH-MPC10L
Standard: RoHS

This test report is issued by the Company subject to its General Conditions of Service printed on separate sheet in Chinese or English. It is the responsibility of the applicant to ensure that all necessary steps have been authorized to assure that all production units of the same equipment will continue to comply with the requirements of the relevant European Union Directives.
(Other relevant Directives have to be observed)

RoHS

Shenzhen LCC Compliance Testing Laboratory Ltd.
17, Jingnong Industrial Park, Tenghuo Road, Bao'an Dist., Shenzhen District, Shenzhen, Guangdong, China
Tel: 86(755) 82191132 Fax: 86(755) 82191122
Http://www.lcc-test.com Email: test@lcc-test.com

April 10, 2013

CERTIFICATE OF CONFORMITY

CERTIFICATE of Conformity
Reference No.: LC1208080170

When tested as specified, the submitted sample complies with the requirements of Commission Decision of 21 July 2011 amending Directive 2002/95/EC.

Applicant: Shenzhen Rishuo Technology Development Co., LTD.
Address: 2F No.24 West Longguan Road, Longhua New District, Shenzhen, China
Trade Mark: Rishuo
Product: Mobile DVR
Model No.: RSH-MDR10L, RSH-MDR10M, RSH-MDR10S, RSH-MDR10M, RSH-MDR10L, RSH-MDR10S
Standard: RoHS

This test report is issued by the Company subject to its General Conditions of Service printed on separate sheet in Chinese or English. It is the responsibility of the applicant to ensure that all necessary steps have been authorized to assure that all production units of the same equipment will continue to comply with the requirements of the relevant European Union Directives.
(Other relevant Directives have to be observed)

RoHS

Shenzhen LCC Compliance Testing Laboratory Ltd.
17, Jingnong Industrial Park, Tenghuo Road, Bao'an Dist., Shenzhen District, Shenzhen, Guangdong, China
Tel: 86(755) 82191132 Fax: 86(755) 82191122
Http://www.lcc-test.com Email: test@lcc-test.com

April 10, 2013

5



Richmor

OEM & ODM Service
Brazil World Cup Supplier



Inner Training after study from Alibaba in July



Technical Training For Fast Response to Customer Richmor 锐驰曼



lecturer for Execution